



WELCOME

The Blue Mountains
Waste Solution
Workshop No. 1
May 24 and 26, 2007



Workshop Outline

- Introduction of Study
- Your Current Waste Management System
- Group Discussions
- The Provincial Approvals Process
- Thank-you for attending



Lura



Existing Waste System

- How is waste currently managed in the Town?
 - Diversion Programs
 - Waste Disposal Site



What kinds of waste are managed?

- Residential
- Industrial, Commercial and Institutional (ICI)
- Construction and Demolition (C&D)



How Much Waste is Managed

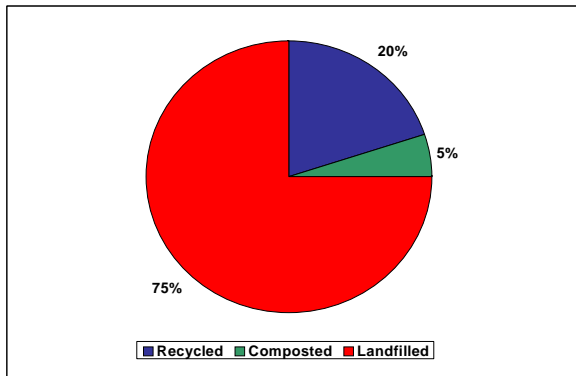
- 2004 – 7,562 tonnes
- 2005 – 7,385 tonnes
- 2006 – 6,780 tonnes
- Between 2,000 and 5,000 tonnes exported yearly



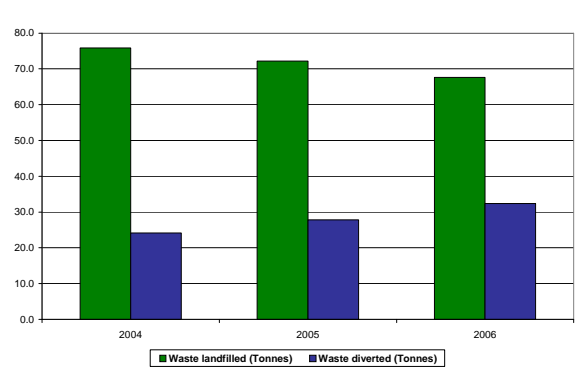
How is Waste Managed?

	2004	2005	2006
Total Waste Landfilled (tonnes)	5,736	5,333	4,583
Total Waste Diverted (tonnes)	1,826	2,051	2,197
Total Waste (tonnes)	7,562	7,385	6,780
Permanent Population	6,541	6,683	6,825
Kg/person/year	1,156	1,105	993
Overall Diversion Rate (%)	24	28	32

How is Waste Managed?



Disposal versus Diversion



Waste Disposal

- The Blue Mountains' Landfill

- 5 Years Licensed Capacity remaining in March 2006

- Total waste landfilled in 2006: 4,583 tonnes

- Per capita disposal rate in 2006: 590 kg/person/year



Waste Diversion Programs

- Blue and Grey Box
 - Paper, boxboard, cardboard glass, metals, plastics etc



- Landfill Depots
 - Tires,
 - Household Hazardous Waste
 - Other materials; bulky items, scrap metal and appliances



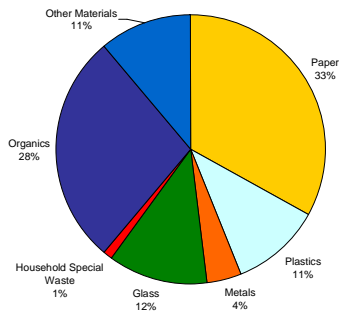
- Composting
 - Landfill Composting
 - Backyard Composting



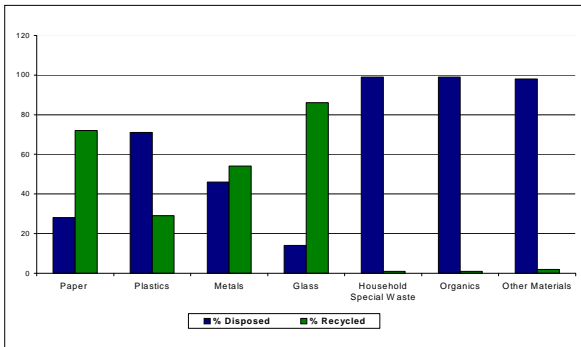
Residential Waste

	2004	2005	2006
Residential Waste Diverted			
Recyclables	999	1043	1036
Organics	241	333	586
HHW Treatment	4	4	N/A
Backyard Composting	40	46	50
Total Residential Waste Diverted (Tonnes)	1,284	1,426	1,672
Residential Waste Disposed			
Curbside Collection	1,865	1,885	1,887
Residential Drop-off	86	44	35
Residential Waste Disposed (Tonnes)	1,951	1,929	1,922
Total Residential Waste Generated	3,235	3,455	3,594
Residential Waste Generation kg/person/year	495	517	527

Residential Waste Composition



Residential Capture Rates



Residential Waste Diversion

- Overall residential capture rate per capita in 2006: 245 kg/person/year
- The majority diverted through the Blue and Grey Box
- A total of 470 households participated in Backyard composting

What Does it Cost?



2004 – 2006 Cost Per Tonne

	Gross	Revenue	Net
2004	\$121	\$73	\$48
2005	\$115	\$85	\$30
2006	\$150	\$70	\$80
Average	\$128	\$76	\$52

Future Waste Generation

- Population Projections

Population	2010	2011	2016	2021	2040
Permanent	7,051	7,108	7,403	7,711	9,000
Seasonal	13,088	13,772	17,768	22,923	60,352



- Average generation factor of 1,150 kg/person/year
- Diversion rate of 60% by ????
- The Town will require disposal capacity of approx. 130,000 tonnes or 230,000 tonnes to 2040

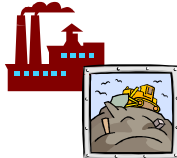
Potential Options – 3Rs

- Waste Reduction – Extended Producer Responsibility
- Waste Reuse
- Public Education and Awareness
- Optimize Blue and Grey Box
- Household Hazardous Waste Depot
- Leaf and Yard Waste Collection
- Source Separation Organics Collection
- Landfill Bans
- User Pay



Potential Disposal Options

- Expanded existing landfill
- Mine existing landfill
- Energy from Waste
- Siting study for new landfill
- Export of waste outside the municipality
- Collaborate with other local municipalities to locate a disposal facility



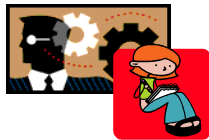
Lets Discuss the Future

- We need your input!
- How should we manage the waste generated in our Town?



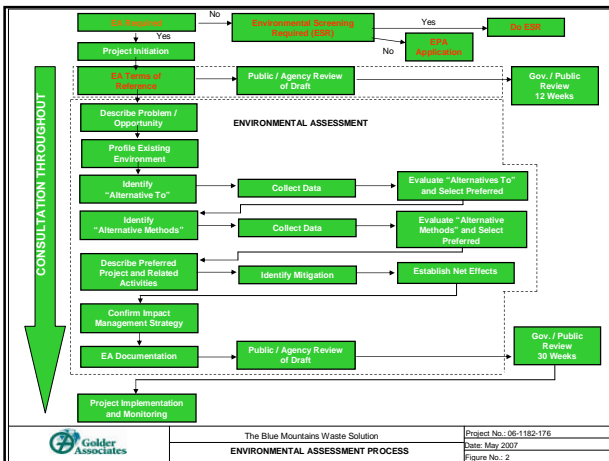
Provincial Approvals Process

- Environmental Assessment Act (EAA)
- Environmental Protection Act (EPA)



Individual EA

- New landfills over 100,000 m³
- Landfill expansions over 100,000 m³
- Thermal facilities with no energy recovery



Environmental Assessment Act

- Individual EA
- Environmental Screening
- No EA

Environmental Screening Process

- Landfill expansion less than 100,000 m³
- Landfill mining 100,000 cubic metres or less
- Thermal Treatment Site with energy recovery
- Waste processing or transfer stations that ship over 1000 tonnes of waste for disposal

No EAA Requirements

- Organic facilities under 1000 tonnes of residual
- Recycling facilities
- Transfer Stations under 1000 tonnes/day

Next Steps

- Develop Waste Diversion Plan August 07
- EA/Environmental Screening Process August 07
- Prepare Draft Terms of Reference August 07
- Workshop #2 Sept/Oct 07

Thank-you for Your Input
