

STAFF REPORT: ENGINEERING AND PUBLIC WORKS DEPARTMENT



REPORT TO: Infrastructure & Recreation Committee
MEETING DATE: June 9, 2009
REPORT NO.: EPW.09.053
SUBJECT: Assumption Bylaw for RP's 1115 and 1120 (Historic Snowbridge Subdivision Ph 1 & 2A)
PREPARED BY: Reg Russwurm – Director of Engineering and Public Works

A. Recommendation

THAT Council enact a By-law to approve full acceptance and assumption of the public works constructed and installed within Registered Plans 1115 and 1120 otherwise known as Historic Snowbridge Subdivision Phases 1 and 2A as outlined in Report EPW.09.053 "Assumption Bylaw for RP's 1115 and 1120 (Historic Snowbridge Subdivision Ph 1 & 2A"

B. Background

Staff have determined that the Intrawest Corporation has fulfilled its obligations under the Subdivision Agreements for Registered Plans 1115 and 1120, otherwise known as Historic Snowbridge Phases 1 and 2A (Attachment 1 and 2). All department heads have acknowledged clearance of the acceptance and assumption of the works.

All securities for these projects have been returned, there are no outstanding costs and it is appropriate that the Town assume the works as municipal works.

A draft by-law has been prepared to initiate the following and is provided as Attachment 3.

1. All of the public works constructed and installed in accordance with the subdivision agreements for Registered Plans 1115 and 1120 one hereby accepted and assumed.
2. Blocks 36, 39 and 40 Registered Plan 1115 and Block 6 Registered Plan 1120 are hereby established as parts of public highway known as Snowbridge Way.
3. Snowbridge Way shown on Registered Plans 1115 and 1120 is hereby assumed for public use.

C. The Blue Mountains' Strategic Plan

Town's Strategic Plan Goal # 2 "Addressing the Town's Municipal Infrastructure needs" is in part satisfied by the recommended action.

D. Budget Impact

The Town will now become responsible for all operation, maintenance and ultimate replacement costs associated with public works within RP's 1115 and 1120. Future Town budgets will make allowance for these costs.

E. Attached

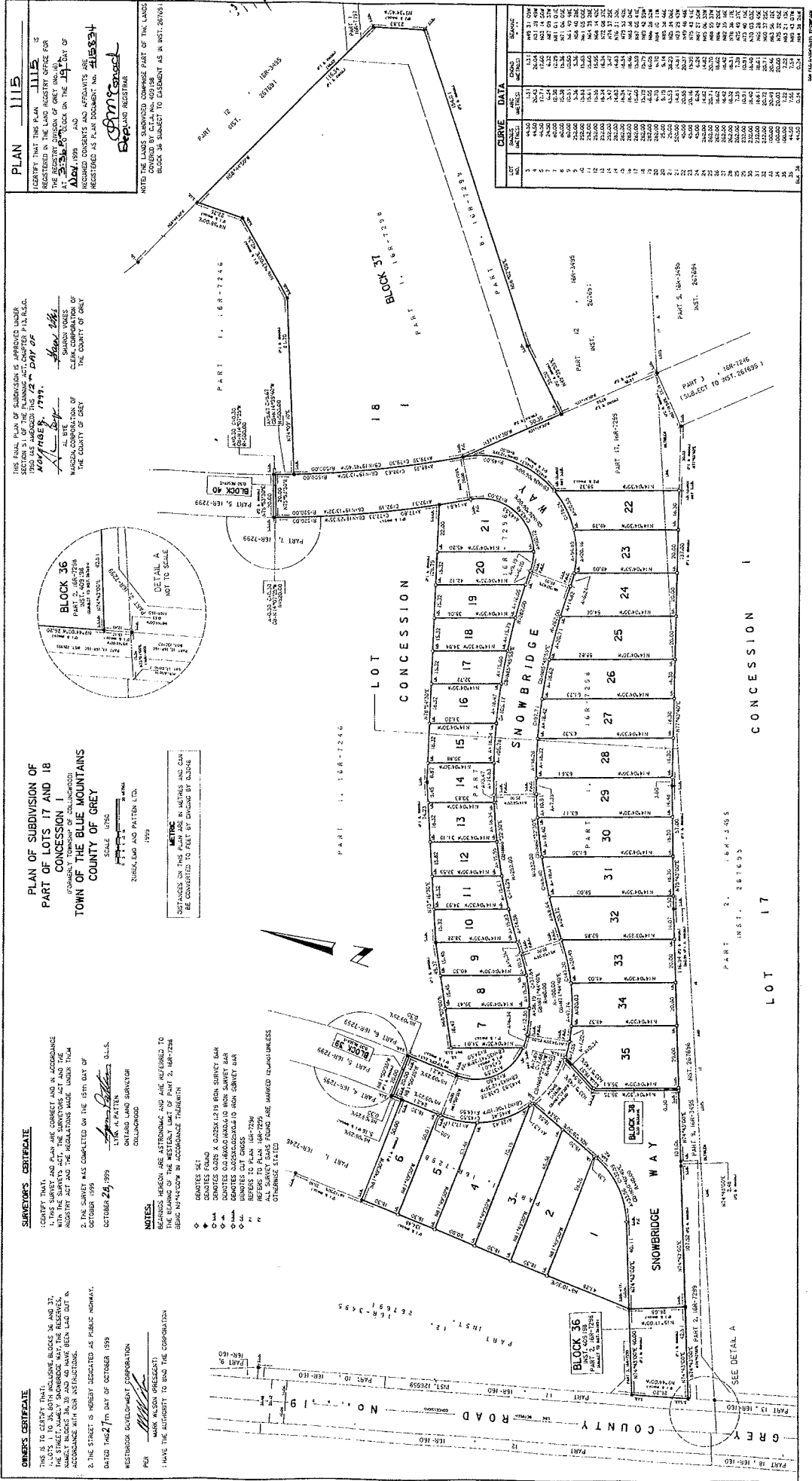
1. RP 1115: Historic Snowbridge Phases 1
2. RP 1120: Historic Snowbridge Phases 2A
3. Draft Assumption By-Law for RP's 1115 and 1120

Respectfully submitted,

Reg Russwurm
Director, Engineering and Public Works

For more information, please contact:

Reg Russwurm
russwurm@thebluemountains.ca
(519) 599-3131 x260



PLAN 1115

IDENTIFY THAT THIS PLAN IS THE FINAL PLAN OF SUBDIVISION OF THE PLANNED SECTION 31 OF THE TOWN OF GREY, COUNTY OF GREY, NOVEMBER 17, 1999.

THE REGISTRY OF DEEDS HAS RECORDED THIS PLAN AT 3:30 P.M. ON THE 19TH DAY OF NOVEMBER 1999.

REGISTERED AS PLAN DOCUMENT NO. 111534

Beard & Associates
LAWYERS

THIS FINAL PLAN OF SUBDIVISION IS APPROVED UNDER SECTION 31 OF THE PLANNING AND DEVELOPMENT ACT, CHAPTER P13, R.S.O. 1990, AS AMENDED, ON NOVEMBER 17, 1999.

ALBERT SHAW, CLERK, CORPORATION OF GREY, COUNTY OF GREY

PLAN OF SUBDIVISION OF PART OF LOTS 17 AND 18 CONCESSION 1 TOWN OF THE BLUE MOUNTAINS COUNTY OF GREY

SCALE: 1:500

ZURK, LAW AND PATEN LTD. 1999

METRIC

MEASUREMENTS ON THIS PLAN ARE IN METRES AND CAN BE CONVERTED TO FEET BY DIVIDING BY 0.3048

OWNER'S CERTIFICATE

THIS IS TO CERTIFY THAT:

1. THIS SURVEY AND PLAN ARE CORRECT AND IN ACCORDANCE WITH THE SURVEY ACT, THE SURVEYORS ACT AND THE REGISTRY ACT, AND THE REGULATIONS MADE UNDER THEM.
2. THE SURVEY WAS COMPLETED ON THE 15TH DAY OF OCTOBER 1999.

DATED THIS 27TH DAY OF OCTOBER 1999

WESTBROOK DEVELOPMENT CORPORATION

MARK NELSON (PRESIDENT)

I HAVE THE AUTHORITY TO SIGN THE CORPORATION

SURVEYOR'S CERTIFICATE

(CONCEPT THAT)

1. THIS SURVEY AND PLAN ARE CORRECT AND IN ACCORDANCE WITH THE SURVEY ACT, THE SURVEYORS ACT AND THE REGISTRY ACT, AND THE REGULATIONS MADE UNDER THEM.
2. THE SURVEY WAS COMPLETED ON THE 15TH DAY OF OCTOBER 1999.

DATED THIS 27TH DAY OF OCTOBER 1999

ONTARIO LAND SURVEYOR COLLEGIUM

NOTES:

- 1. BEARING MEASUREMENTS ARE ASTROMETRIC AND ARE REFERRED TO THE TRIANGULAR POINT OF THE WESTERN LIMIT OF PART 2, 18TH 2ND CONCESSION 1, TOWN OF THE BLUE MOUNTAINS, COUNTY OF GREY, ON THE 15TH DAY OF OCTOBER 1999.
- 2. THE SURVEY WAS COMPLETED ON THE 15TH DAY OF OCTOBER 1999.
- 3. THE SURVEY WAS COMPLETED ON THE 15TH DAY OF OCTOBER 1999.
- 4. THE SURVEY WAS COMPLETED ON THE 15TH DAY OF OCTOBER 1999.
- 5. THE SURVEY WAS COMPLETED ON THE 15TH DAY OF OCTOBER 1999.
- 6. THE SURVEY WAS COMPLETED ON THE 15TH DAY OF OCTOBER 1999.
- 7. THE SURVEY WAS COMPLETED ON THE 15TH DAY OF OCTOBER 1999.
- 8. THE SURVEY WAS COMPLETED ON THE 15TH DAY OF OCTOBER 1999.
- 9. THE SURVEY WAS COMPLETED ON THE 15TH DAY OF OCTOBER 1999.
- 10. THE SURVEY WAS COMPLETED ON THE 15TH DAY OF OCTOBER 1999.
- 11. THE SURVEY WAS COMPLETED ON THE 15TH DAY OF OCTOBER 1999.
- 12. THE SURVEY WAS COMPLETED ON THE 15TH DAY OF OCTOBER 1999.
- 13. THE SURVEY WAS COMPLETED ON THE 15TH DAY OF OCTOBER 1999.
- 14. THE SURVEY WAS COMPLETED ON THE 15TH DAY OF OCTOBER 1999.
- 15. THE SURVEY WAS COMPLETED ON THE 15TH DAY OF OCTOBER 1999.
- 16. THE SURVEY WAS COMPLETED ON THE 15TH DAY OF OCTOBER 1999.
- 17. THE SURVEY WAS COMPLETED ON THE 15TH DAY OF OCTOBER 1999.
- 18. THE SURVEY WAS COMPLETED ON THE 15TH DAY OF OCTOBER 1999.
- 19. THE SURVEY WAS COMPLETED ON THE 15TH DAY OF OCTOBER 1999.
- 20. THE SURVEY WAS COMPLETED ON THE 15TH DAY OF OCTOBER 1999.
- 21. THE SURVEY WAS COMPLETED ON THE 15TH DAY OF OCTOBER 1999.
- 22. THE SURVEY WAS COMPLETED ON THE 15TH DAY OF OCTOBER 1999.
- 23. THE SURVEY WAS COMPLETED ON THE 15TH DAY OF OCTOBER 1999.
- 24. THE SURVEY WAS COMPLETED ON THE 15TH DAY OF OCTOBER 1999.
- 25. THE SURVEY WAS COMPLETED ON THE 15TH DAY OF OCTOBER 1999.
- 26. THE SURVEY WAS COMPLETED ON THE 15TH DAY OF OCTOBER 1999.
- 27. THE SURVEY WAS COMPLETED ON THE 15TH DAY OF OCTOBER 1999.
- 28. THE SURVEY WAS COMPLETED ON THE 15TH DAY OF OCTOBER 1999.
- 29. THE SURVEY WAS COMPLETED ON THE 15TH DAY OF OCTOBER 1999.
- 30. THE SURVEY WAS COMPLETED ON THE 15TH DAY OF OCTOBER 1999.
- 31. THE SURVEY WAS COMPLETED ON THE 15TH DAY OF OCTOBER 1999.
- 32. THE SURVEY WAS COMPLETED ON THE 15TH DAY OF OCTOBER 1999.
- 33. THE SURVEY WAS COMPLETED ON THE 15TH DAY OF OCTOBER 1999.
- 34. THE SURVEY WAS COMPLETED ON THE 15TH DAY OF OCTOBER 1999.
- 35. THE SURVEY WAS COMPLETED ON THE 15TH DAY OF OCTOBER 1999.

CURVE DATA

LOT NO.	CHORD BEARING	CHORD DISTANCE	ARC DISTANCE	ANGLE	PIECE POINT
1	N 89° 58' 30" W	10.000	10.000	90°	10.000
2	S 89° 58' 30" E	10.000	10.000	90°	10.000
3	N 0° 0' 0" E	10.000	10.000	90°	10.000
4	S 0° 0' 0" W	10.000	10.000	90°	10.000
5	N 89° 58' 30" W	10.000	10.000	90°	10.000
6	S 89° 58' 30" E	10.000	10.000	90°	10.000
7	N 0° 0' 0" E	10.000	10.000	90°	10.000
8	S 0° 0' 0" W	10.000	10.000	90°	10.000
9	N 89° 58' 30" W	10.000	10.000	90°	10.000
10	S 89° 58' 30" E	10.000	10.000	90°	10.000
11	N 0° 0' 0" E	10.000	10.000	90°	10.000
12	S 0° 0' 0" W	10.000	10.000	90°	10.000
13	N 89° 58' 30" W	10.000	10.000	90°	10.000
14	S 89° 58' 30" E	10.000	10.000	90°	10.000
15	N 0° 0' 0" E	10.000	10.000	90°	10.000
16	S 0° 0' 0" W	10.000	10.000	90°	10.000
17	N 89° 58' 30" W	10.000	10.000	90°	10.000
18	S 89° 58' 30" E	10.000	10.000	90°	10.000
19	N 0° 0' 0" E	10.000	10.000	90°	10.000
20	S 0° 0' 0" W	10.000	10.000	90°	10.000
21	N 89° 58' 30" W	10.000	10.000	90°	10.000
22	S 89° 58' 30" E	10.000	10.000	90°	10.000
23	N 0° 0' 0" E	10.000	10.000	90°	10.000
24	S 0° 0' 0" W	10.000	10.000	90°	10.000
25	N 89° 58' 30" W	10.000	10.000	90°	10.000
26	S 89° 58' 30" E	10.000	10.000	90°	10.000
27	N 0° 0' 0" E	10.000	10.000	90°	10.000
28	S 0° 0' 0" W	10.000	10.000	90°	10.000
29	N 89° 58' 30" W	10.000	10.000	90°	10.000
30	S 89° 58' 30" E	10.000	10.000	90°	10.000
31	N 0° 0' 0" E	10.000	10.000	90°	10.000
32	S 0° 0' 0" W	10.000	10.000	90°	10.000
33	N 89° 58' 30" W	10.000	10.000	90°	10.000
34	S 89° 58' 30" E	10.000	10.000	90°	10.000
35	N 0° 0' 0" E	10.000	10.000	90°	10.000

SEE DETAIL A

**THE CORPORATION OF THE TOWN OF
THE BLUE MOUNTAINS**

By-law No. 2009 –

Being a By-law to accept and assume works in Registered Plans 1115 and 1120

WHEREAS sections 9, 11 and 31 of the Municipal Act, 2001, S.O. 2001, c. 25, as amended, enable the council of a municipality to pass by-laws to establish and assume highways for public use;

AND WHEREAS all of the public works in Registered Plans 1115 and 1120 have been constructed and installed in accordance with the subdivision agreements for these plans.

NOW THEREFORE the Council of the Corporation of the Town of The Blue Mountains hereby enacts as follows:

1. All of the public works constructed and installed in accordance with the subdivision agreements for Registered Plans 1115 and 1120 are hereby accepted and assumed.
2. Blocks 36, 39 and 40 Registered Plan 1115 and Block 6 Registered Plan 1120 are hereby established as parts of the public highway known as Snowbridge Way.
3. Snowbridge Way shown on Registered Plans 1115 and 1120 is hereby assumed for public use.

Enacted and passed this 22nd day of June, 2009

.....
Ellen Anderson, Mayor

.....
Stephen Keast, Clerk