

**STAFF REPORT:**

**REPORT TO:** Council  
**MEETING DATE:** September 28, 2009  
**REPORT NO.:** SPS.09.06  
**SUBJECT:** Cultural Heritage Landscape Assessment Report  
**PREPARED BY:** Peter Tollefsen, Director of Special Projects (Sustainability)

**A. Recommendations**

THAT Council receive the Staff Report SPS.09.06 "Cultural Heritage Landscape Assessment Report" and;

THAT Council receive the Cultural Heritage Landscape Assessment Report by Envision.

**B. Background**

A staff report regarding Renewable Energy Update was forwarded to Council in July 2007 stating that the Town may have Significant Cultural Heritage Landscapes (SCHL's) which the Provincial Policy Statement says should be conserved and that policies for renewable energy could protect SCHL's. The report suggested that a Study should be done to assess and identify SCHL's within the unconstrained portions of the Municipality.

A draft Request for Proposal (RFP) and Terms of Reference was forwarded to Council in September 2007. A Request for Quotations for a Cultural Heritage Landscape Assessment was advertised in October 2007. On April 7, 2008 Council retained the firm Envision, the Hough Group, to prepare a Report.

The assessment of cultural heritage landscapes requires understanding and expertise in built heritage, historic settlement patterns and land uses, cultural and social influences and natural heritage. Of specific concern to the Town is the scenic value of the Beaver Valley. Envision also had done work for the Town regarding the Delphi Point Park and the Craighleith Heritage Master Plan.

The Study commenced in May 2008. Three stages of the Study have taken place:

- 1) Historical Research and Site Survey
- 2) Analysis and Identification and
- 3) Assessment Criteria.

A Workshop was held with Town staff, special interest groups and public agencies **June 4, 2008**. A Public Open House was held **July 24, 2008**.

The Report was finished in July 2009 and has been posted on the Town's Website for viewing. A link has been forwarded to the participants in the June 4 and July 24 meetings. The link has also been forwarded to Town Council and staff members. Hard copies of the Cultural Heritage Landscape Assessment Report were distributed to Council.

Report highlights include the following:

Page 10 of the Report identifies the *Ontario Heritage Act* as the principal piece of legislation governing the protection and preservation of cultural heritage resources in the Province. The Act enables municipalities to identify, list and protect properties of cultural heritage value or interest. The Ministry has released the Ontario Heritage Toolkit, in 2006. This comprehensive series of documents provides guidance on the conservation of all types of heritage resources including built heritage features, archaeological sites and cultural heritage landscapes.

Figure 10 (page 52) identifies 10 proposed Cultural Heritage Landscape (CHLs) areas within the unconstrained areas, as per the environmental screening through the renewable Energy Review (Attached to this report), of the Town.

Section 11 on page 65 talks about CHLs and Wind Energy Facilities with the requirements of the Renewable Energy Approval Regulations under the Environmental Protection Act. The Regulations proposes that proponents of new renewable energy generation facilities will be required to submit a Renewable Energy Approval application to the Ministry of the Environment, together with supporting documentation. The proponent's documentation is proposed to include demonstration that any cultural heritage resource considerations are assessed and recommendations provided for mitigation. This Report will act as that reference for resource inventory identification for review by a proponent.

Bill 150, the *Green Energy Act* which received Royal Assent May 14, 2009, made a number of amendments to fourteen Acts including the *Planning Act*, which removes local land use planning controls for renewable energy facilities. The exception to the exclusions for a heritage assessment under the Renewable Energy Approval Regulations is those heritage properties that have been designated under the Ontario Heritage Act. For those sites, approval of the local council is required.

Section 12, page 70 of the report, contains Recommendations. Similar to the Comprehensive Parking Study Council may take these recommendations under advisement. A number of the recommendations are worthwhile pursuing and staff will be reporting back to Council in the future with particular action. Staff is looking forward to Council discussion and feedback.

As it stands this Report has documented, articulated, identified and mapped a number of Cultural Heritage Landscape units within a portion of the Town. This in itself will act as an excellent resource document for the Municipality. The cultural /historical mapping will act as a tool for any future evaluation considerations including any development applications.

The conservation of cultural heritage is vital to a community's overall cultural and economic development plan. Staff is recommending to Council to receive the report in this regard. Planning for the future of a strong, vibrant community requires knowledge of the past and an understanding of what is valued in the present. Existing buildings, structures and landscapes often define a community's unique identity and give it character along with a sense of place.

### **C. The Blue Mountains' Strategic Plan**

This Study will assist the Town in working towards the following Goal:

- 1. Managing the growth to ensure the ongoing health and prosperity of the community.*

### **D. Environmental Impacts**

Assist in recognizing and preserving cultural heritage landscapes.

### **E. Budget Impact**

A Capital Budget request for Renewable Energy was approved by Council through the 2008 Budget Process that allocated funds for an estimated cost of this project of \$50,000.

Council retained the firm of Envision, the Hough Group, to prepare a Cultural Heritage Landscape Assessment Report at a cost of \$39,580.40 including GST. The project is on budget.

### **F. Attached**

The Cultural Heritage Landscape Assessment Report may be viewed on the Town's web site: [www.thebluemountains.ca](http://www.thebluemountains.ca) Select **Municipal Government**. Then select **Documents**. Then go to **Cultural Heritage Landscape Assessment Project**.

Attachment: Constraints Analysis, Renewable Energy Review dated April 2007.

Respectfully submitted,

---

Peter Tollefsen, Director of Special Projects (Sustainability)

For more information, please contact:

Peter Tollefsen

[ptollefsen@thebluemountains.ca](mailto:ptollefsen@thebluemountains.ca)

519 599 3131 ext.247

C.6

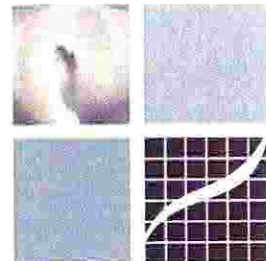
# constraints analysis

Town of the Blue Mountains

Renewable Energy Review

April 2007

BLU - 05063

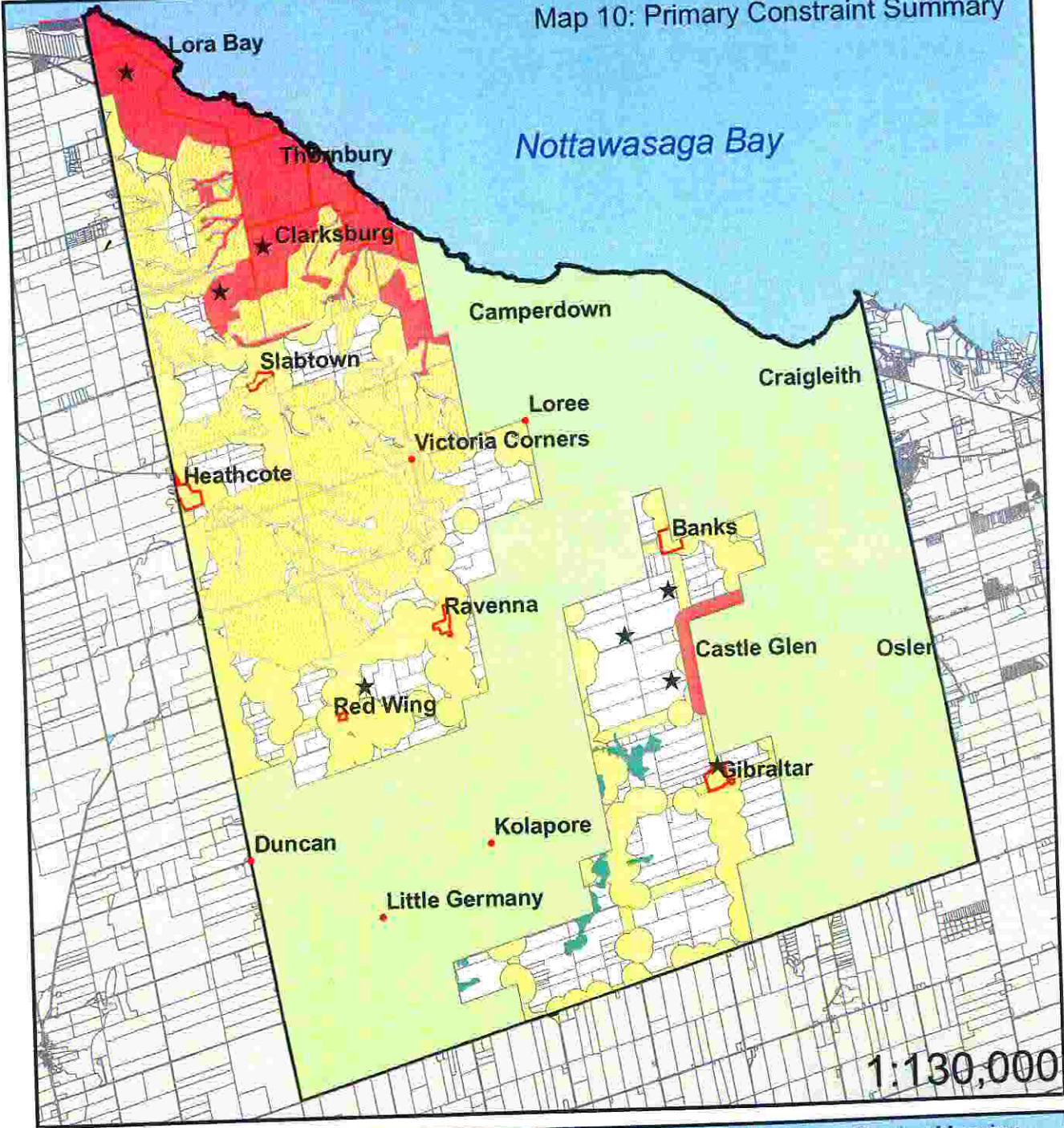


WWW.JONESCONSULTING.COM

**JONES**  
CONSULTING GROUP LTD.  
PLANNERS, ENGINEERS, SURVEYORS

# Town of The Blue Mountains Renewable Energy Constraint Mapping

Map 10: Primary Constraint Summary



| Legend  |  |
|---|--|
| <span style="color: red;">●</span> Historical Settlements   | <span style="border: 1px solid red; padding: 2px;"> </span> Service District Boundary 300m Buffer            |
| <span style="border: 1px solid black; padding: 2px;"> </span> Municipal Boundary  | <span style="border: 1px dashed red; padding: 2px;"> </span> Settlement Boundaries                           |
| <span style="background-color: yellow; border: 1px solid black; padding: 2px;"> </span> Niagara Escarpment Plan             | <span style="background-color: lightgreen; padding: 2px;"> </span> Provincially Significant Wetlands         |
| <span style="color: black;">★</span> Rare Species   | <span style="background-color: yellow; border: 1px solid black; padding: 2px;"> </span> 300m Building Buffer |
| <span style="background-color: yellow; border: 1px solid black; padding: 2px;"> </span> Special Agriculture (Official Plan) | <span style="background-color: yellow; border: 1px solid black; padding: 2px;"> </span> 140m Road Buffer     |
| <span style="border: 1px solid red; padding: 2px;"> </span> Service District Boundary (Official Plan)                       | <span style="border-bottom: 1px solid black; width: 20px; display: inline-block;"></span> Roads              |
| <span style="border: 1px solid red; padding: 2px;"> </span> 1000m Service District Buffer                                   | <span style="border: 1px solid black; width: 20px; height: 10px; display: inline-block;"></span> Parcels     |

Town of The Blue Mountains Overlay Mapping  
 October 2006.

This document is for reference purposes only. No part of the supplied data may be reproduced or transmitted to others in any way without the written permission of The Corporation of The Town of The Blue Mountains.

