

STAFF REPORT: Recreation



REPORT TO: Recreation Committee
MEETING DATE: Aug 28, 2008
REPORT NO.: DOR 08 42
SUBJECT: Bike Park Proposal
PREPARED BY: Shawn Everitt, Director of Recreation

A. Recommendations

THAT Council receive Staff Report DOR 08 42 "Bike Park Proposal" and authorize staff to develop a plan to determine the feasibility as well as determining the most appropriate location for the construction of a bike park.

B. Background

Staff has been approached by individuals in the community that have shown interest in the development of a bike park. It is expected that 40,000 sq.ft. or 0.9 acre of land would be required for a bike park facility with appropriate dimensions being 200 feet X 200 feet. A local contractor has expressed interest in donating machine time to construct the bike park.

Staff has contacted other town's and municipalities that have or are planning Bike Parks and a subsequent report will highlight possible liabilities or other potential issues that may be of concern.

Meaford Bike Park is located on a 200ft x 200ft property and has 8 to 10 hills. Town Staff cuts grass and occasionally grooms travelled portions of hills/jumps. The park is fenced however Staff has suggested that the fencing is more of a maintenance issue and cost then it is benefit.

Owen Sound Bike Park has received a large amount of publicity over the past two months. Originally constructed by a group on interested individuals and proposed to be maintained by the user groups the park fell into disrepair and a request by Council to close the park was made. Since then Council has agreed to spend \$12,000.00 to \$15,000.00 to improve the conditions of the Bike Park and it has since reopened.

Potential locations to be discussed

- Moreau Park greenspace
- Tomahawk property
- Bayview park “old campground”
- Grey Street Waste Water Plant
- Property just off Georgian trail by former Skippen building

C. The Blue Mountains’ Strategic Plan

Supporting the development of social and recreational programs to meet the broad range of needs in the community.

D. Budget Impact

2009 Capital Budget would reflect proposed construction costs in the amount of \$20,000.00.

2009 and ongoing maintenance expected to be approximately \$2500.00 per year

E. Environmental Impacts

To ensure sustainable use of Town Parkland

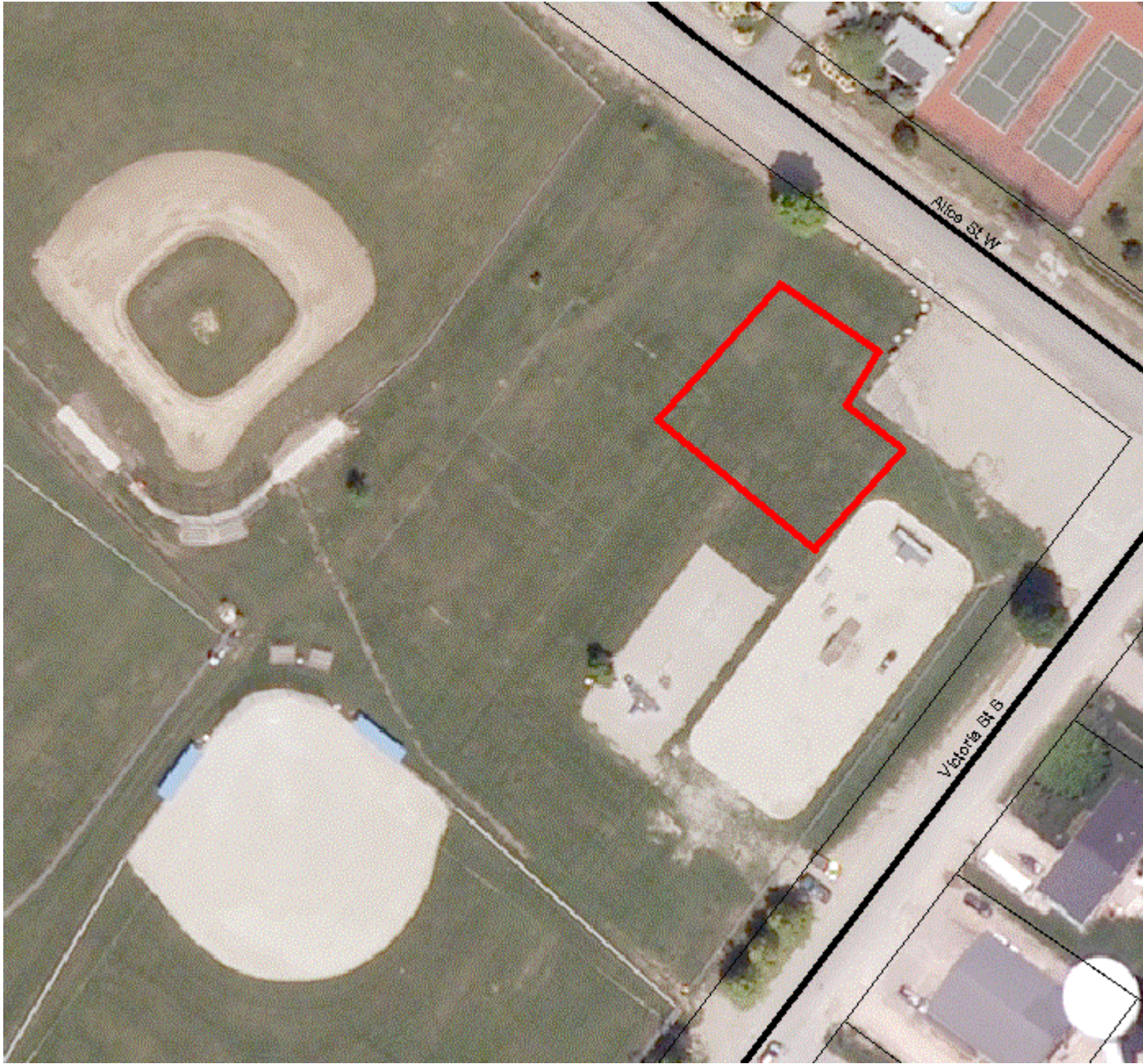
F. Attached

1. Moreau Park greenspace
2. Tomahawk property
3. Bayview park “old campground”
4. Property just off Georgian trail
5. Thornbury Waste Water Plant
6. Example of Bike Park Layout

Respectfully submitted,

Shawn Everitt, Director of Recreation

Moreau Park greenspace



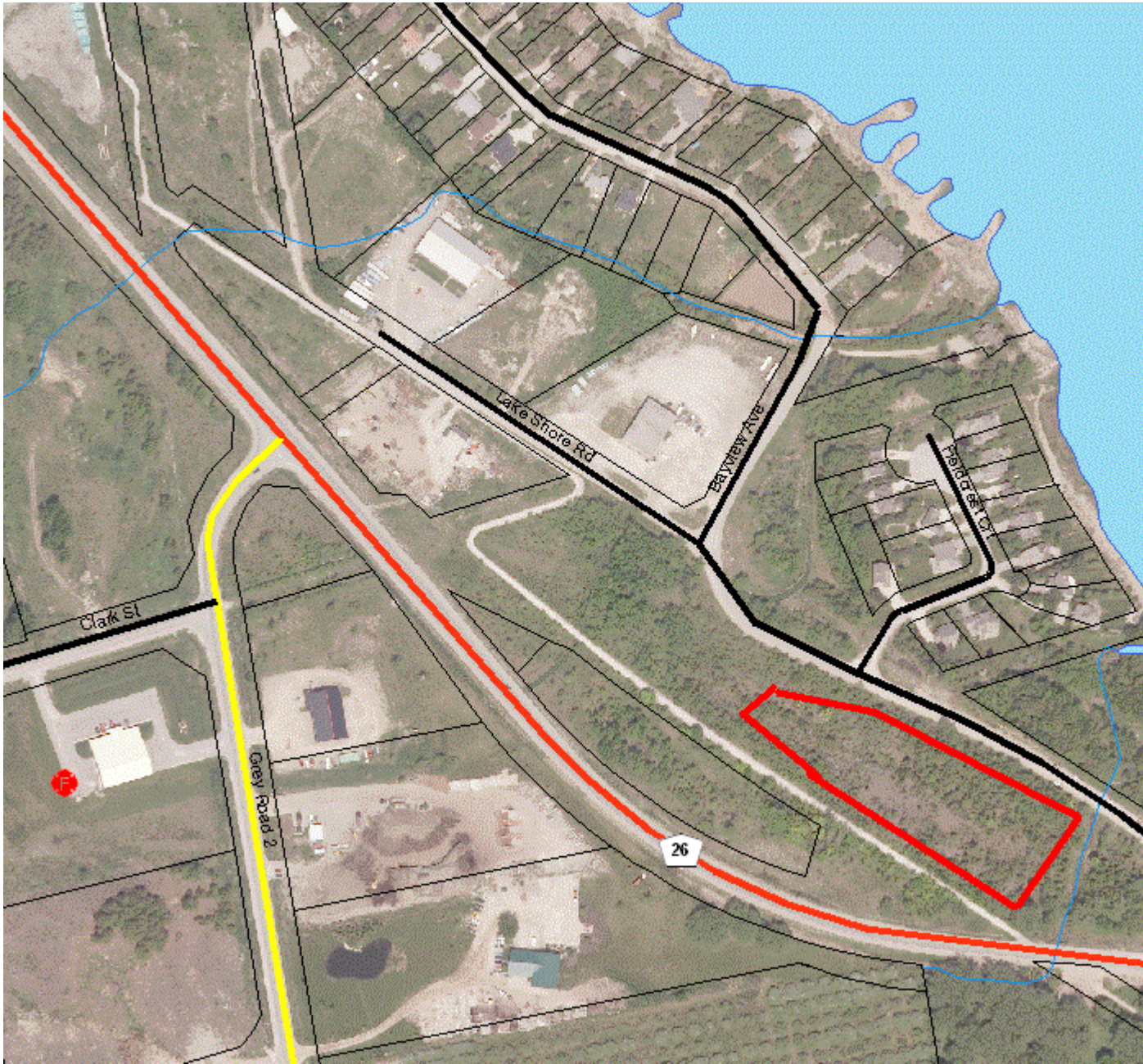
Tomahawk property



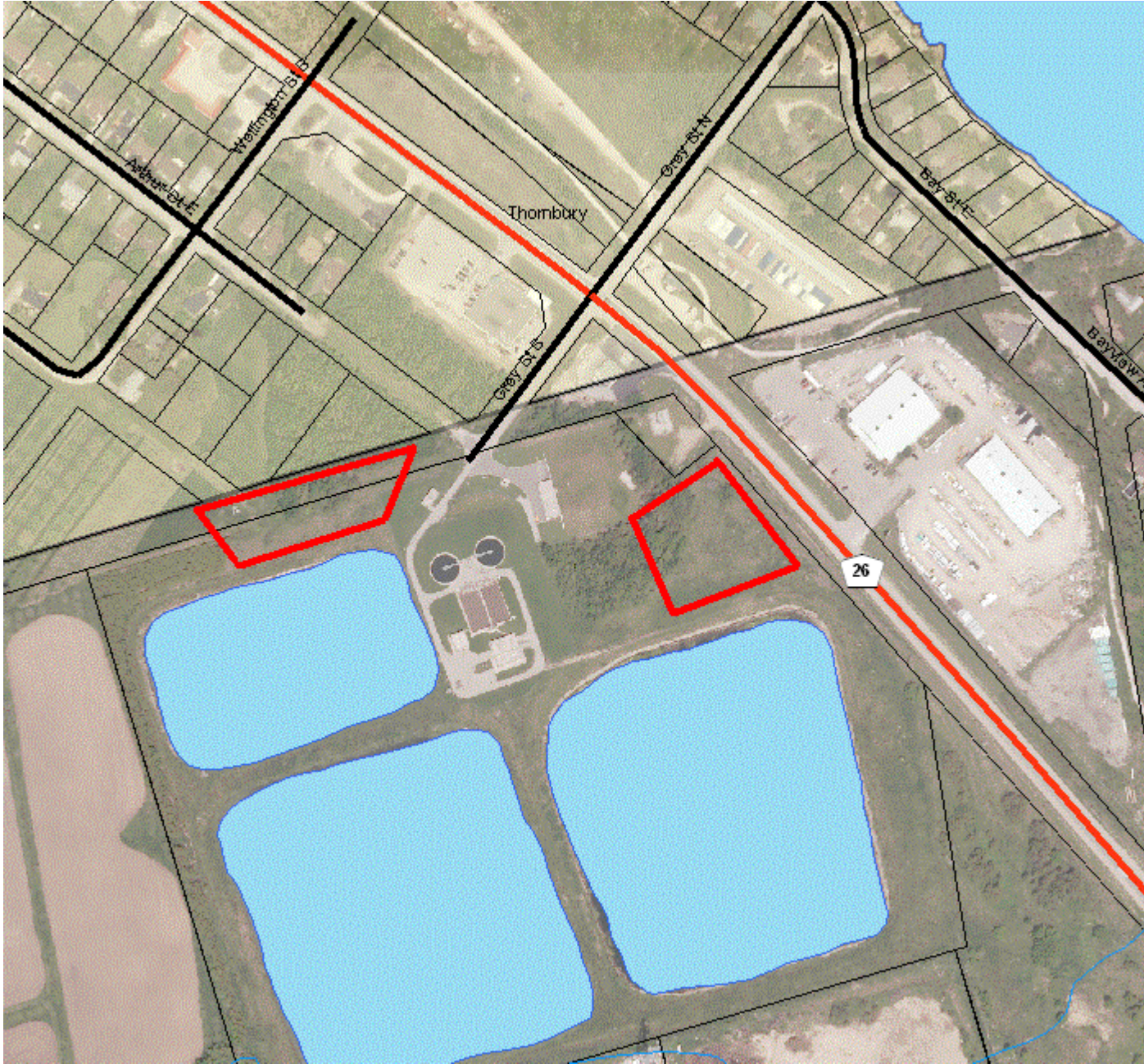
Bayview park "old campground"

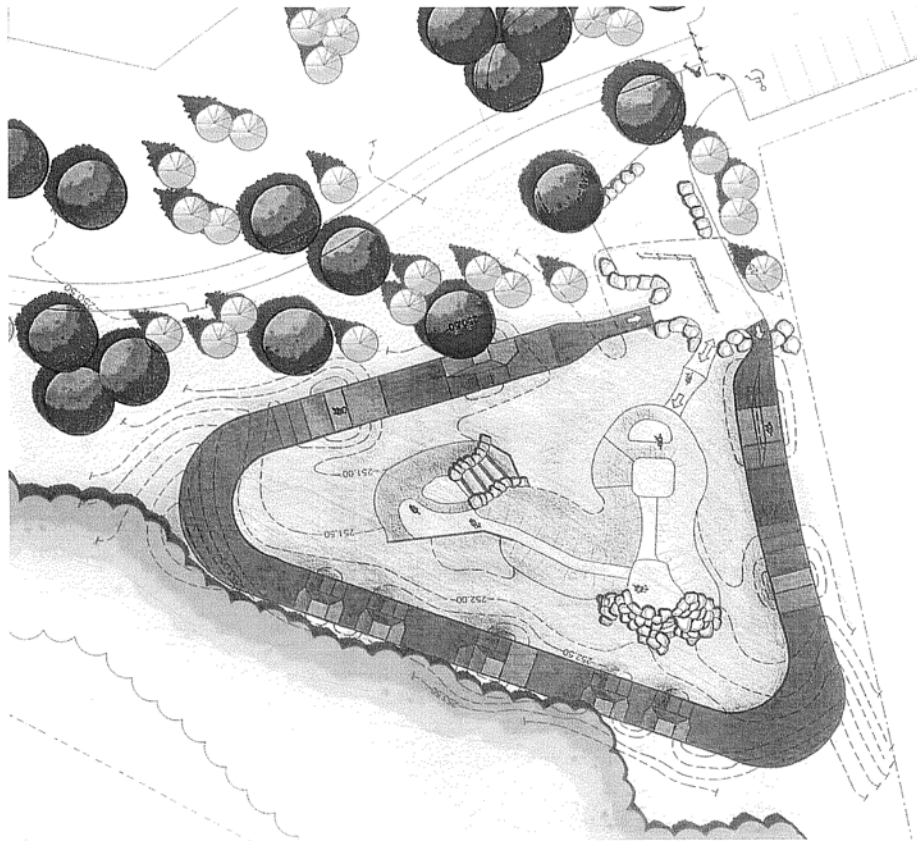


Property just off Georgian trail



Thornbury Waste Water Plant





Example of Bike Park layout