

**STAFF REPORT: Recreation Department**



**REPORT TO: Council**  
**MEETING DATE: January 14, 2008**  
**REPORT NO.: DOR.08. 01**  
**SUBJECT: Georgian Trail Crossing Points**  
**PREPARED BY: Shawn Everitt**  
**Director of Recreation**

### **A. Recommendation**

That Council receive Staff Report DOR.08.01, and requests support from the Ministry of Transportation, Town of Meaford, Town of Collingwood, Georgian Trail Board of Management and the Georgian Cycle and Ski Trail Association to develop a plan to enhance the Highway 26 and Lakeshore Road intersection crossing point to ensure a safe and adequate crossing for all users of the Georgian trail.

### **B. Background**

At the December 7, 2007 Planning Meeting of Council, Councilor Bob Gamble noted that The Georgian Trail Board of Management requests that a plan be developed to improve safety measures of the Pedestrian Crossing on Highway 26 at Lakeshore Road in Thornbury at GPS coordinates (X 545325.5473 Y 4933068.8337). This intersection is in the middle of a double horizontal curve of Highway 26 and currently has pedestrian crossing identification signs in both directions. The speed limit is 80 kilometers in this section of Highway.

The Director of Engineering and Public Works has had ongoing correspondence and discussions with the MTO regarding this crossing location over the past year. Possible options discussed were a speed reduction to 60 km/hr from Thornbury to a safe distance east of the trail crossing or the installation of trail user activated flashing warning signs. To date a decisive response has not been received from MTO.

The Recreation Department has taken part in 2 major Planning Activities in the last three years. In 2006 the Leisure Activities Plan was approved by Council, and in 2007, a Parks and Trails Master Plan has been developed to a draft form. Through these processes a series of Public Focus Group sessions were held and comments from these sessions throughout, were the unique and beneficial assets that the Georgian Trail provides and the unsafe pedestrian crossing at this, the only crossing of Highway 26.

Recreation Department Staff took the opportunity to go on site to see first hand some of the issues being raised. Staff recorded the amount of time it took for a

vehicle to reach the intersection point from the time that a vehicle was visible. The average amount of time was 4 seconds. Staff has also recorded the time to reach the intersection point from the trail being visible while driving a vehicle at 80 kilometers per hour confirming 5 seconds. The difference of 2 seconds was identified at 60 Kilometers per hour with 7 seconds to reach the intersection point. It was also recorded that it was 2.5 seconds to the intersection from the actual existing trail crossing signs.

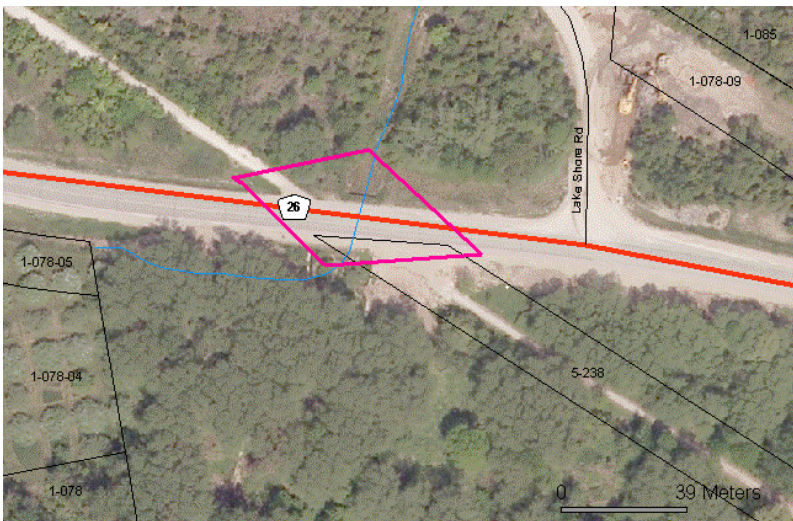
It is being recommended by Staff that a strong emphasis on the Ministry of Transportation to provide approval for manually activated trail crossing warning signals, with potential cost sharing from the Georgian Trail Board of Management and Ministry of Transportation to complete the project. The installation on Highway 26 of manually activated trail crossing warning signals in both directions at a minimum of 140 meters from the intersection crossing point. The Town's Standard Policy PW-RD-1 regarding Municipal Highway Entrances states 140 meters as the minimum sign distance in an 80 kilometer per hour speed zone, to ensure a safe and adequate crossing for all users of the trail.

Staff is also recommending that future discussions take place with Town of Meaford, Town of Collingwood, Town of The Blue Mountains and the Georgian Trail Board of Management and determine requirements of all pedestrian crossings and intersections to ensure consistent signage and safe trail use.





Intersection views toward Thornbury



GPS Coordinates X 545325.5473  
Y 4933068.8337

**C. The Blue Mountains' Strategic Plan** (Statement(s) identifying how actions further the goals of the Strategic Plan)

Supporting the development of social and recreational programs to meet the broad range of needs in the community

**GOAL:** Supporting the development of social and recreational programs to meet the broad range of needs in the community.

**D. Budget Impact** (cc: Treasury if required)

None at this time

**E. Attached** (Relevant documentation not personal information about an identifiable person)

- 1) Town of the Blue Mountains Standard Policy  
PW-RD-1 Municipal Highway Entrances

Respectfully submitted;

Shawn Everitt, Director of Recreation