



Variety of Window Shapes



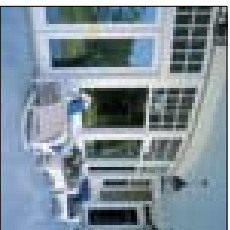
Window & Trim Matching  
Roof Colour



Simple "punched" window w/  
minimal contrasting trim



Steel Sash In Brick



Glass In light frame  
contrasting floor and ceiling



Contrasting Windows & Trim  
on Light Coloured Porch



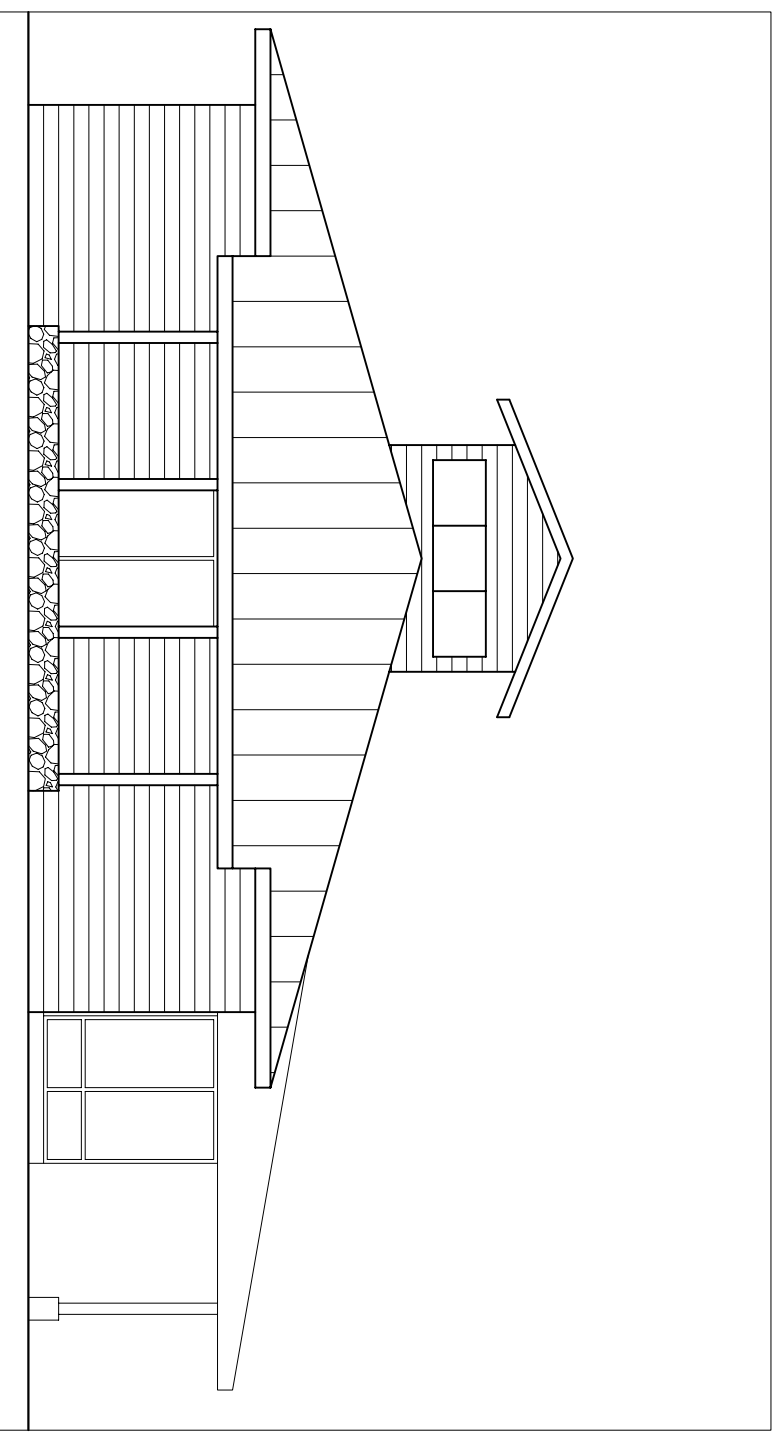
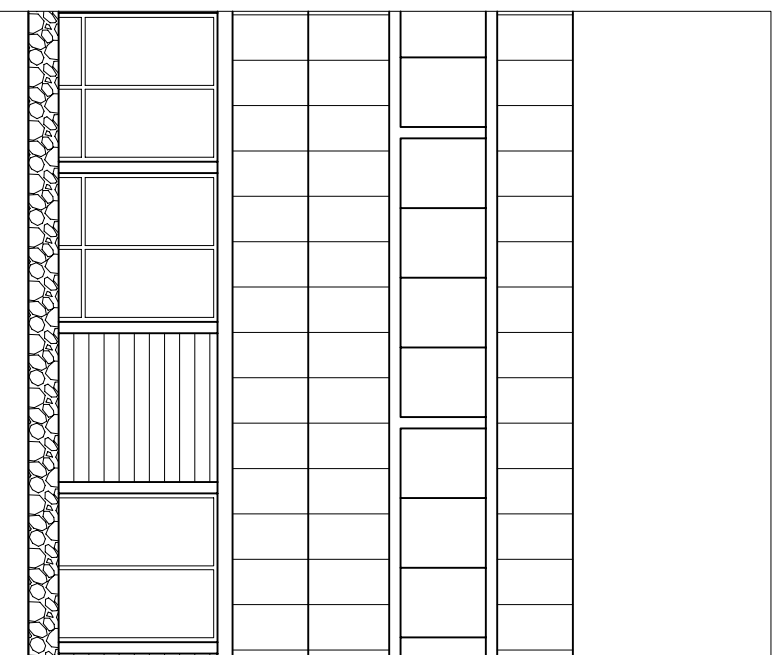
Matching Window, Sliding,  
Trim & Handrail



Stone Brick, Awnings &  
Contrasting Spandrel



Storefront and Window Variety In Unifying Brick Frame



**Additional Green Standards**

- encourage the use of sustainable and local materials
- encourage the use of rainwater harvesting from roof tops
- site design anticipates use of buses and possible city bus infrastructure
- bicycle paths and bike parking
- major entrances are located close to the street and most have drop off pick up areas
- buildings connected on the site via pedestrian paths to off-site pedestrian walkways, future transit areas and parking (car & bike)
- main entrances and outdoor waiting areas covered for sun and inclement weather protection
- use energy efficient, pedestrian specific lighting directed onto sidewalks, pathways, entrances and outdoor waiting areas
- design building to achieve at least 25% efficiency improvement over the MN/ECB (Model National Energy Code for Buildings)
- install energy efficient fixtures in all buildings (EnergyStar)
- plant material to all be water efficient
- plant native species

**Fenestration**

Typical windows are vertically proportioned and can be subdivided into two categories: tall, narrow windows where window heights are at least 2.5 times the window width and wider windows where the heights are approximately 2.15 times the window width.

Multipaned windows should use real muntion bars that project from the glass.

Windows should use similar portions throughout a specific building.

In some instances special windows are required in dormers and clerestories. These windows should be proportioned to fit into the projecting element and relate to the rest of the building.

Trim should be substantial and should help to create depth through colour and or size.

Typical entry doors are paneled with side lights and transoms included in more formal compositions. Door panel configurations range from two panels with a window, to patterns of four, six or eight panels.

Windows should be minimum double glazed argon filled. Windows should be energy efficient.