

PART 5,
16R-4236
GREY
CONDOMINIUM
PLAN N° 35

PART 1, 16R-3520
PARK LOT 6

REGISTERED

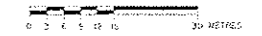
ORCHARD DRIVE
(E.P. 95.4)

PLAN 954

PARK
LOT 5

SKETCH OF PROPOSED DEVELOPMENT
PART OF PARK LOT 4
TOWNPLOT OF THORNBURY
SOUTHWEST OF NAPIER STREET
(FORMERLY TOWN OF THORNBURY)
TOWN OF THE BLUE MOUNTAINS
COUNTY OF GREY

SCALE 1:750



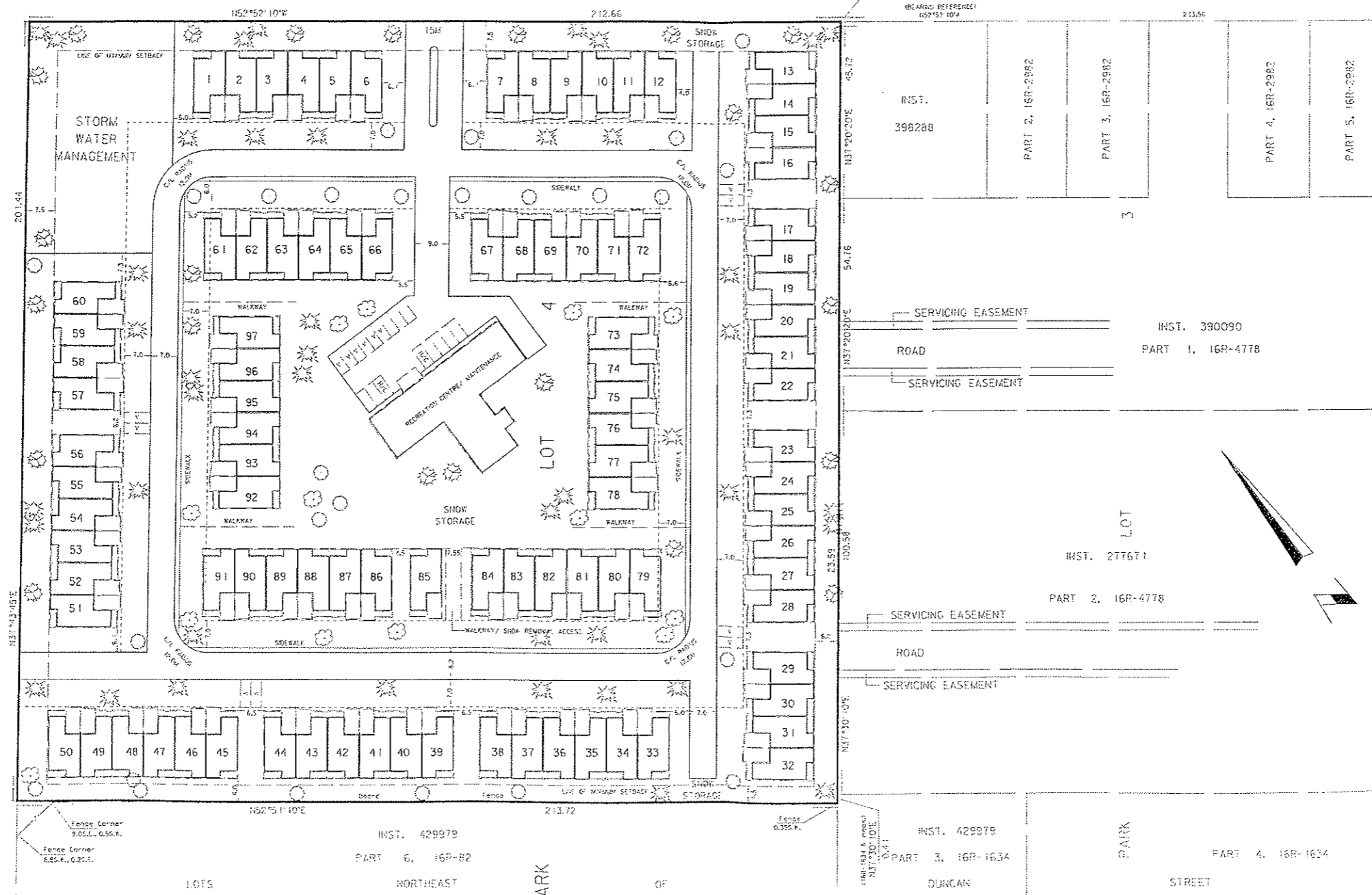
ZUBER, EMG, PATTEN & THOMSEN LTD.
2008

METRIC

DISTANCES ON THIS PLAN ARE IN METRES AND CAN
BE CONVERTED TO FEET BY DIVIDING BY 0.3048

PARK LOT 5
(TOWNPLOT OF THORNBURY)

NAPIER STREET (TOWNPLOT OF THORNBURY)



West City Angle
FOR LOT 4
S.W. Corner St.
BEARING REFERRED
102°51'10" E

INST. 398288
PART 2, 16R-2982
PART 3, 16R-2982
PART 4, 16R-2982
PART 5, 16R-2982

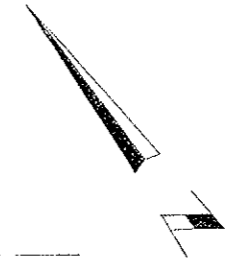
INST. 390090
PART 1, 16R-4778
SERVICING EASEMENT
ROAD
SERVICING EASEMENT

INST. 277671
PART 2, 16R-4778
SERVICING EASEMENT
ROAD
SERVICING EASEMENT

INST. 429979
PART 3, 16R-1634
PART 4, 16R-1634

NOTES:
THIS IS NOT A PLAN OF SURVEY. BEARINGS AND DISTANCES
HEREON ARE DERIVED FROM THE NOTES AND RECORDS IN
THE OFFICE OF ZUBER, EMG, PATTEN AND THOMSEN LTD., O.L.S.

TOTAL AREA = 42940m²
SWM AREA = 2190m²



ZUBER, EMG
PATTEN
&
THOMSEN
ONTARIO LAND SURVEYORS
39 STEWART ROAD
COLLINGWOOD, ONTARIO L9Y 4M7