

**LEGEND:**

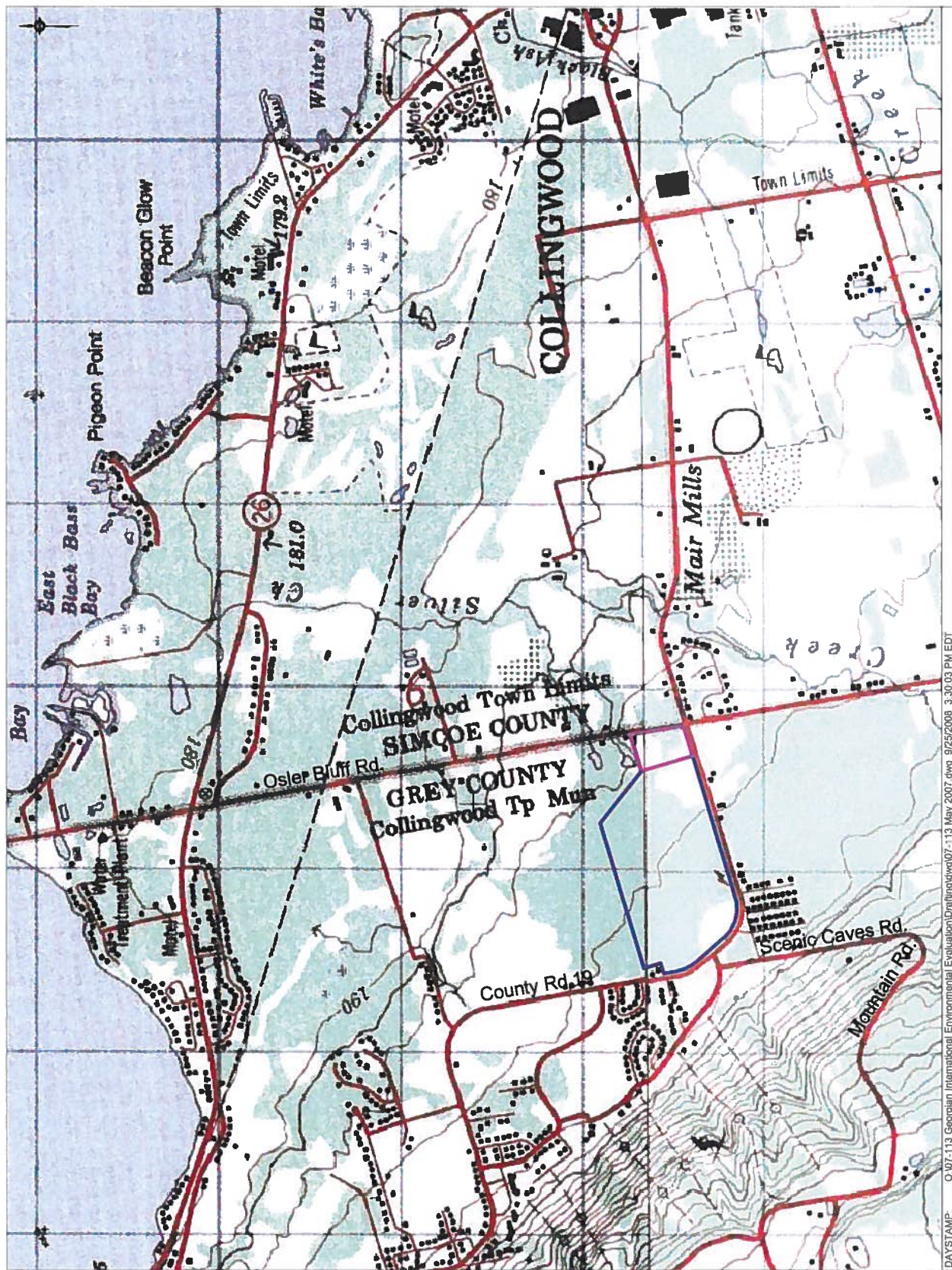
- Study Area
- Medium Density Block



**REGIONAL LOCATION MAP**

Georgian International Environmental Evaluation  
 Pl. Lot 16, Con. 1  
 Town of Blue Mountains

Date Issued:	August 2014	Figure No.	1
Created By:	JLM		
Project No.	07-113		
Reference:	Solmap Technologies Inc.		



DAYSTAMP: O:\07-113 Georgian International Environmental Evaluation\Drafting\dwg\07-113 May 2007.dwg 9/25/2008 3:30:03 PM EDT

**LEGEND:**

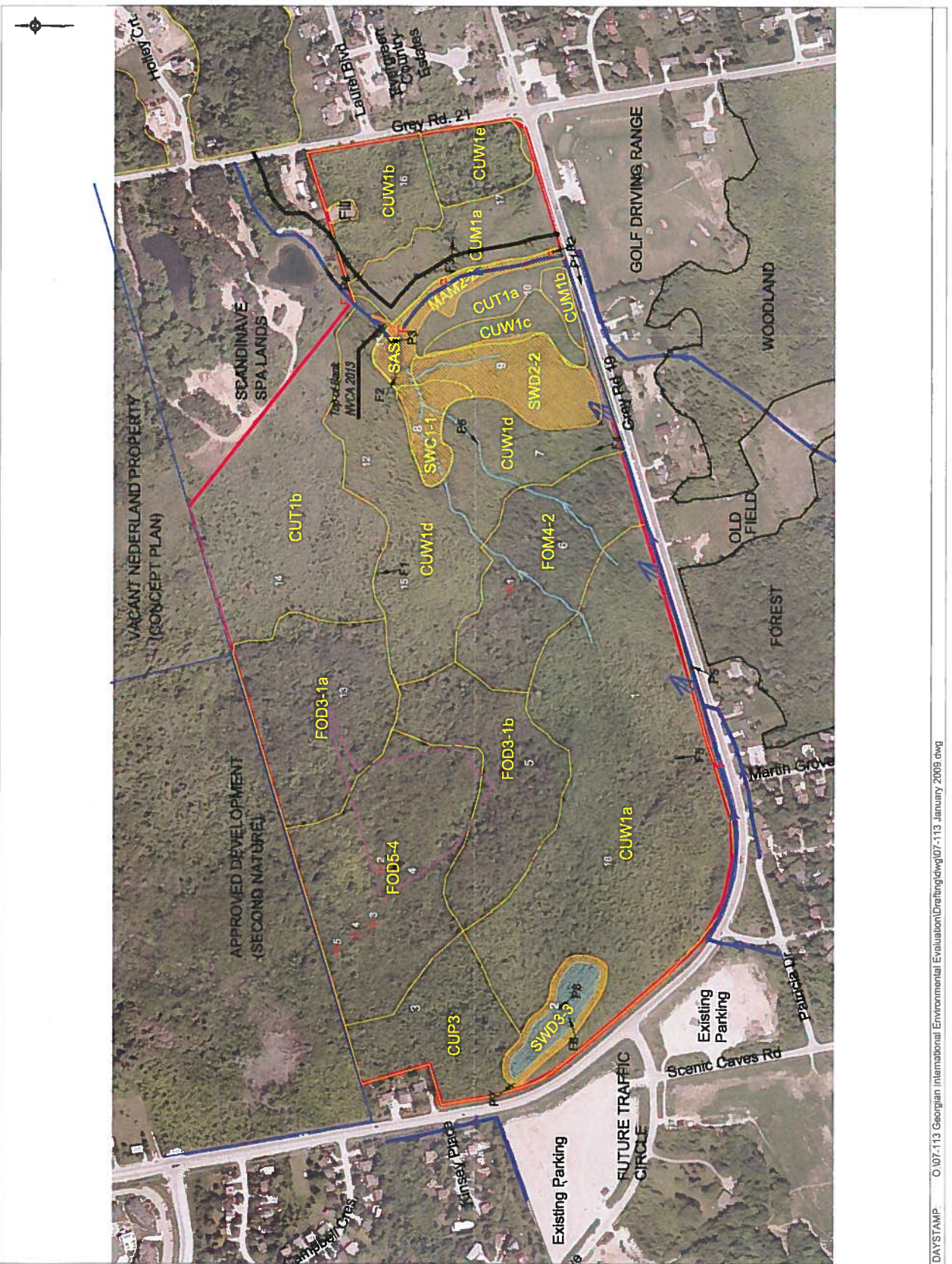
- Property Boundary (Approx.)
- Adjacent Property Boundary
- Wetlandcourse
- Drainage Channel
- Top of Bank
- 30m Buffer to Watercourse
- Vegetation Community Boundary (See Table 1 for Community Descriptions)
- 100m Forest Interior
- Butternut Tree
- Fish Observed
- Photo Location & Direction
- Area of Wetland Habitat
- Standing Water (Permanent)
- Standing Water (Seasonal)
- Bird Survey 2008 Point Count Stations
- Frog Call 2008 Sample Location & Direction
- Roadside Ditch 'Spill'

SCALE 1:5,000  
50m 0 100m 200m

**Georgian Gale**  
Pt. Lot 16, Con. 1  
Town of Blue Mountains

**EIS UPDATE**  
**ENVIRONMENTAL FEATURES**  
**MEDIUM DENSITY BLOCK**

Date Issued:	August 2014	Figure No.	
Created By:	JLM		
Project No.:	07-113		<b>2</b>
Reference:	First Base Solutions		





**WINDFALL MEDIUM DENSITY DEVELOPMENT**



dwg. **B**

**CONCEPT PLAN**

May 14, 2014

SCALE: 1:500 @ 24"x36"