

**PLAN OF SURVEY OF
PART OF LOT 26
CONCESSION 5
(GEOGRAPHIC TOWNSHIP OF COLLINGWOOD)
TOWN OF THE BLUE MOUNTAINS
COUNTY OF GREY**

SCALE 1 : 400
VAN HARTEN SURVEYING INC.

THE INTENDED PLOT SIZE OF THIS PLAN IS 610mm IN WIDTH BY 915mm IN HEIGHT WHEN PLOTTED AT A SCALE OF 1:400

- LEGEND:**
- SURVEY MONUMENT SET
 - SURVEY MONUMENT FOUND
 - SIB .025 X .025 X 1.20 STANDARD IRON BAR
 - IB .015 X .015 X 0.60 IRON BAR
 - SSIB .025 X .025 X 0.60 SHORT STANDARD IRON BAR
 - RP .025 DIA. X 0.07 ROUND IRON BAR WITH STAMPED WASHER
 - PB .025 X .025 X 0.30 PLASTIC BAR
 - CC CUT CROSS
 - WIT WITNESS
 - OU ORIGIN UNKNOWN
 - VH VAN HARTEN SURVEYING INC., O.L.S.'S
 - N, E, S, W NORTH, EAST, SOUTH, WEST
 - P1 REGISTERED PLAN 16M-62
 - P2 REGISTERED PLAN 16M-37
 - P3 PLAN 16R-10553
 - P4 GREY VACANT CONDOMINIUM PLAN 110
 - 1063 ROBERT W. MACKEY, O.L.S.
 - H&M HEWITT & MILNE LTD., O.L.S.'S
 - ZUMO ZUBEK, EMO, PATTEN & THOMSEN LTD., O.L.S.'S
 - S/T SUBJECT TO
 - INST. REGISTRY OFFICE INSTRUMENT
 - R.O.W. RIGHT OF WAY
 - (R) NON-CONVERT PIN REMAINING IN LAND REGISTRY SYSTEM

- TOPOGRAPHIC LEGEND**
- OVERHEAD BELL
 - OVERHEAD HYDRO
 - FENCELINE
 - DITCH/SWALE
 - CENTRELINE OF ROAD
 - EDGE OF BUSH
 - TOP OF BANK
 - FINISHED FLOOR ELEVATION FF=206.33
 - TOP OF WALL TW 206.33
 - BOTTOM OF WALL BW 206.33
 - TOP OF CURB TC 206.33
 - BOTTOM OF CURB BC 206.33
 - EXISTING ELEVATION x=206.55
 - MEASURED INVERT INV=300.00
 - BELL PEDESTAL BELL
 - HYDRO POLE HP
 - GUY WIRE GUY
 - LIGHT STANDARD LS
 - TRANSFORMER PAD TPAD
 - FENCE POST POST
 - DECIDUOUS TREE
 - BUSH
 - WATER
 - GRAVEL
 - GAS VALVE GV
 - MANHOLE MH
 - WATER VALVE WV
 - HYDRO VAULT VAULT
 - CATCHBASIN CB
 - HYDRO METER HM
 - CONIFEROUS TREE
 - SAPLING SACP or SAPD
 - ASPHALT
 - PAVESTONE

CALL BEFORE YOU DIG
THE LOCATION OF SERVICES ON THIS DRAWING ARE ONLY APPROXIMATE AND BASED ON SURFACE FEATURES LOCATED AT THE TIME OF THE TOPOGRAPHIC SURVEY. PRIOR TO ANY CONSTRUCTION IT IS THE RESPONSIBILITY OF THE CONTRACTOR/BUILDER TO ENSURE THE EXACT LOCATION OF ALL UTILITIES.

BENCHMARK:
ELEVATIONS ARE BASED ON GPS OBSERVATIONS TO PERMANENT REFERENCE STATIONS IN THE NAD83 (CSRS-2010) COORDINATE SYSTEM AND HAVE BEEN CORRECTED TO ORTHOMETRIC ELEVATIONS ON THE CGVD28 DATUM (1978 ADJUSTMENT) WITH GEOID MODEL HTV2.0, AS SUPPLIED BY NATURAL RESOURCES CANADA.
SITE BM1: CUT CROSS ON TRANSFORMER PAD, 179.11m.
SITE BM2: CUT CROSS ON CONCRETE HEAD WALL, 181.53m.

NOTES:

- BEARINGS ARE GRID BEARINGS AND ARE DERIVED FROM GNSS OBSERVATIONS AND ARE REFERRED TO THE UTM PROJECTION, ZONE 17, NAD 83-CSRS (2010) ADJUSTMENT.
- DISTANCES SHOWN ON THE PLAN ARE ADJUSTED GROUND DISTANCES AND CAN BE CONVERTED TO UTM GRID DISTANCES BY MULTIPLYING BY AN AVERAGED COMBINED SCALE FACTOR OF 0.999607.
- THE ORIGINAL VERSION OF THIS PLAN WAS PREPARED IN COLOUR.

METRIC:
DISTANCES ON THIS PLAN ARE MEASURED IN METRES AND CAN BE CONVERTED TO FEET BY DIVIDING BY 0.3048.

SURVEYOR'S CERTIFICATE
I CERTIFY THAT:
1. THIS SURVEY AND PLAN ARE CORRECT AND IN ACCORDANCE WITH THE SURVEYS ACT, THE SURVEYORS ACT AND THE REGULATIONS MADE UNDER THEM.
2. THIS SURVEY WAS COMPLETED ON THE 18th DAY OF OCTOBER, 2024.
DATE: NOVEMBER 14, 2024

RONALD MAK
ONTARIO LAND SURVEYOR

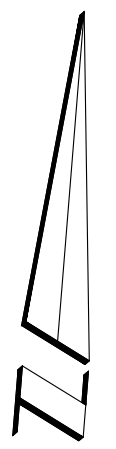
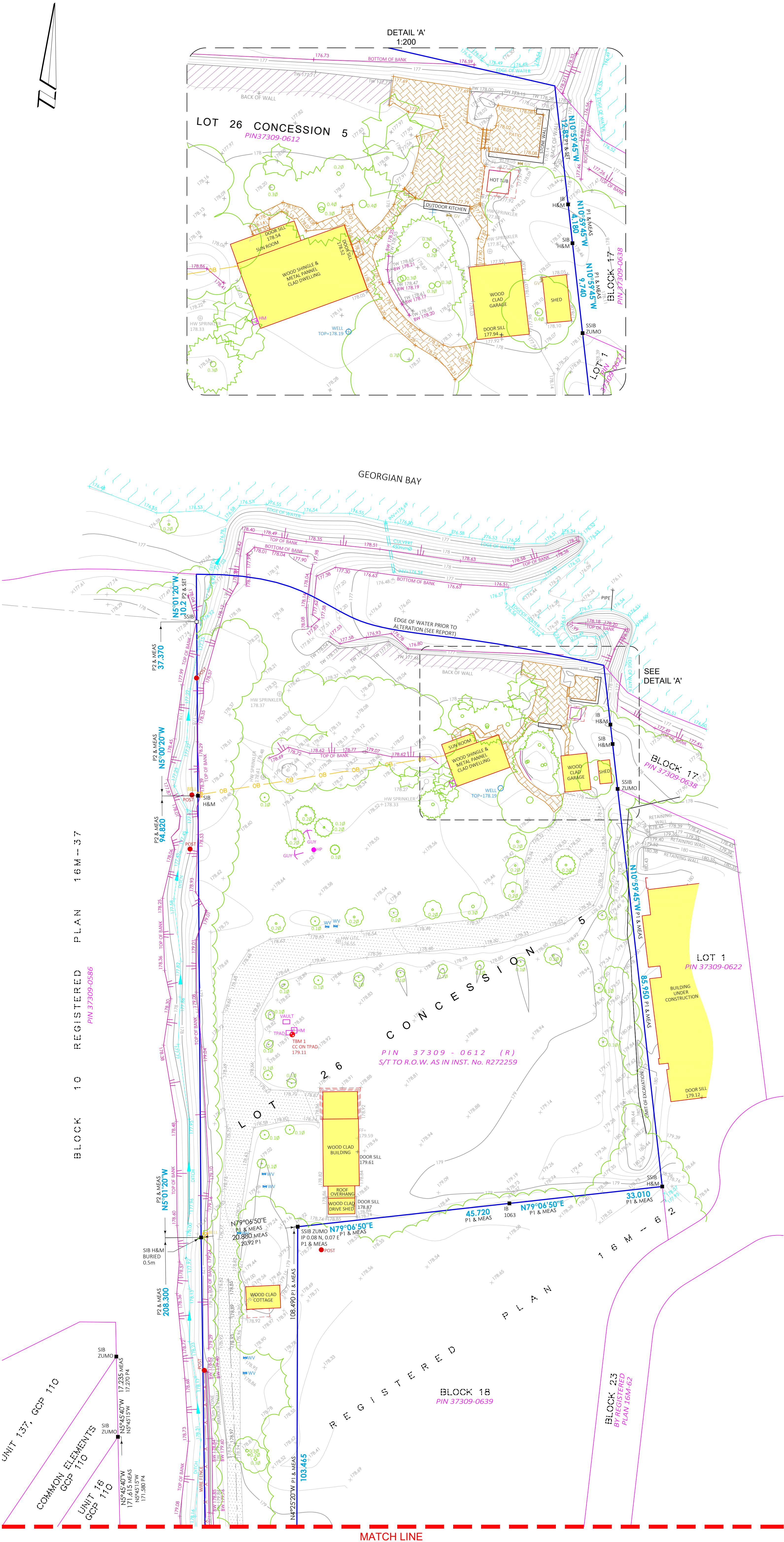
THIS PLAN OF SURVEY RELATES TO AOLS PLAN SUBMISSION FORM NUMBER 221773.

Van Harten
LAND SURVEYORS - ENGINEERS

Kitchener/Waterloo Ph: 519-742-8371 Guelph Ph: 519-821-2763 Orangeville Ph: 519-940-4110

www.vanharten.com info@vanharten.com

DRAWN BY: TJH CHECKED BY: RM PROJECT No: 33741-24
Oct 11, 2024-1:18:09 PM
G:\COLLINGWOOD TWP\CON 5\ACAD\POIS\LOT26\SEKELY (33741-24) UTM 2010.dwg
© 2024 VAN HARTEN SURVEYING INC. NO PERSON MAY COPY, REPRODUCE, DISTRIBUTE OR ALTER THIS PLAN IN WHOLE OR IN PART WITHOUT THE WRITTEN PERMISSION OF VAN HARTEN SURVEYING INC.



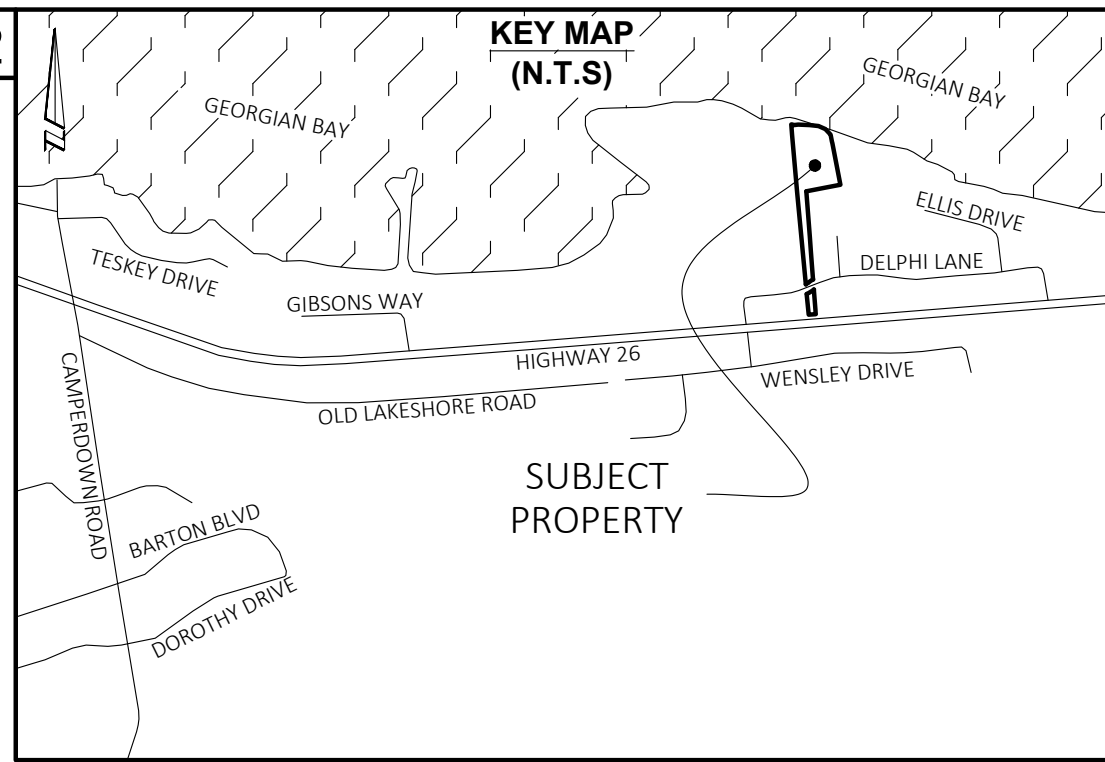
DETAIL 'A'
1:200

BLOCK 10 REGISTERED PLAN 16M-37
PIN 37309-0596

BLOCK 18 REGISTERED
PIN 37309-0639

BLOCK 23 BY REGISTERED PLAN 16M-62

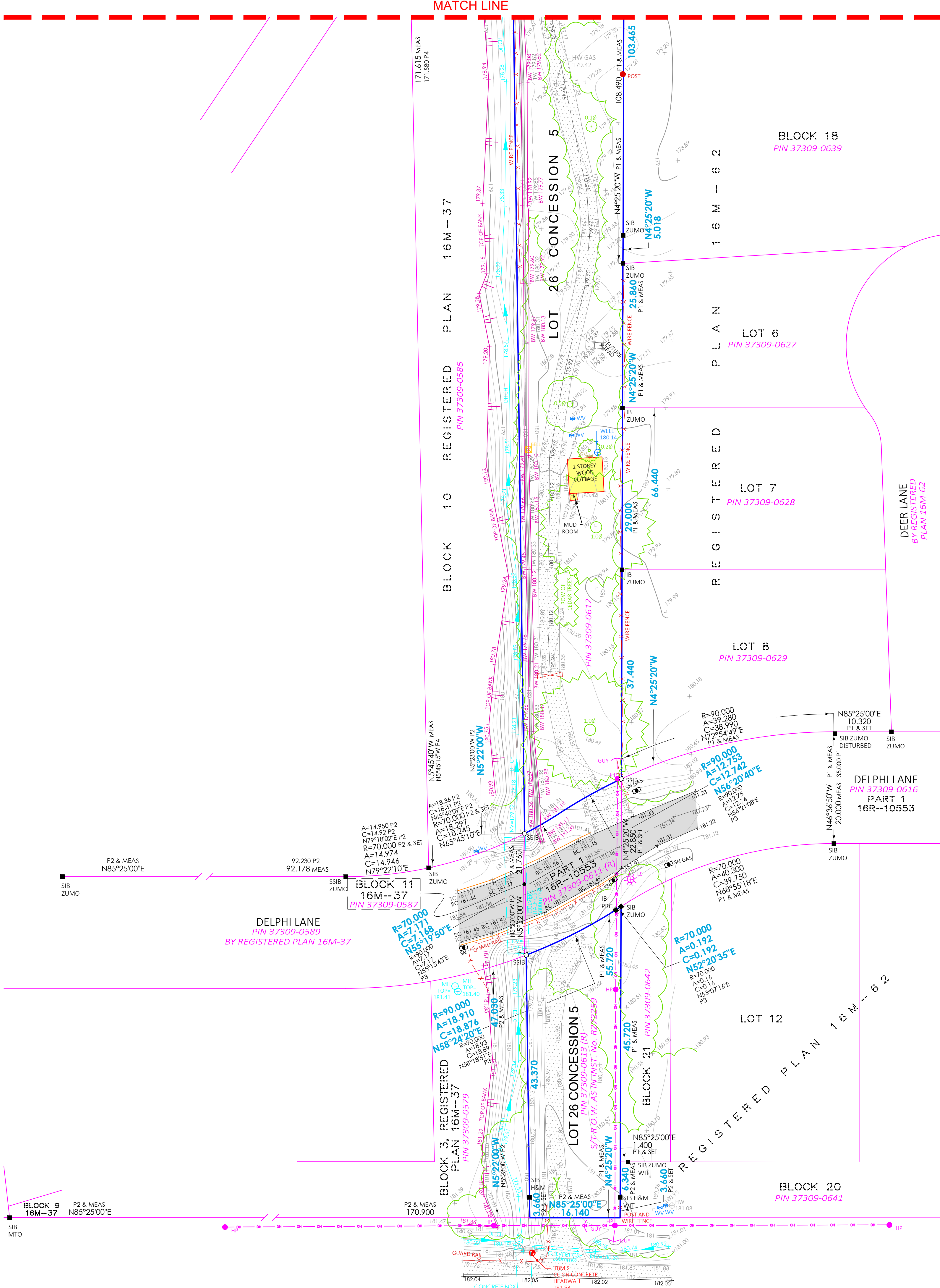
MATCH LINE



**PLAN OF SURVEY OF
PART OF LOT 26
CONCESSION 5
(GEOGRAPHIC TOWNSHIP OF COLLINGWOOD)
TOWN OF THE BLUE MOUNTAINS
COUNTY OF GREY**

SCALE 1 : 400
VAN HARTEN SURVEYING INC.

THE INTENDED PLOT SIZE OF THIS PLAN IS 610mm IN WIDTH BY 915mm IN HEIGHT WHEN PLOTTED AT A SCALE OF 1:400



- LEGEND:**
- SURVEY MONUMENT SET
 - SURVEY MONUMENT FOUND
 - SIB .025 X .025 X 1.20 STANDARD IRON BAR
 - IB .015 X .015 X 0.60 IRON BAR
 - SSIB .025 X .025 X 0.60 SHORT STANDARD IRON BAR
 - RP .015 DIA. X 0.07 ROUND IRON BAR WITH STAMPED WASHER
 - FB .025 X .025 X 0.30 PLASTIC BAR
 - CC CUT CROSS
 - WIT WITNESS
 - OU ORIGIN UNKNOWN
 - VH VAN HARTEN SURVEYING INC., O.L.S.'S
 - N, E, S, W NORTH, EAST, SOUTH, WEST
 - P1 REGISTERED PLAN 16M-62
 - P2 REGISTERED PLAN 16M-37
 - P3 PLAN 16R-10553
 - P4 GREY VACANT CONDOMINIUM PLAN 110
 - 1063 ROBERT W. MACKEY, O.L.S.
 - H&M HEWETT & MILNE LTD., O.L.S.'S
 - ZUMO ZUBEK, EMO, PATTEN & THOMSEN LTD., O.L.S.'S
 - S/T SUBJECT TO
 - INST. REGISTRY OFFICE INSTRUMENT
 - R.O.W. RIGHT OF WAY
 - (R) NON-CONVERT PIN REMAINING IN LAND REGISTRY SYSTEM

- TOPOGRAPHIC LEGEND**
- OVERHEAD BELL
 - OVERHEAD HYDRO
 - FENCELINE
 - DITCH/SWALE
 - CENTRELINE OF ROAD
 - EDGE OF BUSH
 - TOP OF BANK
 - FINISHED FLOOR ELEVATION
 - TOP OF WALL
 - BOTTOM OF WALL
 - TOP OF CURB
 - BOTTOM OF CURB
 - EXISTING ELEVATION
 - MEASURED INVERT
 - BELL PEDESTAL
 - HYDRO POLE
 - GUY WIRE
 - LIGHT STANDARD
 - TRANSFORMER PAD
 - FENCE POST
 - DECIDUOUS TREE
 - BUSH
 - WATER
 - GRAVEL
 - OB
 - OH
 - X-X-X-X
 -
 -
 -
 - FF=206.33
 - TW 206.33
 - BW 206.33
 - TC 206.33
 - BC 206.33
 - ×206.55
 - INV=300.00
 - GAS VALVE
 - MANHOLE
 - WATER VALVE
 - HYDRO VAULT
 - CATCHBASIN
 - HYDRO METER
 - GV
 - MH
 - WV
 - VAULT
 - CB
 - HM
 - CONIFEROUS TREE
 - SAPLING
 - SAPC or SAPD
 - ASPHALT
 - PAVESTONE

CALL BEFORE YOU DIG

THE LOCATION OF SERVICES ON THIS DRAWING ARE ONLY APPROXIMATE AND BASED ON SURFACE FEATURES LOCATED AT THE TIME OF THE TOPOGRAPHIC SURVEY. PRIOR TO ANY CONSTRUCTION IT IS THE RESPONSIBILITY OF THE CONTRACTOR/BUILDER TO ENSURE THE EXACT LOCATION OF ALL UTILITIES.

BENCHMARK:

ELEVATIONS ARE BASED ON GPS OBSERVATIONS TO PERMANENT REFERENCE STATIONS IN THE NAD83 (CSRS-2010) COORDINATE SYSTEM AND HAVE BEEN CORRECTED TO ORTHOMETRIC ELEVATIONS ON THE CGVD28 DATUM (1978 ADJUSTMENT) WITH GEOID MODEL HTV2.0, AS SUPPLIED BY NATURAL RESOURCES CANADA.

SITE BM1: CUT CROSS ON TRANSFORMER PAD, 179.11m.

SITE BM2: CUT CROSS ON CONCRETE HEAD WALL, 181.53m.

- NOTES:**
- BEARINGS ARE GRID BEARINGS AND ARE DERIVED FROM GNSS OBSERVATIONS AND ARE REFERRED TO THE UTM PROJECTION, ZONE 17, NAD 83-CSR5 (2010) ADJUSTMENT.
 - DISTANCES SHOWN ON THE PLAN ARE ADJUSTED GROUND DISTANCES AND CAN BE CONVERTED TO UTM GRID DISTANCES BY MULTIPLYING BY AN AVERAGED COMBINED SCALE FACTOR OF 0.999607.
 - THE ORIGINAL VERSION OF THIS PLAN WAS PREPARED IN COLOUR.

METRIC:

DISTANCES ON THIS PLAN ARE MEASURED IN METRES AND CAN BE CONVERTED TO FEET BY DIVIDING BY 0.3048.

SURVEYOR'S CERTIFICATE

I CERTIFY THAT:

- THIS SURVEY AND PLAN ARE CORRECT AND IN ACCORDANCE WITH THE SURVEYS ACT, THE SURVEYORS ACT AND THE REGULATIONS MADE UNDER THEM.
- THIS SURVEY WAS COMPLETED ON THE 18th DAY OF OCTOBER, 2024

DATE: NOVEMBER 14, 2024

RONALD MAK
ONTARIO LAND SURVEYOR

THIS PLAN OF SURVEY RELATES TO AOLS PLAN SUBMISSION FORM NUMBER 2217773.

Van Harten
LAND SURVEYORS - ENGINEERS

Kitchener/Waterloo Ph: 519-742-8371 Guelph Ph: 519-821-2763 Orangeville Ph: 519-940-4110

www.vanharten.com info@vanharten.com

DRAWN BY: TJH CHECKED BY: RM PROJECT No. 33741-24
Oct 11, 2024-1:18:09 PM
G:\COLLINGWOOD TWP\CON 5\ACAD\PolS.LOT26.SZKELY (33741-24).UTM
2010.dwg

© 2024 VAN HARTEN SURVEYING INC. NO PERSON MAY COPY, REPRODUCE, DISTRIBUTE OR ALTER THIS PLAN IN WHOLE OR IN PART WITHOUT THE WRITTEN PERMISSION OF VAN HARTEN SURVEYING INC.