

Welcome

What is a Transportation Master Plan?

A **Transportation Master Plan (TMP)** is a long-term, strategic planning document that sets and prioritizes policy direction and infrastructure investment for the Municipality's transportation system. This will be Meaford's first comprehensive TMP.

Meaford's TMP will:

- 🎯 Establish a long-term plan for transportation for both the rural and urban contexts
- 🎯 Consider all modes of travel (i.e. driving, cycling, walking) and the movement of commercial vehicles (i.e., trucks, agricultural equipment)
- 🎯 Assess future mobility needs to support the economy and tourism and develop solutions to meet these needs
- 🎯 Provide recommendations on managing transportation infrastructure (roads, bridges) and improving safety and sustainability

Consultation Objectives:

- 💬 Hear your thoughts and suggestions for the study's vision, goals and directions
- 💬 Identify your most important transportation needs, issues and opportunities

Public Consultation Round #1
Spring 2020



Study Process

Phase 1: Establish Study Foundation (Spring 2020)

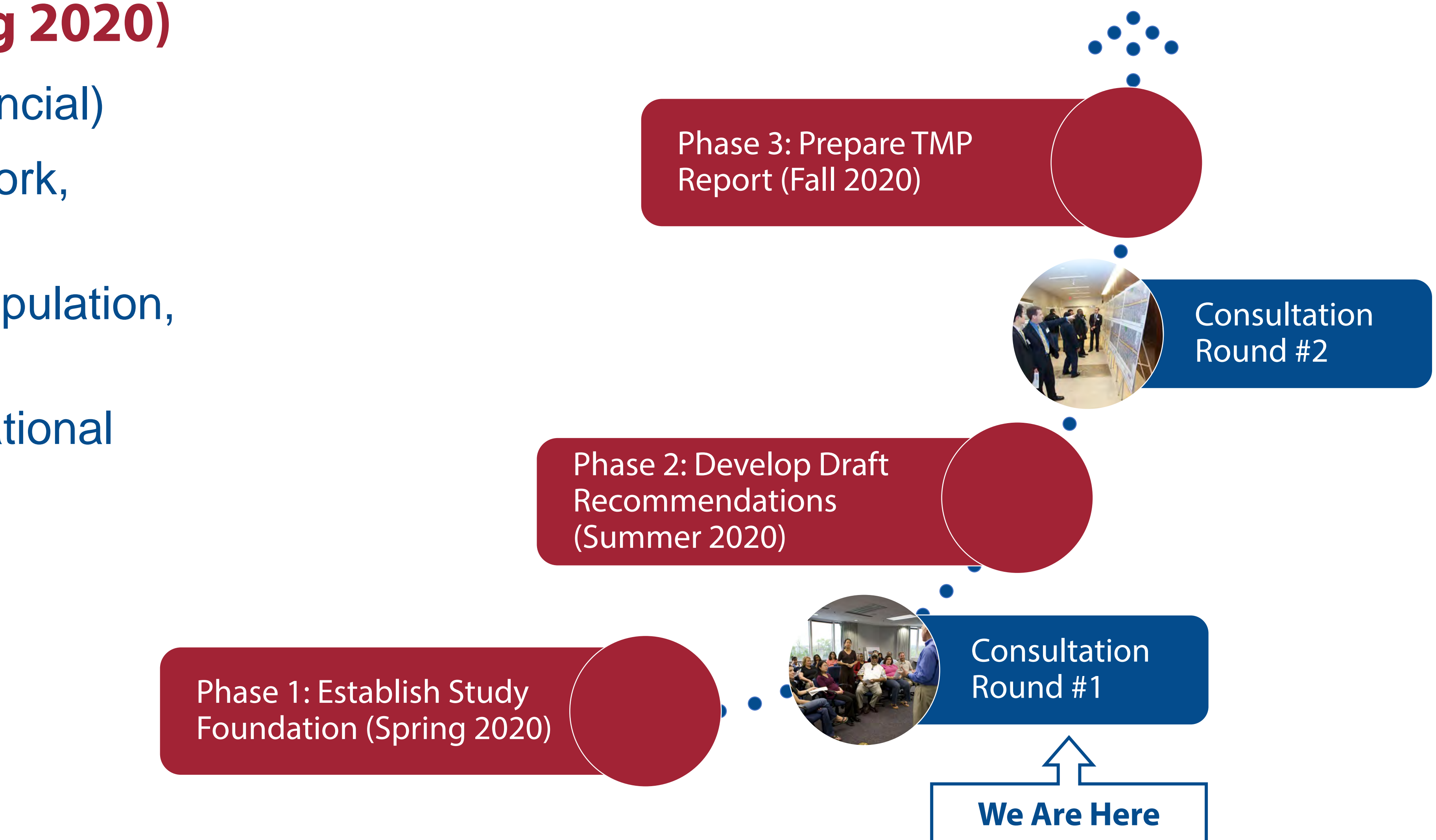
- Review the policy context (municipal, county, provincial)
- Assess existing conditions including the road network, active transportation (i.e. walking and cycling)
- Analyze recent trends and future projections for population, employment and travel demand
- Identify infrastructure and policy gaps, major operational issues and opportunities to improve the overall transportation system

Phase 2: Develop Draft Recommendations (Summer 2020)

- Develop solutions to address identified infrastructure gaps
- Develop supporting strategies and key policies

Phase 3: Prepare TMP Report (Fall 2020)

- Develop the implementation plan
- Estimate costs and identifying funding sources
- Prepare final TMP report for public review



How to Participate in the Meaford TMP Study:

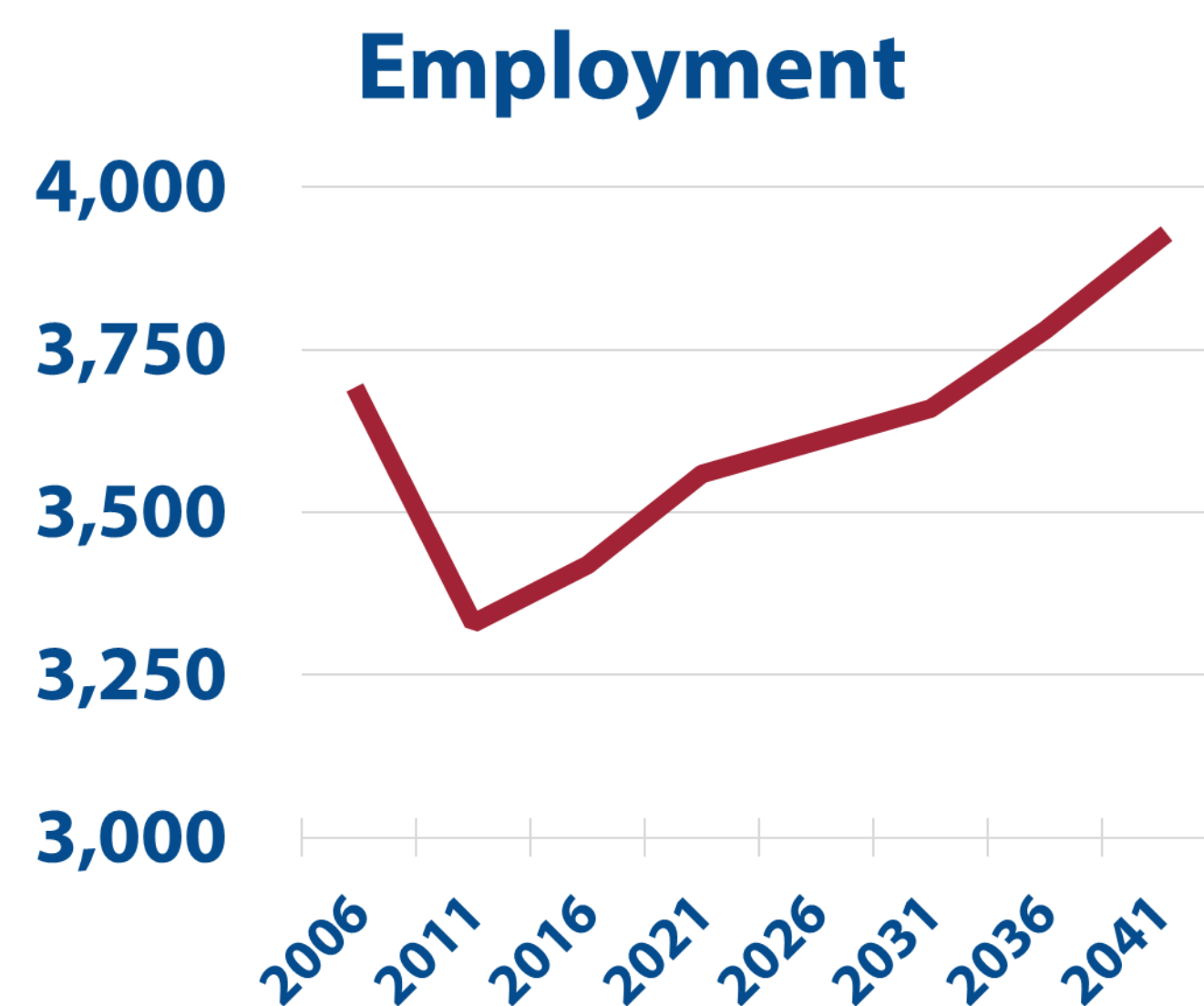
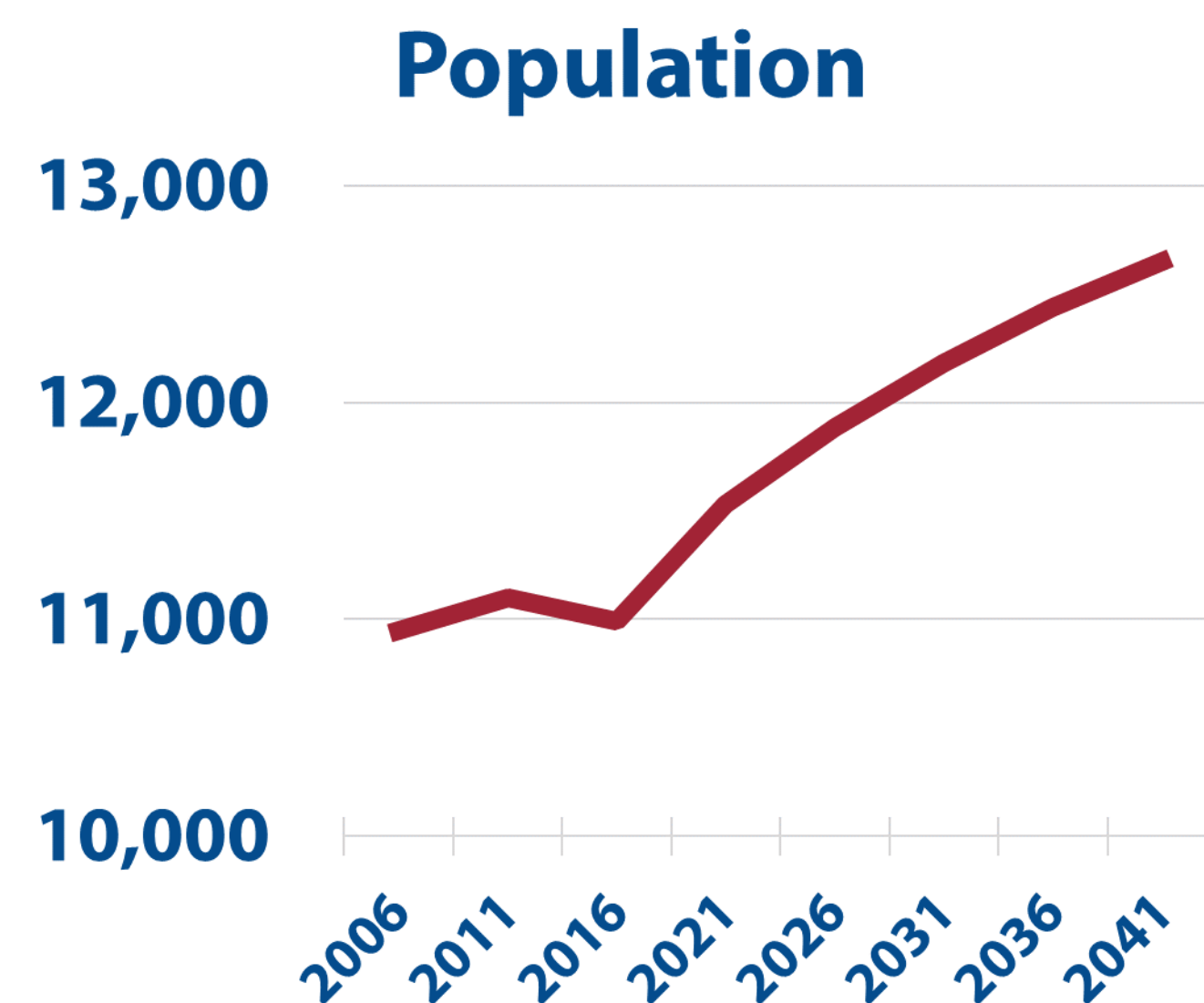
- Visit [Meaford.ca/TMP](https://meaford.ca/TMP) to stay informed on the latest news.
- Take the **public opinion survey** at [Meaford.ca/TMP](https://meaford.ca/TMP) or by calling **519-538-1060 ext. 1302** and help us finalize the vision and goals and identify your most important issues.
- **Contact the study team** by phone or by email at any time (contact info available on the Next Steps display board).

Demographic and Travel Trends



How is Meaford Growing?

- Between 2016 and 2041, Meaford's permanent population is forecasted to **grow by 15%** and employment within Meaford is forecasted to **grow by 13%**.

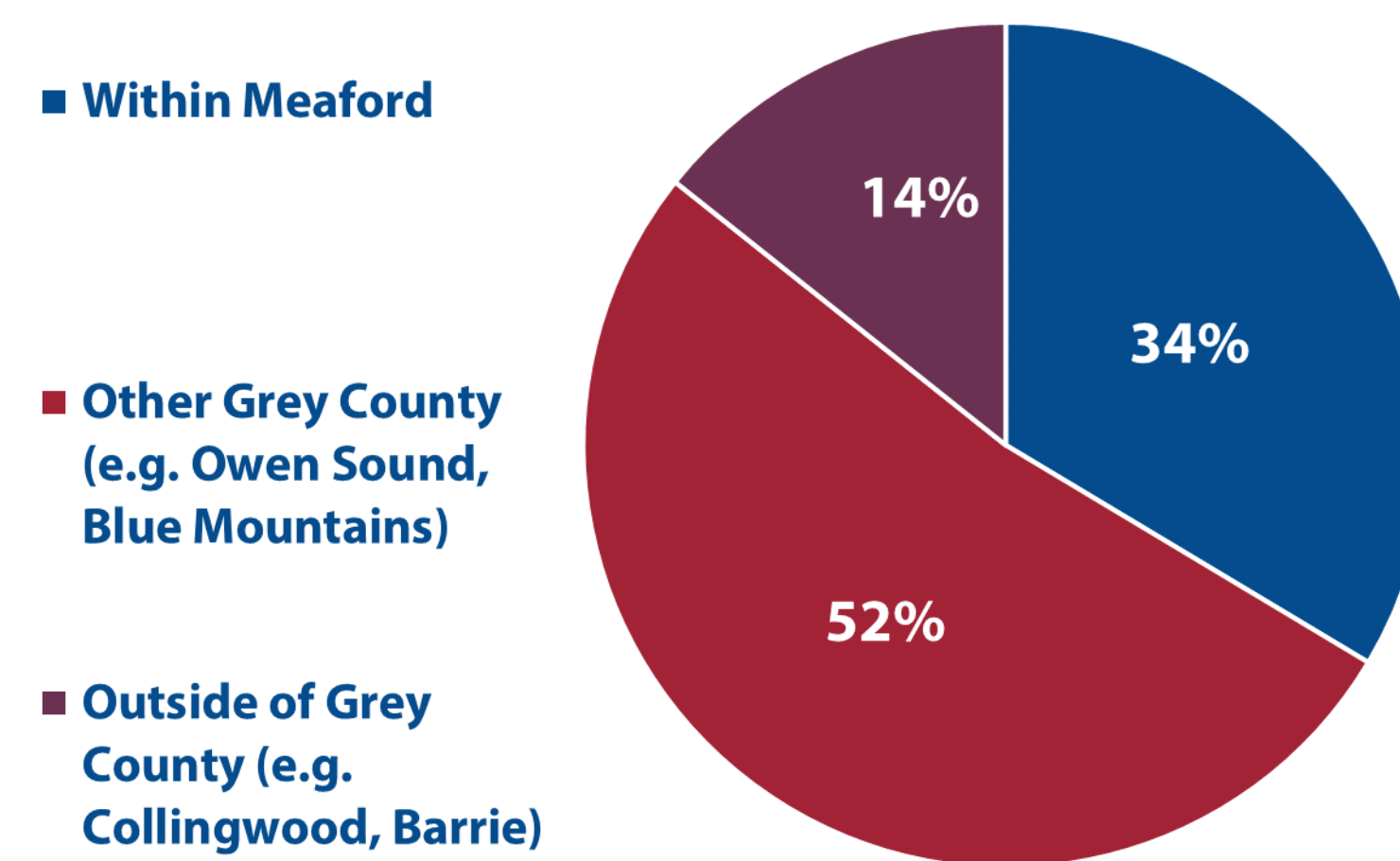


Source: Grey County Growth Management Strategy Update (2017)

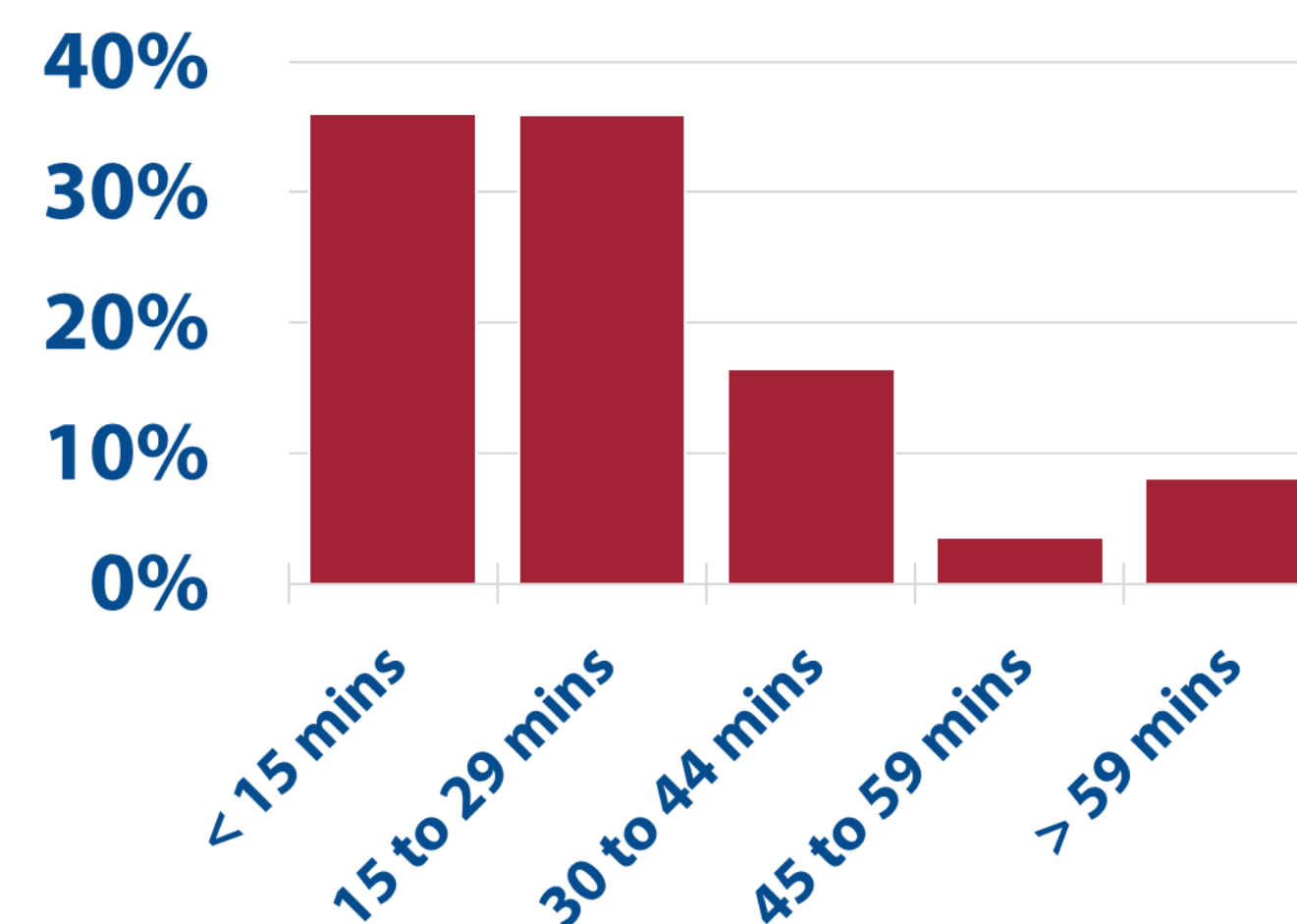
Where do Residents Work?

- **66%** of employed residents with a usual place of work **commute outside of Meaford**
- **72%** of commutes are **less than 30 minutes**

Commute Destination



Commute Duration

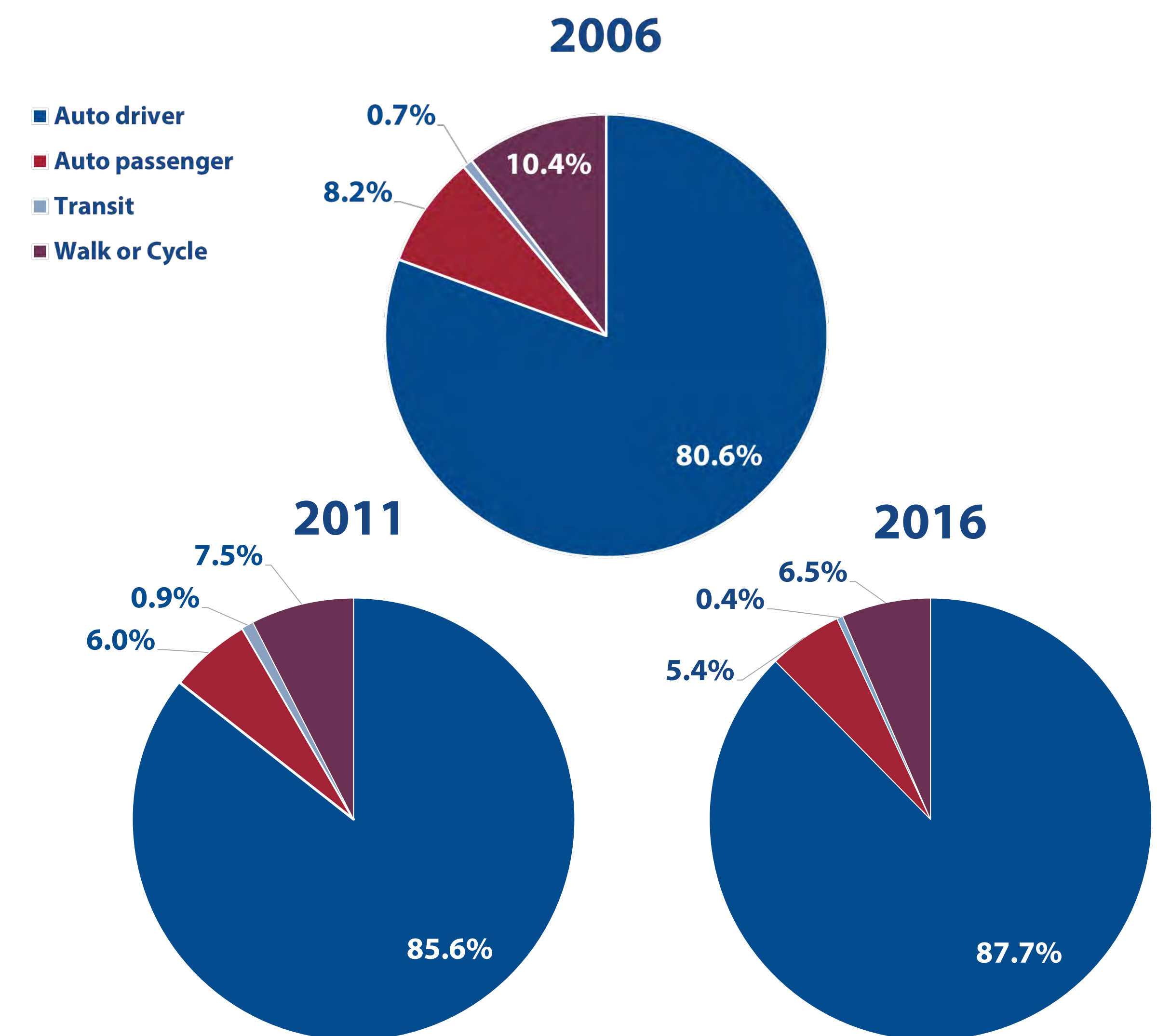


Source: Census of Population (2016)

How do Residents Travel To Work?

- **93%** of journeys to work are made in a **private vehicle** (as driver or passenger), a growing trend since 2006.
- **Active transportation** (walking and cycling) mode share has decreased from **10.4%** in 2006 to **6.5%** in 2016
- **10.7%** of urban area journeys to work are **made on foot**

Commute Mode Share



Source: Census of Population (2006 & 2016), NHS Profile (2011)

Meaford Has Diverse Needs

Urban and Rural Contexts

55% of residents live in Meaford's **rural areas and hamlets**. Rural residents and businesses face different transportation needs.

- Rural businesses and residents rely on the transportation network to move goods and equipment, face longer travel distances and a mix of paved and unpaved roads.
- Urban businesses and residents face increased traffic volumes and parking demand, different safety and operational issues and rely on active transportation more.

Aging Population

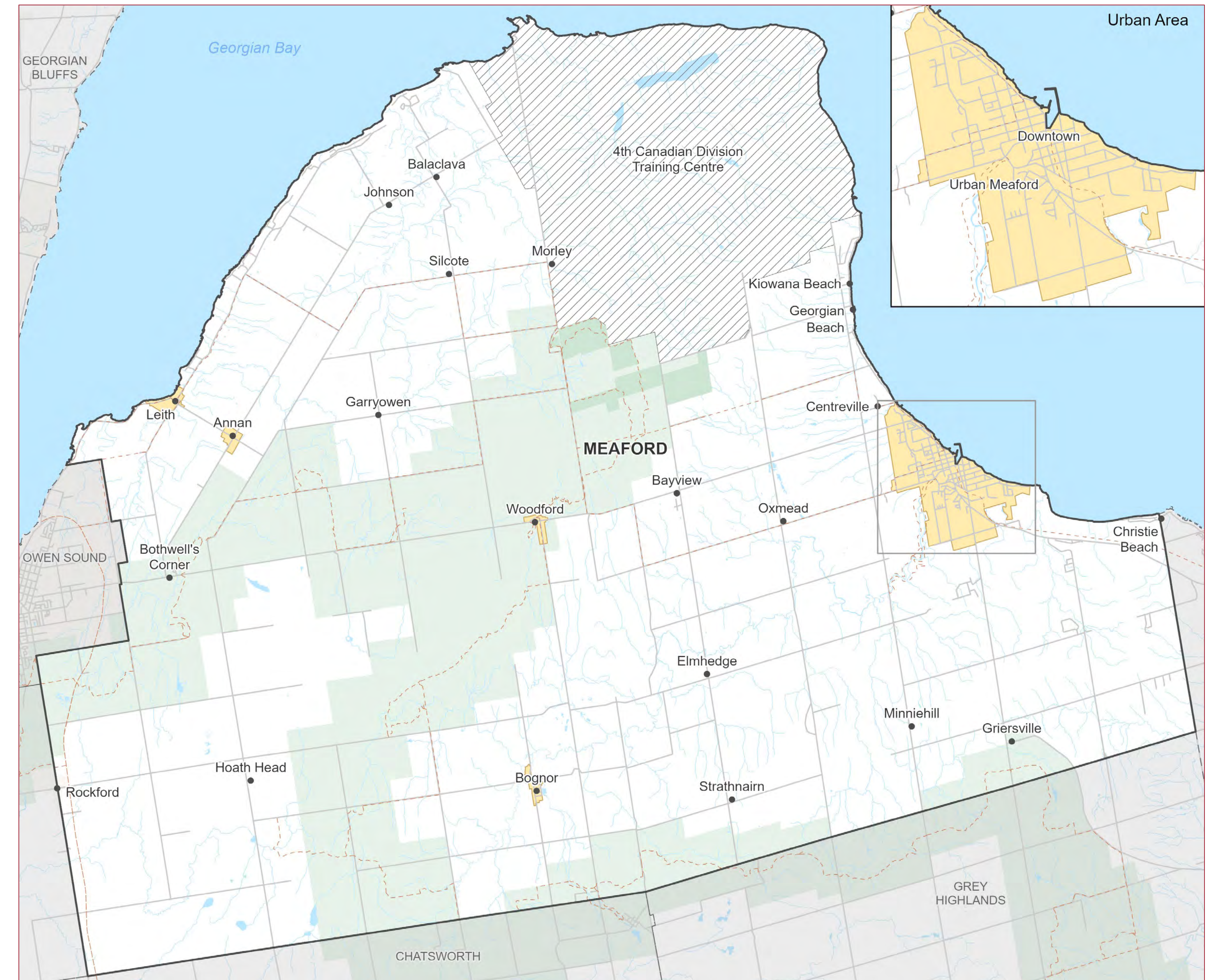
Meaford's **median age of 53 years** old in 2016 increased from 47 in 2006. The share of residents **60 years or older** grew from **27% to 37%** between 2006 and 2016.

- People are increasingly active in retirement and are making more trips for social, recreation and economic purposes.
- The share of young people (under 30) has declined from 31% to 26% between 2006 and 2016. Younger people are more likely to prefer active transportation and transit options.

Seasonal Population and Tourism

14% of dwelling units are not occupied by a permanent resident, illustrating Meaford's **seasonal population**.

- The transportation system needs to be able to handle increased demand during peak cottage and tourism seasons.



Help Shape the TMP!

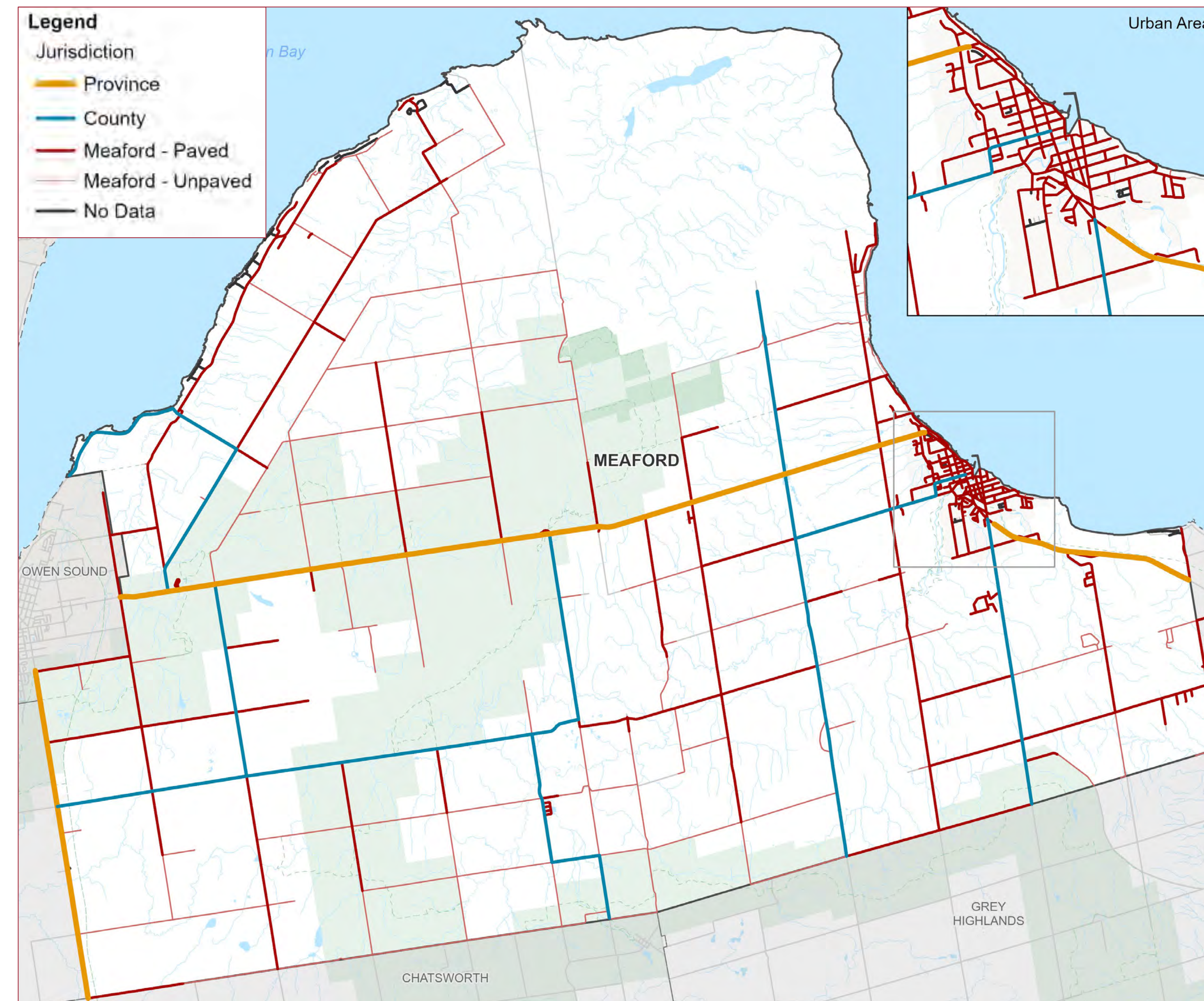
How can the transportation system better meet your needs?
Take the survey at [Meaford.ca/TMP](https://meaford.ca/TMP)

Road Network

Municipal roads provide local connections to individual properties (shown in red).

County roads form the arterial road network and provide key connections into the rest of Grey County (shown in blue).

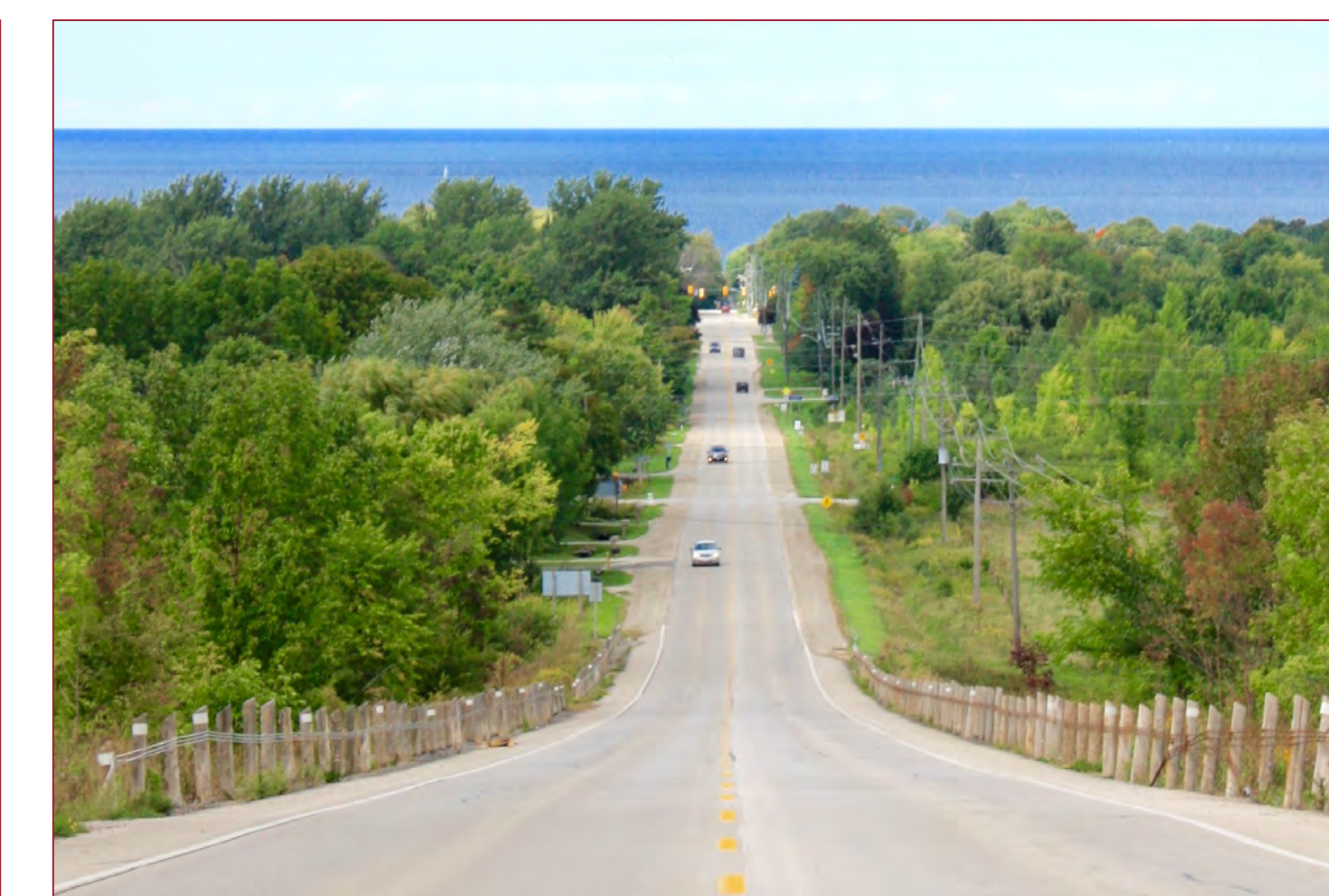
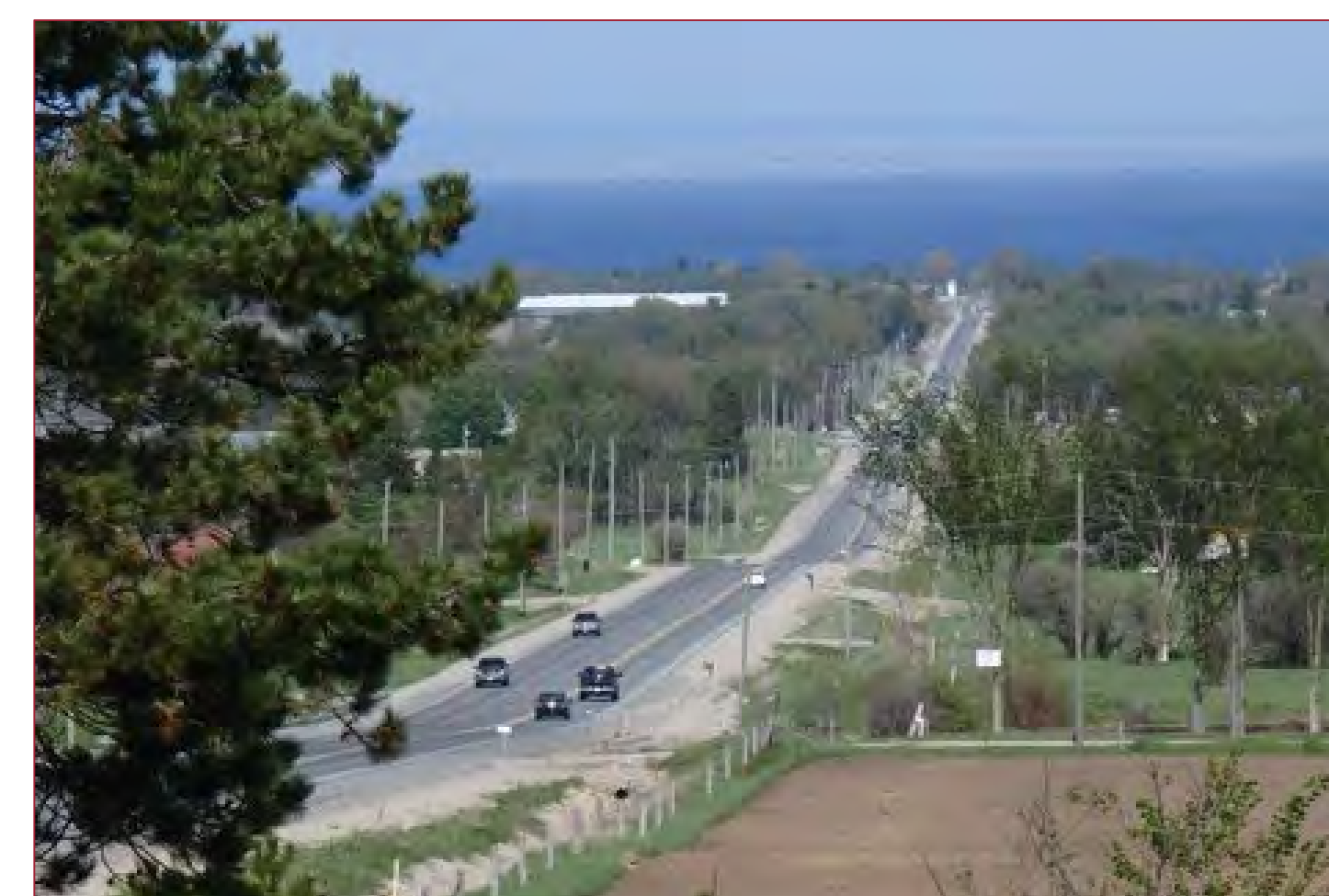
Two **provincial highways** provide the main regional connections to neighbouring municipalities – Highway 26 and Highway 6 & 10 (shown in orange).



The TMP focuses on **municipal infrastructure**, but can influence policy and infrastructure decisions at higher levels.

How can the road network better **meet the needs of the agricultural industry?**

How can rural roads better accommodate **walking and cycling?**



Help Shape the TMP!

Take the survey at
[Meaford.ca/TMP](https://meaford.ca/TMP)

Maintenance and Rehabilitation

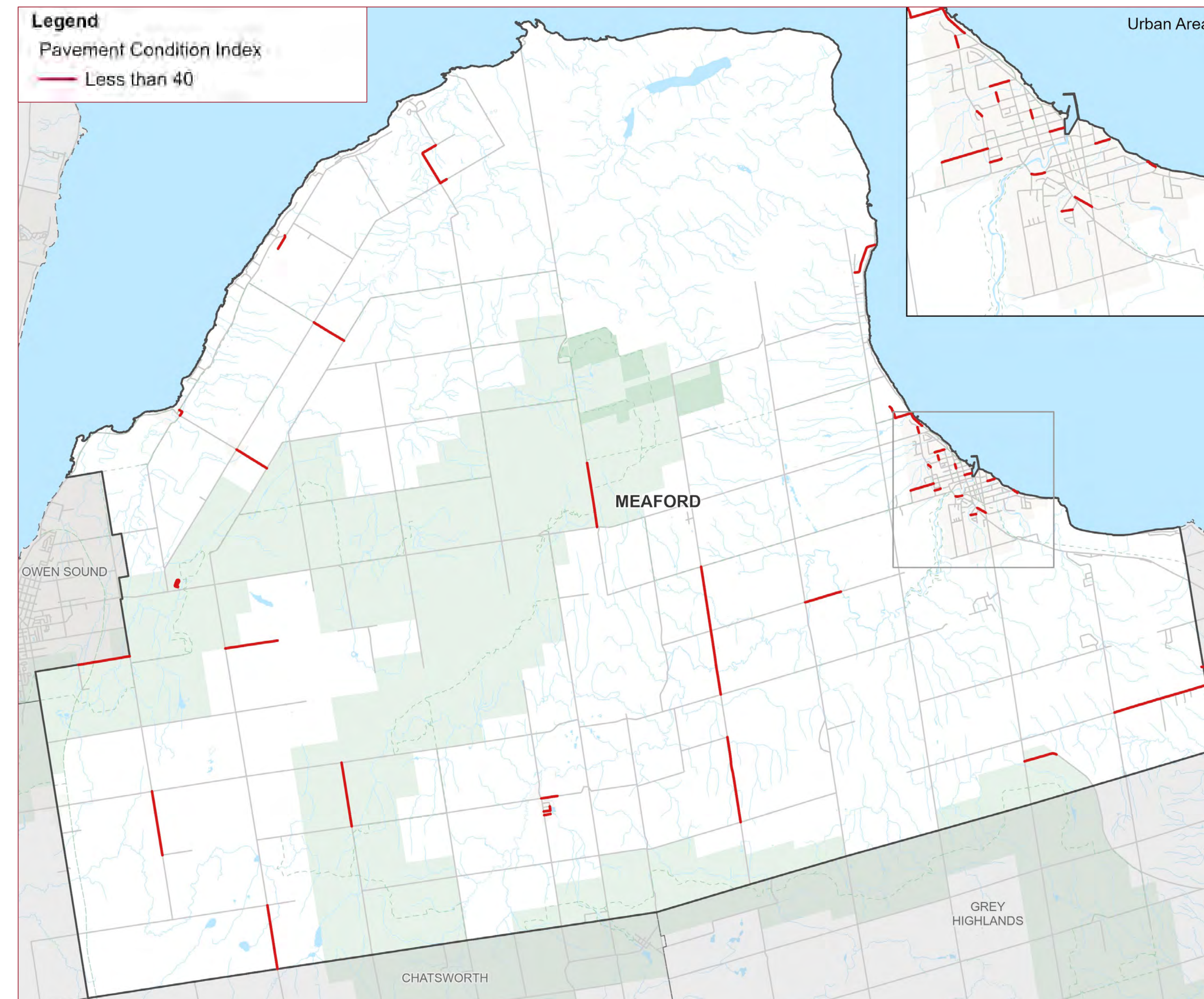
Meaford has a number of roads in poor condition and bridges that require rehabilitation or replacement.

Meaford's road network is comprised of **210 km of paved roads.**

Meaford's road network is comprised of **187 km of unpaved roads.**

Some bridges are reaching the **end of their lifespan** and will require rehabilitation or replacement to avoid closure.

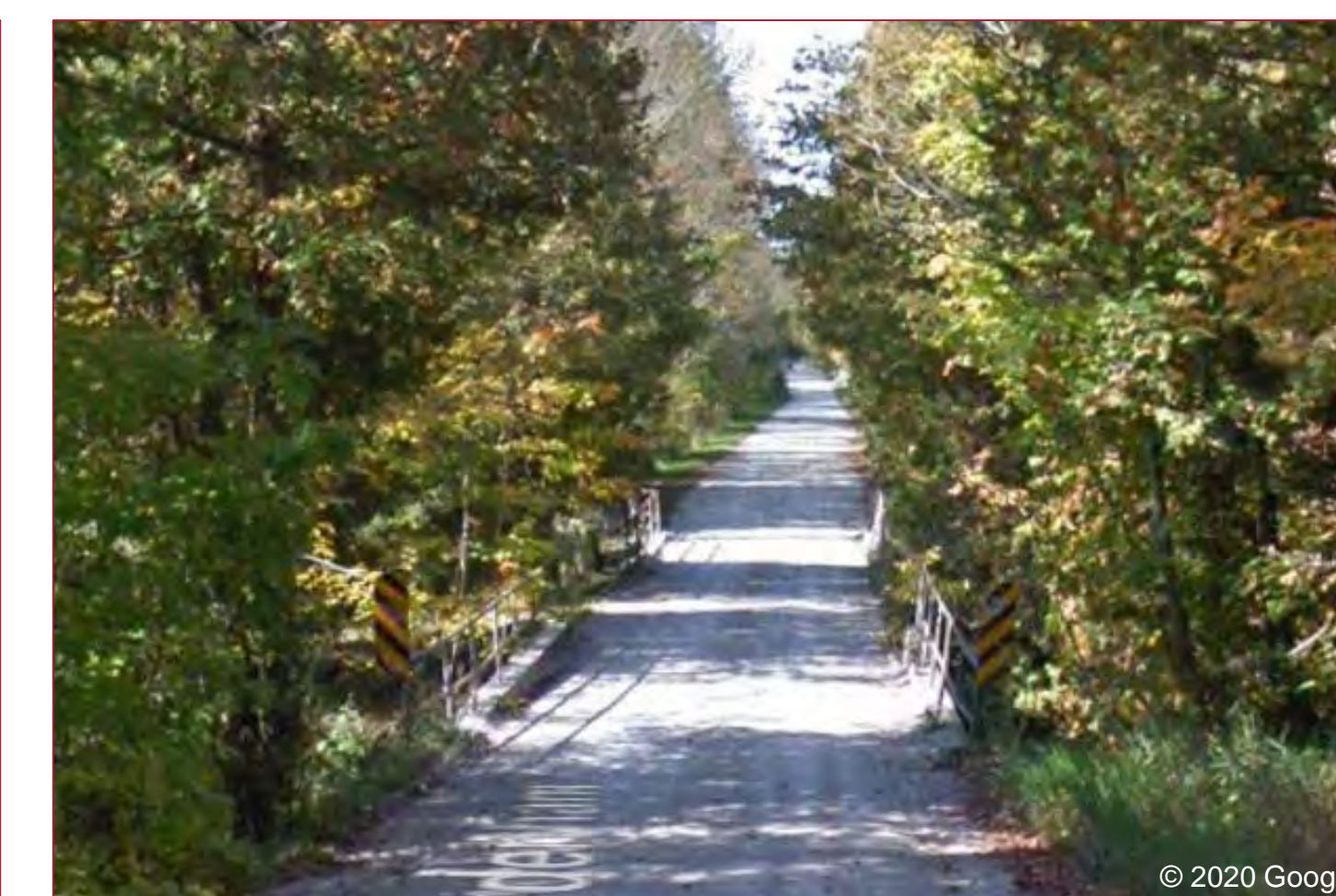
Council has indicated that all bridges will remain open, however funding is an ongoing challenge.



Road conditions are reflected in the **pavement condition index (PCI)** measure.

A PCI score **below 40** is considered “very poor” or “serious” meaning these roads are the most in need of being repaired.

What roads do you think Meaford **should prioritize for rehabilitation or upgrading?**



Help Shape the TMP!

Provide your comments on road and bridge conditions and maintenance. Take the survey at [Meaford.ca/TMP](https://meaford.ca/TMP)

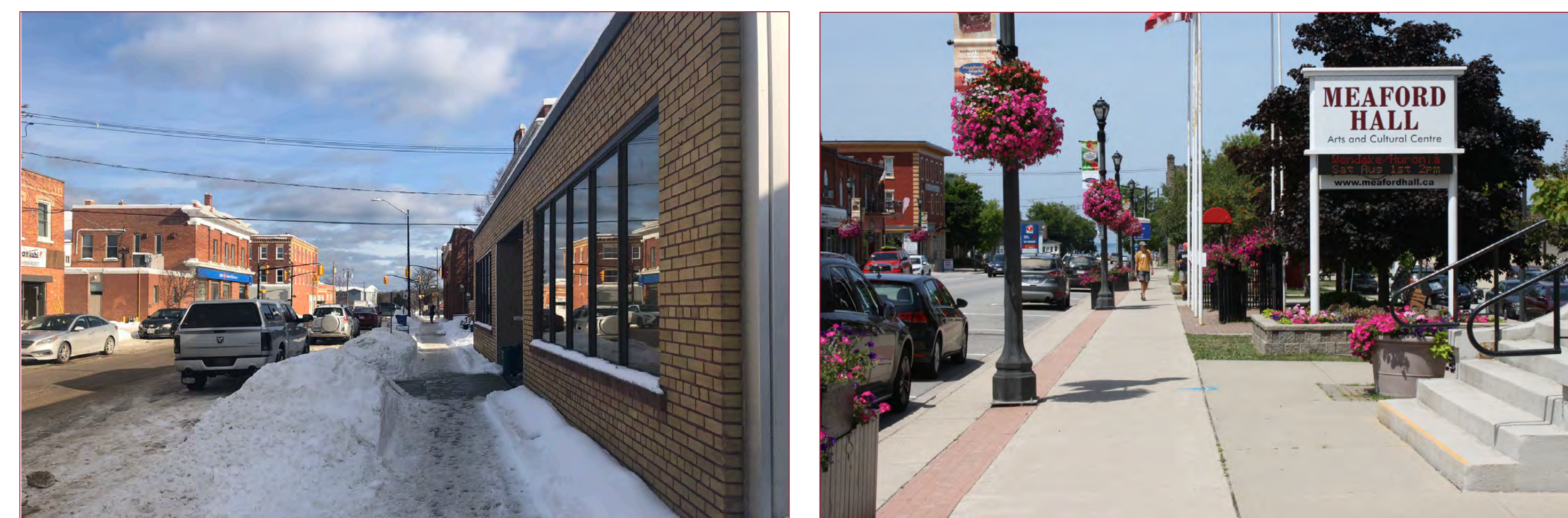
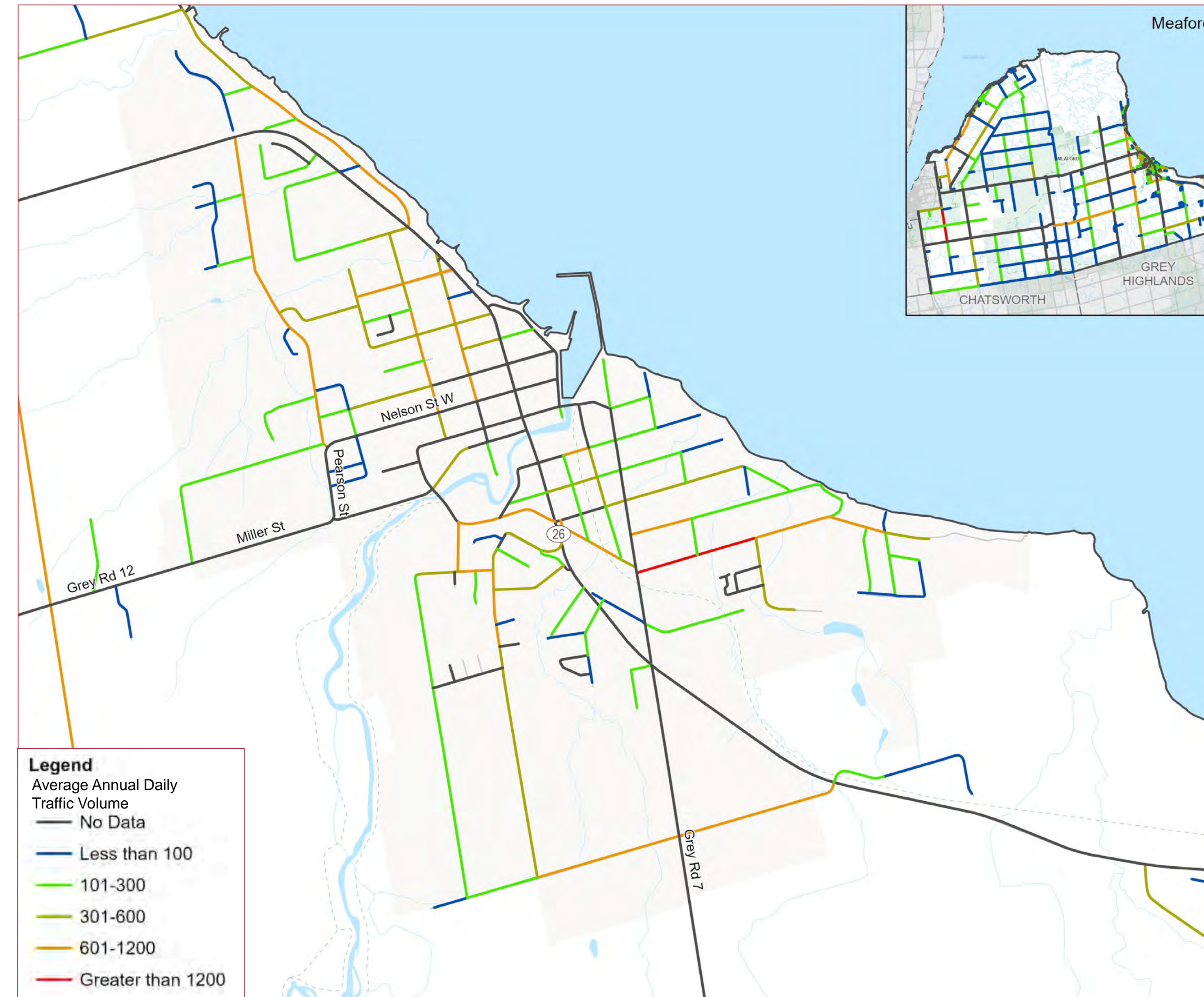
Traffic

Highway 26 is the busiest street in the Municipality – catering to long-distance regional travel and forms the urban area’s traditional main street.

Most roadways in the municipality have **fewer than 600 vehicles per day** (well below capacity).

Localized **traffic congestion** or **operational issues** persist, typically at intersections in the urban core.

Existing infrastructure needs to be optimized, including determining if **one-way streets** may be better in certain locations.



Intersections like **Sykes St and Ford Ave** present safety issues due to irregular alignment and poor sightlines.

Certain streets in the urban area have been identified as having **speeding issues**. Where should traffic calming measures be prioritized?

Parking demand is increasing in the urban core. Do you have trouble finding parking near your favorite destinations?

Does the **accessible parking** supply meet your needs?

Help Shape the TMP!

Take the survey at
Meaford.ca/TMP

Sustainable Transportation

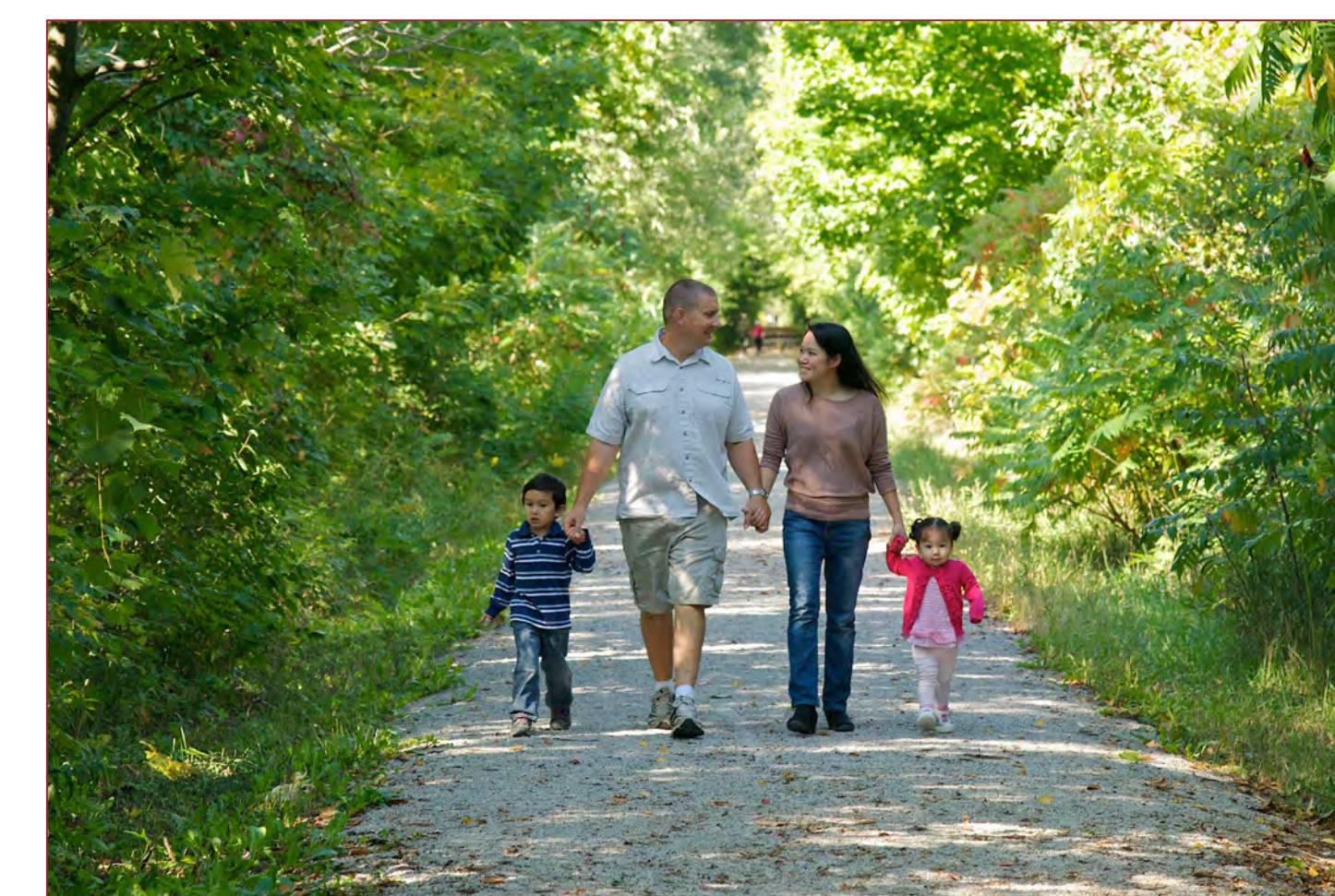
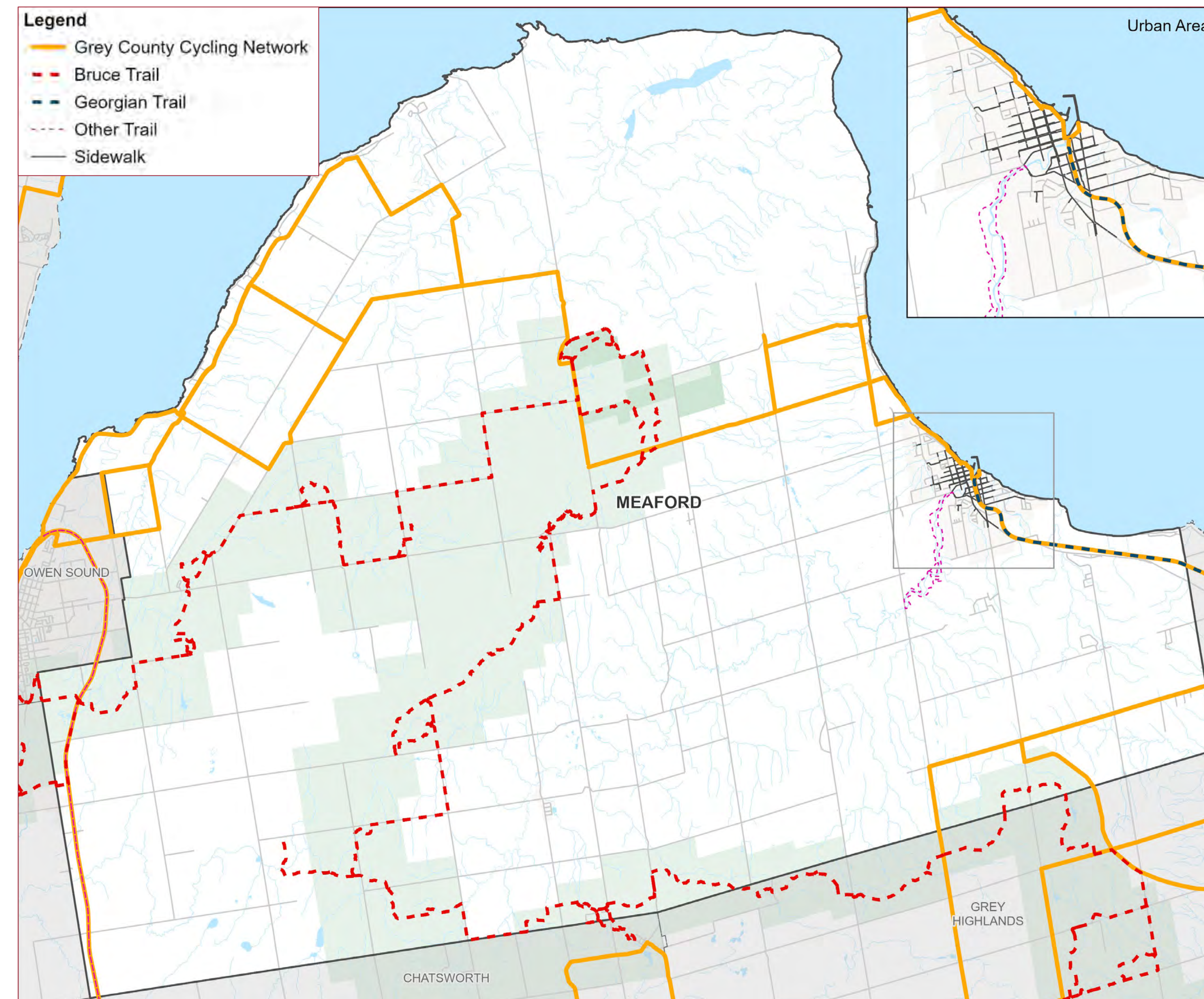
There are **gaps in the sidewalk network** and roads without sidewalks in urban Meaford.

Several important **recreational trails** are located within Meaford including the Bruce Trail, the Georgian Trail and the Tom Thomson Trail.

The **Draft Grey County Cycling and Trails Master Plan** recommends new paved shoulders and signed cycling routes through Meaford.

Meaford needs to support regional **transit and paratransit** service.

New technologies such as ride-sharing apps, and in the future, self-driving cars are changing the way people travel.



Current policy requires sidewalks on only one side of most urban streets – **should sidewalks be provided on both sides?**

Where should **sidewalk gaps** be prioritized? Where are **new sidewalks** needed?

What actions could support and **encourage more cycling** in Meaford?

Help Shape the TMP!

Take the survey at [Meaford.ca/TMP](https://meaford.ca/TMP)

Draft Vision, Goals and Directions

Draft Vision

The Municipality of Meaford strives to provide a sustainable and economical multi-modal transportation system, where people, goods and agricultural equipment are moved efficiently, and people of all ages and abilities can travel safely by vehicle, walking and cycling.

Draft Goals and Directions

Goal #1: Meet the needs of present and future urban and rural residents and businesses.

- Develop a multi-modal transportation network that enables efficient regional travel and sustainable travel choices.
- Enable the efficient movement of goods and agricultural equipment.
- Support economic development and tourism.
- Increase access to opportunity for residents and businesses.

Goal #2: Be delivered and maintained in a fiscally responsible and sustainable manner.

- Investigate alternative construction methods for roads and bridges.
- Improve operations and maintenance policies and procedures and consider life-cycle costs in all infrastructure decisions.
- Become more resilient to impacts from climate change.
- Embrace sustainable transportation practices and the emerging shared economy.



Do you agree with the **TMP's draft vision?**



How important are each of these **goals and directions** to you?



Help Shape the TMP!

Take the survey at **Meaford.ca/TMP**

Draft Vision, Goals and Directions

Draft Vision

The Municipality of Meaford strives to provide a sustainable and economical multi-modal transportation system, where people, goods and agricultural equipment are moved efficiently, and people of all ages and abilities can travel safely by vehicle, walking and cycling.

Draft Goals and Directions

 **Goal #3: Enhance safety, accessibility, equity and inclusivity and to support active, healthy & livable communities.**

- Improve traffic safety for all road users.
- Enable active transportation as an everyday option for residents of all ages and abilities.
- Enhance connections to recreational trails and facilities.
- Support the regional public transit and specialized transit plans

 **Goal #4: Support environmental sustainability and climate change objectives.**

- Reduce the reliance on single-occupancy vehicles.
- Transition to a more integrated multi-modal transportation system.
- Contribute to a reduction in greenhouse gas emissions.
- Protect Meaford's natural and cultural heritage.



Do you agree with the **TMP's draft vision?**



How important are each of these **goals and directions** to you?



Help Shape the TMP!

Take the survey at
[Meaford.ca/TMP](https://meaford.ca/TMP)

Next Steps

After this event, we will...



Stay Connected!

Visit www.meaford.ca/TMP for updates and to provide your input on the vision, goals and directions of the study, and help us identify the important transportation issues that this study needs to address.

Contact the Project Team:

Tori Perejmybida, P.Eng.
Project Manager
Municipality of Meaford
21 Trowbridge Street West
Meaford, ON N4L 1A1
519-538-1060 ext. 1132
tperejmybida@meaford.ca

Scott Johnston, P.Eng.
Consultant Project Manager
IBI Group
55 St. Clair Avenue West
Toronto, ON M4V 2Y7
416-596-1930 ext. 65503
sjohnston@ibigroup.com



Take the Survey!

Help shape the TMP by taking the public opinion survey. We want your input on the draft vision and goals and want to hear from you about what issues, problems or opportunities the TMP needs to address.

Take the survey online at www.meaford.ca/TMP or call **519-538-1060 ext. 1302** to take the survey by phone.