

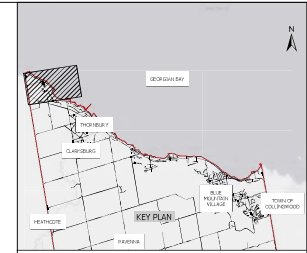


Enhancing our communities

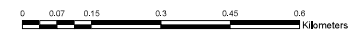


# Minor Drainage System Deficiency Maps

TOWN OF THE BLUE MOUNTAINS



- LEGEND**
- STORM MAINTENANCE HOLE
  - STORM MAINTENANCE HOLE SURCHARGE
  - STORM SEWER
  - DEFICIENT STORM SEWER
  - CULVERT/BRIDGE
  - DITCH/SWALE/OVERLAND FLOW ROUTE
  - WATERCOURSE
  - SWM FACILITY
  - SWM FACILITY OUTLET
  - SWM FACILITY ID
  - △ OUTFALL
  - SETTLEMENT AREA BOUNDARY
  - ROAD



**DISCLAIMER AND COPYRIGHT**  
THE INFORMATION CONTAINED IN THIS DRAWING IS SOLELY FOR THE USE OF THE TOWN OF THE BLUE MOUNTAINS FOR THE PURPOSE FOR WHICH IT HAS BEEN PREPARED AND TATHAM ENGINEERING LTD. UNDERTAKES NO DUTY OR ASSUMES ANY RESPONSIBILITY TO ANY THIRD PARTY WHO MAY RELY UPON THIS DRAWING.  
THIS DRAWING MAY NOT BE USED FOR ANY PURPOSE OTHER THAN THAT PROVIDED IN THE CONTRACT BETWEEN THE TOWN OF THE BLUE MOUNTAINS AND TATHAM ENGINEERING LTD. NOR MAY ANY DETAIL OR ELEMENT OF THIS DRAWING BE REPRODUCED, REPRODUCED ELECTRONICALLY STORED OR TRANSMITTED IN ANY FORM WITHOUT THE EXPRESS WRITTEN CONSENT OF THE TOWN OF THE BLUE MOUNTAINS.

**NOTE**  
THE 15-YEAR 3 HR CHICAGO 8 HR SCS, 12 HR SCS AND 24 HR SCS DESIGN STORM DISTRIBUTIONS WERE APPLIED TO MTD TOP CURVE DATA AND ALONG WITH THE 15-YEAR SPURF STORM ASSESSED AS THE TOWN STANDARD TO ESTIMATE DEFICIENCIES IN THE MINOR DRAINAGE SYSTEM. THE WORST CASE (WHEAT) PEAK FLOW, GENERATED BY THE VARIOUS DESIGN STORMS HAS BEEN USED TO IDENTIFY DEFICIENCIES.

No.	REVISION DESCRIPTION	DATE	ENGINEER'S STAMP

**TOWN OF THE BLUE MOUNTAINS  
DRAINAGE MASTER PLAN**

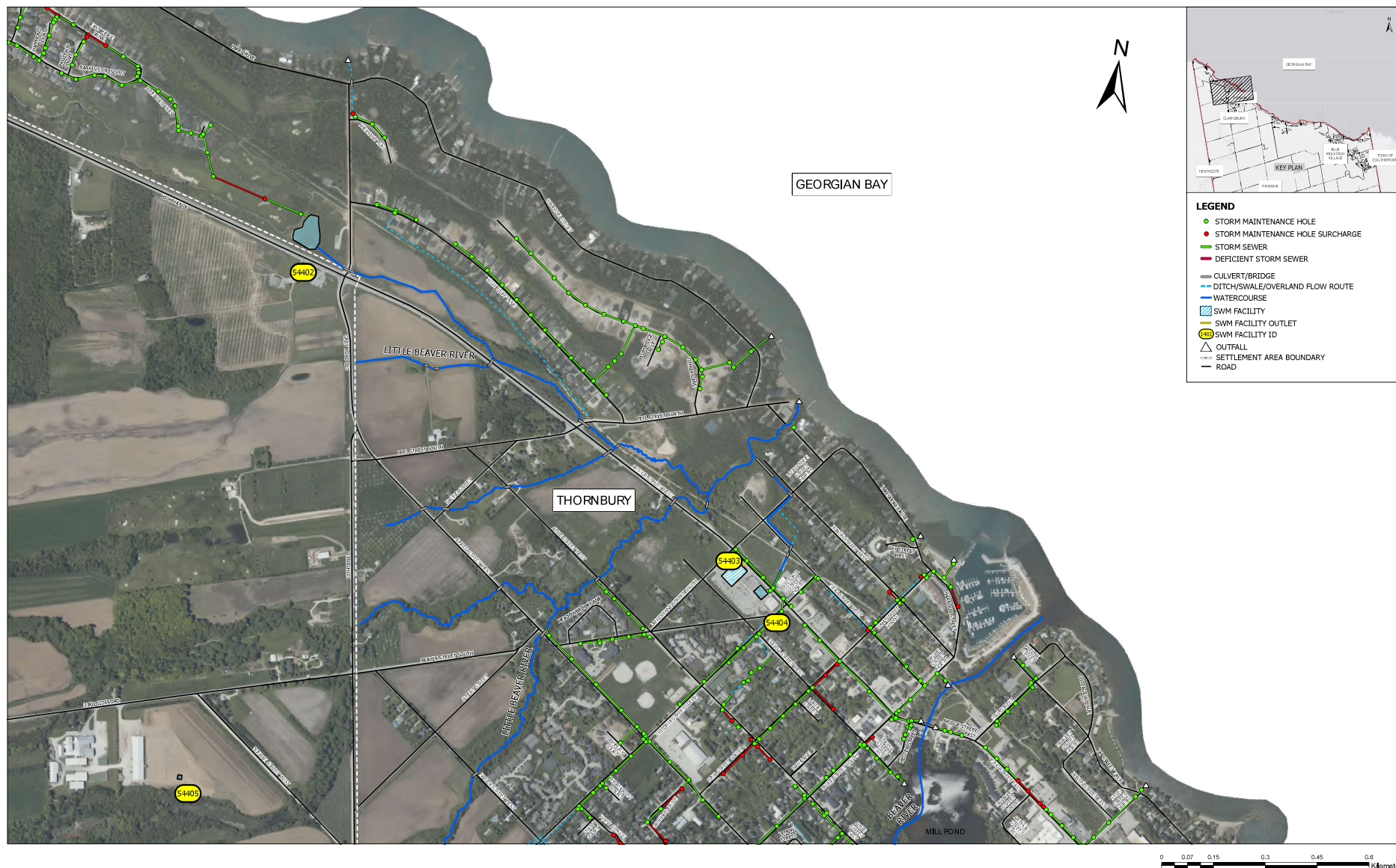
MINOR DRAINAGE  
SYSTEM DEFICIENCY MAP  
(EXISTING CONDITION)

DESIGN: DAM  
DRAWN: BMS  
CHECK: DRT

FILE: 121019  
DATE: OCT 2021  
SCALE: 1:5000

DWG:  
**P-1A**





**KEY PLAN**

**LEGEND**

- STORM MAINTENANCE HOLE
- STORM MAINTENANCE HOLE SURCHARGE
- STORM SEWER
- DEFICIENT STORM SEWER
- CULVERT/BRIDGE
- DITCH/SWALE/OVERLAND FLOW ROUTE
- WATERCOURSE
- SWM FACILITY
- SWM FACILITY OUTLET
- SWM FACILITY ID
- △ OUTFALL
- SETTLEMENT AREA BOUNDARY
- ROAD

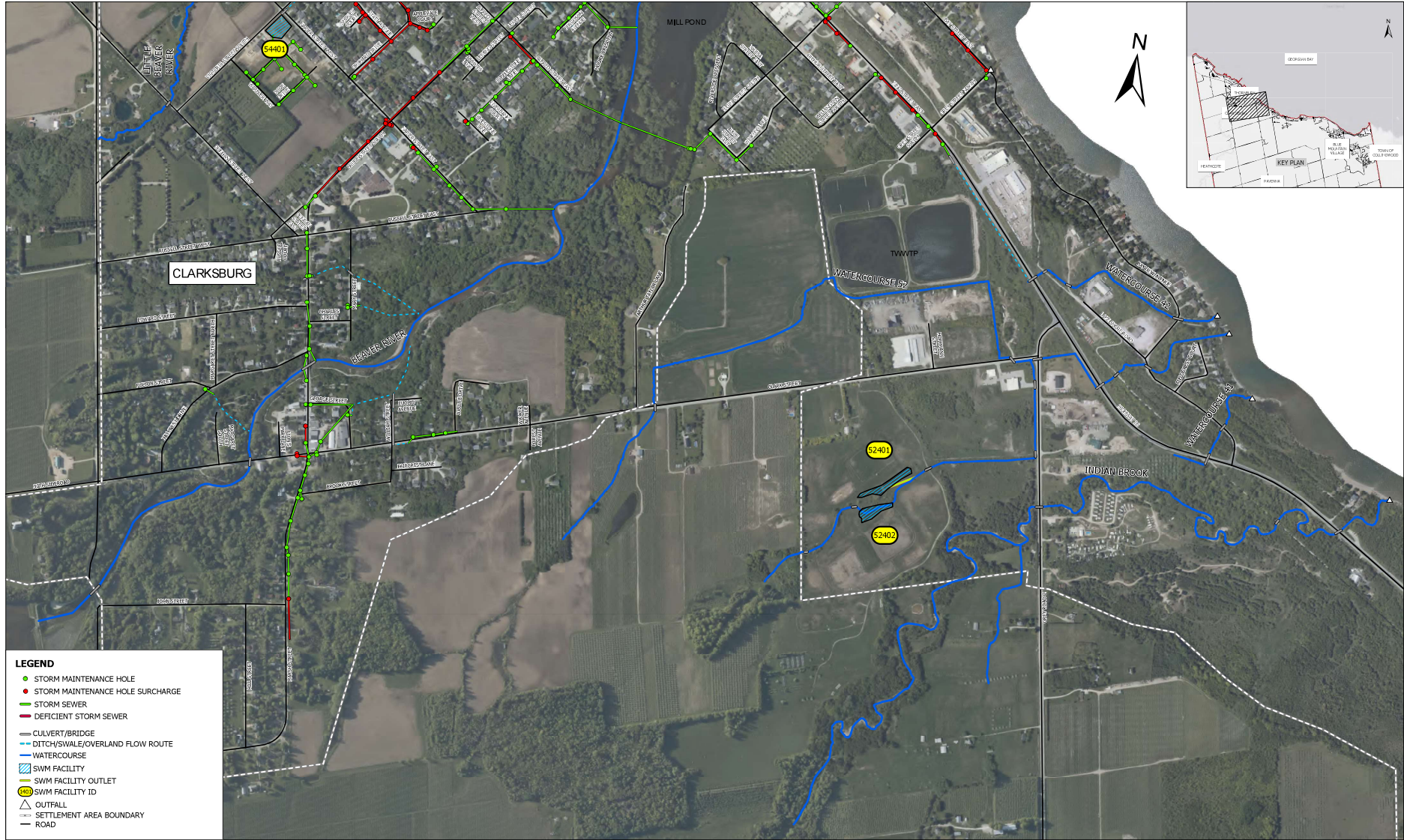
**DISCLAIMER AND COPYRIGHT**  
THE INFORMATION CONTAINED IN THIS DRAWING IS SOLELY FOR THE USE OF THE TOWN OF THE BLUE MOUNTAINS FOR THE PURPOSE FOR WHICH IT HAS BEEN PREPARED AND TATHAM ENGINEERING LTD. UNDERTAKES NO DUTY OR ASSUMES ANY RESPONSIBILITY TO ANY THIRD PARTY WHO MAY RELY UPON THIS DRAWING.  
THIS DRAWING MAY NOT BE USED FOR ANY PURPOSE OTHER THAN THAT PROVIDED IN THE CONTRACT BETWEEN THE TOWN OF THE BLUE MOUNTAINS AND TATHAM ENGINEERING LTD. NOR MAY ANY DETAIL OR ELEMENT OF THIS DRAWING BE REPRODUCED, REPRODUCED ELECTRONICALLY STORED OR TRANSMITTED IN ANY FORM WITHOUT THE EXPRESS WRITTEN CONSENT OF THE TOWN OF THE BLUE MOUNTAINS.

**NOTE**  
THIS 15-YEAR 3 HR CHICAGO 8 HR SCS 12 HR SCS AND 24 HR SCS DESIGN STORM DISTRIBUTIONS WERE APPLIED TO MTD TOP CURVE DATA AND ALONG WITH THE 15-YEAR SPURF STORM ASSESSED AS THE TOWN'S STANDARD TO BE USED BY ENGINEERS IN THE MINOR DRAINAGE SYSTEM. THE WORST CASE (WHEAT) PEAK FLOW GENERATED BY THE VARIOUS DESIGN STORMS HAS BEEN USED TO IDENTIFY DEFICIENCIES.

No.	REVISION DESCRIPTION	DATE	ENGINEER'S STAMP

<b>TOWN OF THE BLUE MOUNTAINS DRAINAGE MASTER PLAN</b>			
MINOR DRAINAGE SYSTEM DEFICIENCY MAP (EXISTING CONDITION)		DESIGN: CAM DRAWN: KKS CHECK: DRT	FILE: 121076 DATE: OCT 2021 SCALE: 1:5000
		DWG: <b>P-1B</b>	





0 0.07 0.15 0.3 0.45 0.6 Kilometers

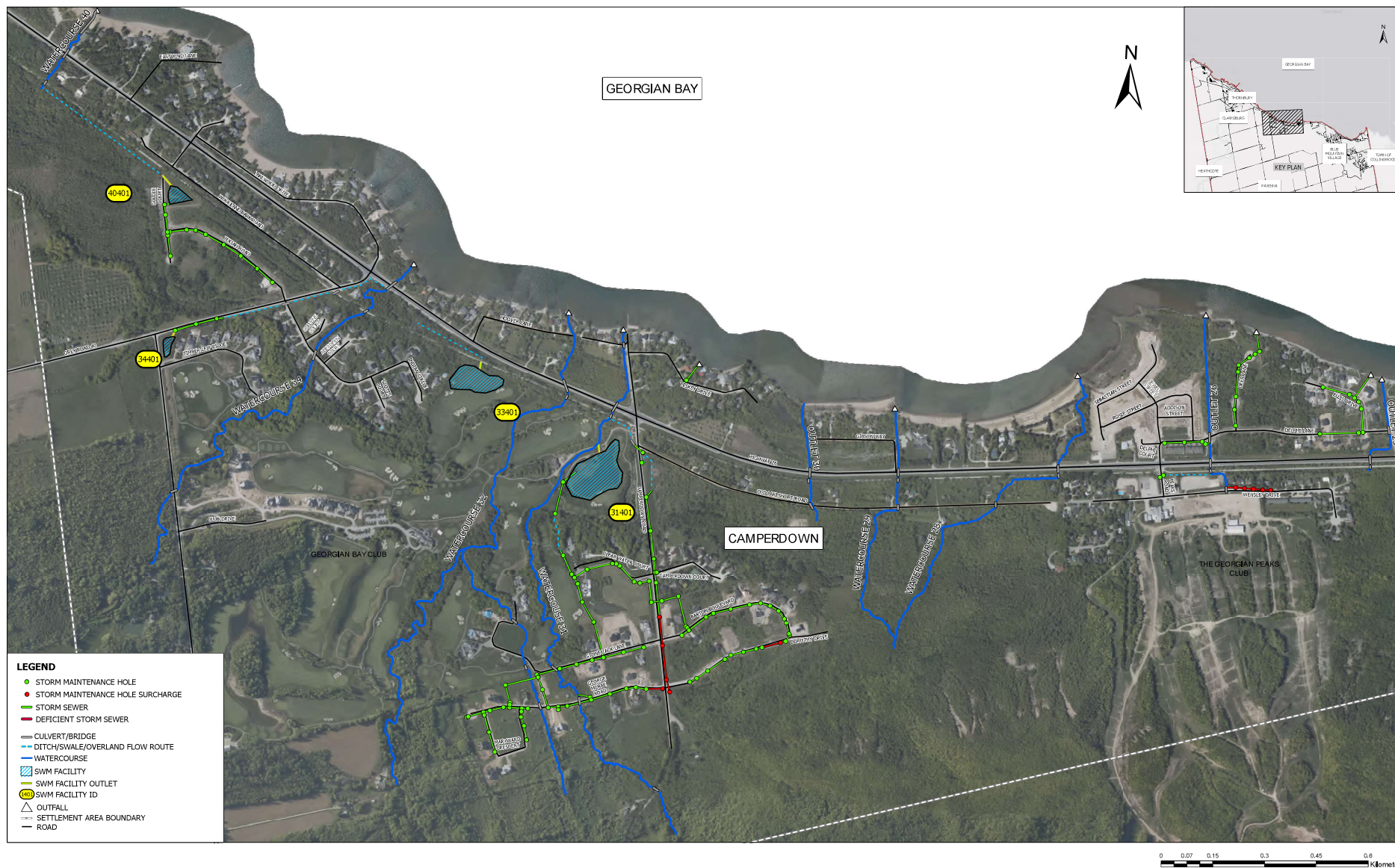
**DISCLAIMER AND COPYRIGHT**  
THE INFORMATION CONTAINED IN THIS DRAWING IS SOLELY FOR THE USE OF THE TOWN OF THE BLUE MOUNTAINS FOR THE PURPOSES FOR WHICH IT HAS BEEN PREPARED AND TATHAM ENGINEERING LTD. UNDERTAKES NO DUTY OR ASSUMES ANY RESPONSIBILITY TO ANY THIRD PARTY OR ANY RELY UPON THE DRAWING.  
  
THIS DRAWING MAY NOT BE USED FOR ANY PURPOSE OTHER THAN THAT PROVIDED IN THE CONTRACT BETWEEN THE TOWN OF THE BLUE MOUNTAINS AND TATHAM ENGINEERING LTD. NOR MAY ANY DETAIL OR ELEMENT OF THIS DRAWING BE REPRODUCED, REPRODUCED ELECTRONICALLY STORED OR TRANSMITTED IN ANY FORM WITHOUT THE EXPRESS WRITTEN CONSENT OF THE TOWN OF THE BLUE MOUNTAINS.

**NOTE**  
THIS 15-YEAR 3 HR CHICAGO 8 HR SCS 12 HR SCS AND 24 HR SCS DESIGN STORM DISTRIBUTIONS WERE APPLIED TO MTD TOP CURVE DATA AND ALONG WITH THE 15-YEAR SPURF STORM ASSESSED AS THE TOWN STANDARD TO IDENTIFY DEFICIENCIES IN THE MINOR DRAINAGE SYSTEM. THE WORST CASE (WHEAT) PEAK FLOW GENERATED BY THE VARIOUS DESIGN STORMS HAS BEEN USED TO IDENTIFY DEFICIENCIES.

No.	REVISION DESCRIPTION	DATE	ENGINEER'S STAMP

<b>TOWN OF THE BLUE MOUNTAINS DRAINAGE MASTER PLAN</b>			
MINOR DRAINAGE SYSTEM DEFICIENCY MAP (EXISTING CONDITION)		DESIGN: CAM DRAWN: KKS CHECK: DBT	FILE: 121076 DATE: OCT 2021 SCALE: 1:5000
		DWG:	<b>P-1C</b>





**DISCLAIMER AND COPYRIGHT**  
THE INFORMATION CONTAINED IN THIS DRAWING IS SOLELY FOR THE USE OF THE TOWN OF THE BLUE MOUNTAINS FOR THE PURPOSES AND SCOPE OF THE PROJECT. TATHAM ENGINEERING LTD. UNDERTAKES NO OBLIGATION TO MAINTAIN OR UPDATE THIS DRAWING OR TO ACCEPT ANY RESPONSIBILITY TO ANY THIRD PARTY WHO MAY RELY UPON THIS DRAWING.  
THIS DRAWING MAY NOT BE USED FOR ANY PURPOSE OTHER THAN THAT PROVIDED IN THE CONTRACT BETWEEN THE TOWN OF THE BLUE MOUNTAINS AND TATHAM ENGINEERING LTD. NOR MAY ANY DETAIL OR ELEMENT OF THIS DRAWING BE REPRODUCED, REPRODUCED ELECTRONICALLY STORED OR TRANSMITTED IN ANY FORM WITHOUT THE EXPRESS WRITTEN CONSENT OF THE TOWN OF THE BLUE MOUNTAINS.

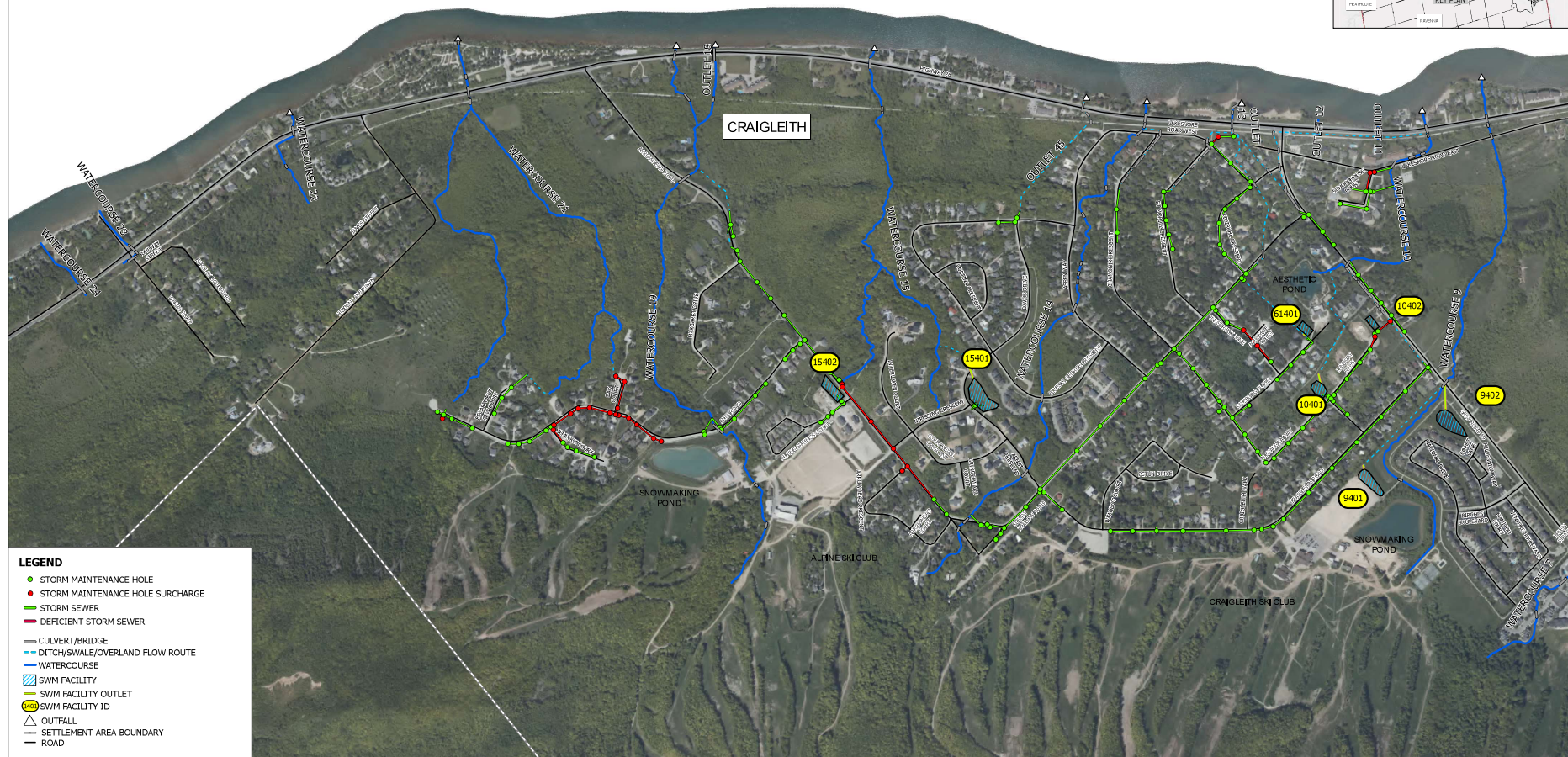
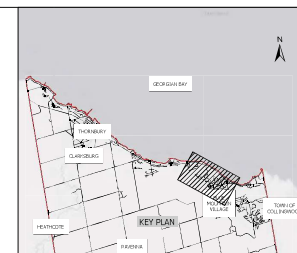
**NOTE**  
THIS 15-YEAR 3 HR CHICAGO 8 HR SCS 12 HR SCS AND 24 HR SCS DESIGN STORM DISTRIBUTIONS WERE APPLIED TO MTD TOP CURVE DATA AND ALONG WITH THE 15-YEAR SPURF STORM ASSESSED AS ONE TOWN STANDARD TO ESTIMATE DEFICIENCIES IN THE MINOR DRAINAGE SYSTEM. THE WORST CASE (HIGHEST) PEAK FLOW, DETERMINED BY THE VARIOUS DESIGN STORMS HAS BEEN USED TO IDENTIFY DEFICIENCIES.

No.	REVISION DESCRIPTION	DATE	ENGINEER'S STAMP

TOWN OF THE BLUE MOUNTAINS DRAINAGE MASTER PLAN			TATHAM ENGINEERING	
MINOR DRAINAGE SYSTEM DEFICIENCY MAP (EXISTING CONDITION)			DESIGN: CAM	FILE: 121076
			DRAWN: KKS	DATE: OCT 2021
			CHECK: DBT	SCALE: 1:5000
			DWG:	P-1D



GEORGIAN BAY



- LEGEND**
- STORM MAINTENANCE HOLE
  - STORM MAINTENANCE HOLE SURCHARGE
  - STORM SEWER
  - DEFICIENT STORM SEWER
  - CULVERT/BRIDGE
  - DITCH/SWALE/OVERLAND FLOW ROUTE
  - WATERCOURSE
  - SWM FACILITY
  - SWM FACILITY OUTLET
  - SWM FACILITY ID
  - △ OUTFALL
  - SETTLEMENT AREA BOUNDARY
  - ROAD

**DISCLAIMER AND COPYRIGHT**  
THE INFORMATION CONTAINED IN THIS DRAWING IS SOLELY FOR THE USE OF THE TOWN OF THE BLUE MOUNTAINS FOR THE PURPOSE FOR WHICH IT HAS BEEN PREPARED AND TATHAM ENGINEERING LTD. UNDERTAKES NO DUTY OR ASSUMES ANY RESPONSIBILITY TO ANY THIRD PARTY WHO MAY RELY UPON THIS DRAWING.  
THIS DRAWING MAY NOT BE USED FOR ANY PURPOSE OTHER THAN THAT PROVIDED IN THE CONTRACT BETWEEN THE TOWN OF THE BLUE MOUNTAINS AND TATHAM ENGINEERING LTD. NOR MAY ANY DETAIL OR ELEMENT OF THIS DRAWING BE REPRODUCED, REPRODUCED ELECTRONICALLY STORED OR TRANSMITTED IN ANY FORM WITHOUT THE EXPRESS WRITTEN CONSENT OF THE TOWN OF THE BLUE MOUNTAINS.

**NOTE**  
THIS 15-YEAR 3 HR CHICAGO 8 HR SCS, 12 HR SCS AND 24 HR SCS DESIGN STORM DISTRIBUTIONS WERE APPLIED TO MTD TOP CURVE DATA AND ALONG WITH THE 15-YEAR SPURC STORM ASSESSED AS THE TOWN STANDARD TO IDENTIFY DEFICIENCIES IN THE MINOR DRAINAGE SYSTEM. THE WORST CASE (HIGHEST) PEAK FLOW GENERATED BY THE VARIOUS DESIGN STORMS HAS BEEN USED TO IDENTIFY DEFICIENCIES.

No.	REVISION DESCRIPTION	DATE	ENGINEER'S STAMP

**TOWN OF THE BLUE MOUNTAINS  
DRAINAGE MASTER PLAN**

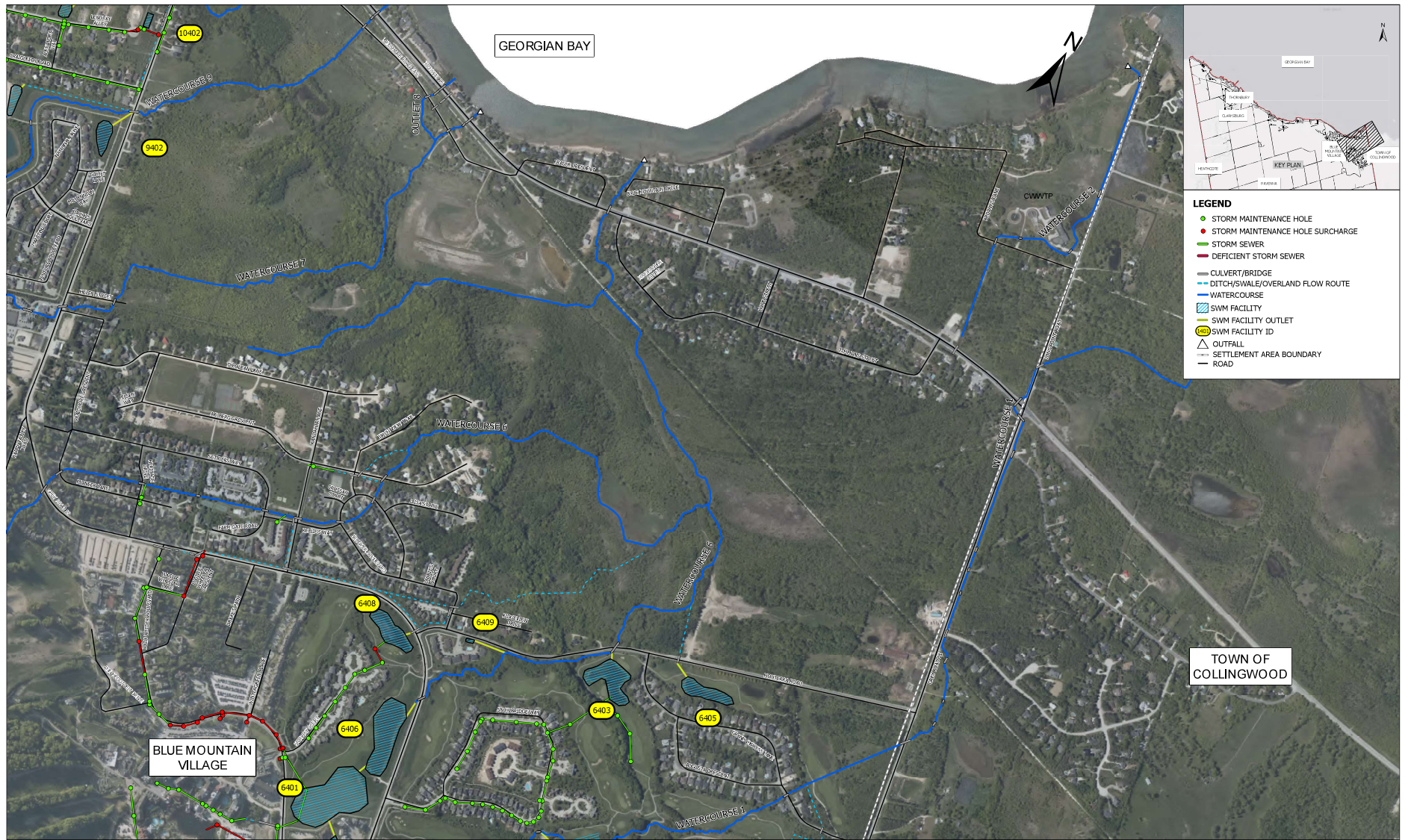
MINOR DRAINAGE  
SYSTEM DEFICIENCY MAP  
(EXISTING CONDITION)



DESIGN: CAM  
DRAWN: KKS  
CHECK: DRT  
FILE: 121076  
DATE: OCT 2021  
SCALE: 1:5500

DWG:  
**P-1E**





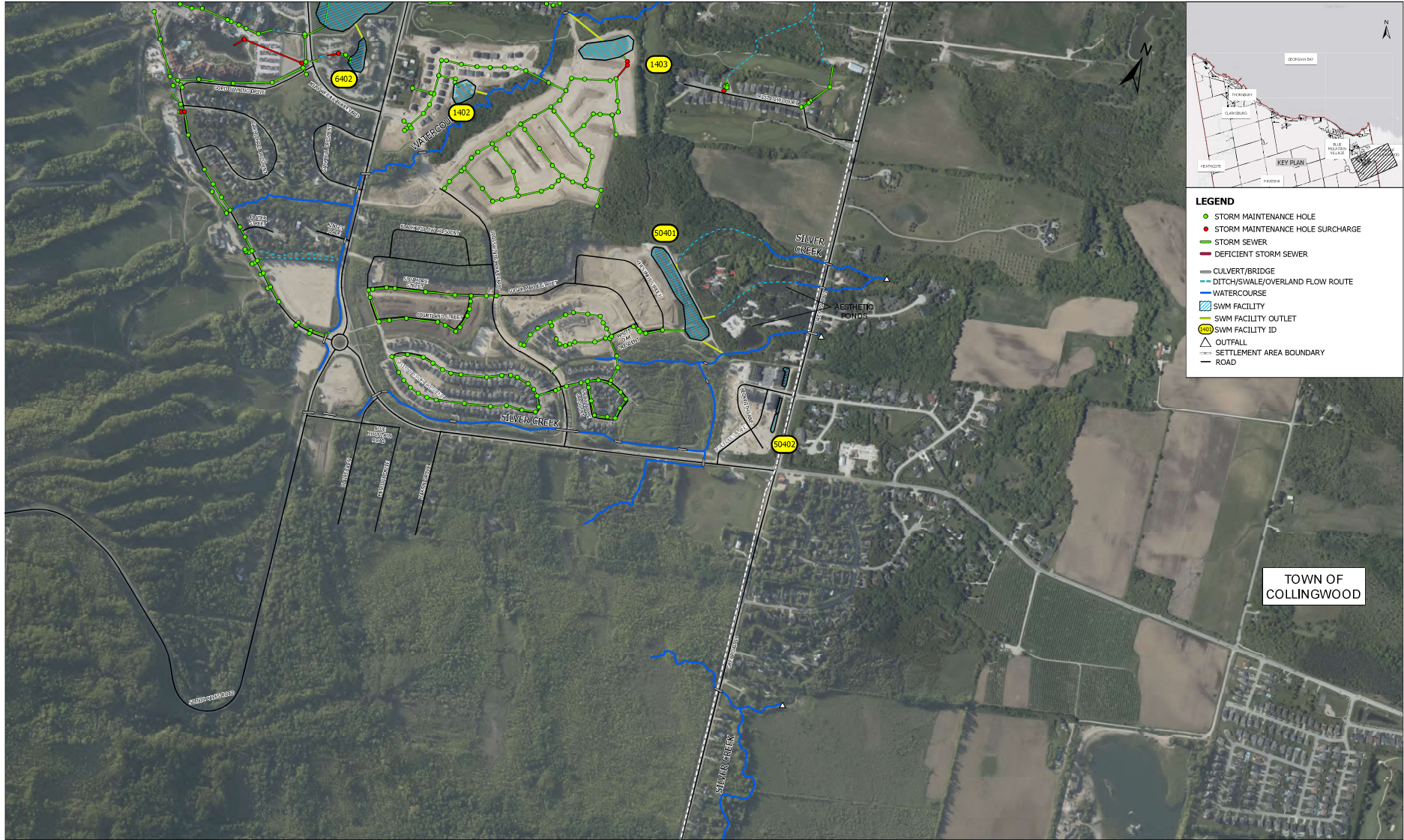
**DISCLAIMER AND COPYRIGHT**  
THE INFORMATION CONTAINED IN THIS DRAWING IS SOLELY FOR THE USE OF THE TOWN OF THE BLUE MOUNTAINS FOR THE PURPOSES FOR WHICH IT HAS BEEN PREPARED AND TATHAM ENGINEERING LTD. UNDERTAKES NO DUTY OR ASSUMES ANY RESPONSIBILITY TO ANY THIRD PARTY WHO MAY RELY UPON THIS DRAWING.  
THIS DRAWING MAY NOT BE USED FOR ANY PURPOSE OTHER THAN THAT PROVIDED IN THE CONTRACT BETWEEN THE TOWN OF THE BLUE MOUNTAINS AND TATHAM ENGINEERING LTD. NOR MAY ANY DETAIL OR ELEMENT OF THIS DRAWING BE REPRODUCED, REPRODUCED ELECTRONICALLY STORED OR TRANSMITTED IN ANY FORM WITHOUT THE EXPRESS WRITTEN CONSENT OF THE TOWN OF THE BLUE MOUNTAINS.

**NOTE**  
THE 15-YEAR 3 HR CHICAGO 8 HR SCS, 12 HR SCS AND 24 HR SCS DESIGN STORM DISTRIBUTIONS WERE APPLIED TO MTD TOP CURVE DATA AND ALONG WITH THE 15-YEAR SPPIC STORM ASSESSED AS THE TOWN STANDARD TO DETERMINE THE MINOR DRAINAGE SYSTEM. THE WORST CASE (HIGHEST) PEAK FLOW GENERATED BY THE VARIOUS DESIGN STORMS HAS BEEN USED TO IDENTIFY DEFICIENCIES.

No.	REVISION DESCRIPTION	DATE	ENGINEER'S STAMP

<b>TOWN OF THE BLUE MOUNTAINS DRAINAGE MASTER PLAN</b>		<b>TATHAM ENGINEERING</b>	
MINOR DRAINAGE SYSTEM DEFICIENCY MAP (EXISTING CONDITION)		DESIGN: CAM DRAWN: KKS CHECK: DBT	FILE: 121076 DATE: OCT 2021 SCALE: 1:5000
		DWG: <b>P-1F</b>	





**DISCLAIMER AND COPYRIGHT**  
THE INFORMATION CONTAINED IN THIS DRAWING IS SOLELY FOR THE USE OF THE TOWN OF THE BLUE MOUNTAINS FOR THE PURPOSE FOR WHICH IT HAS BEEN PREPARED AND TATHAM ENGINEERING LTD. UNDERTAKES NO DUTY OR ASSUMES ANY RESPONSIBILITY TO ANY THIRD PARTY WHO MAY RELY UPON THIS DRAWING.  
THIS DRAWING MAY NOT BE USED FOR ANY PURPOSE OTHER THAN THAT PROVIDED IN THE CONTRACT BETWEEN THE TOWN OF THE BLUE MOUNTAINS AND TATHAM ENGINEERING LTD. NOR MAY ANY DETAIL OR ELEMENT OF THIS DRAWING BE REPRODUCED, REPRODUCED ELECTRONICALLY STORED OR TRANSMITTED IN ANY FORM WITHOUT THE EXPRESS WRITTEN CONSENT OF THE TOWN OF THE BLUE MOUNTAINS.

**NOTE**  
THIS 15-YEAR 3 HR CHICAGO 8 HR SCS, 12 HR SCS AND 24 HR SCS DESIGN STORM DISTRIBUTIONS WERE APPLIED TO MTD TOP CURVE DATA AND ALONG WITH THE 15-YEAR SPURC STORM ASSESSED AS THE TOWN'S STANDARD TO BE USED BY REFERENCED IN THE MINOR DRAINAGE SYSTEM. THE WORST CASE (WHEAT) PEAK FLOW GENERATED BY THE VARIOUS DESIGN STORMS HAS BEEN USED TO IDENTIFY DEFICIENCIES.

No.	REVISION DESCRIPTION	DATE	ENGINEER'S STAMP

**TOWN OF THE BLUE MOUNTAINS  
DRAINAGE MASTER PLAN**

**MINOR DRAINAGE  
SYSTEM DEFICIENCY MAP  
(EXISTING CONDITION)**

DESIGN: CAM

FILE: 121076

DWG: P-1G

DRAWN: KKS

DATE: OCT 2021

CHECK: DBT

SCALE: 1:5000