



Date

APRIL 2023

Scale

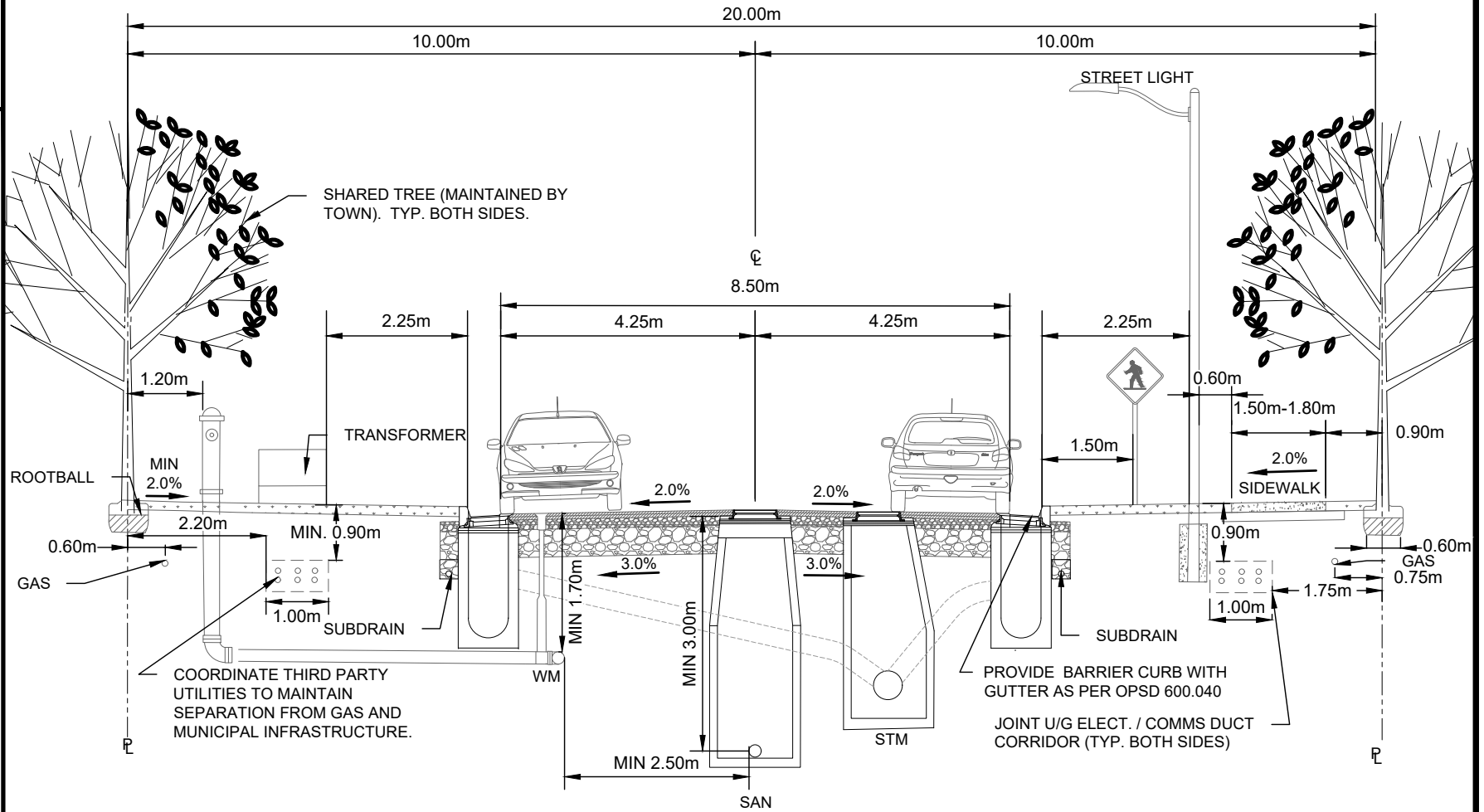
N.T.S.

TOTBM STD.

4.8.2.B

LOCAL URBAN ROAD 20m R.O.W - WITH PARKING CROSS-SECTION

Town of the Blue Mountains Standard Drawings



NOTES:

1. MINIMUM PAVEMENT STRUCTURE TO BE:

CLASSIFICATION	ASPHALT		GRANULAR	
	SURFACE	BASE	GRANULAR A	GRANULAR B
LOCAL RESIDENTIAL AND MINOR COLLECTOR	50mm HL3	50mm HL4 OR HL8	150mm	450mm
MAJOR COLLECTOR RESIDENTIAL	50mm HL3	70mm HL4 OR HL8	150mm	450mm

2. TO BE READ IN CONJUNCTION WITH TOTBM STD DWG 4.8.2.A.
3. THIRD PARTY UTILITY ALIGNMENTS TO BE ADJUSTED OVER SHORT DISTANCES AS NECESSARY AROUND TREES AND OTHER SURFACE AND UNDERGROUND STRUCTURES TO MAINTAIN REQUIRED SEPARATION DISTANCES.
4. WHERE TREES ARE BEING PLANTED AFTER GAS IS IN PLACE, TREE LOCATION SHALL BE ADJUSTED AND USE A ROOT DEFLECTOR AS NOT TO CONFLICT WITH REQUIRED SEPARATION DISTANCES. PROVIDE ROOT DEFLECTOR IN AREAS WHERE GAS IS LESS THAN 1000mm FROM ROOTBALL.