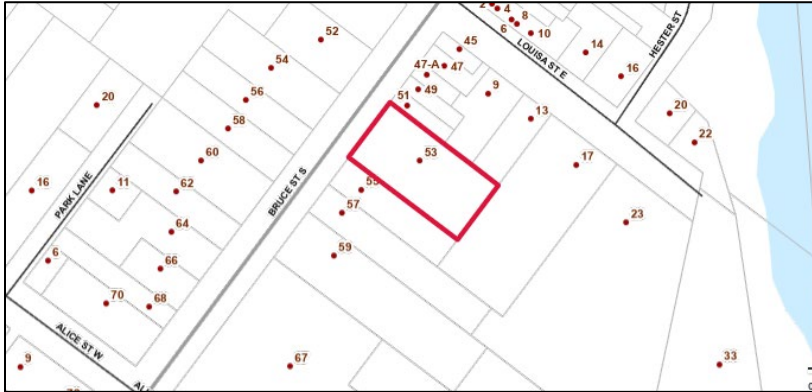


NOTICE RE: 53 Bruce Street - Planned Tree Removals

Location Map



Tree Removals

Tree removals as further described in the Tree Removals Plan (**Attachment 1**) are scheduled to occur on or about **February 11 2025**.

- All trees scheduled for removal are within the boundaries of 53 Bruce St.
 - Trees marked for removal include those within an area designated for proposed future development pursuant to the associated site plan.
 - Trees marked for removal will not affect the screening on the North end of the property – There is a tree line that borders 53 Bruce and 51 Bruce on the North Side that will be maintained and kept in place.
 - Preventive pruning and maintenance by the arborist will ensure a healthier canopy for the existing trees, hedges, and shrubs during the upcoming growing season.
 - A number of dead trees are marked for removal
 - A landscaping plan is proposed as part of the associated site plan.
- (**Attachment 2**)

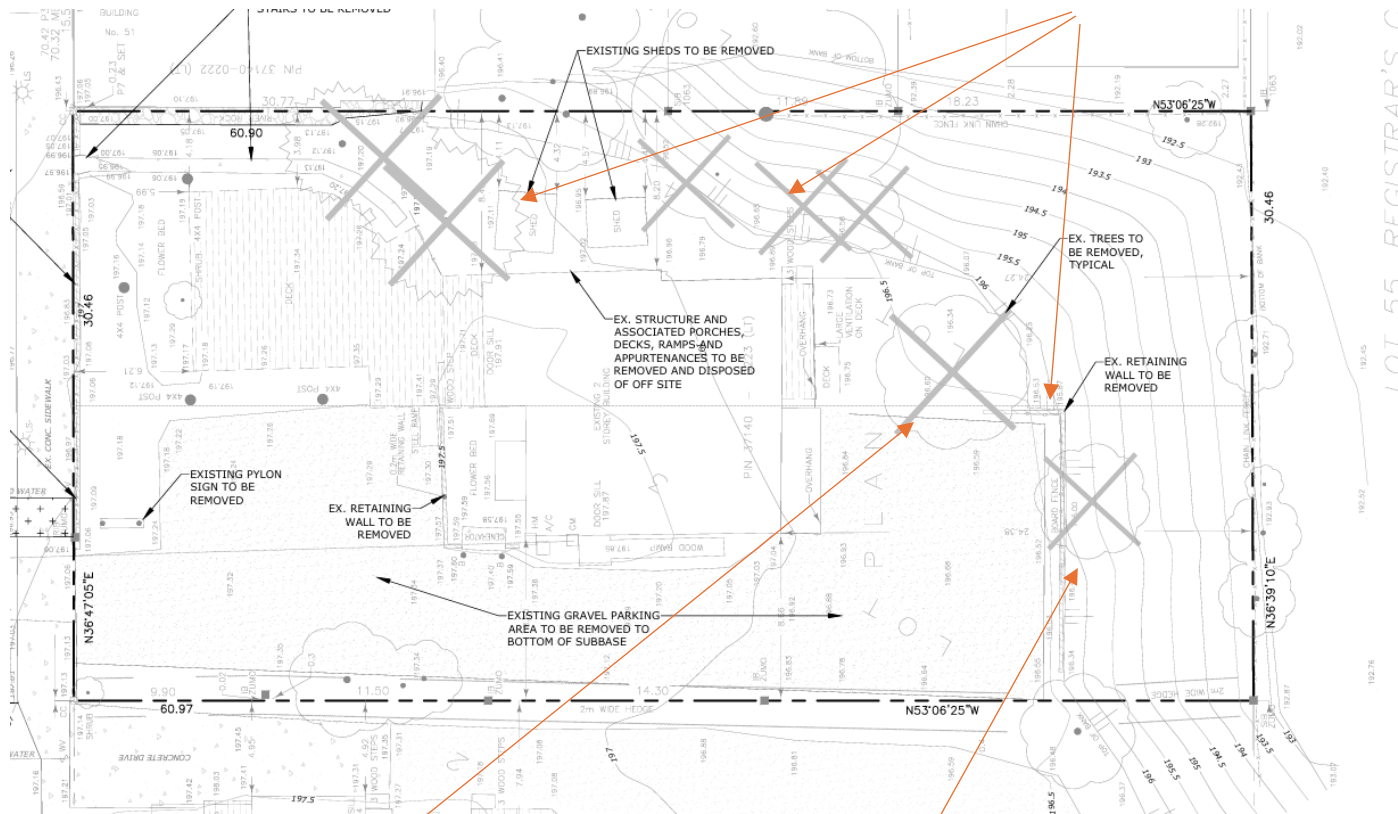
Attachment 1 Tree removals plan

Attachment 2 Proposed landscaping

Attachment 1

Tree Removal – Arborist Comments

Trees fall with-in property line: Walnut, Cedar, Ash, Mulberry – 3 dead trees



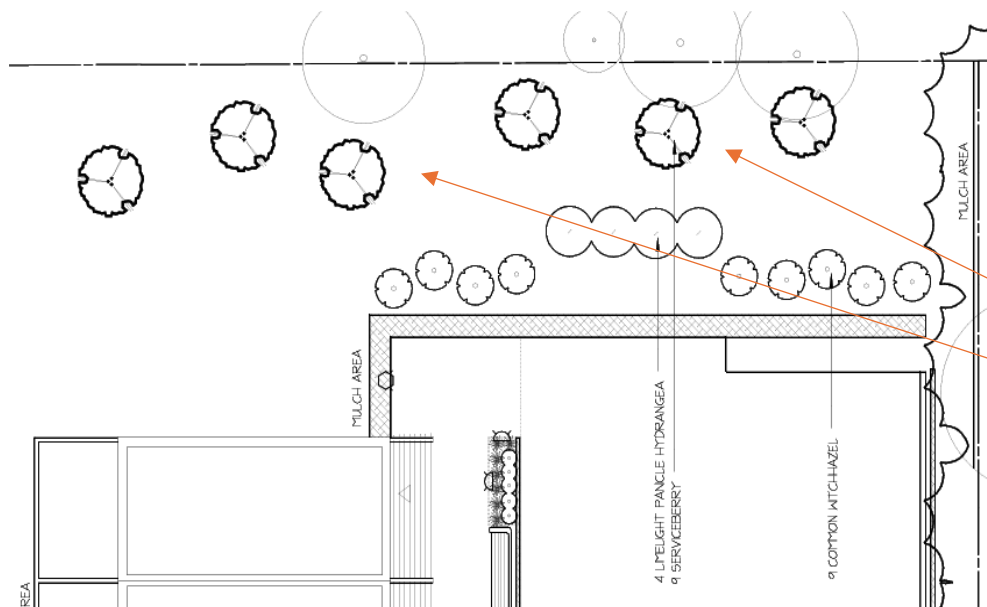
Dead Tree – Ash to be removed

Mulberry Tree to be Removed

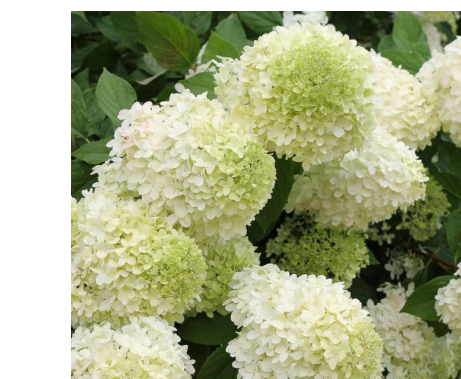
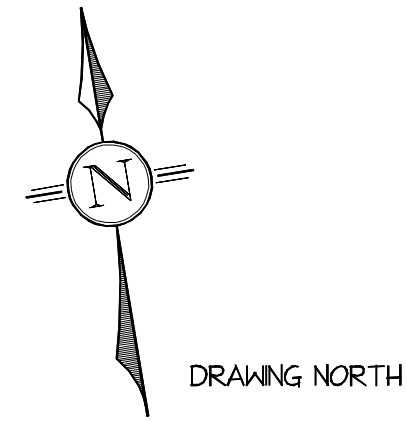
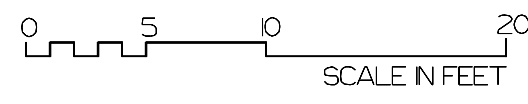
Arborist Comments

Removal List: Maple & Mulberry East End of Property – Walnut Trees: in line with new Building # 2 on Site Plan (Reason for removal)
Spruce Tree – in line with foundation of Building # 2 and pool area.
All wood and brush to be cleaned and removed from site – trees to be cut to ground level (at time of excavation stumps to be removed)
General Clean-up and preventive maintenance with pruning of hedges and trees on site to assist with growth in the spring and clean up the general over-all aesthetic of the current site. Helps to maintain healthy trees and Hedges for future.

Planting Plan – Rear of the Property – Screening Affect (East Lot Line)



Service Berrie's Planted to replace removed shrub and tree - provide additional screening – Growth Rate 2 FT/year - East Lot Line at Landscape Wall



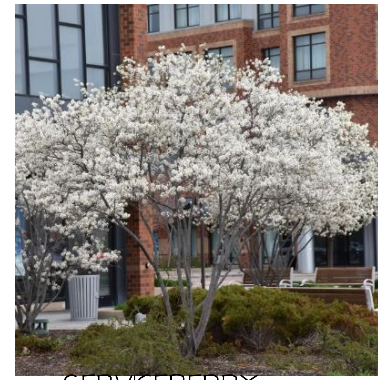
LIMEIGHT PINKLE HYDRANGEA Height: 125cm -150cm Spread: 125cm -150cm



HOKSI ANGLAJAPANESE YEN Height: 250-300cm Spread: 150-175cm



BLUE STEM GRASS Height: 80-100cm Spread: 30-40cm



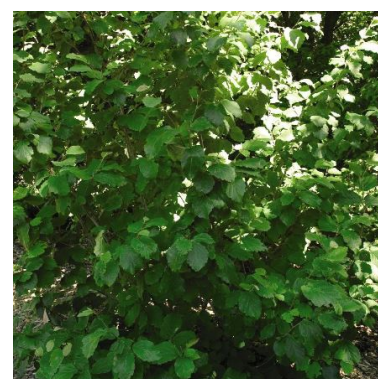
SERVICEBERRY Height: 5-6m Spread: 3-4m



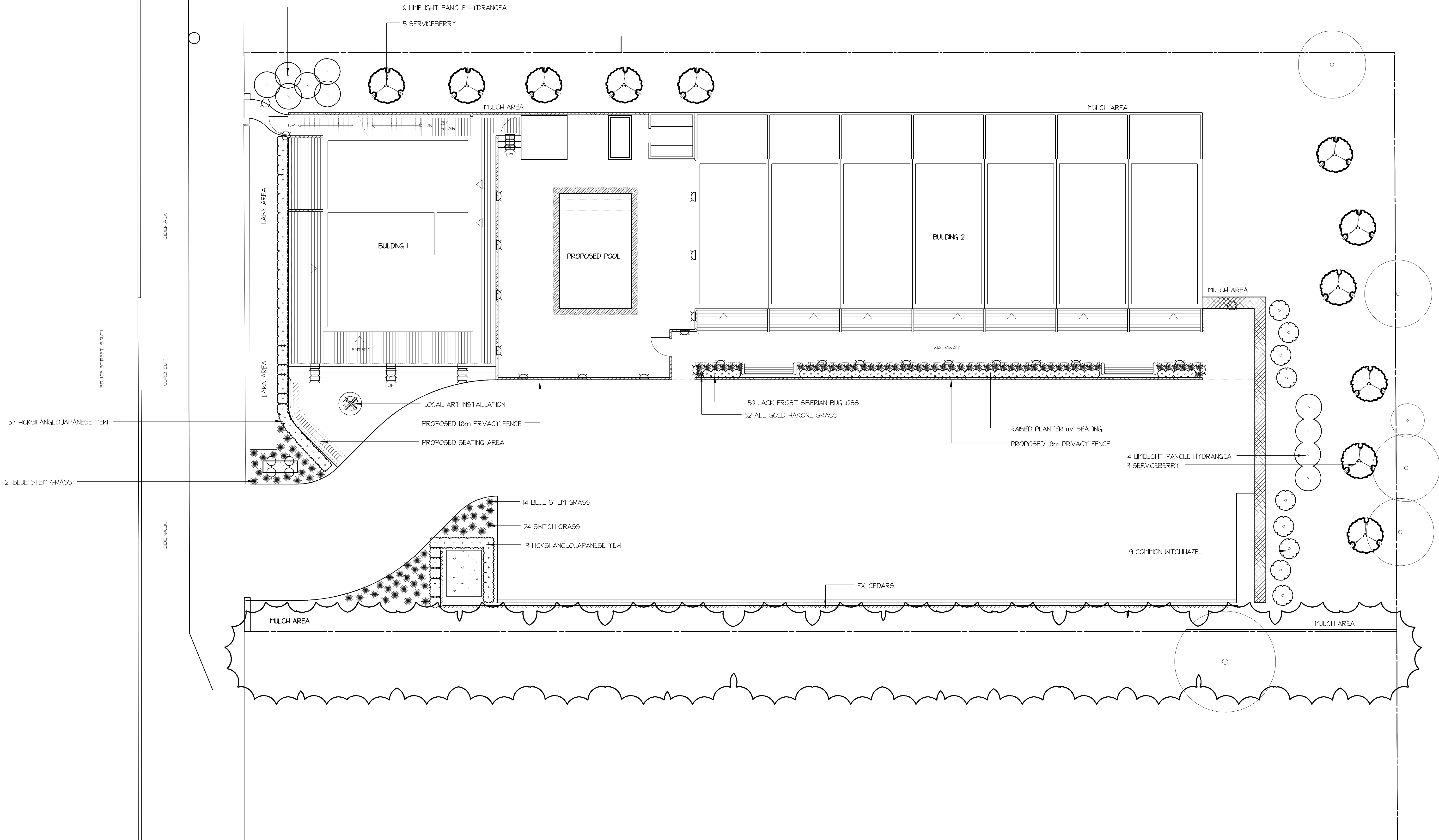
SWITCH GRASS Height: 100-125cm Spread: 60-90cm



JACK FROST SIBERIAN BUGLOSS ALL GOLD HAKONE GRASS Height: 30-40cm Spread: 50-60cm



COMMON WITCHHAZEL Height: 4-5m Spread: 4-5m



- HOKSI ANGLAJAPANESE YEN
- COMMON WITCHHAZEL
- LIMEIGHT PINKLE HYDRANGEA
- LITTLE BUNNY CHINESE FOUNTAIN GRASS
- MORNING LIGHT HADEN GRASS
- ALL GOLD HAKONE GRASS
- JACK FROST SIBERIAN BUGLOSS
- SERVICEBERRY

Qty.	Botanical Name	Common Name
Trees		
4	Hamamelis virginiana	COMMON WITCHHAZEL
5	Amelanchier x	SERVICEBERRY
4	Amelanchier canadense	SERVICEBERRY
Shrubs		
56	Taxus x media 'Hicks'	HOKSI ANGLAJAPANESE YEN
10	Hydrangea paniculata 'LimeLight'	LIMEIGHT PINKLE HYDRANGEA
Ornamental Grasses		
52	Hakonechloa macro 'All Gold'	ALL GOLD HAKONE GRASS
35	Schizachyrium scoparium	BLUE STEM GRASS
24	Panicum virgatum	SWITCH GRASS
Perennials and Annuals		
50	Brunnera macrophylla 'Jack Frost'	JACK FROST SIBERIAN BUGLOSS

01	OCT	CONU PLANT
01	OCT	CON2 PLANT

No.	Date	Description
REVISIONS		

53
BRUCE STREET S.
THORNBURY, ON



SCALE	P - 8'	PROJECT NO. Con2
DRAWN BY	JD	
CHECKED BY	FW	SHEET NO. PLANTING PLAN01
DATE	Jan 2025	
DATE OF PRINT		