

What to Expect

Working Hours

Work will be completed Monday to Friday between the hours of 7:00 am and to 7:00 pm, in accordance with town by-laws. Work after hours, on statutory holidays, or on weekends will only occur if necessary and with prior approval from Town Council.

Noise

In accordance with the Town Noise Control By-law 2002-9, residents should expect some noise from construction activities during working hours. The contractor will make efforts to reduce nuisances when possible.

Traffic Impacts

Minor traffic delays may occur during active construction. Residents may see increased traffic volume due to construction vehicles, dump trucks, and site crews operating. Please be aware of posted construction signage and workers in the area. If road or lane closures are needed, advance notice will be provided through posted signs.

Mud Tracking and Dust Control

The contractor is responsible for maintaining clean and safe roads throughout construction. Residents should expect muddy and dusty conditions during some construction activities; however, mitigation measures to address dust and mud tracking will be taken where possible.

Vibration

The possibility of vibrations due to compaction equipment during construction is not anticipated to be significant, but residents should protect valuables that may be susceptible to damage due to vibration.

Property Restoration

All properties within the construction work area will be restored to their pre-existing condition. Please note driveways will be restored where they presently exist, and the laying of sod and tree planting will be completed during ideal growing seasons.

Waste and Recycling Collection

Garbage collection will begin once collection vehicles can safely access homes in the new subdivision. Until access is safe for collection vehicles, homeowners should contact the developer for garbage collection details.

Residents can also use waste disposal and diversion services at the Landfill & Recycling Depot, located at 788090 Grey Road 13.

For more information on this project and to subscribe for updates, please visit
www.thebluemountains.ca/CottagesatLoraBay.

For more information, please contact:

Engineering Consultant Contact: Contractor Contact:

Austin Spencer

C.F. Crozier & Associates Inc.

(705) 446-3510

aspencer@cfcrozier.ca

Dan Bell

iN4Structure

(519) 404-3229

dbell@in4structure.ca

Developer Contact:

Alex Drung

Reid's Heritage Homes

(519) 658-6656

adrung@heritagehomes.com

Town Contact:

Brian Worsley

Development Engineering

Town of The Blue Mountains

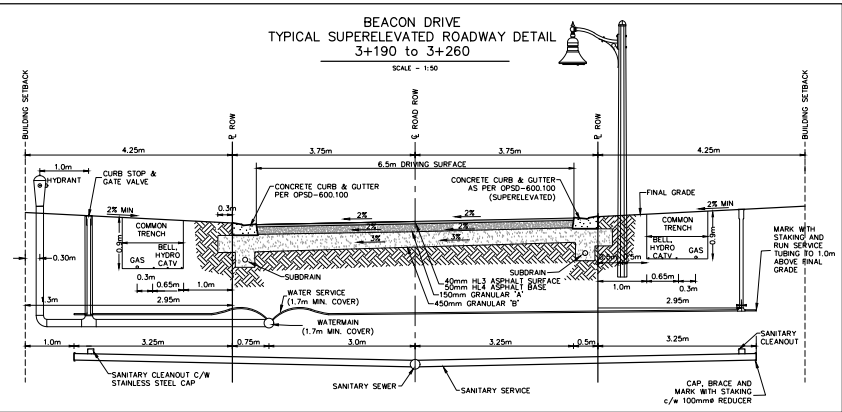
(519) 599-3131 ext. 220

Developmentengineering@thebluemountains.ca

In Case of Emergency:

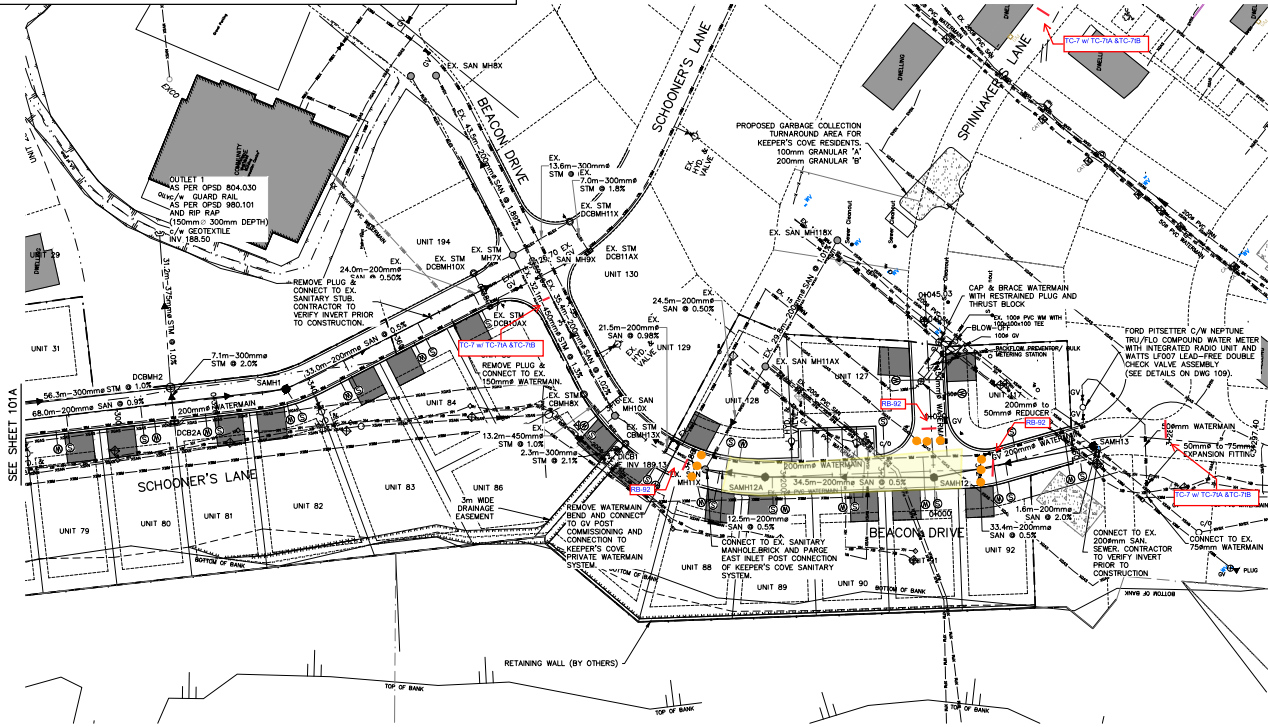
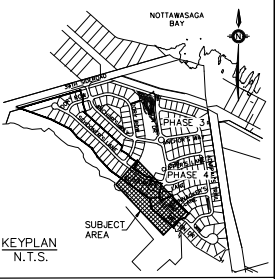
Dan Bell

(519) 404-3229



Proposed
TCP

NTS



1. THIS DRAWING IS THE EXCLUSIVE PROPERTY OF C.F. CROZIER & ASSOCIATES INC. AND THE REPRODUCTION OF ANY PART WITHOUT PRIOR WRITTEN CONSENT OF THIS OFFICE IS STRICTLY PROHIBITED.
2. THE CONTRACTOR SHALL VERIFY ALL DIMENSIONS, LEVELS, AND DATUMS ON SITE AND REPORT ANY DISCREPANCIES OR OMISSIONS TO THIS OFFICE PRIOR TO CONSTRUCTION.
3. THIS DRAWING IS TO BE READ AND UNDERSTOOD IN CONJUNCTION WITH ALL OTHER PLANS AND DOCUMENTS APPLICABLE TO THIS PROJECT.
4. DO NOT SCALE THE DRAWINGS.
5. ALL EXISTING UNDERGROUND UTILITIES TO BE VERIFIED IN THE FIELD BY THE CONTRACTOR PRIOR TO CONSTRUCTION.

GEODEIC BENCHMARK
GEODEIC BENCHMARK 72U297 HAVING AN ELEVATION OF 231.264m (PUBLISHED 1972), TABLE IN TOP OF ROAD, 25.3m SW OF CENTRE LINE OF HWY NO. 26, 11m SW OF FENCE, AND AT ROAD LEVEL.

TEMPORARY BENCHMARKS
TBM1: TOP NUT OF FIRE HYDRANT AT SOUTHWEST INTERSECTION OF BEACON DRIVE & ANCHOR'S WAY. ELEV. 189.05m
TBM2: TOP NUT OF FIRE HYDRANT, NORTH OF UNIT 153, ON SUNSET BOULEVARD, APPROX. 85m EAST OF BEACON DRIVE. ELEV. 183.17m

No.	ISSUE / REVISION	DATE: MM/DD/YYYY
1	ISSUED FOR FIRST SUBMISSION	10/30/2020
2	ISSUED FOR SECOND SUBMISSION	03/22/2021
3	ISSUED FOR TENDER	04/19/2021
4	ISSUED FOR FINAL APPROVAL	05/14/2021

Engineer
A. J. SPENCER
100227111
MAY 14, 2021
PROVINCE OF ONTARIO

Project
COTTAGES AT LORA BAY, PHASE 5
THE TOWN OF THE BLUE MOUNTAINS
Drawing
GENERAL SERVICING PLAN - EAST

Drawn By: J.O. Design By: J.O. Project: 183-5600
Scale: 1:500 Date: OCT. 30, 2020 Check By: A.S. Drawing: 101B

CROZIER ASSOCIATES
Consulting Engineers

THE HARBOUREDGE BUILDING,
40 HURON STREET, SUITE 301,
COLLINGSWOOD, ONTARIO M5S 1B5
705 448-3510 T
705 448-3520 F
www.crozier.ca
info@crozier.ca

