



2024 Annual Performance Report The Town Of The Blue Mountains

Reporting Period: January 1, 2024, to December 31, 2024

Prepared by: Roads and Drainage division

Table of Contents

1. Introduction.....	3
2. System Description.....	4
3. Monitoring Data and Environmental Trends.....	5
3.1. Summary and Interpretation of Monitoring Data...	5
3.2. Water Quality Analysis.....	6
3.3. Oil and sediment capture	8
3.4. Environmental Trends.....	12
4. Operation Problems and Corrective Actions.....	13
5. Inspection and Maintenance Activities	13
5.1. Inspection of Stormwater assets	14
5.2. Calibration For Monitoring Equipment	15
6. Complaints Related to the Sewage Works.....	15
6.1. Town of the Blue Mountains Complaints	16
6.2. Steps taken to address Complaints	18
7. Alterations to the Authorized System	19
8. A summary of all Spills or Abnormal Discharge Events...	24
9. Status of Actions for Previous Years.....	25

Appendixes

Appendix A: Performance Assessment Report for Oil grit separators

Appendix B: Facility Work Order Summary

Appendix C: Stormwater Asset Work Order Tracker

Appendix D: Certificate of Analysis of Stormwater ponds

1. Introduction

The Stormwater Management System ('SWM') is an integral component of the linear infrastructure in the Town of The Blue Mountains ("The Town"). Under the ownership of the Town of the Blue Mountains and with operational oversight by the Operations Department, the SWM system plays a critical role in drainage, flood control, and environmental protection.

The Ministry of the Environment, Conservation and Parks (MECP) oversees Stormwater regulatory compliance, inspections, and reporting. Consolidated Linear Infrastructure Environmental Compliance Approvals (CLI-ECA) are issued under the Environmental Protection Act and Ontario Water Resources Act. The MECP issued a SWM CLI-ECA # 111-S701 Issue number: 1 to the Town of the Blue Mountains on August 11, 2022. The CLI-ECA defines the terms and conditions of operation of the Town's SWM System. Schedule E, Section 5.2 of the CLI-ECA, requires the Town to submit an Annual Performance Report to the Ministry Director on or before April 30th of each calendar year. This report covers the period from January 1st to December 31st of the preceding calendar year and includes summary information with respect to monitoring data, environmental trends, operational problems and corrective actions taken, inspections, maintenance, repairs, public complaints, alterations, spills/abnormal discharges, and any other items that may have affected the SWM system operations during the reporting period.

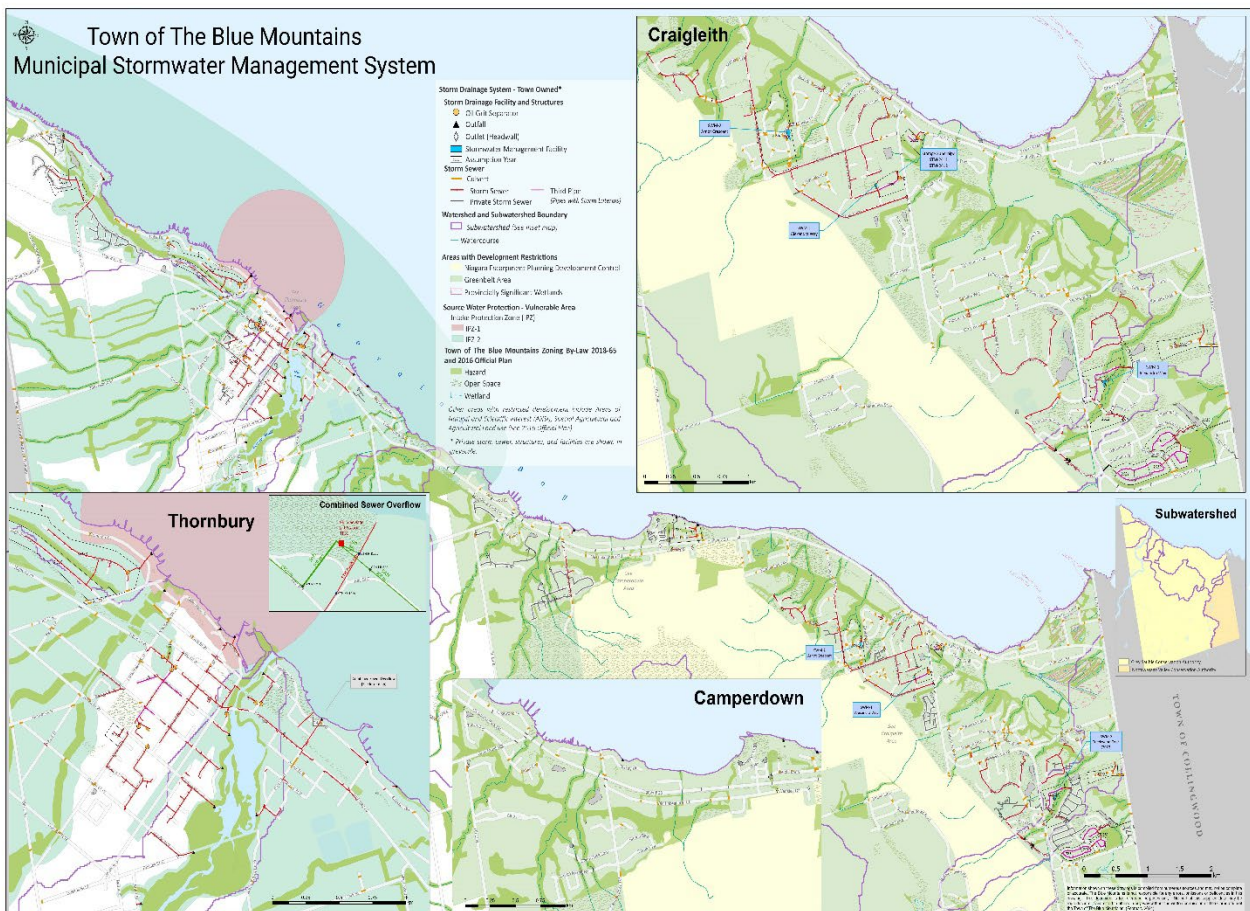
This report will be made available by June 1, 2025, on the Town's website or by contacting the Town of the Blue Mountains Operations Department. If you have any questions or comments concerning the report, please contact the Town at the address and phone number listed below or by email at: operationsinfo@thebluemountains.ca

Town of The Blue Mountains,
32 Mill Street, P.O. Box 310, Thornbury, ON N0H 2P0
Tel: 519-599-3131 ext. 276 | Fax: 519-599-7723
Email: operationsinfo@thebluemountains.ca

2. System Description

The Town of The Blue Mountains Municipal Stormwater Management (SWM) System serving the Town's drainage area, is a separate system for stormwater which is designed not to convey sanitary sewage or combined sewage within Georgian Bay and the Lake Simcoe watershed. The Authorized System comprises Storm Sewers, Stormwater Management Facilities, stormwater pumping stations and Sewage Works associated with a Third Pipe Collection System that have been added, modified, replaced, or extended through authorization.

Map1 of Town of the blue Mountains Stormwater Management system.



3. Monitoring Data and Environmental Trends

Where ECA 111-S701, Schedule E section 5.2.2 requires:

“a summary of all monitoring data along with an interpretation of the data and environmental trends based on data from the previous five (5) years”

3.1. Summary and Interpretation of Monitoring Data

The Town is presently awaiting the release of the MECP Monitoring Guidance Document to fulfill the monitoring obligation for the overall SWM system. As required by the CLI-ECA, Schedule E, Section 4.0 the Town must develop and implement a monitoring plan within 24 months of the issuance of the finalized MECP Guidance Document. The MECP Monitoring Guidance Document has not been finalized at the time of the submission of this report.

There are currently two (2) ponds that previously had monitoring requirements incorporated into their original ECA's which are required to continue under the Town's CLI-ECA. Details of these monitoring activities are outlined below:

- Second Nature Phase1- Creekwood Court Stormwater Pond
- Georgian Woodland - Arnot Crescent Stormwater Pond

Currently the Town conducts water quality analysis on the influent and effluent of both ponds during the wet season (both Stormwater ponds were sampled during the early spring period). The results for the Georgian woodland pond (Arnot Crescent) showed the TSS removal efficiency was (88%), copper and nitrogen concentration are within acceptable range for water quality of SWMP in Ontario. The nitrogen and phosphorous levels are slightly higher than PWQO values. The Creekwood Pond is designed so that it discharges from the forebay to a constructed wetland.

3.2. Water Quality analysis

Creekwood Court Stormwater Pond

Table 1 showing data collected for water quality of Creekwood Court stormpond

Analysis	PWQO	Outlet	Inlet
Total Suspended Solids [mg/L]		17	28
Biochemical Oxygen Demand (BOD5) [mg/L]		9	< 12
Chemical Oxygen Demand [mg/L]		41	17
Total Kjeldahl Nitrogen [as N mg/L]		1.2	1.0
Mercury (total) [mg/L]	0.0002 <	0.00001 <	0.00001 <
Hardness [mg/L as CaCO ₃]		125	237
Silver (total) [mg/L]	0.0001 <	0.00005 <	0.00005 <
Arsenic (total) [mg/L]] 0.005	0.0008	0.0014
Barium (total) [mg/L]		0.0110	0.0715
Boron (total) [mg/L]	0.2	0.017	0.084
Beryllium (total) [mg/L]	1.1 <	0.000007	0.000025
Cobalt (total) [mg/L]	0.0009	0.000233	0.000401
Cadmium (total) [mg/L]	0.0002	0.000013	0.000006
Calcium (total) [mg/L]		39.4 66.5	66.5
Chromium (total) [mg/L]	0.001	0.00034	0.00069
Copper (total) [mg/L]	0.001	0.002	0.001
Iron (total) [mg/L]	0.3	0.306	0.866
Lead (total) [mg/L]	0.001	0.00020	0.00027
Magnesium (total) [mg/L]		6.50	17.2
Manganese (total) [mg/L]		0.0521	0.0939
Molybdenum (total) [mg/L]		0.0004	0.0005
Phosphorus (total) [mg/L]	0.02	0.074	0.044
Potassium (total) [mg/L]		4.61	2.52
Sodium (total) [mg/L]		22.3	28.6
Nickel (total) [mg/L]		0.0011	0.0015
Antimony (total) [mg/L]		< 0.0009	< 0.0009
Selenium (total) [mg/L]		0.00015	0.00012
Thallium (total) [mg/L]		<0.000005	< 0.000005
Vanadium (total) [mg/L]		0.00058	0.00107
Zinc (total) [mg/L]	0.02	0.005	0.004

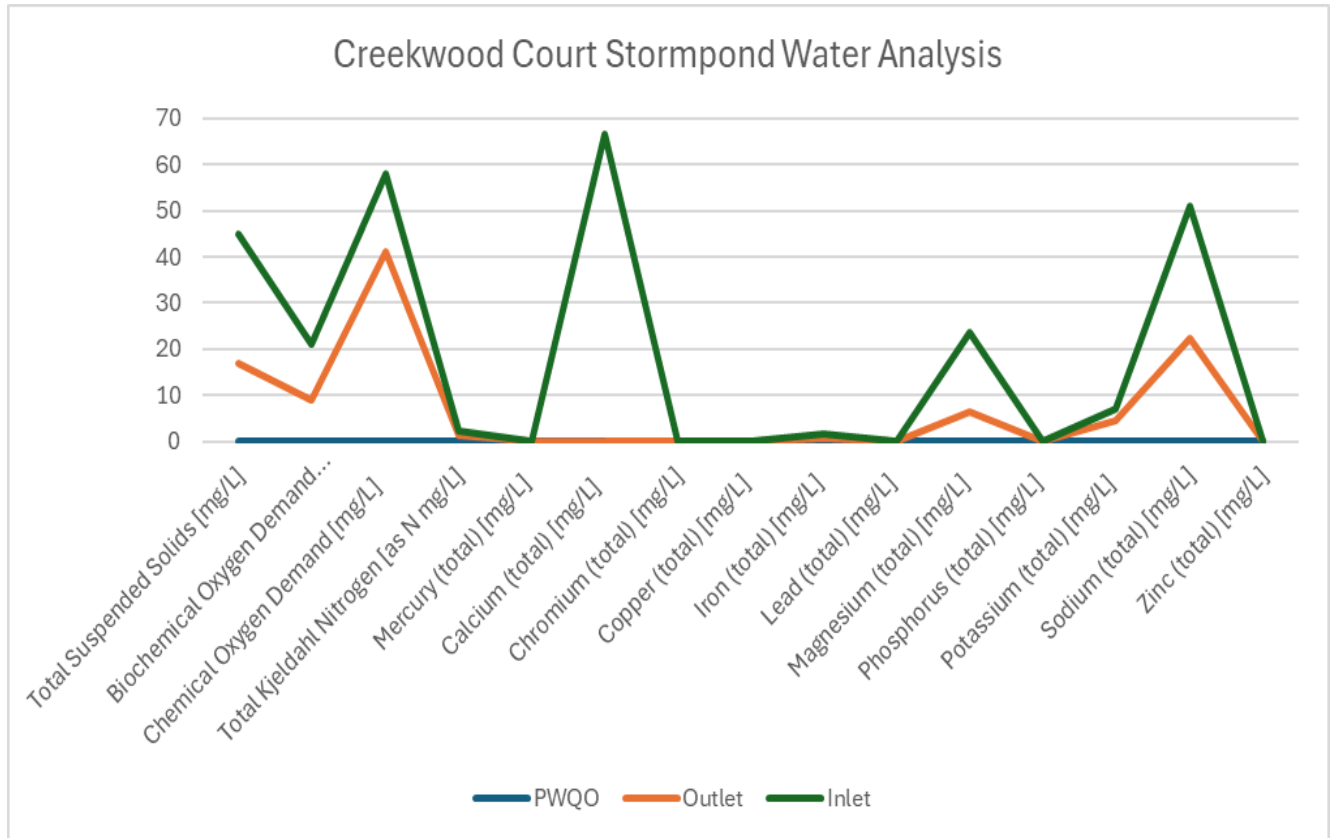
2024 Annual Performance Report

The Town of the Blue Mountains: The Town of the Blue Mountains Stormwater Management System

Environmental Compliance Approval Number: 111-S701

Reporting Period: January 1, 2024, to December 31, 2024

Figure 1 showing water quality analysis for Creekwood Court Stormpond



Arnot Crescent Stormwater Pond

Table 2 showing data collected for water quality of Arnot Crescent stormpond

Analysis	PWQO	Outlet	Inlet
Total Suspended Solids [mg/L]		8	65
Biochemical Oxygen Demand (BOD5) [mg/L]		< 12.5	< 4
Chemical Oxygen Demand [mg/L]		31	15
Total Kjeldahl Nitrogen [as N mg/L]		1.2	0.9
Mercury (total) [mg/L]	0.0002 <	0.00001 <	0.00001
Hardness [mg/L as CaCO ₃]		237	106-118
Silver (total) [mg/L]	0.0001 <	0.00005 <	0.00005
Arsenic (total) [mg/L]] 0.005	0.0007	0.0014
Barium (total) [mg/L]		0.00753	0.0216
Boron (total) [mg/L]	0.2	0.014	0.112
Beryllium (total) [mg/L]	1.1 <	0.000007	0.000054
Cobalt (total) [mg/L]	0.0009	0.000327	0.000825
Cadmium (total) [mg/L]	0.0002	0.000024 0.000008	0.000024 0.000008
Calcium (total) [mg/L]		33.7-21.8	33.7-21.8
Chromium (total) [mg/L]	0.001	0.00048	0.00139
Copper (total) [mg/L]	0.001	0.004	0.002
Iron (total) [mg/L]	0.3	0.313-1.58	0.313-1.58
Lead (total) [mg/L]	0.001	0.00037	0.00042
Magnesium (total) [mg/L]		5.32	15.5
Manganese (total) [mg/L]		0.0453	0.0765
Molybdenum (total) [mg/L]		< 0.0004	< 0.0004
Phosphorus (total) [mg/L]	0.02	0.055	0.055
Potassium (total) [mg/L]		2.41-2.28	2.41-2.28
Sodium (total) [mg/L]		16.1	29.3
Nickel (total) [mg/L]		0.0013	0.0023
Antimony (total) [mg/L]		< 0.0009	< 0.0009
Selenium (total) [mg/L]	0.00015	0.00016	0.00012
Thallium (total) [mg/L]		< 0.000005	0.000010
Vanadium (total) [mg/L]		0.00152	0.00187
Zinc (total) [mg/L]	0.02	0.006-0	0.006

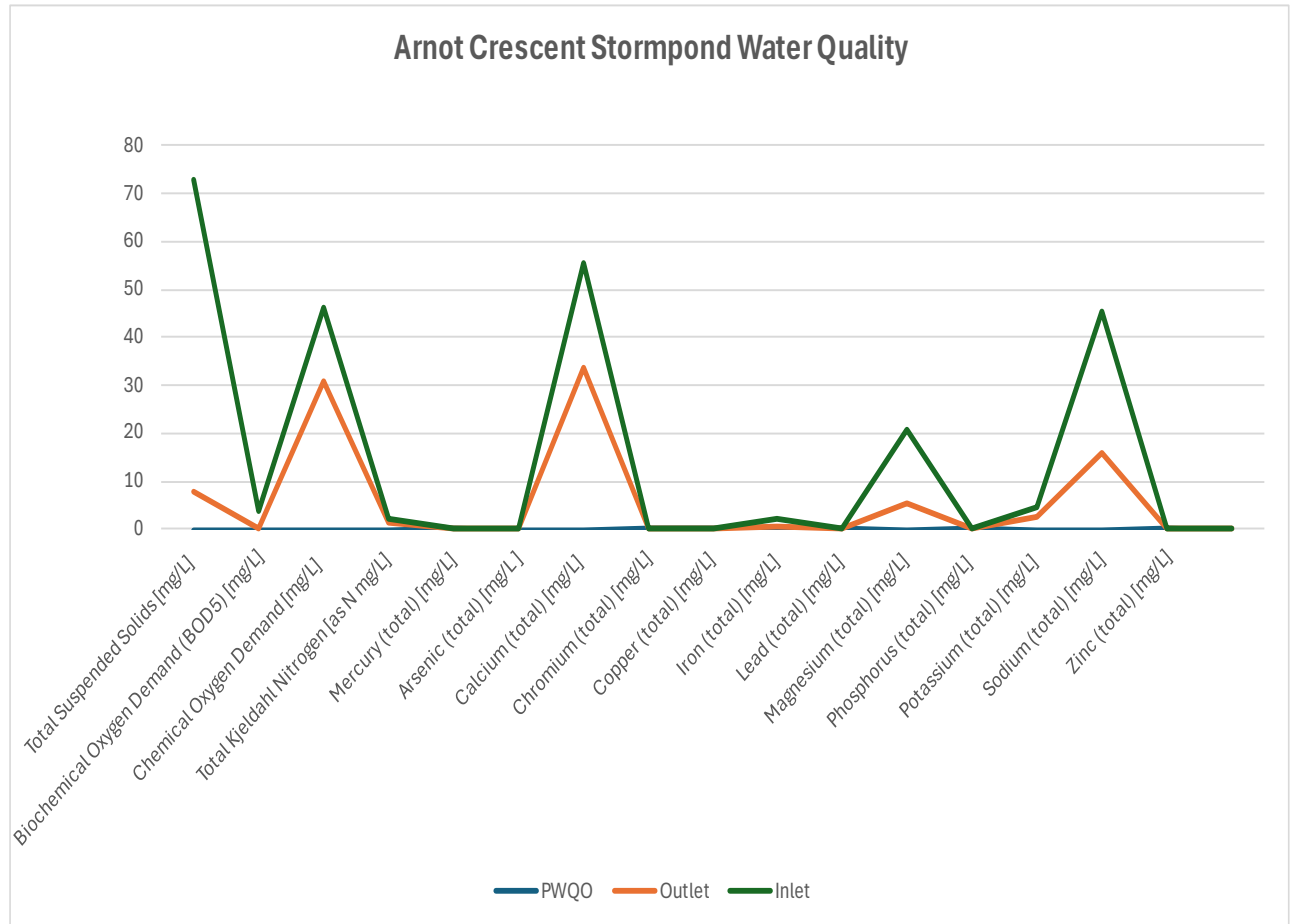
2024 Annual Performance Report

The Town of the Blue Mountains: The Town of the Blue Mountains Stormwater Management System

Environmental Compliance Approval Number: 111-S701

Reporting Period: January 1, 2024, to December 31, 2024

Figure 2 showing water quality analysis for Arnot Crescent stormpond



3.3. Oil and sediment capture.

The depth of oil and sediment in the oil grit separator units are measured and compared to the manufacturer's specifications annually. After inspections, our qualified service provider undertakes the cleaning process.

During the reporting period for 2024, inspection for the oil grit separators provided the following data.

Table 3 showing data collected for sediment accumulated in Oil grit separators.

Locations	Sediment depth(mm)	Specification(mm)
TOWN HALL PARKING LOT, 32 MILL STREET, THORNBURY (Across st)	329	455
TOWN HALL PARKING LOT, 32 MILL STREET, THORNBURY	379	455
ARTHUR STREET, THORNBURY	683	455
68 ARTHUR STREET, THORNBURY	784	455
ARTHUR STREET, THORNBURY Parking lot	25.3	354
THORNBURY MEDICAL CENTRE, 78 KING ST. E.	480	455
HESTER ST. PARKING LOT, THORNBURY	379	228
Bannerman DEV -Schoolhouse crt	683	228
8 Lendvay Alley	581	455
Crosswinds Blvd. (Second Nature or Windfall)	834	228
TWERIP Victoria St. S. @ Arthur St. W.	278	455
Villages Peaks Bay, at Delphi, or Peaks Bay West	531	228
Trailwoods Ph 3 - Pheasant Run (off of the 10th Line)	1163	455
Trailwoods Ph 3 - Timber Lane (off of Peel St. N. & Timberlane)	303	455
BVCC Parking Lot - Altred St W (East entrance)	25.3	228
BVCC Parking Lot - Altred St W (East Entrance)	50.6	228

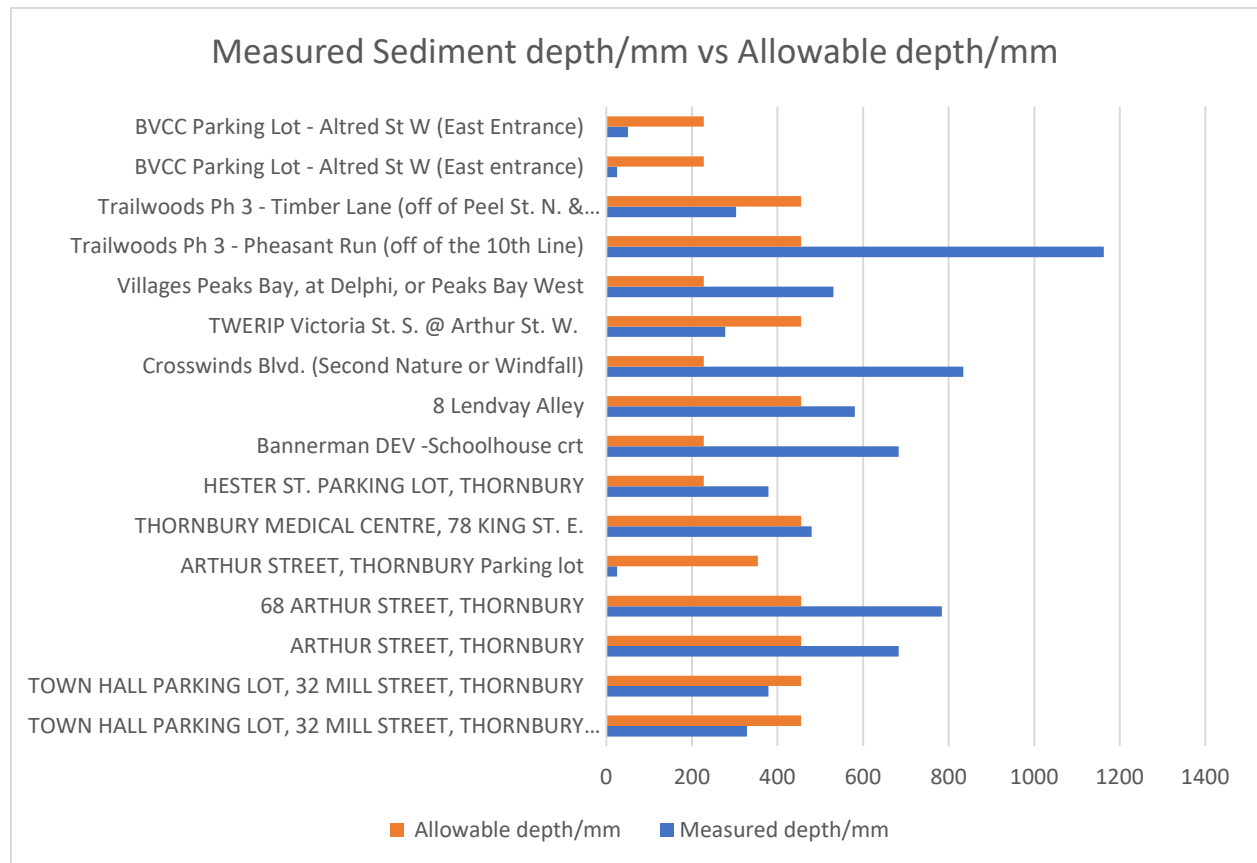
2024 Annual Performance Report

The Town of the Blue Mountains: The Town of the Blue Mountains Stormwater Management System

Environmental Compliance Approval Number: 111-S701

Reporting Period: January 1, 2024, to December 31, 2024

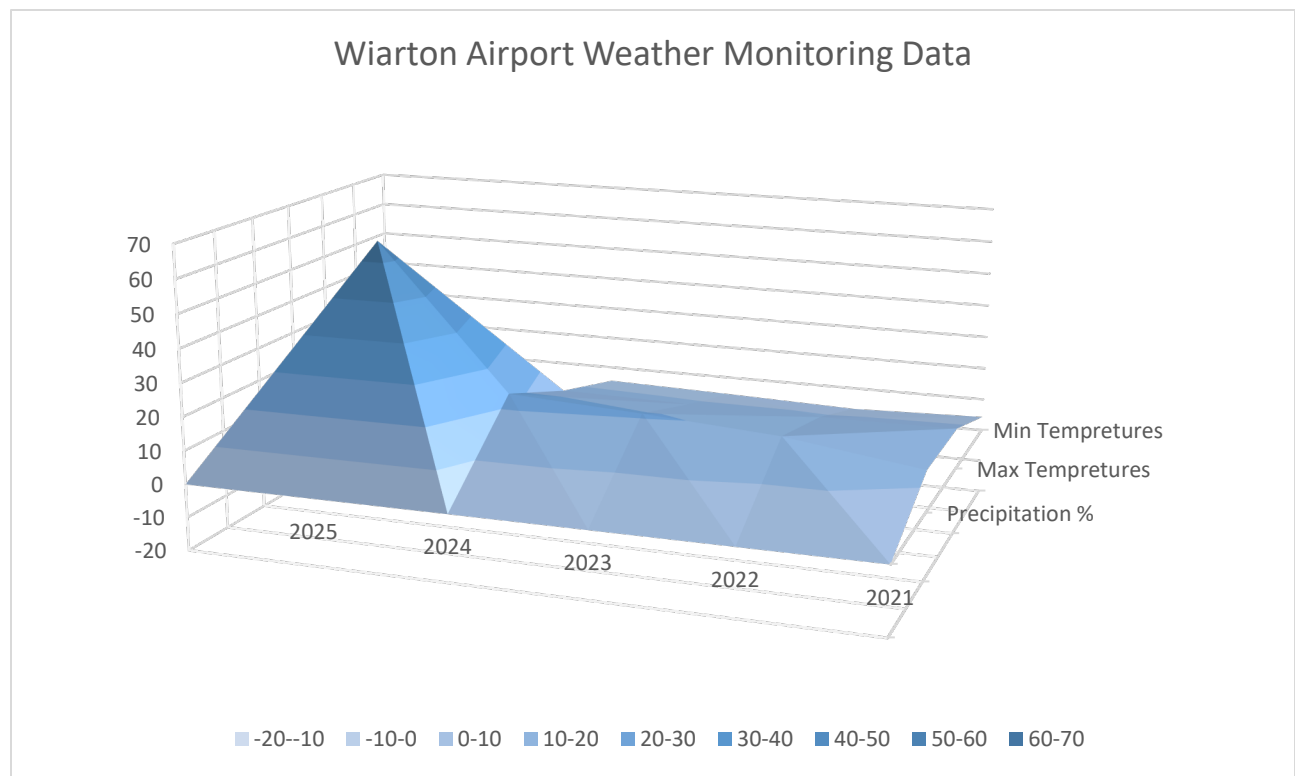
Figure 3 showing plots for sediment depth measured vs. manufacturer specification.



3.4. Environmental Trends

To enhance the Town's understanding of local environmental dynamics, and the impacts to the SWM system, 5 years of precipitation and temperature data were collected from the weather station at the Wiarton Airport. This weather station is close to the geographic center of the Town of the Blue Mountains, and as such will provide a good benchmark of background data for the development of the Monitoring program noted in Section 2.1 above. The data in Figure 4 below presents the previous 5 years of daily precipitation (rain and snowfall) and the average daily temperature collected at the Wiarton Airport. The data indicates an increasing trend, in both frequency and intensity of precipitation events. The data also indicates a trend of fewer days below -10 degrees Celsius. These trends in precipitation and temperature are important to point out because they have a direct impact on the SWM system.

Figure 4: Wiarton Airport Weather Monitoring Data



4. Operation Problems and corrective action

Where ECA 111-S701, section 5.2.4 requires:

“a summary of any operating problems encountered, and corrective actions taken.”

The list below provides a summary of documented Operational Problems and Corrective Actions with respect to linear infrastructure for the reporting period of 2024.

Table 4 showing dates during 2024 when operating issues were identified

Time Period	Operating Issues	Location	Corrective actions
August 2024	Blocked drainage outlet	Elgin and Bay Street E	Removal of debris
July 2024	Blocked storm pond Outlet	Arnot Crescent	Garbage removal
May 2024	Storm Culvert CSP - failed	7 th Line Happy Valley	Replaced with PVC
April 2024	Blocked Drainage Ditch	Wards Rd. Happy Valley 10 th Line	Removal of debris
April 2024	Blocked Drainage	Elgin Street N	Catch basin repairs

5. Inspection and Maintenance activities

Where ECA 111-S701, Schedule E section 5.2.5 requires:

“a summary of all inspections, maintenance, and repairs carried out on any major structure, equipment, apparatus or mechanism.”

The SWM system has been designed to operate independently and takes advantage of gravity flow for stormwater to reach its outlet (e.g. SWM Facility, water course) To maintain the current level of service and achieve good asset life cycle a range of activities are undertaken. These may include:

- Inspection and Condition Assessment of the stormwater management facilities
- Replacements of Stormwater mains as needed
- Visual inspections of the stormwater management facilities annually and
- Vegetation control activities at each facility throughout the year

5.1. Inspection of Stormwater assets

All the municipal drains, ponds and outlets discharging into the Georgian bay are inspected seasonally and after a period of heavy rain fall (>50mm) to serve as a proactive measure to identify potential issues before they escalate, contributing to the overall effectiveness and longevity of the system.

Table 4 Stormwater assets inspected, and conditions observed.

Asset Type	Inspection	Frequency of Inspection	2024 Comment
Stormwater Ponds	<i>Visual Condition</i>	Semi-annual	Inspections completed
Stormwater Ponds	<i>Sediment Survey</i>	Initial 5 years, and to be evaluated.	Program to start in 2026
Roadside ditches and drains	Visual Condition	Semi-annual	Inspections completed
Storm Sewer Outlets	Visual Condition	As required	Inspections completed
Catch basins	Visual Condition	Annually	Annual inspections completed
Stormwater mains	CCTV	As required	Closed Circuit TV inspection (ongoing)
Oil Grit Separator	Sediment depth	Annually	Annual Inspection Completed.
Culverts	Visual Condition	As required	Inspections Completed

5.2. Calibration For Monitoring Equipment

Schedule E, Section 5.2.11 of the CLI-ECA requires a summary of the calibration and maintenance conducted on all monitoring equipment.

As of the current reporting period, the Town's SWM system does not include any SWM monitoring equipment.

The SWM has been designed to operate independently and takes advantage of gravity flow for stormwater to reach the water courses. The Town completes inspections and maintenance at the required frequencies to ensure the continued operation of the system.

During the warmer weather, the routine maintenance activities include grass cutting and garbage removal, as necessary, in and around the SWM areas. The Town completes street sweeping and cleaning catch basin grates as required to limit the grit and sediment entering the storm system.

6. Complaints related to the Sewage Works received.

Where ECA 111-S701, Schedule E section 5.2.7 requires:

"a summary of any complaints received, and any steps taken to address the complaints;"

The Town uses two separate systems to process online requests 24/7 as part of its Standard Operating Procedure, the Online Services Portal, and the Virtual Town Hall. Community complaints could be about visual, colour, odour, services, flooding, and other issues.

During the reporting period, the Town of the Blue Mountains received complaints from residents residing throughout the Municipality and neighboring vicinity.

Table 5: Showing complains reported and status of complaints.

2024 Annual Performance Report

The Town of the Blue Mountains: The Town of the Blue Mountains Stormwater Management System

Environmental Compliance Approval Number: 111-S701

Reporting Period: January 1, 2024, to December 31, 2024

6.1. Town of the Blue Mountains Complaints

<i>Request #</i>	<i>Issue</i>	<i>Status</i>	<i>Date</i>	<i>Location</i>
SRDRAI/2024000 1056	Culvert Maintenance Resident reports that culvert at this location has been crushed and is now blocked.	Closed	11/22/24	7 TH Line
SRDRAI/2024000 1011	Ditch Maintenance Resident requests we clear debris from ditch	Closed	10/31/24	Elgin and Bay Street E.
SRDRAI/2024000 0987	Culvert Maintenance Resident called to advise that there is mud/debris in their culvert, impacting drainage.	Closed	10/21/24	Blue Ski George Crs.
SRDRAI/2024000 0940	Culvert Maintenance Culvert is filling up with gravel.	Closed	10/01/24	Barclay Blvd.
SRDRAI/2024000 0938	Culvert Maintenance Creek between 117 and 119 Cortina Cres. plugged with plant and weed growth.	Closed	09/30/24	Cortina Crs.
SRDRAI/2024000 0927	Ditch Maintenance The ditch in front of the house at 104 Schoolhouse court has had bullrushes growing	Closed	09/24/24	Schoolhouse Crt.
SRDRAI/2024000 0918	Culvert Maintenance Resident noted that downed trees and brush on Wards Road blocking the storm culvert	Closed	09/20/24	Wards Rd.
SRDRAI/2024000 0890	Ditch Maintenance Water backs up on west side of driveway as culvert is lower than the existing height of the ditch.	Closed	09/11/24	James St.
SRDRAI/2024000 0873	Culvert Maintenance Resident also asks that we inspect ditches in area as they are filled with standing water.	Closed	09/09/24	Augusta Crs.
SRDRAI/2024000 0871	Culvert Maintenance Both sides of culvert have collapsed as a result of garbage truck, school bus and snowplow turning around	Closed	09/09/24	
SRDRAI/2024000 0867	Culvert Maintenance Resident called to advise that their culvert is collapsing.	Closed	09/09/24	Northmount Crs.

2024 Annual Performance Report

The Town of the Blue Mountains: The Town of the Blue Mountains Stormwater Management System

Environmental Compliance Approval Number: 111-S701

Reporting Period: January 1, 2024, to December 31, 2024

SRDRAI/2024000 0804	Ditch Maintenance Revamped the drainage ditches isn't quite right yet for my property.	Closed	08/15/24	Happy Valley
SRDRAI/2024000 0782	Ditch Maintenance Erosion in ditch after moderate rainfall	Closed	08/08/24	10 th Line
SRDRAI/2024000 0733	Culvert Maintenance Culvert in front of 120 Augusta and adjacent properties does not drain creating a pond	Closed	07/23/24	Augusta Crs.
SRDRAI/2024000 0719	Ditch Maintenance culvert is blocked and holding water	Closed	07/22/24	Craigmore Crs.
SRDRAI/2024000 0718	Ditch Maintenance Ditch leading to Monterra golf course. Long Grass/Noxious Weeds	Closed	07/22/24	Grand Cypress
SRDRAI/2024000 0709	Ditch Maintenance Ditch on 10th Line coming down the north hill into Redwing eroding with the rainwater collects in the culvert at the bottom	Open	07/18/24	10 th Line
SRDRAI/2024000 0687	Ditch Maintenance drainage from Arrowhead Cres onto our property at 123 Arrowhead Cres.	Closed	07/16/24	Arrowhead Crs.
SRDRAI/2024000 0638	Ditch Maintenance Along lot 14, the storm ditch, which is the Town property is full of water, reed and weeds which make the mud cumulate and does not let the water drain.	Closed	07/08/24	Delphi Lane
SRDRAI/2024000 0609	Culvert Maintenance The culvert on Davos is not draining well at 102	Closed	06/28/24	Davos Dr
SRDRAI/2024000 0607	Ditch Maintenance The overgrown weeds in the ditch have led to severe drainage problems and is currently clogged, causing water to accumulate and stagnate.	Closed	06/27/24	Timmons Street
SRDRAI/2024000 0604	Culvert Maintenance Resident discuss drainage concerns in a culvert adjacent to his property.	Closed	06/27/24	Wyandot Crs.
SRDRAI/2024000 0581	Catch Basin Maintenance The ditch in front of our home does not drain into the existing catch basin because the catch basin is higher than the ditch.	Closed	06/21/24	Crestview Crt

2024 Annual Performance Report

The Town of the Blue Mountains: The Town of the Blue Mountains Stormwater Management System

Environmental Compliance Approval Number: 111-S701

Reporting Period: January 1, 2024, to December 31, 2024

SRDRAI/2024000 0420	Flooding Swale issues	Closed	05/09/24	Timber Lane
SRDRAI/2024000 0389	Flooding We are getting a significant amount of puddling at the junction of our driveway and the side road.	Closed	05/01/24	12 th Sideroad
SRDRAI/2024000 0277	Flooding Drainpipe that comes out the back drain onto my property. It makes my yard so wet that I cannot properly cut my grass etc.	Closed	03/28/24	Margareth St S.
SRDRAI/2024000 0087	Flooding Resident called to note that the ditch near 115 Mission Road is breaching water onto the road.	Closed	01/22/24	Mission Rd.
SRDRAI/2024000 0007	Flooding Our back yard is in water. Two houses down from us (#132) does not have a proper open drain for the water to flow away from our property. It is blocked by his walkway. neighbour (#134) who has a small pond from lack of proper drainage flow.	Closed	01/02/24	Alezandra Way

6.2. Steps taken to address complaints

The complaints reported were reviewed and followed through with inspections, which triggered work orders to carry out the necessary maintenance activities by the Road and Drainage staff.

These activities include

- Flushing culverts
- Vacuuming Catch basins
- Roadside ditching

After Maintenance activities are completed, the work-orders are then closed out in the Towns reporting system.

7. Alterations to the Authorized System

“A summary of all Alterations to the Authorized System within the reporting period that are authorized by this Approval including a list of Alterations that pose a Significant Drinking Water Threat.”

For the reporting period January 2024 to December 31, 2024, alteration done to the Authorized System includes the following:

- Application for changes (i.e., additions, modifications, replacements, and/or extensions) to the Town’s stormwater management system were made for the following developments:

Table 6: showing list of application made by development that were authorised.

Development	Forms Issued
Eden Oak Trailhead Phase IA	SW1
Home farm development	SW1

Alterations to the Authorized System are shown below in Table 6, including the project status and if it has been identified as a Potential SDWT by the Risk Management Official.

Table 7: Alterations to the Authorized System

Item	Location	Status	Diameter (mm)	Length (m)	Potential SDWT
Main	Alice St W	New	300	85.9	Yes IPZ-3 Thornbury
Main	Alice St W	New	450	8.1	Yes IPZ-3 Thornbury
Lead	Alice St W	New	450	10.8	Yes IPZ-3 Thornbury
Main	Victoria St S	New	750	102.1	Yes IPZ-3 Thornbury
Main	Victoria St S	New	300	30.2	Yes IPZ-3 Thornbury
Main	Victoria St S	New	750	90.2	Yes IPZ-3 Thornbury
Main	Victoria St S	New	750	44.3	Yes IPZ-3 Thornbury
Main	Victoria St S	New	750	87.2	Yes IPZ-3 Thornbury
Main	Victoria St S	New	975	75.3	Yes IPZ-3 Thornbury
Main	Louisa St W	New	675	53.1	Yes IPZ-3 Thornbury
Main	Louisa St W	New	600	79.9	Yes IPZ-3 Thornbury
Main	Louisa St W	New	300	93.3	Yes IPZ-3 Thornbury

2024 Annual Performance Report

The Town of the Blue Mountains: The Town of the Blue Mountains Stormwater Management System

Environmental Compliance Approval Number: 111-S701

Reporting Period: January 1, 2024, to December 31, 2024

Lead	Louisa St W	New	450	3.5	Yes IPZ-3 Thornbury
Lead	Louisa St W	New	300	7.0	Yes IPZ-3 Thornbury
Lead	Louisa St W	New	300	1.5	Yes IPZ-3 Thornbury
Main	Louisa St W	New	300	0.99	Yes IPZ-3 Thornbury
Lead	Louisa St W	New	300	7.1	Yes IPZ-3 Thornbury
Lead	Victoria St S	New	300	2.1	Yes IPZ-3 Thornbury
Lead	Victoria St S	New	300	5.4	Yes IPZ-3 Thornbury
Lead	Louisa St W	New	300	7.4	Yes IPZ-3 Thornbury
Lead	Louisa St W	New	300	0.99	Yes IPZ-3 Thornbury
Main	Beaver St S	New	525	15.9	Yes IPZ-3 Thornbury
Main	Beaver St S	New	525	53.6	Yes IPZ-3 Thornbury
Main	Beaver St S	New	300	88.8	Yes IPZ-3 Thornbury
Lead	Beaver St S	New	300	5.9	Yes IPZ-3 Thornbury
Lead	Beaver St S	New	300	8.9	Yes IPZ-3 Thornbury
Lead	Beaver St S	New	300	7.2	Yes IPZ-3 Thornbury
Lead	Beaver St S	New	300	1.2	Yes IPZ-3 Thornbury
Main	Beaver St S	New	375	7.3	Yes IPZ-3 Thornbury
Main	Beaver St S	New	375	3.0	Yes IPZ-3 Thornbury
Lead	Louisa St W	New	300	17.1	Yes IPZ-3 Thornbury
Lead	Victoria St S	New	300	1.3	Yes IPZ-3 Thornbury
Lead	Victoria St S	New	300	7.2	Yes IPZ-3 Thornbury
Main	Victoria St S	New	300	7.1	Yes IPZ-3 Thornbury
Lead	Victoria St S	New	300	7.7	Yes IPZ-3 Thornbury
Lead	Victoria St S	New	300	1.1	Yes IPZ-3 Thornbury
Lead	Alice St W	New	300	1.7	Yes IPZ-3 Thornbury
Lead	Alice St W	New	300	7.1	Yes IPZ-3 Thornbury
Lead	Victoria St S	New	300	0.9	Yes IPZ-3 Thornbury
Lead	Victoria St S	New	300	6.9	Yes IPZ-3 Thornbury
Lead	Victoria St S	New	300	5.3	Yes IPZ-3 Thornbury
Lead	Victoria St S	New	300	5.6	Yes IPZ-3 Thornbury
Lead	Victoria St S	New	300	5.6	Yes IPZ-3 Thornbury
Lead	Victoria St S	New	300	7.1	Yes IPZ-3 Thornbury
Lead	Victoria St S	New	300	5.4	Yes IPZ-3 Thornbury
Lead	Victoria St S	New	300	1	Yes IPZ-3 Thornbury
Lead	Victoria St S	New	300	6.9	Yes IPZ-3 Thornbury
Main	Victoria St S	New	750	21	Yes IPZ-3 Thornbury
Main	Water Depot	New	750	22.2	Yes IPZ-3 Thornbury
Main	Victoria St S	New	300	76.6	Yes IPZ-3 Thornbury

2024 Annual Performance Report

The Town of the Blue Mountains: The Town of the Blue Mountains Stormwater Management System

Environmental Compliance Approval Number: 111-S701

Reporting Period: January 1, 2024, to December 31, 2024

Main	Victoria St S	New	300	1.09	Yes IPZ-3 Thornbury
Lead	Victoria St S	New	300	4.5	Yes IPZ-3 Thornbury
Lead	Victoria St S	New	150	5	Yes IPZ-3 Thornbury
Lead	Water Depot	New	300	4.6	Yes IPZ-3 Thornbury
Main	Water Depot	New	200	17.9	Yes IPZ-3 Thornbury
Lead	Water Depot	New	300	10.4	Yes IPZ-3 Thornbury
Main	Water Depot	New	200	24.8	Yes IPZ-3 Thornbury
Main	Victoria St S	Removed	450	60.5	Yes IPZ-3 Thornbury
Main	Louisa St W	Removed	600	28.1	Yes IPZ-3 Thornbury
Main	Victoria St S	Removed	600	17.8	Yes IPZ-3 Thornbury
Main	Victoria St S	Removed	450	48.3	Yes IPZ-3 Thornbury
Main	Victoria St S	Removed	450	12.2	Yes IPZ-3 Thornbury
Main	Victoria St S	Removed	600	33.9	Yes IPZ-3 Thornbury
Main	Victoria St S	Removed	600	28.4	Yes IPZ-3 Thornbury
Main	Victoria St S	Removed	450	68.5	Yes IPZ-3 Thornbury
Lead	Victoria St S	Removed	100	5.0	Yes IPZ-3 Thornbury
Lead	Victoria St S	Removed	600	4.4	Yes IPZ-3 Thornbury
Lead	Victoria St S	Removed	450	7.0	Yes IPZ-3 Thornbury
Main	Louisa St W	Removed	450	10.8	Yes IPZ-3 Thornbury
Main	Louisa St W	Removed	450	31.5	Yes IPZ-3 Thornbury
Lead	Victoria St S	Removed	450	11.8	Yes IPZ-3 Thornbury
Lead	Victoria St S	Removed	300	10.7	Yes IPZ-3 Thornbury
Lead	Victoria St S	Removed	300	15.7	Yes IPZ-3 Thornbury
Main	Victoria St S	Removed	450	22.3	Yes IPZ-3 Thornbury
Main	Victoria St S	Removed	450	27.5	Yes IPZ-3 Thornbury
Lead	Ashbury Crt	Assumed	300	9.40	Yes IPZ-3 Thornbury
Lead	Ashbury Crt - Flushing Station Drain	Assumed	100	49.20	Yes IPZ-3 Thornbury
Main	Ashbury Crt	Assumed	300	23.35	Yes IPZ-3 Thornbury
Main	Ashbury Crt	Assumed	300	38.85	Yes IPZ-3 Thornbury
Main	Ashbury Crt	Assumed	300	3.80	Yes IPZ-3 Thornbury
Main	Ashbury Crt	Assumed	300	2.05	Yes IPZ-3 Thornbury
Oil Grit Separator	Ashbury Crt - STC 300 Stormceptor	Assumed	300		Yes IPZ-3 Thornbury
Lead	Deer Lane	Assumed	300		No
Lead	Deer Lane	Assumed	300		No
Lead	Deer Lane	Assumed	300		No
Lead	Deer Lane	Assumed	300		No
Main	Deer Lane	Assumed	375		

2024 Annual Performance Report

The Town of the Blue Mountains: The Town of the Blue Mountains Stormwater Management System

Environmental Compliance Approval Number: 111-S701

Reporting Period: January 1, 2024, to December 31, 2024

Main	Deer Lane	Assumed	375		
Main	Easement Between High Bluff Lane and Timber Lane	Assumed	525	92.5	
Main	Easement Between High Bluff Lane and Timber Lane	Assumed	525	28.0	
Main	Easement Between Timber Lane Cameron Street	Assumed	750	82.9	
Main	Easement Between Timber Lane Cameron Street	Assumed	750	19	
Main	Easement Between Timber Lane Cameron Street	Assumed	1200	72.9	
Lead	Pheasant Run	Assumed	250	8.5	
Lead	Pheasant Run	Assumed	250	8.5	
Lead	Pheasant Run	Assumed	250	8.5	
Main	Pheasant Run	Assumed	300	52	
Main	Pheasant Run	Assumed	300	52.5	
Main	Pheasant Run	Assumed	375	11.9	Yes IPZ-2 Thornbury WTP
Lead	Plum Ridge Circle	Assumed	250	8.5	Yes IPZ-2 Thornbury WTP
Lead	Plum Ridge Circle	Assumed	300	8.5	Yes IPZ-2 Thornbury WTP
Main	Plum Ridge Circle	Assumed	375	17.2	Yes IPZ-2 Thornbury WTP
Main	Plum Ridge Circle	Assumed	300	25.1	Yes IPZ-2 Thornbury WTP
Lead	Timber Ln	Assumed	250	8.0	Yes IPZ-2 Thornbury WTP
Lead	Timber Ln	Assumed	300	8.9	Yes IPZ-2 Thornbury WTP
Lead	Timber Ln	Assumed	250	7.9	Yes IPZ-2 Thornbury WTP
Lead	Timber Ln	Assumed	250	8.0	Yes IPZ-2 Thornbury WTP
Lead	Timber Ln	Assumed	250	7.9	Yes IPZ-2 Thornbury WTP
Lead	Timber Ln	Assumed	375	7.9	Yes IPZ-2 Thornbury WTP
Lead	Timber Ln	Assumed	250	8.0	Yes IPZ-2 Thornbury WTP
Lead	Timber Ln	Assumed	250	7.9	Yes IPZ-2 Thornbury WTP
Lead	Timber Ln	Assumed	250	8	Yes IPZ-2 Thornbury WTP

2024 Annual Performance Report

The Town of the Blue Mountains: The Town of the Blue Mountains Stormwater Management System

Environmental Compliance Approval Number: 111-S701

Reporting Period: January 1, 2024, to December 31, 2024

Lead	Timber Ln	Assumed	250	8	Yes IPZ-2 Thornbury WTP
Lead	Timber Ln	Assumed	375	8.5	Yes IPZ-2 Thornbury WTP
Lead	Timber Ln	Assumed	250	8	Yes IPZ-2 Thornbury WTP
Main	Timber Ln	Assumed	300	19.9	Yes IPZ-2 Thornbury WTP
Main	Timber Ln	Assumed	750	33.9	Yes IPZ-2 Thornbury WTP
Main	Timber Ln	Assumed	750	51.5	Yes IPZ-2 Thornbury WTP
Main	Timber Ln	Assumed	750	60	Yes IPZ-2 Thornbury WTP
Main	Timber Ln	Assumed	525	59.9	Yes IPZ-2 Thornbury WTP
Main	Timber Ln	Assumed	525	60.2	Yes IPZ-2 Thornbury WTP
Main	Timber Ln	Assumed	525	59.9	Yes IPZ-2 Thornbury WTP
Main	Timber Ln	Assumed	525	60	Yes IPZ-2 Thornbury WTP
Main	Timber Ln	Assumed	525	36	Yes IPZ-2 Thornbury WTP
Main	Timber Ln	Assumed	750	24.5	Yes IPZ-2 Thornbury WTP
Main	Timber Ln	Assumed	450	60.2	Yes IPZ-2 Thornbury WTP
Main	Timber Ln	Assumed	525	97.4	Yes IPZ-2 Thornbury WTP
Main	Timber Ln	Assumed	750	66.5	Yes IPZ-2 Thornbury WTP
Main	Timber Ln	Assumed	300	36	Yes IPZ-2 Thornbury WTP
Oil Grit Separator	Pheasant Run	Assumed	VORTECHS 4,000		Yes IPZ-2 Thornbury WTP
Oil Grit Separator	Timber Lane	Assumed	VORTECHS 16,000		Yes IPZ-2 Thornbury WTP
Lead	Sladden Crt	Assumed	300	9.1	No
Lead	Sladden Crt	Assumed	300	8.6	No
Main	Sladden Crt	Assumed	375	6.1	No
Lead	Sladden Crt	Assumed	300	10.3	No
Lead	Sladden Crt	Assumed	300	8.5	No
Lead	Sladden Crt	Assumed	730 x 1150	8.7	No
Lead	Sladden Crt	Assumed	300	8.5	No
Main	Sladden Crt	Assumed	300	67.6	No
Main	Sladden Crt	Assumed	300	30.9	No
Main	Sladden Crt	Assumed	300	30.9	No

2024 Annual Performance Report

The Town of the Blue Mountains: The Town of the Blue Mountains Stormwater Management System

Environmental Compliance Approval Number: 111-S701

Reporting Period: January 1, 2024, to December 31, 2024

Main	Sladden Crt	Assumed	450	30.9	No
Main	Sladden Crt	Assumed	525	56.1	No
Main	Sladden Crt	Assumed	600	66.4	No
Main	Sladden Crt	Assumed	675	26.3	No
Main	Sladden Crt	Assumed	675	34.9	No
Main	Sladden Crt	Assumed	675	17	No
Lead	West Ridge Dr	Assumed	300	7.8	No
Lead	West Ridge Dr	Assumed	1150	10.8	No
Lead	West Ridge Dr	Assumed	300	8.5	No
Lead	West Ridge Dr	Assumed	300	18.1	No
Lead	West Ridge Dr	Assumed	300	9.1	No
Lead	West Ridge Dr	Assumed	300	8.5	No
Lead	West Ridge Dr	Assumed	300	8.5	No
Main	West Ridge Dr	Assumed	600	29.6	No
Main	West Ridge Dr	Assumed	600	34	No
Main	West Ridge Dr	Assumed	600	32.5	No
Main	West Ridge Dr	Assumed	600	50.5	No
Main	West Ridge Dr	Assumed	600	30.9	No
Main	West Ridge Dr	Assumed	600	32.5	No
Main	West Ridge Dr	Assumed	600	32.8	No
Main	West Ridge Dr	Assumed	730 x 1150	23.3	No
Main	West Ridge Dr	Assumed	730 x 1150	25.5	No
Main	West Ridge Dr	Assumed	855 x 1345	31.7	No
Main	West Ridge Dr	Assumed	600	7.00	No

8. A summary of all spills or abnormal discharge events

For the reporting period the Town was notified of two oil spills.

- a. Oil spill- In the vicinity Delphi point and Highway 26, July 29, 2024
This event was responded to by the Grey County and MTO response team
- b. Diesel spill – Town of the Blue Mountains, October 17, 2024
This event was responded to by the Town of the Blue Mountains Roads and Drainage staff

9. Status of Actions for Previous Years

Schedule E, Section 5.2.11 of the CLI-ECA requires a summary of the status of actions for the previous reporting year.

For the reporting period January - December of 2023 the Town's staff were able to compile its Facility Maintenance Manual as required by the Environmental Compliance Approval. This document was then used as the guidelines for all the inspection and maintenance requirements of the Municipal Storm Water Management System (SWM) owned and operated by the Town of The Blue Mountains. Along side the inspection and maintenance activities for the SWM, influent/effluent water quality analysis was conducted for the stormwater ponds during the wet season.

The Town of The Blue Mountains also undertook the development of its Drainage Master Plan to serve as a long-term strategy for the Town to manage stormwater in existing and new growth areas. A recommendation of the Drainage Master Plan is to calibrate the major drainage system hydrologic model used to design the Town's drainage infrastructure. The Town initiated a streamflow monitoring program in the spring of 2024 to collect the necessary data to complete the hydrologic model calibration and model calibration is scheduled for 2025.

2024 Annual Performance Report

The Town of the Blue Mountains: The Town of the Blue Mountains Stormwater Management System

Environmental Compliance Approval Number: 111-S701

Reporting Period: January 1, 2024, to December 31, 2024

Appendix A- Performance Assessment Report for Oil grit separators



INSPECTION #10

I.D.#: 000032_1/2

TOWN OF THE BLUE MOUNTAINS
ATTN: JIM MCCANNELL
32 MILL STREET, P.O. BOX 310
THORNBURY, ONTARIO, CANADA
N0H 2P0

CC: JIM MCCANNELL

INSPECTION AUTHORIZATION: ANNUAL MONITORING AGREEMENT

SITE:		JOB #P01830
TOWN HALL PARKING LOT		LOC'N #:
32 MILL STREET		SERIAL #: UNKNOWN
THORNBURY, ONTARIO, CANADA		MODEL #: CDS-UNKNOWN1
44° 33.72 N / 80° 26.98 W		ORDER DATE:
		CLASS: 40
		CODE: H
SPECIFIC LOCATION:		
RIGHT HAND SIDE OF PARKING LOT OF MILL ST. IN FRONT OF 7TH PARKING SPACE.		
INSPECTION DATE: MAY 29, 2023		
SILT		
READING: 303 mm / 12 in	ALLOWABLE: 455 mm / 18 in	SERVICE REQUIRED: NO
HYDROCARBON		
READING: ZERO	ALLOWABLE: ZERO	SERVICE REQUIRED: NO
INLET CLEAR OF DEBRIS: YES	STANDING WATER ON INSERT: ZERO	INFLOW WHEN NOT RAINING: NO
COMMENTS:		
NO SERVICE IS REQUIRED AT THIS TIME.		
NOTE: THIS INSPECTION COMPLETES THE MONITORING AGREEMENT.		
INSPECTOR: COLBY JACKSON		

PREVIOUS INSPECTION: JUN 14, 2022 SILT READING: 303 mm / 12 in HYDROCARBON READING: ZERO

LAST SERVICE DATE: N/A

NEXT INSPECTION REQUIRED: 2ND QUARTER OF 2024

NEXT INSPECTION AUTHORIZED BY: CUSTOMER PURCHASE ORDER REQUIRED

RETAIN THIS REPORT ON FILE TO COMPLY WITH LOCAL AND PROVINCIAL REGULATIONS

MINOTAUR STORMWATER SERVICES LIMITED ~ 566 LYNDEN RD. ~ BRANTFORD, ON ~ N3T 5M1
PHONE 519 647-3729 ~ FAX 519 647-3198 ~ EMAIL service@minotaur.ca ~ WEB www.minotaur ltd.com

2024 Annual Performance Report

The Town of the Blue Mountains: The Town of the Blue Mountains Stormwater Management System

Environmental Compliance Approval Number: 111-S701

Reporting Period: January 1, 2024, to December 31, 2024

Appendix B: Facility Work Order Summary

Cityworks

Sea

Inbox ▾Work Order ▾Inspections ▾Assets ▾Reports

Work Order

Open Selected

Open In ELM

Calendar

Map View

WO Frequency

WO Entities

Data ▾

Map ▾

Refresh

Drag a column header and drop it here to group by that column

<input type="checkbox"/>	WorkOrderId	Description	Priority	Status	Submit To	Proj Start Date ▾	Proj Finish Date
<input type="checkbox"/>	7029	Town CCTV Inspection	2	OPEN		11/6/2024 10:50	11/8/2024 10:50
<input type="checkbox"/>	7016	Town CCTV Inspection	2	OPEN		09/6/2024 02:43	09/9/2024 02:43
<input type="checkbox"/>	6766	Storm Culvert- Driveway		ON HOLD		06/1/2024 12:00	06/1/2024 12:00
<input type="checkbox"/>	6937	Storm Culvert Replacement		CLOSED		05/27/2024 12:00	05/27/2024 12:00
<input type="checkbox"/>	6934	Drainage Ditch Maintenance		CLOSED		05/23/2024 10:01	05/23/2024 10:01
<input type="checkbox"/>	6932	Drainage Ditch Maintenance		CLOSED		05/23/2024 08:52	05/23/2024 08:52
<input type="checkbox"/>	6931	Storm Structure Repair		CLOSED		05/22/2024 10:24	05/22/2024 10:24
<input type="checkbox"/>	6930	Storm Structure Maintenance		CLOSED		05/22/2024 10:08	05/22/2024 10:08
<input type="checkbox"/>	6793	Storm Line Maintenance		CLOSED		10/25/2023 09:35	10/25/2023 09:35

Appendix C: Stormwater Asset Work Order Tracker



Town of the Blue Mountains
Roads and Drainage Operations Department
Stormwater Asset Work Order Tracker

TBM Asset	Condition/Issues	Worker order date	Status	Follow-up Actions
Dry Pond- Alexandra way	Grass cutting and garbage removal	Nov. 28, 2023	Closed	
Arnot Cresent - Wet Pond	Grass cutting and garbage removal	June 12, 2024	Closed	
Guardrail	Rotted wooden posts	Nov 29,2023	Open	
Stormwater Ponds	Update Signage	July 12, 2024	Closed	
Wet Pond - Creekwood	Remove Garbage from outlet	November 8, 2024	Closed	
Ditch outlets	Clear debris from ditch outlet	September 16, 2024	Open	Permit application
Ditch outlet	Repair CSP pipe	September 16, 2024	Closed	
Long Point drain	Cleanout	September 16, 2024	Open	Permit application

2024 Annual Performance Report

The Town of the Blue Mountains: The Town of the Blue Mountains Stormwater Management System

Environmental Compliance Approval Number: 111-S701

Reporting Period: January 1, 2024, to December 31, 2024

Appendix D: Certificate of Analysis of Stormwater ponds

SGS
SGS Canada Inc.
P.O. Box 4300 - 185 Concession St.
Lakefield - Ontario - K0L 2H0
Phone: 705-652-2000 FAX: 705-652-6365

Town of the Blue Mountains
Attn : Marco Hinds

32 Mill Street, PO Box 310
Thornbury, ON
N0H 2P0, Canada

Phone: 519-599-3131 ext 238
Fax:pdf

04-June-2024

Date Rec. : 29 May 2024
LR Report: CA15965-MAY24
Reference: Stormwater Ponds

Copy: #1

CERTIFICATE OF ANALYSIS Final Report

Analysis	1: Analysis Start Date	2: Analysis Start Time	3: Analysis Approval Date	4: Analysis Approval Time	5: PWQO Limits	6: Creekwood Outlet	7: Creekwood Inlet	8: Arnot Cresent Outlet	9: Arnot Cresent Inlet
Sample Date & Time						27-May-24 09:05	27-May-24 09:05	27-May-24 08:25	27-May-24 08:25
Sampled By						Marco Hinds	Marco Hinds	Marco Hinds	Marco Hinds
Temperature Upon Receipt [°C]	---	---	---	---	---	9.0	9.0	9.0	9.0
Total Suspended Solids [mg/L]	01-Jun-24	11:31	03-Jun-24	11:39	---	17	28	8	65
Biochemical Oxygen Demand (BOD5) [mg/L]	30-May-24	15:47	04-Jun-24	10:33	---	9	< 12	5	< 4
Chemical Oxygen Demand [mg/L]	30-May-24	11:34	04-Jun-24	10:35	---	41	17	31	15
Total Kjeldahl Nitrogen [as N mg/L]	30-May-24	16:04	03-Jun-24	10:43	---	1.2	1.0	1.2	0.9
Mercury (total) [mg/L]	31-May-24	17:30	03-Jun-24	08:15	0.0002	< 0.00001	< 0.00001	< 0.00001	< 0.00001
Hardness [mg/L as CaCO3]	31-May-24	17:10	03-Jun-24	08:15	---	125	237	106	118
Silver (total) [mg/L]	31-May-24	17:10	03-Jun-24	08:15	0.0001	< 0.00005	< 0.00005	< 0.00005	< 0.00005
Arsenic (total) [mg/L]	31-May-24	17:10	03-Jun-24	08:15	0.005	0.0008	0.0014	0.0007	0.0014
Barium (total) [mg/L]	31-May-24	17:10	03-Jun-24	08:15	---	0.0110	0.0715	0.00753	0.0216
Boron (total) [mg/L]	31-May-24	17:10	03-Jun-24	08:15	0.2	0.017	0.084	0.014	0.112
Beryllium (total) [mg/L]	31-May-24	17:10	03-Jun-24	08:15	1.1	< 0.000007	0.000025	< 0.000007	0.000054
Cobalt (total) [mg/L]	31-May-24	17:10	03-Jun-24	08:15	0.0009	0.000233	0.000401	0.000327	0.000825
Cadmium (total) [mg/L]	31-May-24	17:10	03-Jun-24	08:15	0.0002	0.000013	0.000008	0.000024	0.000008
Calcium (total) [mg/L]	31-May-24	17:10	03-Jun-24	08:15	---	39.4	66.5	33.7	21.8
Chromium (total) [mg/L]	31-May-24	17:10	03-Jun-24	08:15	0.001	0.00034	0.00069	0.00048	0.00139
Copper (total) [mg/L]	31-May-24	17:10	03-Jun-24	08:15	0.005	0.002	0.001	0.004	0.002

Page 1 of 2

Results relate only to the sample tested. Data reported represents the sample submitted to SGS. Reproduction of this analytical report in full or in part is prohibited without prior written approval. Please refer to SGS General Conditions of Services located at <https://www.sgs.ca/en/terms-and-conditions> (Printed copies are available upon request.)
Test method information available upon request. "Temperature Upon Receipt" is representative of the whole shipment and may not reflect the temperature of individual samples.
SGS Canada Inc. Environment-Health & Safety statement of conformity decision rule does not consider uncertainty when analytical results are compared to a specified standard or regulation.

04-JUNE-2024

2024 Annual Performance Report

The Town of the Blue Mountains: The Town of the Blue Mountains Stormwater Management System

Environmental Compliance Approval Number: 111-S701

Reporting Period: January 1, 2024, to December 31, 2024

SGS
SGS Canada Inc.
P.O. Box 4300 - 185 Concession St.
Lakefield - Ontario - K0L 2H0
Phone: 705-652-2000 FAX: 705-652-8365

LR Report : CA15965-MAY24

Analysis	1: Analysis Start Date	2: Analysis Start Time	3: Analysis Approval Date	4: Analysis Approval Time	5: PWQO Limits	6: Creekwood Outlet	7: Creekwood Inlet	8: Arnot Crescent Outlet	9: Arnot Crescent Inlet
Iron (total) [mg/L]	31-May-24	17:10	03-Jun-24	08:15	0.3	0.308	0.888	0.313	1.58
Lead (total) [mg/L]	31-May-24	17:10	03-Jun-24	08:15	0.001	0.00020	0.00027	0.00037	0.00042
Magnesium (total) [mg/L]	31-May-24	17:10	03-Jun-24	08:15	---	8.50	17.2	5.32	15.5
Manganese (total) [mg/L]	31-May-24	17:10	03-Jun-24	08:15	---	0.0521	0.0939	0.0453	0.0765
Molybdenum (total) [mg/L]	31-May-24	17:10	03-Jun-24	08:15	---	< 0.0004	0.0005	0.0004	< 0.0004
Phosphorus (total) [mg/L]	31-May-24	17:10	03-Jun-24	08:15	0.02	0.074	0.044	0.050	0.055
Potassium (total) [mg/L]	31-May-24	17:10	03-Jun-24	08:15	---	4.81	2.52	2.41	2.28
Sodium (total) [mg/L]	31-May-24	17:10	03-Jun-24	08:15	---	22.3	28.6	16.1	29.3
Nickel (total) [mg/L]	31-May-24	17:10	03-Jun-24	08:15	---	0.0011	0.0015	0.0013	0.0023
Antimony (total) [mg/L]	31-May-24	17:10	03-Jun-24	08:15	---	< 0.0009	< 0.0009	< 0.0009	< 0.0009
Selenium (total) [mg/L]	31-May-24	17:10	03-Jun-24	08:15	---	0.00015	0.00012	0.00016	0.00012
Thallium (total) [mg/L]	31-May-24	17:10	03-Jun-24	08:15	---	< 0.000005	< 0.000005	< 0.000005	0.000010
Vanadium (total) [mg/L]	31-May-24	17:10	03-Jun-24	08:15	---	0.00058	0.00107	0.00152	0.00187
Zinc (total) [mg/L]	31-May-24	17:10	03-Jun-24	08:15	0.02	0.005	0.004	0.008	0.008

PWQO - Provincial Water Quality Objectives


Carrie Greenlaw
Project Specialist,
Environment, Health & Safety

Online LIMS

Page 2 of 2

Results relate only to the sample tested. Data reported represents the sample submitted to SGS. Reproduction of this analytical report in full or in part is prohibited without prior written approval. Please refer to SGS General Conditions of Services located at <https://www.sgs.ca/en/terms-and-conditions> (Printed copies are available upon request.)
Test method information available upon request. "Temperature Upon Receipt" is representative of the whole shipment and may not reflect the temperature of individual samples.
SGS Canada Inc. Environment-Health & Safety statement of conformity decision rule does not consider uncertainty when analytical results are compared to a specified standard or regulation.

06/EE/2000