

REMOVAL NOTES

- EXISTING UTILITY INFORMATION HAS BEEN COMPILED FROM AS-BUILT/RECORD DRAWINGS PROVIDED FOR INFORMATION ONLY. CONTRACTOR TO VERIFY ACTUAL LOCATIONS AND DEPTHS OF UTILITIES AND ADVISE ENGINEER IMMEDIATELY OF CONFLICTS OR DISCREPANCIES WHEN IDENTIFIED.
- REMOVALS FOR THE PURPOSE OF CLEANOUT INSTALLATIONS SHALL ONLY BE COMPLETED AFTER LOCATIONS OF SANITARY SERVICES HAVE BEEN CONFIRMED IN THE FIELD.
- REMOVE AND/OR SALVAGE (AS NOTED IN THE CONTRACT DOCUMENT) ALL SURFACE FEATURES WITHIN SHADED AREA AS NECESSARY, UNLESS OTHERWISE NOTED. REMOVALS MAY ONLY EXTEND BEYOND LIMITS SHOWN AT THE DIRECTION OF THE ENGINEER.
- ALL HYDRO POLES, GUY WIRES, UTILITY BOXES, TREES, HEDGES AND SHRUBS SHALL REMAIN AND BE PROTECTED/SUPPORTED DURING CONSTRUCTION, UNLESS OTHERWISE NOTED OR DIRECTED BY THE ENGINEER.
- INFORMATION ON EXISTING SANITARY SERVICES WITHIN THE LIMITS OF CONSTRUCTION HAS BEEN COMPILED FROM AS-BUILT/RECORD DRAWINGS PROVIDED FOR INFORMATION. CONTRACTOR TO DETERMINE AND VERIFY LOCATION, ALIGNMENT, DEPTH, TYPE AND DIAMETER OF ALL SANITARY SERVICES WITHIN THE LIMITS OF CONSTRUCTION WHERE APPLICABLE. EACH SANITARY SERVICE WITHIN THE PROJECT LIMITS SHALL HAVE A NEW CLEANOUT INSTALLED.
- CONTRACTOR TO REMOVE AND SALVAGE TRAFFIC SIGNS IN ACCORDANCE WITH THE APPROVED TRAFFIC CONTROL PLAN, ONCE ALTERNATIVE AND/OR TEMPORARY MEASURES ARE IN PLACE TO ENSURE SAFETY.
- CONTRACTOR TO MARK ALL TREES FOR REMOVAL WITH CONTRACT ADMINISTRATOR PRIOR TO REMOVAL.
- CONTRACTOR SHALL TAKE MEASURES TO PROTECT EXISTING SIDEWALK THAT IS NOT IDENTIFIED TO BE REMOVED AND REPLACED.

REMOVAL LEGEND

- AREA OF SURFACE FEATURE REMOVAL
- CLEARING AND GRUBBING
- TREE PROTECTION FENCE
- MINIMUM LIMIT OF WORK
- ITEM TO BE REMOVED OR SALVAGED

DISCLAIMER AND COPYRIGHT

CONTRACTOR MUST VERIFY ALL DIMENSIONS AND BE RESPONSIBLE FOR SAME. ANY DISCREPANCIES MUST BE REPORTED TO THE ENGINEER BEFORE COMMENCING WORK. DRAWINGS ARE NOT TO BE SCALED.

TATHAM ENGINEERING LIMITED CLAIMS COPYRIGHT TO THIS DRAWING WHICH MAY NOT BE USED FOR ANY PURPOSE OTHER THAN THAT PROVIDED IN THE CONTRACT BETWEEN THE OWNER/CLIENT AND THE ENGINEER WITHOUT THE EXPRESS CONSENT OF TATHAM ENGINEERING LIMITED.

BENCHMARKS

NOTES

No.	REVISION DESCRIPTION	DATE	ENGINEER STAMP
1.	60% DESIGN SUBMISSION	OCT 2024	<div>PRELIMINARY</div>
2.	75% DESIGN SUBMISSION	DRAFT	

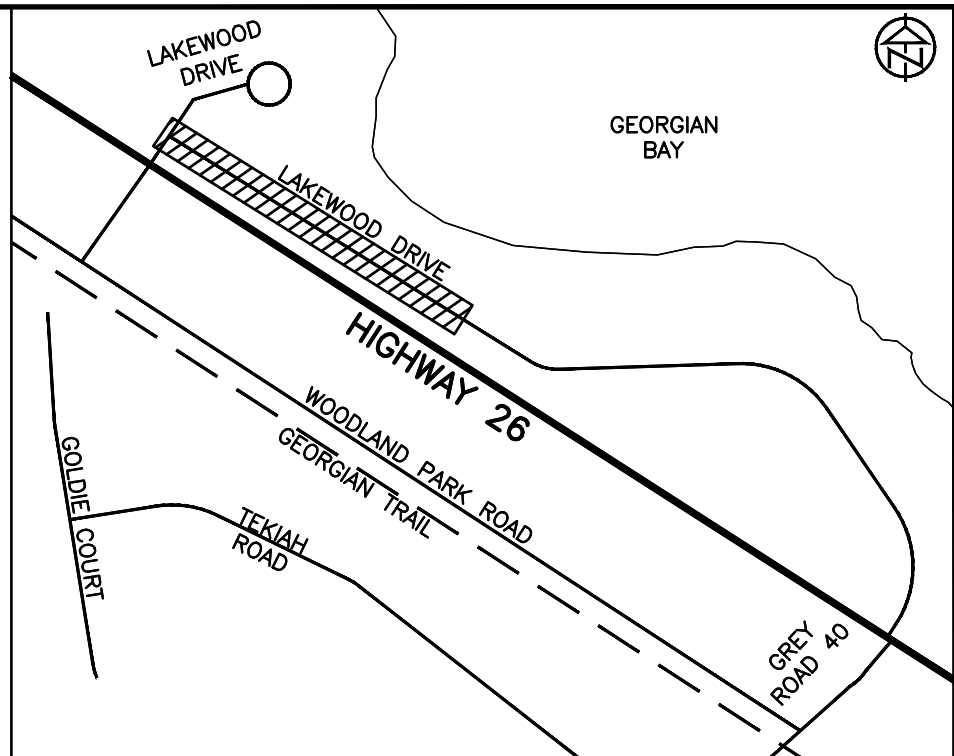
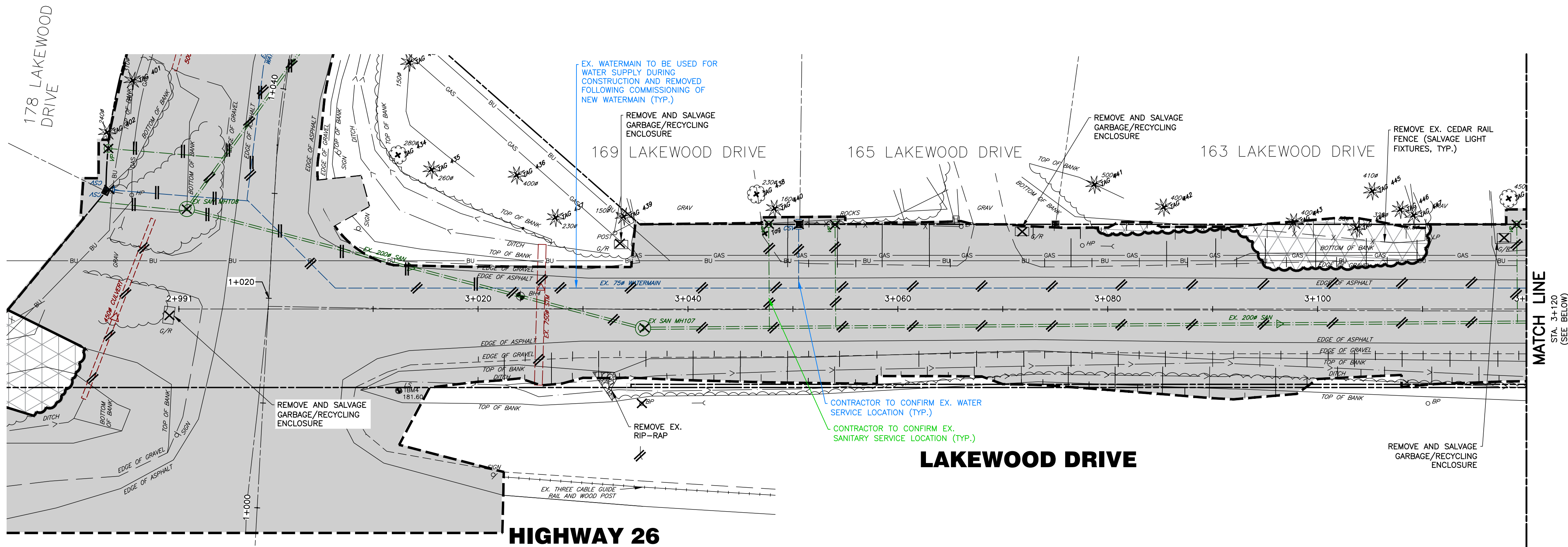
LAKWOOD DRIVE RECONSTRUCTION  
TOWN OF THE BLUE MOUNTAINS  
202#-##-T-OPS

REMOVALS PLAN  
HIGHWAY 26  
STA. 1+930 TO 2+040

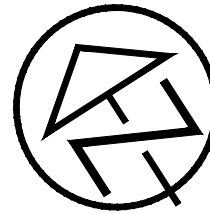


DESIGN: MS	FILE: 122152	DWG: RM.1
DRAWN: JK/NB	DATE: JUNE 2022	
CHECK: AEB	SCALE: 1:250	Sheet No. 3 of 33



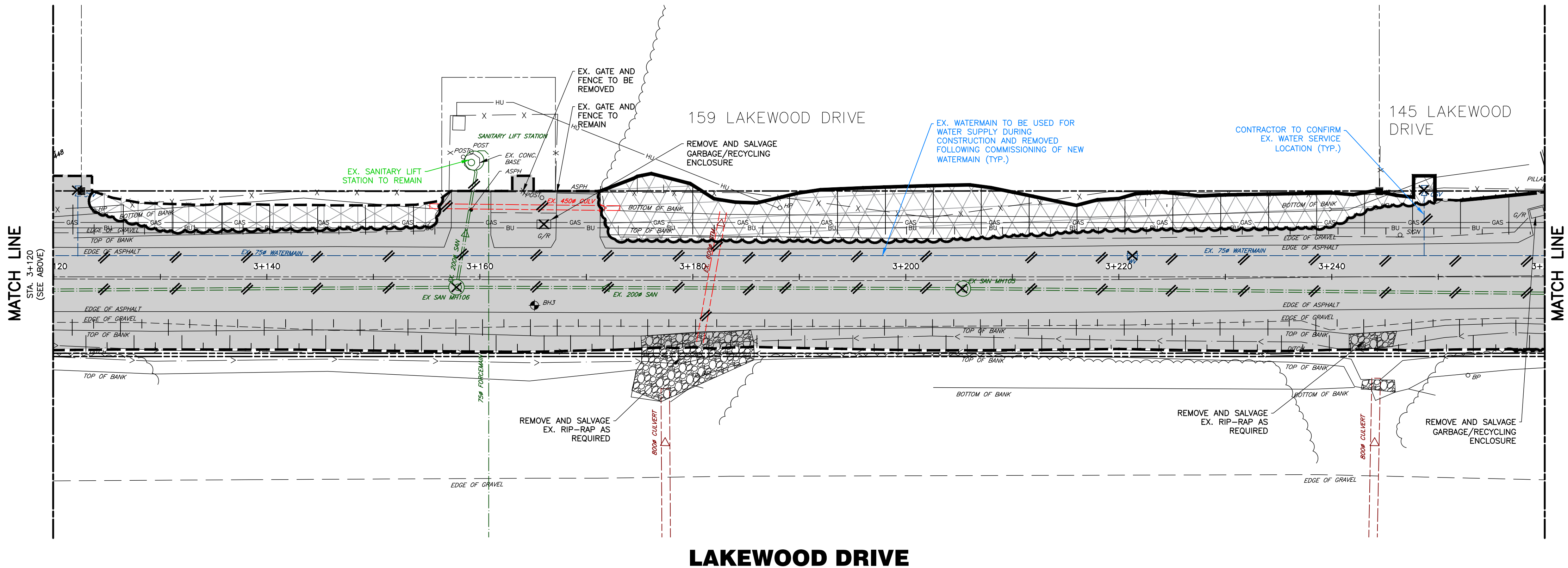


KEY PLAN



REMOVAL NOTES

1. EXISTING UTILITY INFORMATION HAS BEEN COMPILED FROM AS-BUILT/RECORD DRAWINGS PROVIDED FOR INFORMATION ONLY. CONTRACTOR TO VERIFY ACTUAL LOCATIONS AND DEPTHS OF UTILITIES AND ADVISE ENGINEER IMMEDIATELY OF CONFLICTS OR DISCREPANCIES WHEN IDENTIFIED.
2. REMOVALS FOR THE PURPOSE OF CLEANOUT INSTALLATIONS SHALL ONLY BE COMPLETED AFTER LOCATIONS OF SANITARY SERVICES HAVE BEEN CONFIRMED IN THE FIELD.
3. REMOVE AND/OR SALVAGE (AS NOTED IN THE CONTRACT DOCUMENT) ALL SURFACE FEATURES WITHIN SHADED AREA AS NECESSARY, UNLESS OTHERWISE NOTED. REMOVALS MAY ONLY EXTEND BEYOND LIMITS SHOWN AT THE DIRECTION OF THE ENGINEER.
4. ALL HYDRO POLES, GUY WIRES, UTILITY BOXES, TREES, HEDGES AND SHRUBS SHALL REMAIN AND BE PROTECTED/SUPPORTED DURING CONSTRUCTION, UNLESS OTHERWISE NOTED OR DIRECTED BY THE ENGINEER.
5. INFORMATION ON EXISTING SANITARY SERVICES WITHIN THE LIMITS OF CONSTRUCTION HAS BEEN COMPILED FROM AS-BUILT/RECORD DRAWINGS PROVIDED FOR INFORMATION. CONTRACTOR TO DETERMINE AND VERIFY LOCATION, ALIGNMENT, DEPTH, TYPE AND DIAMETER OF ALL SANITARY SERVICES WITHIN THE LIMITS OF CONSTRUCTION WHERE APPLICABLE. EACH SANITARY SERVICE WITHIN THE PROJECT LIMITS SHALL HAVE A NEW CLEANOUT INSTALLED.
6. CONTRACTOR TO REMOVE AND SALVAGE TRAFFIC SIGNS IN ACCORDANCE WITH THE APPROVED TRAFFIC CONTROL PLAN, ONCE ALTERNATIVE AND/OR TEMPORARY MEASURES ARE IN PLACE TO ENSURE SAFETY.
7. CONTRACTOR TO MARK ALL TREES FOR REMOVAL WITH CONTRACT ADMINISTRATOR PRIOR TO REMOVAL.
8. CONTRACTOR SHALL TAKE MEASURES TO PROTECT EXISTING SIDEWALK THAT IS NOT IDENTIFIED TO BE REMOVED AND REPLACED.



REMOVAL LEGEND

- AREA OF SURFACE FEATURE REMOVAL
- CLEARING AND GRUBBING
- TREE PROTECTION FENCE
- MINIMUM LIMIT OF WORK
- ITEM TO BE REMOVED OR SALVAGED

**DISCLAIMER AND COPYRIGHT**  
CONTRACTOR MUST VERIFY ALL DIMENSIONS AND BE RESPONSIBLE FOR SAME. ANY DISCREPANCIES MUST BE REPORTED TO THE ENGINEER BEFORE COMMENCING WORK. DRAWINGS ARE NOT TO BE SCALED.  
TATHAM ENGINEERING LIMITED CLAIMS COPYRIGHT TO THIS DRAWING WHICH MAY NOT BE USED FOR ANY PURPOSE OTHER THAN THAT PROVIDED IN THE CONTRACT BETWEEN THE OWNER/CLIENT AND THE ENGINEER WITHOUT THE EXPRESS CONSENT OF TATHAM ENGINEERING LIMITED.

BENCHMARKS

**NOTES**  
PIPE SIZES ARE IN MILLIMETRES UNLESS OTHERWISE INDICATED. ELEVATIONS ARE IN METRES UNLESS INDICATED. ALL DIMENSIONS, ELEVATIONS AND SIZES ARE IN METRIC UNITS UNLESS INDICATED.  
LEGAL SURVEY IS OBTAINED FROM ZUBEK, EMO, PATTEN & THOMSEN LIMITED ON SEPTEMBER 9, 2022 FOR LAKEWOOD DRIVE. PARCEL INFORMATION FOR GREY ROAD 40 IS BASED ON TOWN OF THE BLUE MOUNTAIN'S INTERACTIVE MAP AND INTEGRATED USING SITE FEATURES. THE ACCURACY OF THE PARCEL IS NOT GUARANTEED AND THEREFORE APPROXIMATE.

No.	REVISION DESCRIPTION	DATE
1.	60% DESIGN SUBMISSION	OCT 2024
2.	75% DESIGN SUBMISSION	DRAFT

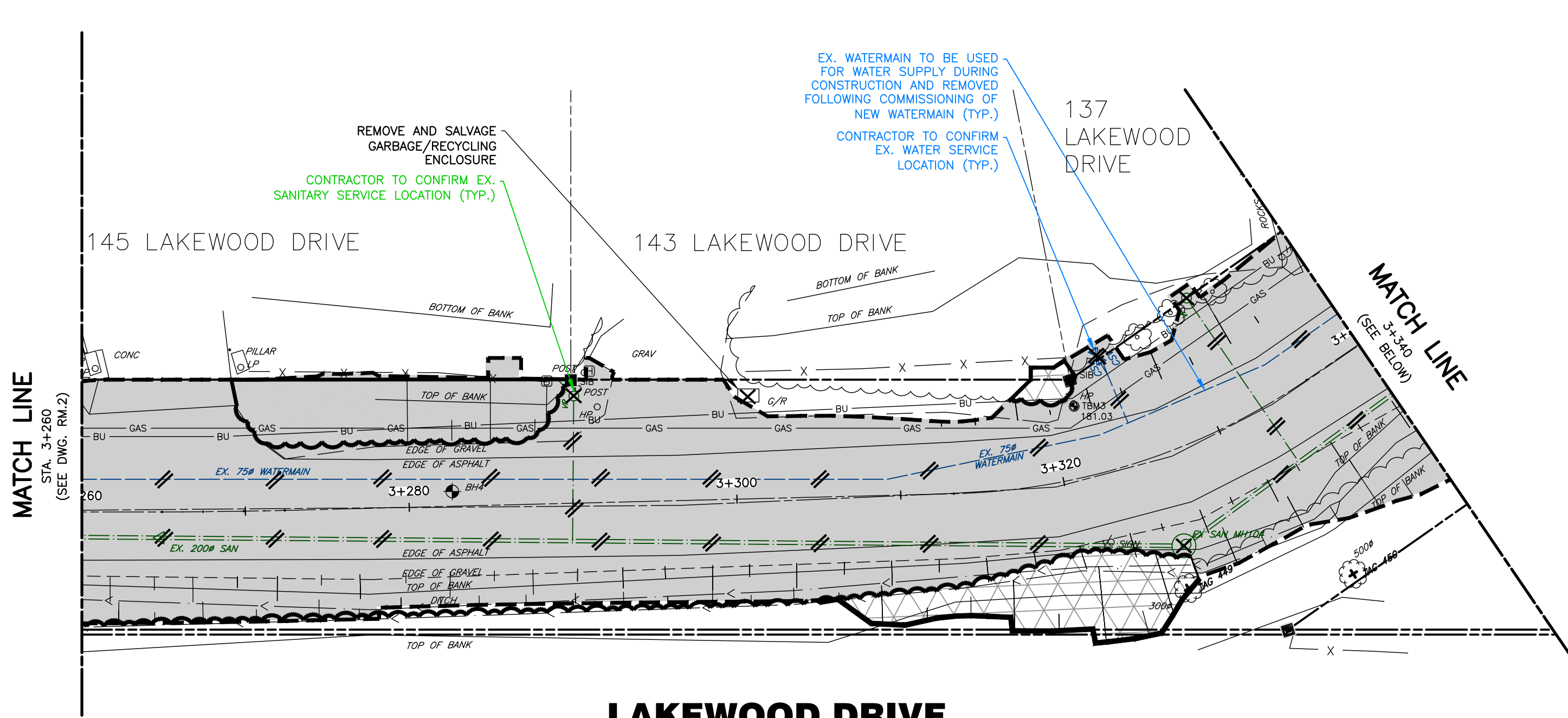
ENGINEER STAMP

**PRELIMINARY**

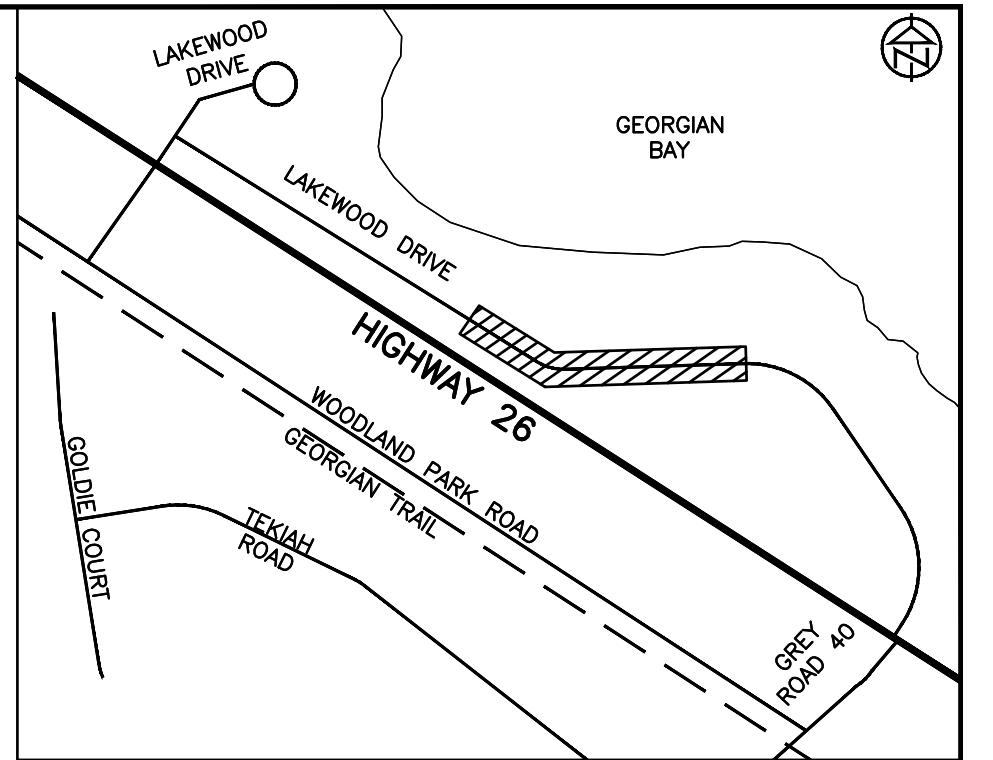
**LAKWOOD DRIVE RECONSTRUCTION**  
**TOWN OF THE BLUE MOUNTAINS**  
**202#-##-T-OPS**  
**REMOVAL PLAN**  
**LAKWOOD DRIVE**  
**STA. 2+990 TO 3+260**

DESIGN: MS	FILE: 122152	DWG: <b>RM.2</b>
DRAWN: JK/NB	DATE: JUNE 2022	
CHECK: AEB	SCALE: 1:250 H 1:50 V	Sheet No. 4 of 33

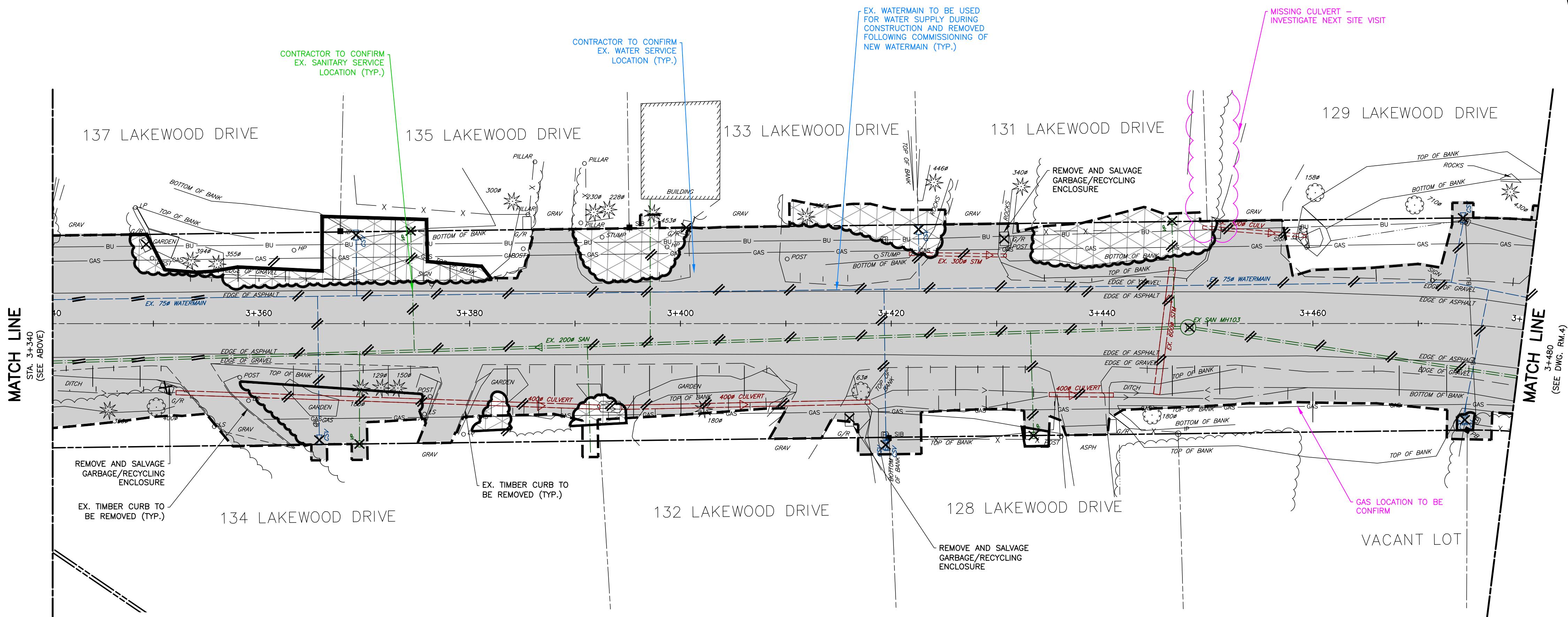




LAKEWOOD DRIVE



KEY PLAN



LAKEWOOD DRIVE

REMOVAL NOTES

1. EXISTING UTILITY INFORMATION HAS BEEN COMPILED FROM AS-BUILT/RECORD DRAWINGS PROVIDED FOR INFORMATION ONLY. CONTRACTOR TO VERIFY ACTUAL LOCATIONS AND DEPTHS OF UTILITIES AND ADVISE ENGINEER IMMEDIATELY OF CONFLICTS OR DISCREPANCIES WHEN IDENTIFIED.
2. REMOVALS FOR THE PURPOSE OF CLEANOUT INSTALLATIONS SHALL ONLY BE COMPLETED AFTER LOCATIONS OF SANITARY SERVICES HAVE BEEN CONFIRMED IN THE FIELD.
3. REMOVE AND/OR SALVAGE (AS NOTED IN THE CONTRACT DOCUMENT) ALL SURFACE FEATURES WITHIN SHADED AREA AS NECESSARY, UNLESS OTHERWISE NOTED. REMOVALS MAY ONLY EXTEND BEYOND LIMITS SHOWN AT THE DIRECTION OF THE ENGINEER.
4. ALL HYDRO POLES, GUY WIRES, UTILITY BOXES, TREES, HEDGES AND SHRUBS SHALL REMAIN AND BE PROTECTED/SUPPORTED DURING CONSTRUCTION, UNLESS OTHERWISE NOTED OR DIRECTED BY THE ENGINEER.
5. INFORMATION ON EXISTING SANITARY SERVICES WITHIN THE LIMITS OF CONSTRUCTION HAS BEEN COMPILED FROM AS-BUILT/RECORD DRAWINGS PROVIDED FOR INFORMATION. CONTRACTOR TO DETERMINE AND VERIFY LOCATION, ALIGNMENT, DEPTH, TYPE AND DIAMETER OF ALL SANITARY SERVICES WITHIN THE LIMITS OF CONSTRUCTION WHERE APPLICABLE. EACH SANITARY SERVICE WITHIN THE PROJECT LIMITS SHALL HAVE A NEW CLEANOUT INSTALLED.
6. CONTRACTOR TO REMOVE AND SALVAGE TRAFFIC SIGNS IN ACCORDANCE WITH THE APPROVED TRAFFIC CONTROL PLAN, ONCE ALTERNATIVE AND/OR TEMPORARY MEASURES ARE IN PLACE TO ENSURE SAFETY.
7. CONTRACTOR TO MARK ALL TREES FOR REMOVAL WITH CONTRACT ADMINISTRATOR PRIOR TO REMOVAL.
8. CONTRACTOR SHALL TAKE MEASURES TO PROTECT EXISTING SIDEWALK THAT IS NOT IDENTIFIED TO BE REMOVED AND REPLACED.

REMOVAL LEGEND

- AREA OF SURFACE FEATURE REMOVAL
- CLEARING AND GRUBBING
- TREE PROTECTION FENCE
- MINIMUM LIMIT OF WORK
- ITEM TO BE REMOVED OR SALVAGED

DISCLAIMER AND COPYRIGHT

CONTRACTOR MUST VERIFY ALL DIMENSIONS AND BE RESPONSIBLE FOR SAME. ANY DISCREPANCIES MUST BE REPORTED TO THE ENGINEER BEFORE COMMENCING WORK. DRAWINGS ARE NOT TO BE SCALED.

TATHAM ENGINEERING LIMITED CLAIMS COPYRIGHT TO THIS DRAWING WHICH MAY NOT BE USED FOR ANY PURPOSE OTHER THAN THAT PROVIDED IN THE CONTRACT BETWEEN THE OWNER/CLIENT AND THE ENGINEER WITHOUT THE EXPRESS CONSENT OF TATHAM ENGINEERING LIMITED.

BENCHMARKS

NOTES

PIPE SIZES ARE IN MILLIMETRES UNLESS OTHERWISE INDICATED. ELEVATIONS ARE IN METRES UNLESS INDICATED. ALL DIMENSIONS, ELEVATIONS AND SIZES ARE IN METRIC UNITS UNLESS INDICATED.

LEGAL SURVEY IS OBTAINED FROM ZUBEK, EMO, PATTEN & THOMSEN LIMITED ON SEPTEMBER 9, 2022 FOR LAKEWOOD DRIVE. PARCEL INFORMATION FOR GREY ROAD 40 IS BASED ON TOWN OF THE BLUE MOUNTAIN'S INTERACTIVE MAP AND INTEGRATED USING SITE FEATURES. THE ACCURACY OF THE PARCEL IS NOT GUARANTEED AND THEREFORE APPROXIMATE.

No.	REVISION DESCRIPTION	DATE	ENGINEER STAMP
1.	60% DESIGN SUBMISSION	OCT 2024	
2.	75% DESIGN SUBMISSION	DRAFT	

PRELIMINARY

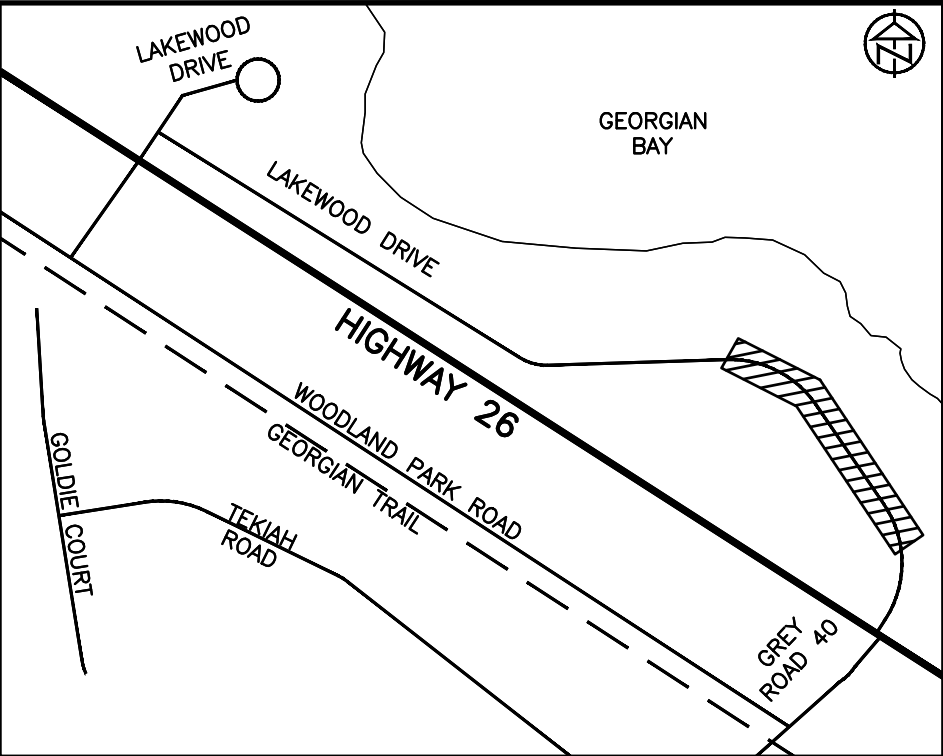
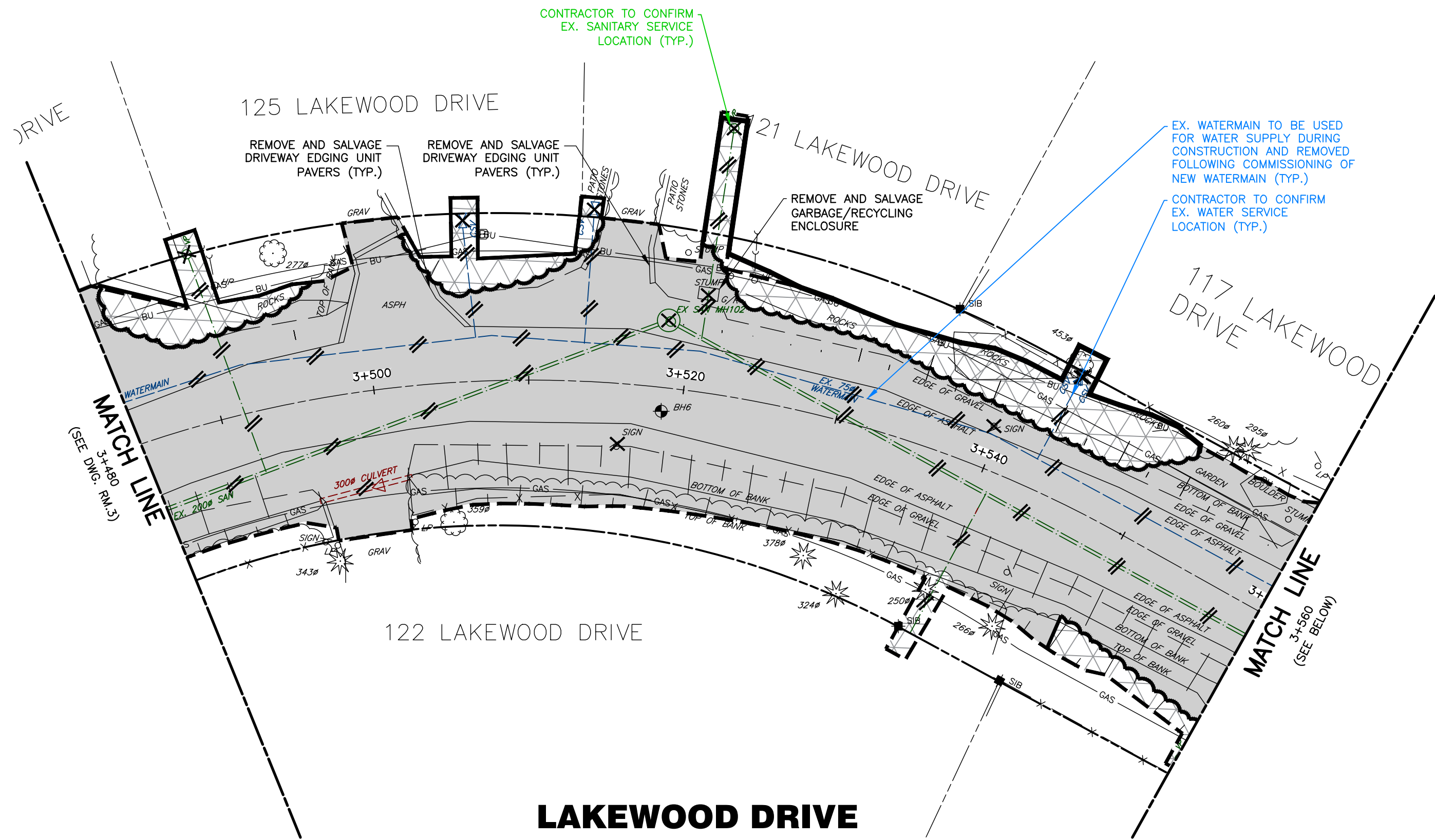
LAKEWOOD DRIVE RECONSTRUCTION  
TOWN OF THE BLUE MOUNTAINS  
202#-##-T-OPS

REMOVAL PLAN  
LAKEWOOD DRIVE  
STA. 3+260 TO 3+480

TATHAM  
ENGINEERING

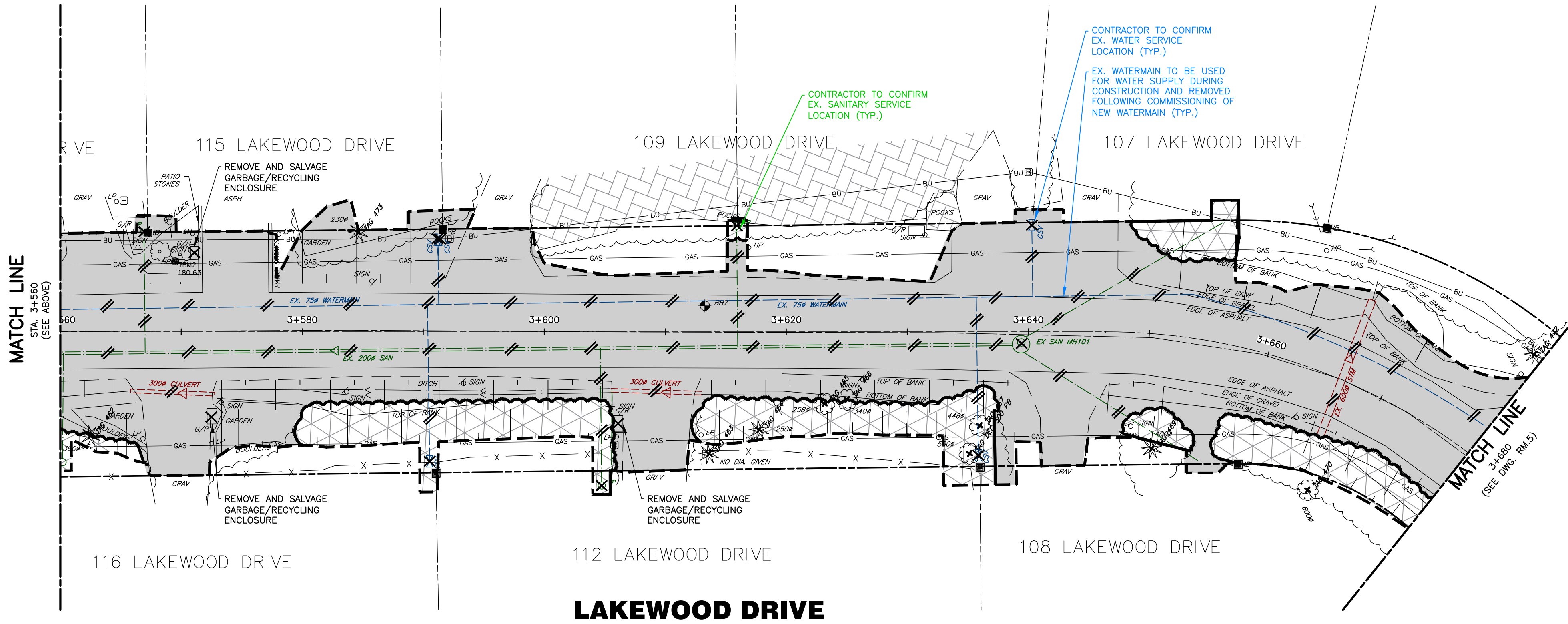
DESIGN: MS	FILE: 122152	DWG: RM.3
DRAWN: JK/NB	DATE: JUNE 2022	
CHECK: AEB	SCALE: 1:250 H 1:50 V	Sheet No. 5 of 33





KEY PLAN

- REMOVAL NOTES**
- EXISTING UTILITY INFORMATION HAS BEEN COMPILED FROM AS-BUILT/RECORD DRAWINGS PROVIDED FOR INFORMATION ONLY. CONTRACTOR TO VERIFY ACTUAL LOCATIONS AND DEPTHS OF UTILITIES AND ADVISE ENGINEER IMMEDIATELY OF CONFLICTS OR DISCREPANCIES WHEN IDENTIFIED.
  - REMOVALS FOR THE PURPOSE OF CLEANOUT INSTALLATIONS SHALL ONLY BE COMPLETED AFTER LOCATIONS OF SANITARY SERVICES HAVE BEEN CONFIRMED IN THE FIELD.
  - REMOVE AND/OR SALVAGE (AS NOTED IN THE CONTRACT DOCUMENT) ALL SURFACE FEATURES WITHIN SHADED AREA AS NECESSARY, UNLESS OTHERWISE NOTED. REMOVALS MAY ONLY EXTEND BEYOND LIMITS SHOWN AT THE DIRECTION OF THE ENGINEER.
  - ALL HYDRO POLES, GUY WIRES, UTILITY BOXES, TREES, HEDGES AND SHRUBS SHALL REMAIN AND BE PROTECTED/SUPPORTED DURING CONSTRUCTION, UNLESS OTHERWISE NOTED OR DIRECTED BY THE ENGINEER.
  - INFORMATION ON EXISTING SANITARY SERVICES WITHIN THE LIMITS OF CONSTRUCTION HAS BEEN COMPILED FROM AS-BUILT/RECORD DRAWINGS PROVIDED FOR INFORMATION. CONTRACTOR TO DETERMINE AND VERIFY LOCATION, ALIGNMENT, DEPTH, TYPE AND DIAMETER OF ALL SANITARY SERVICES WITHIN THE LIMITS OF CONSTRUCTION WHERE APPLICABLE. EACH SANITARY SERVICE WITHIN THE PROJECT LIMITS SHALL HAVE A NEW CLEANOUT INSTALLED.
  - CONTRACTOR TO REMOVE AND SALVAGE TRAFFIC SIGNS IN ACCORDANCE WITH THE APPROVED TRAFFIC CONTROL PLAN, ONCE ALTERNATIVE AND/OR TEMPORARY MEASURES ARE IN PLACE TO ENSURE SAFETY.
  - CONTRACTOR TO MARK ALL TREES FOR REMOVAL WITH CONTRACT ADMINISTRATOR PRIOR TO REMOVAL.
  - CONTRACTOR SHALL TAKE MEASURES TO PROTECT EXISTING SIDEWALK THAT IS NOT IDENTIFIED TO BE REMOVED AND REPLACED.



**REMOVAL LEGEND**

[Shaded Area]	AREA OF SURFACE FEATURE REMOVAL
[Hatched Area]	CLEARING AND GRUBBING
[Dashed Line]	TREE PROTECTION FENCE
[Thick Dashed Line]	MINIMUM LIMIT OF WORK
[X]	ITEM TO BE REMOVED OR SALVAGED

**DISCLAIMER AND COPYRIGHT**  
CONTRACTOR MUST VERIFY ALL DIMENSIONS AND BE RESPONSIBLE FOR SAME. ANY DISCREPANCIES MUST BE REPORTED TO THE ENGINEER BEFORE COMMENCING WORK. DRAWINGS ARE NOT TO BE SCALED.  
  
TATHAM ENGINEERING LIMITED CLAIMS COPYRIGHT TO THIS DRAWING WHICH MAY NOT BE USED FOR ANY PURPOSE OTHER THAN THAT PROVIDED IN THE CONTRACT BETWEEN THE OWNER/CLIENT AND THE ENGINEER WITHOUT THE EXPRESS CONSENT OF TATHAM ENGINEERING LIMITED.

**BENCHMARKS**

**NOTES**  
PIPE SIZES ARE IN MILLIMETRES UNLESS OTHERWISE INDICATED. ELEVATIONS ARE IN METRES UNLESS INDICATED. ALL DIMENSIONS, ELEVATIONS AND SIZES ARE IN METRIC UNITS UNLESS INDICATED.  
  
LEGAL SURVEY IS OBTAINED FROM ZUBEK, EMO, PATTEN & THOMSEN LIMITED ON SEPTEMBER 9, 2022 FOR LAKWOOD DRIVE. PARCEL INFORMATION FOR GREY ROAD 40 IS BASED ON TOWN OF THE BLUE MOUNTAIN'S INTERACTIVE MAP AND INTEGRATED USING SITE FEATURES. THE ACCURACY OF THE PARCEL IS NOT GUARANTEED AND THEREFORE APPROXIMATE.

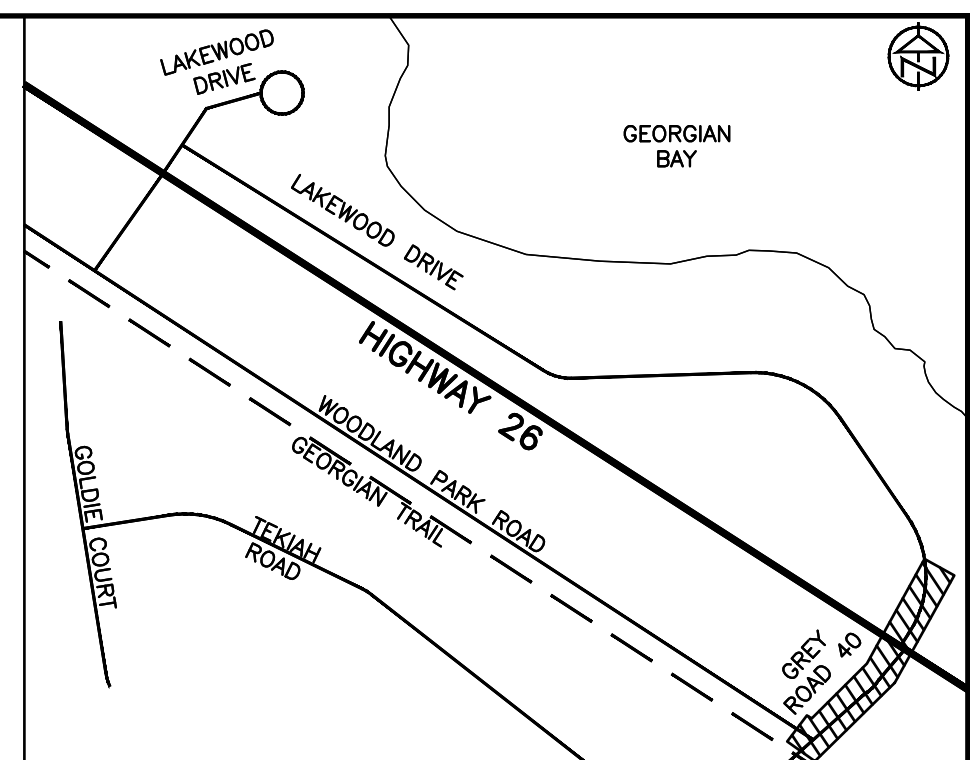
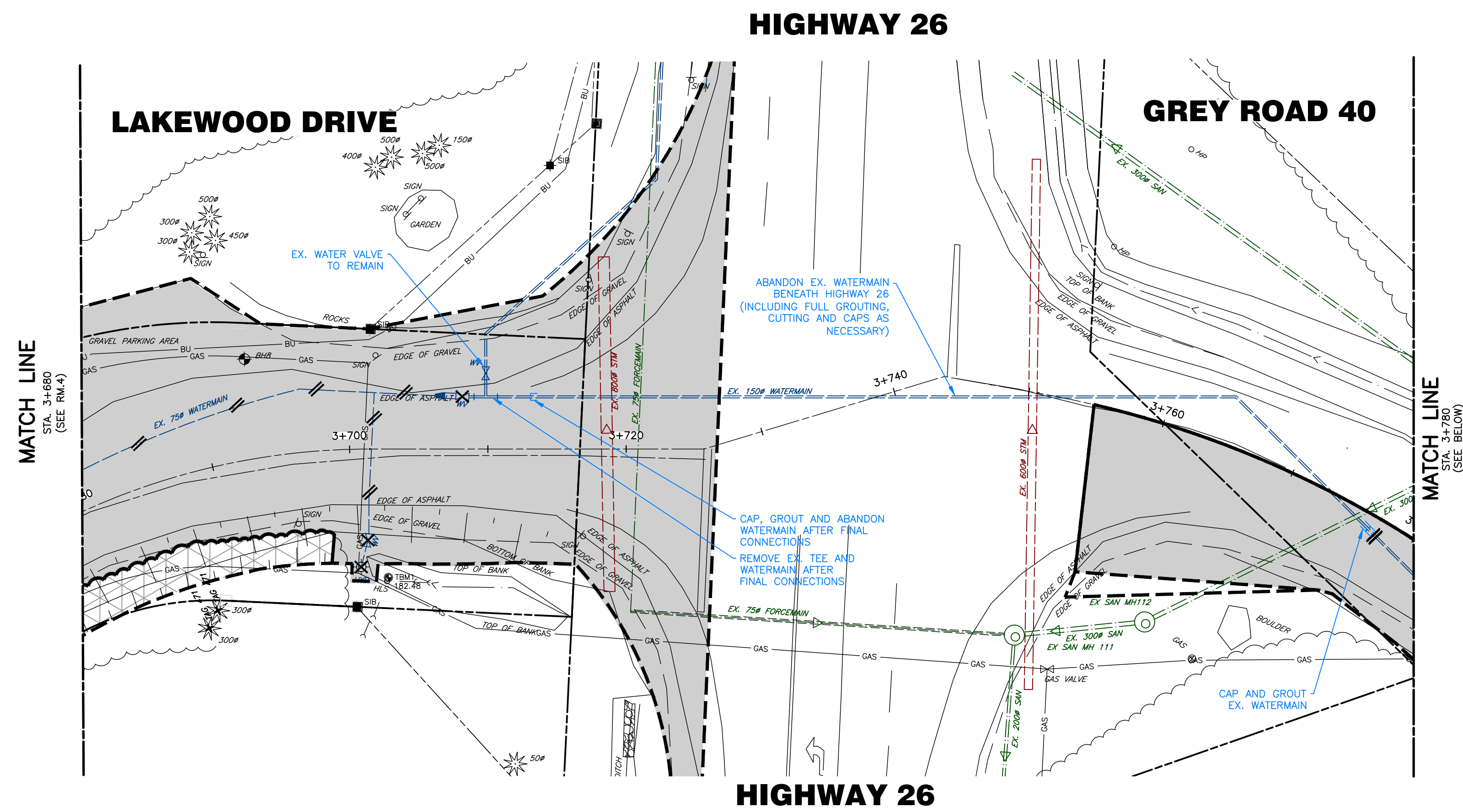
No.	REVISION DESCRIPTION	DATE	ENGINEER STAMP
1.	60% DESIGN SUBMISSION	OCT 2024	
2.	75% DESIGN SUBMISSION	DRAFT	

**PRELIMINARY**

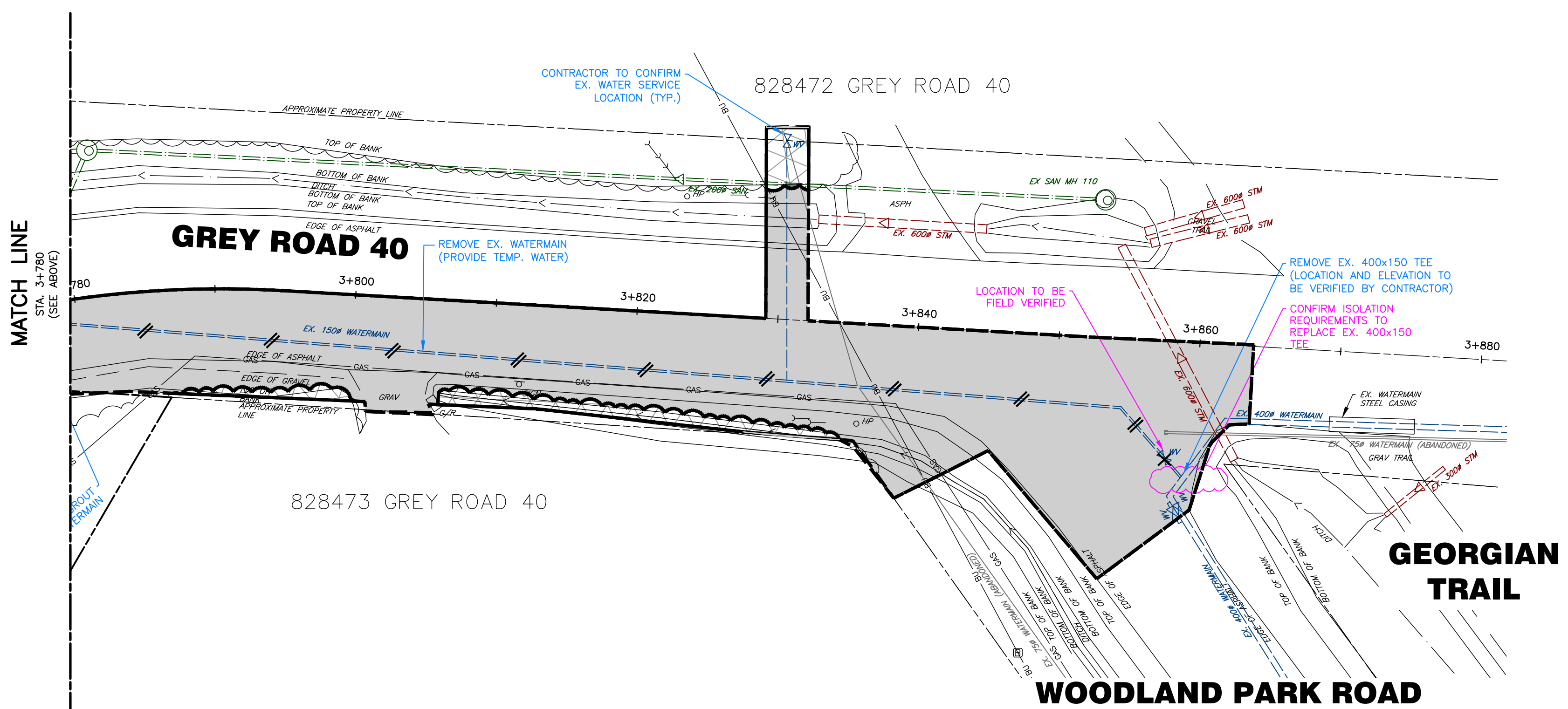
**LAKWOOD DRIVE RECONSTRUCTION**  
**TOWN OF THE BLUE MOUNTAINS**  
**202#-##-T-OPS**  
  
**REMOVAL PLAN**  
**LAKWOOD DRIVE**  
**STA. 3+480 TO 3+680**

DESIGN: MS	FILE: 122152	DWG:
DRAWN: JK/NB	DATE: JUNE 2022	<b>RM.4</b>
CHECK: AEB	SCALE: 1:250 H 1:50 V	Sheet No. 6 of 33





- REMOVAL NOTES**
1. EXISTING UTILITY INFORMATION HAS BEEN COMPILED FROM AS-BUILT/RECORD DRAWINGS PROVIDED FOR INFORMATION ONLY. CONTRACTOR TO VERIFY ACTUAL LOCATIONS AND DEPTHS OF UTILITIES AND ADVISE ENGINEER IMMEDIATELY OF CONFLICTS OR DISCREPANCIES WHEN IDENTIFIED.
  2. REMOVALS FOR THE PURPOSE OF CLEANOUT INSTALLATIONS SHALL ONLY BE COMPLETED AFTER LOCATIONS OF SANITARY SERVICES HAVE BEEN CONFIRMED IN THE FIELD.
  3. REMOVE AND/OR SALVAGE (AS NOTED IN THE CONTRACT DOCUMENT) ALL SURFACE FEATURES WITHIN SHADED AREA AS NECESSARY, UNLESS OTHERWISE NOTED. REMOVALS MAY ONLY EXTEND BEYOND LIMITS SHOWN AT THE DIRECTION OF THE ENGINEER.
  4. ALL HYDRO POLES, GUY WIRES, UTILITY BOXES, TREES, HEDGES AND SHRUBS SHALL REMAIN AND BE PROTECTED/SUPPORTED DURING CONSTRUCTION, UNLESS OTHERWISE NOTED OR DIRECTED BY THE ENGINEER.
  5. INFORMATION ON EXISTING SANITARY SERVICES WITHIN THE LIMITS OF CONSTRUCTION HAS BEEN COMPILED FROM AS-BUILT/RECORD DRAWINGS PROVIDED FOR INFORMATION. CONTRACTOR TO DETERMINE AND VERIFY LOCATION, ALIGNMENT, DEPTH, TYPE AND DIAMETER OF ALL SANITARY SERVICES WITHIN THE LIMITS OF CONSTRUCTION WHERE APPLICABLE. EACH SANITARY SERVICE WITHIN THE PROJECT LIMITS SHALL HAVE A NEW CLEANOUT INSTALLED.
  6. CONTRACTOR TO REMOVE AND SALVAGE TRAFFIC SIGNS IN ACCORDANCE WITH THE APPROVED TRAFFIC CONTROL PLAN, ONCE ALTERNATIVE AND/OR TEMPORARY MEASURES ARE IN PLACE TO ENSURE SAFETY.
  7. CONTRACTOR TO MARK ALL TREES FOR REMOVAL WITH CONTRACT ADMINISTRATOR PRIOR TO REMOVAL.
  8. CONTRACTOR SHALL TAKE MEASURES TO PROTECT EXISTING SIDEWALK THAT IS NOT IDENTIFIED TO BE REMOVED AND REPLACED.



- REMOVAL LEGEND**
- AREA OF SURFACE FEATURE REMOVAL
  - CLEARING AND GRUBBING
  - TREE PROTECTION FENCE
  - MINIMUM LIMIT OF WORK
  - ITEM TO BE REMOVED OR SALVAGED

**PRELIMINARY**

<div>DISCLAIMER AND COPYRIGHT</div> <div>CONTRACTOR MUST VERIFY ALL DIMENSIONS AND BE RESPONSIBLE FOR SAME. ANY DISCREPANCIES MUST BE REPORTED TO THE ENGINEER BEFORE COMMENCING WORK. DRAWINGS ARE NOT TO BE SCALED.</div> <div>TATHAM ENGINEERING LIMITED CLAIMS COPYRIGHT TO THIS DRAWING WHICH MAY NOT BE USED FOR ANY PURPOSE OTHER THAN THAT PROVIDED IN THE CONTRACT BETWEEN THE OWNER/CLIENT AND THE ENGINEER WITHOUT THE EXPRESS CONSENT OF TATHAM ENGINEERING LIMITED.</div>	BENCHMARKS	<div>NOTES</div> <div>PIPE SIZES ARE IN MILLIMETRES UNLESS OTHERWISE INDICATED. ELEVATIONS ARE IN METRES UNLESS INDICATED. ALL DIMENSIONS, ELEVATIONS AND SIZES ARE IN METRIC UNITS UNLESS INDICATED.</div> <div>LEGAL SURVEY IS OBTAINED FROM ZUBEK, EMO, PATTEN &amp; THOMSEN LIMITED ON SEPTEMBER 9, 2022 FOR LAKEWOOD DRIVE. PARCEL INFORMATION FOR GREY ROAD 40 IS BASED ON TOWN OF THE BLUE MOUNTAIN'S INTERACTIVE MAP AND INTEGRATED USING SITE FEATURES. THE ACCURACY OF THE PARCEL IS NOT GUARANTEED AND THEREFORE APPROXIMATE.</div>	No.	REVISION DESCRIPTION	DATE	ENGINEER STAMP	LAKWOOD DRIVE RECONSTRUCTION				<div>TATHAM ENGINEERING</div>	
			<div>PRELIMINARY</div>						TOWN OF THE BLUE MOUNTAINS			DWG:  <b>RM.5</b>
									202#-##-T-OPS			
									REMOVAL PLAN LAKEWOOD DRIVE STA. 3+680 TO 3+880			



