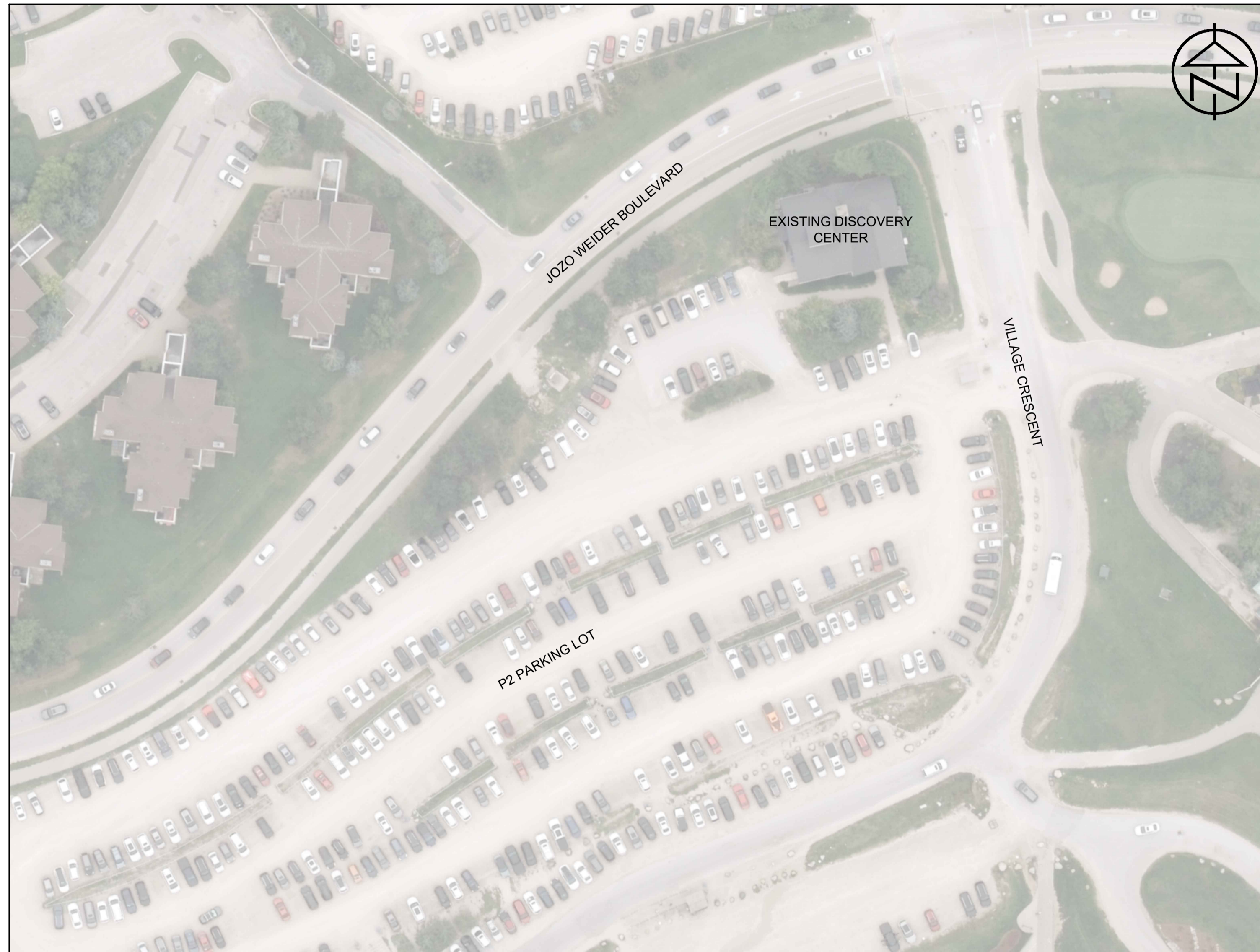


# P2 PARKING AREA

## TOWN OF THE BLUE MOUNTAINS

### PROJECT 125001



**FIRST ENGINEERING SUBMISSION**  
DECEMBER 9, 2025  
PROJECT 125001



## INDEX

DRAWING	DESCRIPTION
TP.1	TITLE PAGE
IN.1	INDEX SHEET
RM.1	REMOVALS AND EROSION CONTROL PLAN
SSG.1	SITE SERVICING AND GRADING PLAN
DE.1	TYPICAL DETAILS AND NOTES

## LEGEND

ITEM	EXISTING	PROPOSED
PROPERTY LINE	---	---
LOT LINE	---	---
CENTRELINE	---	---
EDGE OF ASPHALT	---	---
CONCRETE CURB	---	---
EDGE OF GRAVEL SHOULDER	---	---
DITCH/DIRECTION OF FLOW	--->	--->
DRAINAGE SWALE/DIRECTION OF FLOW	--->	--->
WATERMAIN/SIZE	--- 1500 W/M	--- 1500 W/M
WATER SERVICE	---	---
FIRE HYDRANT	◇ HYD	◆ HYD
EXISTING WATER VALVE	⊗ WV	⊗ WV
CURB STOP VALVE	⊗ CSV	⊗ CSV
WATERMAIN PLUG AND THRUST BLOCK	□	□
WATERMAIN BLOWOFF	⊗ BLOWOFF	⊗ BLOWOFF
WATERMAIN REDUCER	□	■
SANITARY SEWER/SIZE/DIRECTION OF FLOW	--- 2000 SAN >	--- 2000 SAN >
SANITARY MAINTENANCE HOLE	○ SAN MH	● SAN MH4
SANITARY SERVICE	---	---
SANITARY FORCEMAIN	---	---
STORM SEWER/SIZE/DIRECTION OF FLOW	--- 3750 STM >	--- 3750 STM >
STORM MAINTENANCE HOLE	○ STM MH	● STM MH4
CATCH BASIN	□ CB	■ CB4
DOUBLE CATCH BASIN	□ DCB	■ DCB4
CATCH BASIN MAINTENANCE HOLE	⊗ CBMH	⊗ CBMH4
DOUBLE CATCH BASIN MAINTENANCE HOLE	⊗ DCBMH	⊗ DCBMH4
DITCH INLET CATCH BASIN	□ DCIB	■ DCIB4
CULVERT	---	---
BELL UNDERGROUND	--- BU	--- BU
BELL AERIAL	--- BA	--- BA
CABLE UNDERGROUND	--- CU	--- CU
CABLE AERIAL	--- CA	--- CA
HYDRO UNDERGROUND	--- HU	--- HU
HYDRO AERIAL	--- HA	--- HA
GAS MAIN/SERVICE	--- GAS	--- GAS
FENCE	--- X X	--- X X
GUIDERAIL	---	---
BUSHLINE/TREELINE	~	~
CONTOUR	--- 179.00	--- 179.00
SPOT ELEVATION	X 179.00	X 179.00
GRADING DIRECTION/GRADE PERCENTAGE	--- 1.9%	--- 1.9%
DRAINAGE FLOW	←	←
TRAFFIC SIGN	▷ SIGN	▷ SIGN
TRAFFIC POLE/TRAFFIC SIGNAL	○ T/S	● P1
LIGHT STANDARD	○ L/S	● LS
HYDRO POLE	○ H/P	● HP
GUY WIRE	---	---
BELL POLE	○ BP	---
BELL MAINTENANCE HOLE	○ BELL MH	---
BELL PEDESTAL/VAULT	⊗	---
CABLE PEDESTAL/VAULT	⊗	---
HYDRO TRANSFORMER/VAULT	⊗	---
GAS VALVE	⊗ GAS VALVE	---
GAS MARKER	⊗ GAS	---
MAILBOX	⊗ M	---
STANDARD IRON BAR	■ IB	---
IRON BAR	■ IB	---
TEMPORARY BENCHMARK	⊗ TBM	---
BOREHOLE/TEST HOLE	⊗ B/H	---
DECIDUOUS/CONIFEROUS TREE, SHRUB/BUSH	☼	☼

### REFERENCE SOURCES

TOPOGRAPHIC SURVEY COMPLETED BY TATHAM ENGINEERING LIMITED, SEPTEMBER AND DECEMBER 2022 AND OCTOBER 2025.

LEGAL SURVEY COMPILED BY ZUBEK ONTARIO LAND SURVEYOR, PLAN OF SURVEY OF PART OF LOT 15 AND PART OF VILLAGE CRESCENT, DATED OCTOBER 15, 2025.

APPROXIMATE UTILITY LOCATIONS SHOWN PER PRIVATE UTILITY LOCATES COMPILED BY GEO DAYLIGHTING INC., DATED OCTOBER 24, 2025.

### DISCLAIMER & COPYRIGHT

THIS DRAWING IS NOT A LEGAL SURVEY AND MUST NOT BE USED FOR DEFINING PROPERTY BOUNDARIES OR LOCATING SURVEY MONUMENTS. PROPERTY LINES, DIMENSIONS AND ANY REFERENCE TO SURVEY BARS SHOWN HEREIN ARE APPROXIMATE AND FOR ILLUSTRATIVE OR PLANNING PURPOSES ONLY.

CONTRACTOR MUST VERIFY ALL DIMENSIONS AND BE RESPONSIBLE FOR SAME. ANY DISCREPANCIES MUST BE REPORTED TO THE ENGINEER BEFORE COMMENCING WORK. DRAWINGS ARE NOT TO BE SCALED.

TATHAM ENGINEERING LIMITED CLAIMS COPYRIGHT TO THIS DRAWING WHICH MAY NOT BE USED FOR ANY PURPOSE OTHER THAN THAT PROVIDED IN THE CONTRACT BETWEEN THE OWNER/CLIENT AND THE ENGINEER WITHOUT THE EXPRESS CONSENT OF TATHAM ENGINEERING LIMITED.

### BENCHMARKS

TBM1 - ELEVATION 224.11  
CUT CROSS ON CORNER OF CONCRETE TRANSFORMER PAD ON EAST SIDE OF VILLAGE CRESCENT AND WEST SIDE OF VILLAGE CONFERENCE CENTRE.

VERSION	DATE
1 50% DESIGN SUBMISSION	2025 12 05
2 FIRST ENGINEERING SUBMISSION	2025 12 09

DESIGN BY EL/KB DRAWN BY KB CHECKED BY KRS

### STAMP



COLLINGWOOD - BRACEBRIDGE - ORILLIA - BARRIE - OTTAWA - GUELPH

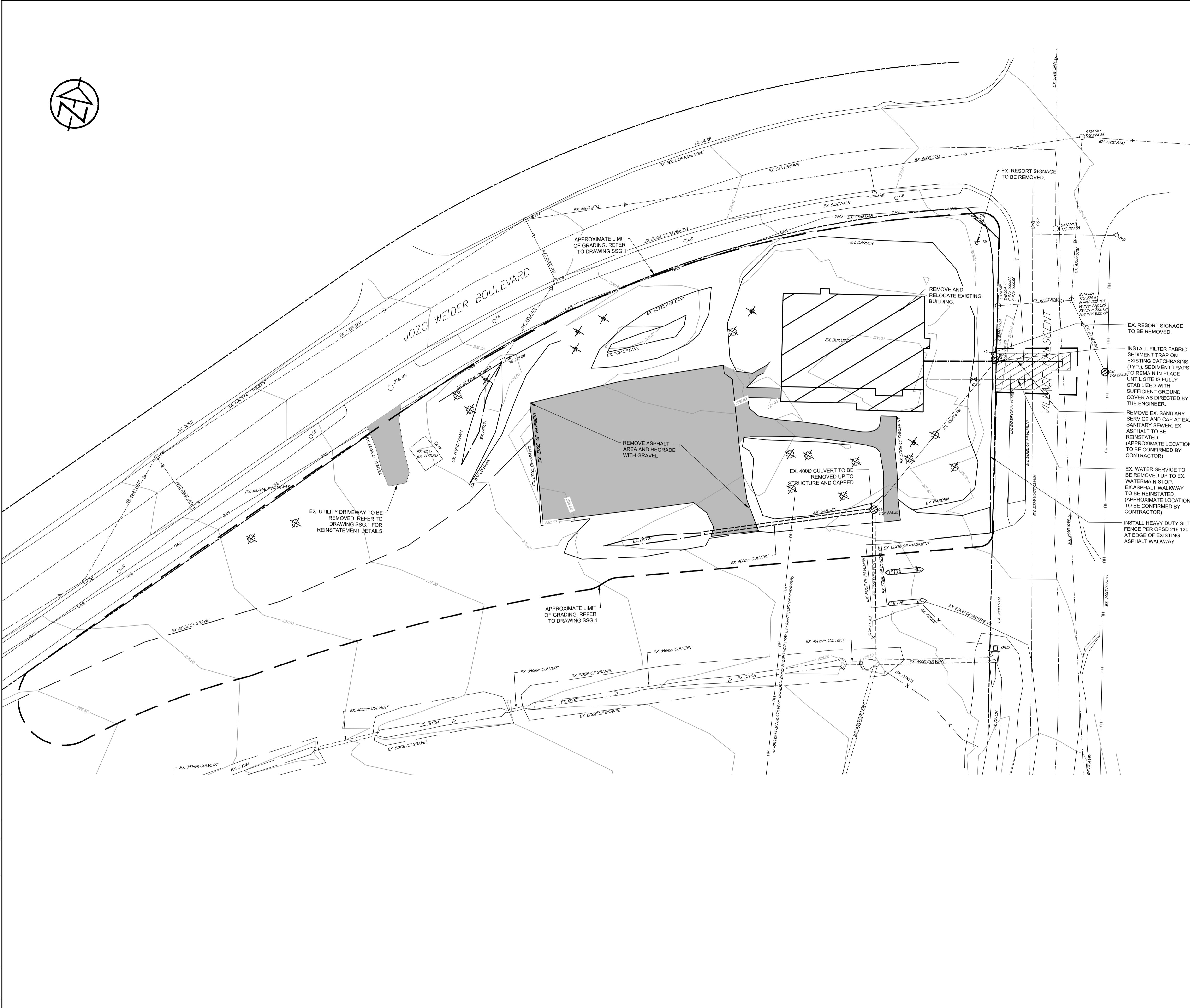
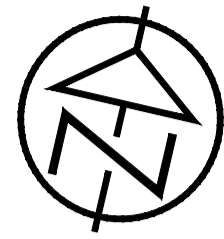
### PROJECT TITLE

**BLUE MOUNTAIN RESORTS LP  
P2 PARKING AREA  
TOWN OF THE BLUE MOUNTAINS**

### DRAWING TITLE

**INDEX AND LEGEND**

PROJECT	SCALE	DRAWING
125001		IN.1



**LEGEND**

EXISTING TREE TO BE REMOVED

PROPOSED FILTER FABRIC

PROPOSED SILT FENCE

**REFERENCE SOURCES**

TOPOGRAPHIC SURVEY COMPLETED BY TATHAM ENGINEERING LIMITED, SEPTEMBER AND DECEMBER 2022 AND OCTOBER 2025.

LEGAL SURVEY COMPILED BY ZUBEK ONTARIO LAND SURVEYOR, PLAN OF SURVEY OF PART OF LOT 15 AND PART OF VILLAGE CRESCENT, DATED OCTOBER 15, 2025.

APPROXIMATE UTILITY LOCATIONS SHOWN PER PRIVATE UTILITY LOCATES COMPILED BY GEO DAYLIGHTING INC., DATED OCTOBER 24, 2025.

**DISCLAIMER & COPYRIGHT**

THIS DRAWING IS NOT A LEGAL SURVEY AND MUST NOT BE USED FOR DEFINING PROPERTY BOUNDARIES OR LOCATING SURVEY MONUMENTS. PROPERTY LINES, DIMENSIONS AND ANY REFERENCE TO SURVEY BARS SHOWN HEREIN ARE APPROXIMATE AND FOR ILLUSTRATIVE OR PLANNING PURPOSES ONLY.

CONTRACTOR MUST VERIFY ALL DIMENSIONS AND BE RESPONSIBLE FOR SAME. ANY DISCREPANCIES MUST BE REPORTED TO THE ENGINEER BEFORE COMMENCING WORK. DRAWINGS ARE NOT TO BE SCALED.

TATHAM ENGINEERING LIMITED CLAIMS COPYRIGHT TO THIS DRAWING WHICH MAY NOT BE USED FOR ANY PURPOSE OTHER THAN THAT PROVIDED IN THE CONTRACT BETWEEN THE OWNER/CLIENT AND THE ENGINEER WITHOUT THE EXPRESS CONSENT OF TATHAM ENGINEERING LIMITED.

**BENCHMARKS**

TBM1 - ELEVATION 224.11  
CUT CROSS ON CORNER OF CONCRETE TRANSFORMER PAD ON EAST SIDE OF VILLAGE CRESCENT AND WEST SIDE OF VILLAGE CONFERENCE CENTRE.

VERSION	DATE
1 50% DESIGN SUBMISSION	2025 12 05
2 FIRST ENGINEERING SUBMISSION	2025 12 09

DESIGN BY EL/KB DRAWN BY KB CHECKED BY KRS



COLLINGWOOD - BRACEBRIDGE - ORILLIA - BARRIE - OTTAWA - GUELPH

**PROJECT TITLE**

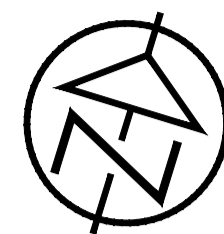
**BLUE MOUNTAIN RESORTS LP  
P2 PARKING AREA  
TOWN OF THE BLUE MOUNTAINS**

**DRAWING TITLE**

**REMOVALS AND EROSION  
CONTROL PLAN**

PROJECT	SCALE	DRAWING
125001	1:250	RM.1

Drawing Path: I:\2025\Projects\125001 - Blue Mountain Resorts - 2025\CD\Drawings\Sheet\125001-RM1.dwg, Plotter: PLOT, Date: 12-10-2025



**KEY PLAN**

**LEGEND**

- PROPOSED LANDSCAPE AREA
- PROPOSED CEDAR RAIL FENCE

**REFERENCE SOURCES**

TOPOGRAPHIC SURVEY COMPLETED BY TATHAM ENGINEERING LIMITED, SEPTEMBER AND DECEMBER 2022 AND OCTOBER 2025.

LEGAL SURVEY COMPILED BY ZUBEK ONTARIO LAND SURVEYOR, PLAN OF SURVEY OF PART OF LOT 15 AND PART OF VILLAGE CRESCENT, DATED OCTOBER 15, 2025.

APPROXIMATE UTILITY LOCATIONS SHOWN PER PRIVATE UTILITY LOCATES COMPILED BY GEO DAYLIGHTING INC., DATED OCTOBER 24, 2025.

**DISCLAIMER & COPYRIGHT**

THIS DRAWING IS NOT A LEGAL SURVEY AND MUST NOT BE USED FOR DEFINING PROPERTY BOUNDARIES OR LOCATING SURVEY MONUMENTS. PROPERTY LINES, DIMENSIONS AND ANY REFERENCE TO SURVEY BARS SHOWN HEREIN ARE APPROXIMATE AND FOR ILLUSTRATIVE OR PLANNING PURPOSES ONLY.

CONTRACTOR MUST VERIFY ALL DIMENSIONS AND BE RESPONSIBLE FOR SAME. ANY DISCREPANCIES MUST BE REPORTED TO THE ENGINEER BEFORE COMMENCING WORK. DRAWINGS ARE NOT TO BE SCALED.

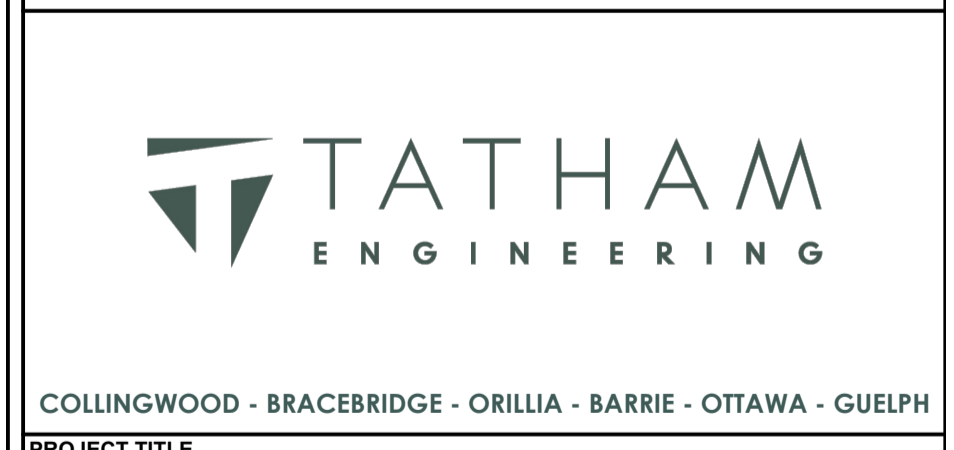
TATHAM ENGINEERING LIMITED CLAIMS COPYRIGHT TO THIS DRAWING WHICH MAY NOT BE USED FOR ANY PURPOSE OTHER THAN THAT PROVIDED IN THE CONTRACT BETWEEN THE OWNER/CLIENT AND THE ENGINEER WITHOUT THE EXPRESS CONSENT OF TATHAM ENGINEERING LIMITED.

**BENCHMARKS**

TBM1 - ELEVATION 224.11  
 CUT CROSS ON CORNER OF CONCRETE TRANSFORMER PAD ON EAST SIDE OF VILLAGE CRESCENT AND WEST SIDE OF VILLAGE CONFERENCE CENTRE.

VERSION	DATE
1 50% DESIGN SUBMISSION	2025 12 05
2 FIRST ENGINEERING SUBMISSION	2025 12 09

DESIGN BY EL/KB DRAWN BY KB CHECKED BY KRS



COLLINGWOOD - BRACEBRIDGE - ORILLIA - BARRIE - OTTAWA - GUELPH

**PROJECT TITLE**

**BLUE MOUNTAIN RESORTS LP  
 P2 PARKING AREA  
 TOWN OF THE BLUE MOUNTAINS**

**DRAWING TITLE**

**SITE SERVICING AND GRADING  
 PLAN**

PROJECT	SCALE	DRAWING
125001	1:250	SSG.1

