

# The Beaver River Trail Working Group

A vision for trail connectivity  
and preservation



Feb 10 2026 Public Meeting



# My Story

<https://www.youtube.com/shorts/O9D8o9BF6kA>

Subscribe

Beaver River Trail Access from Alice east



Like



Dislike



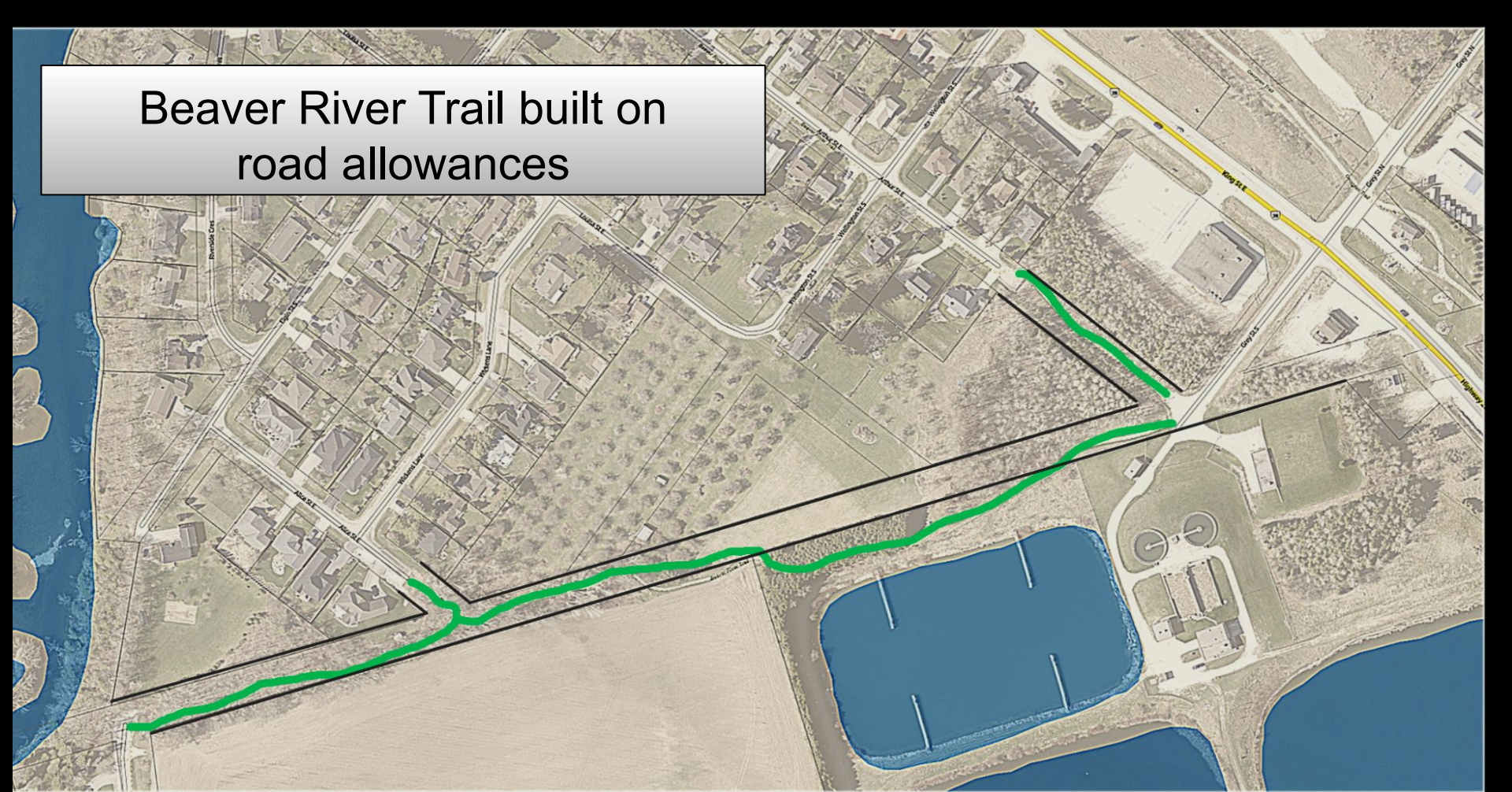
Share



Remix



Beaver River Trail built on  
road allowances



Russell Street road allowance,  
looking north



Russell Street road allowance at Arthur Taylor Lane, looking south



# Current Town Trails Map



# Our Vision

## The Beaver River Trail, Thornbury's Linear Park

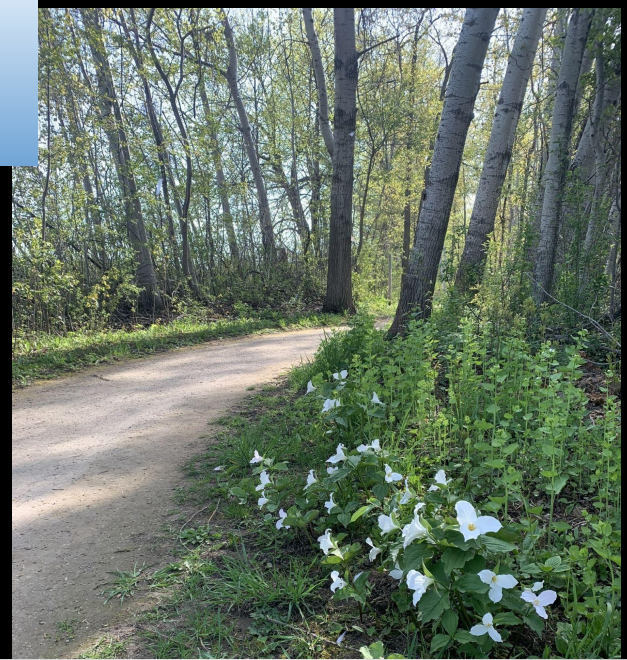
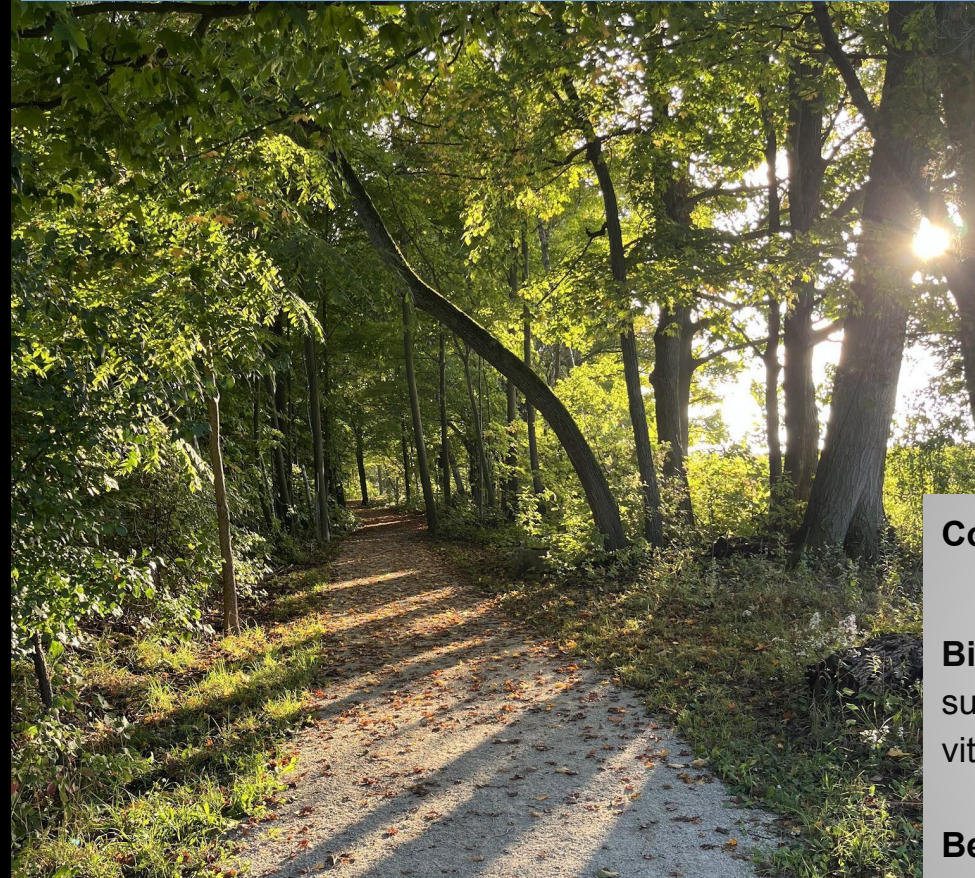


**Active transportation** Increases cycling infrastructure and provides link to the Georgian Trail

**Tourism infrastructure** Creates walking tourism experiences to visitors of Thornbury (Some of the attractions en route include Bayview Park, Penny's Motel, Thornbury Cidery, Sheffield Black History Museum, Marsh Street Centre, various vistas of Beaver River)

# Our Vision

The Beaver River Trail, Thornbury's Linear Park



**Contributes to the Town's climate change preparedness**

**Biodiversity Conservation** A single, healthy hedge can support over 2,000 species of plants and animals, acting as vital wildlife corridors between fragmented habitats.

**Benefits farmland in Thornbury**



Thank you