

# OVERVIEW

The Thornbury Clarksburg Union Cemetery Master Plan was completed by the Town of The Blue Mountains in collaboration with LEES+Associates in November 2023. The plan has been created to guide the future operations, care, and development of the Thornbury Clarksburg Union Cemetery site to ensure the long-term sustainability of cemetery services over the next 25 years.

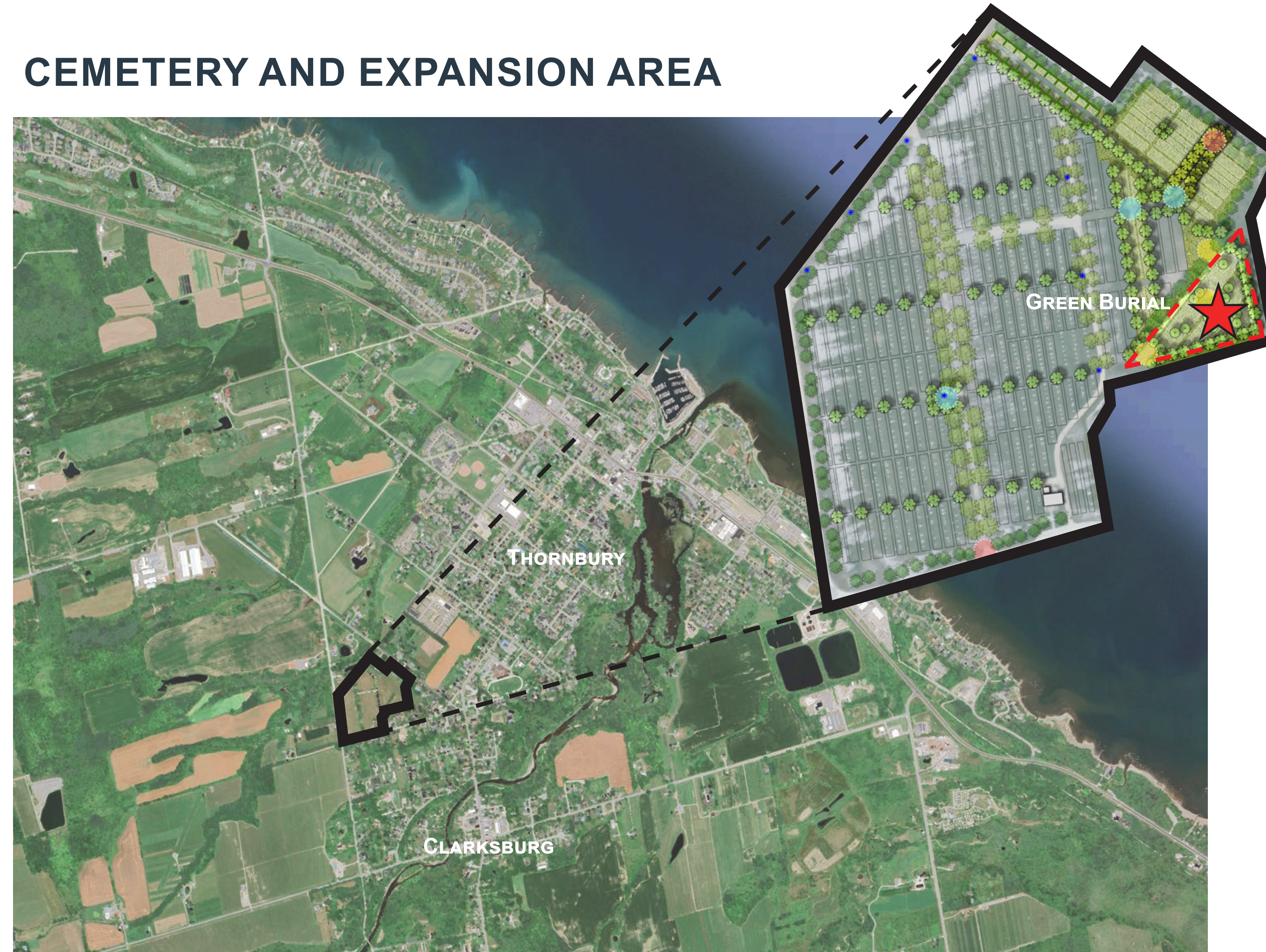
The plan set out a geometry for the cemetery as a whole as it develops further, while both expanding existing and providing new interment options.

The current project, the initial phase of a Green Burial Area, was an action item in that Master Plan.

This project will refine the Green Burial Area concept design, develop detailed construction drawings, and apply for permits and approvals.

The project will identify recommendations for how to construct the proposed features, with a goal of being able to facilitate burials in the fall of 2026 or Spring 2027.

## CEMETERY AND EXPANSION AREA



Project site looking northeast along conifer row.



Existing feature tree at edge of project site.

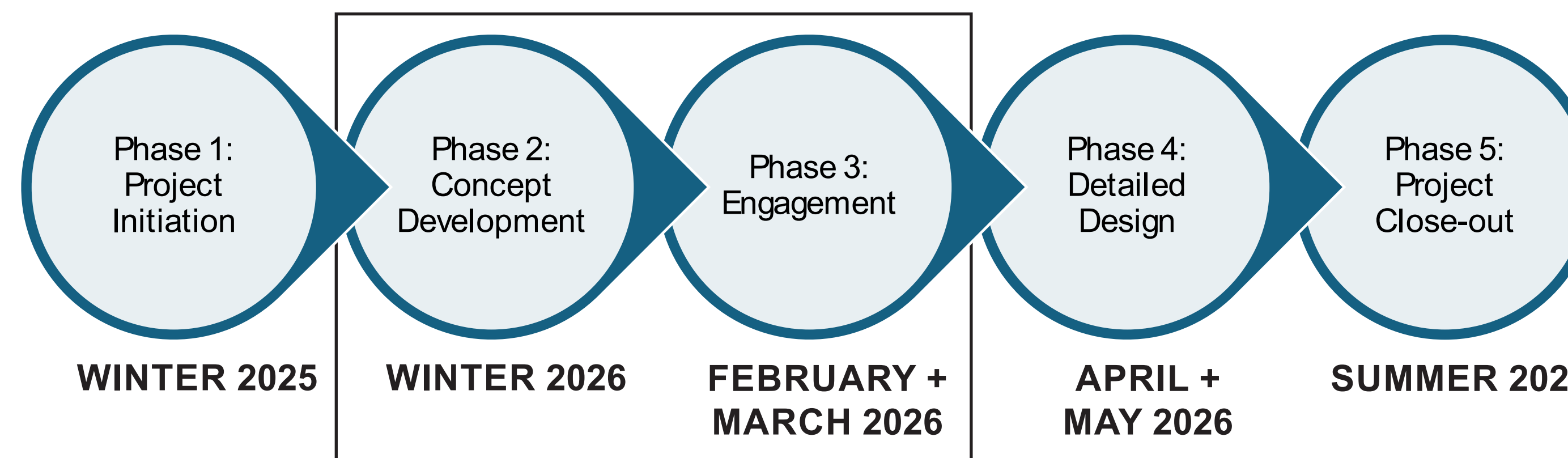


Cemetery signage and existing interments.



Proposed Operations Access link.

## PROJECT TIMELINE

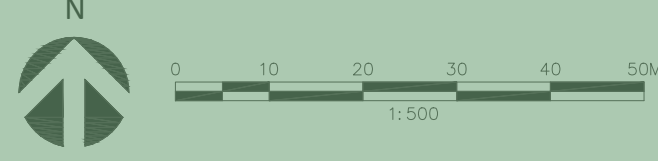


# CEMETERY CONCEPT PLAN

## CONCEPT OBJECTIVES

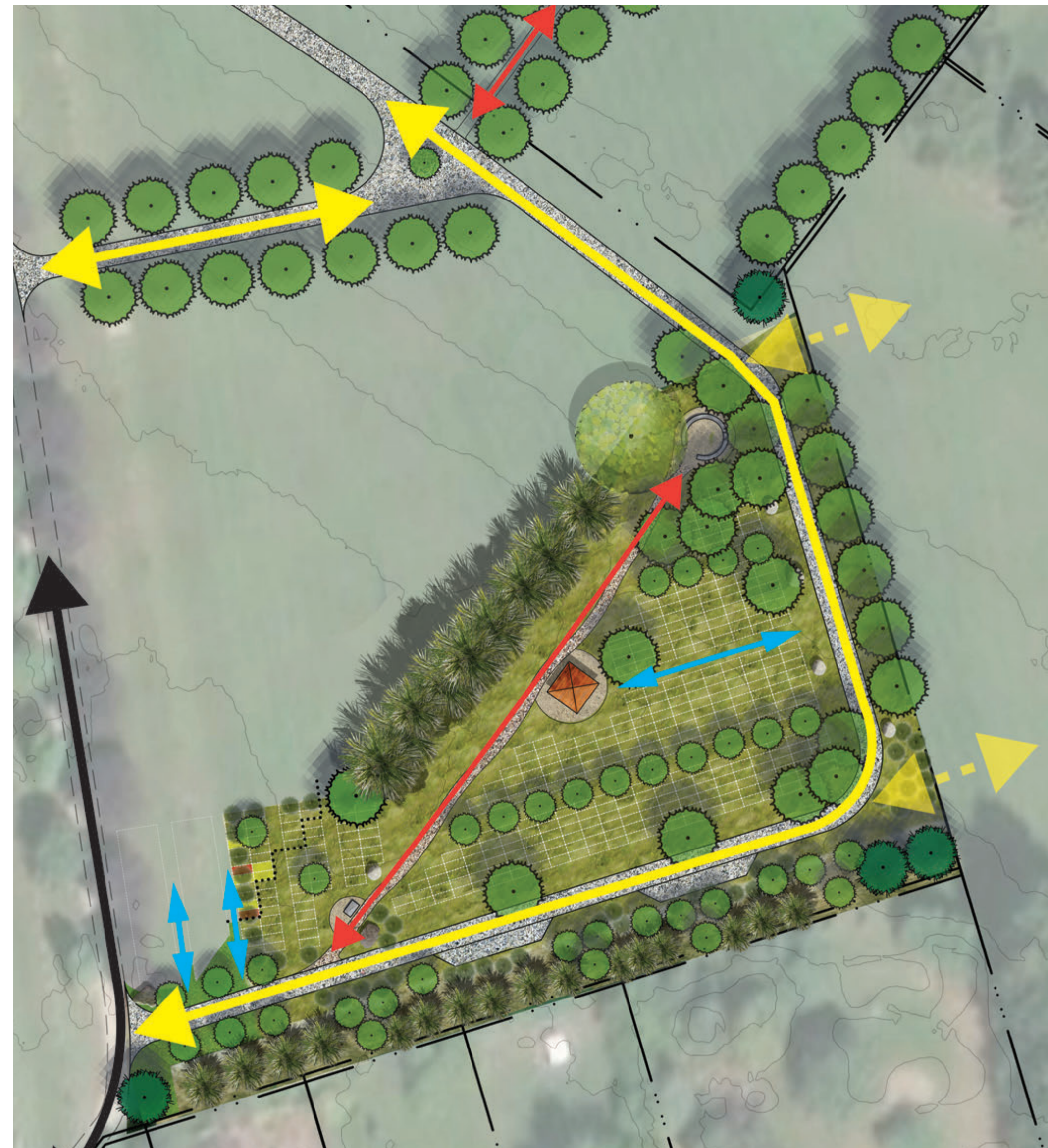
The Town of The Blue Mountains is introducing a Green Burial area at Thornbury Clarksburg Union Cemetery. The primary objectives of this project are to:

- Create a beautiful and meaningful Green Burial Expansion Area that's integrated with the rest of the cemetery
- Enhance biodiversity and maintain existing trees
- Ensure a sufficient buffer between the neighbours and the Green Burial Expansion area
- Incorporate existing green burial lots into the area
- Implement a phased design and construction approach that prioritizes enabling green burial interments as early as Fall 2026, with remaining site development completed in 2027 and potentially beyond








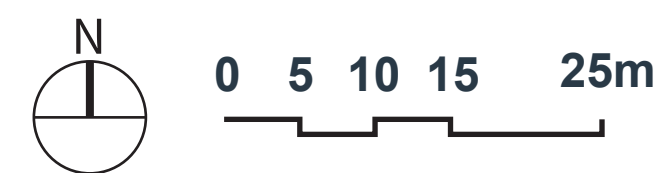
# CIRCULATION AND INTERMENT

## CIRCULATION PLAN



LEGEND

-  EXISTING DRIVEWAY
-  PROPOSED OPERATIONS/PEDESTRIAN
-  PROPOSED OPERATIONS/PEDESTRIAN (POSSIBLE FUTURE DEVELOPMENT)
-  MOWN OR LAWN PATH FOR OPERATIONS/PEDESTRIAN
-  PEDESTRIAN



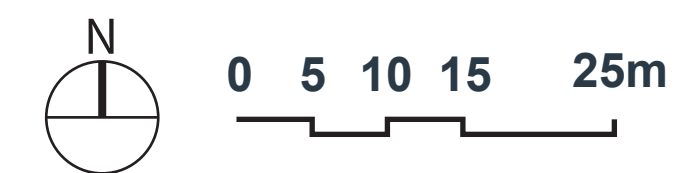
## INTERMENT PHASING PLAN



LEGEND

-  PHASE 1
-  PHASE 2
-  PHASE 3
-  PHASE 4

TOTAL CAPACITY: 360+ LOTS

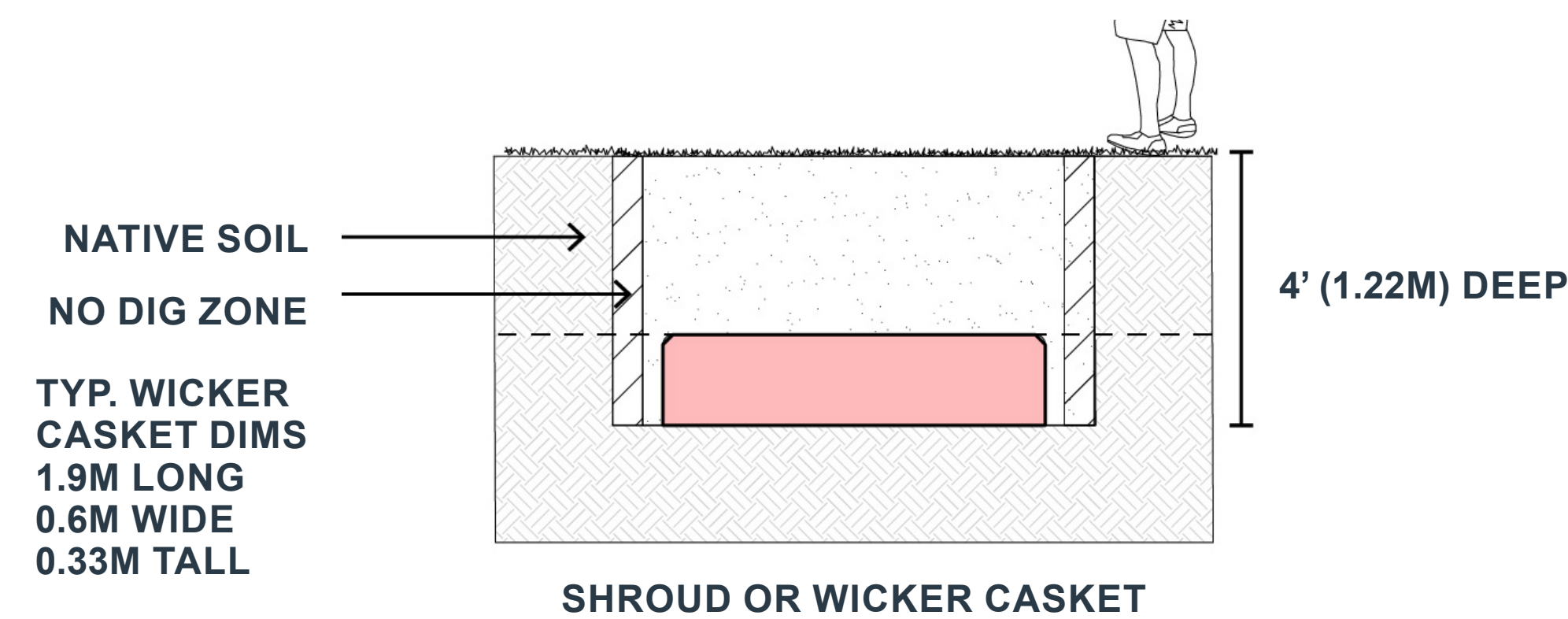
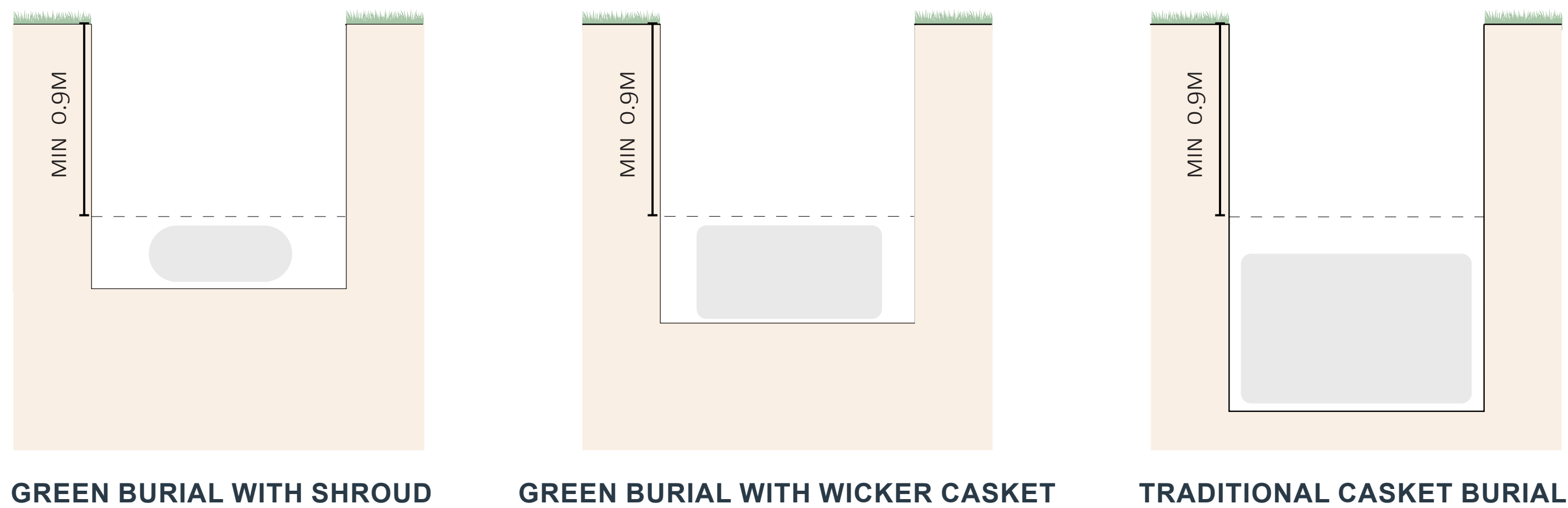


# WHAT IS GREEN BURIAL?

Green Burial is a growing burial trend in North American cemeteries, providing an option for interment that is closely aligned with the environment both through practice and ceremony.

Five principles guide the development of Green Burial areas:

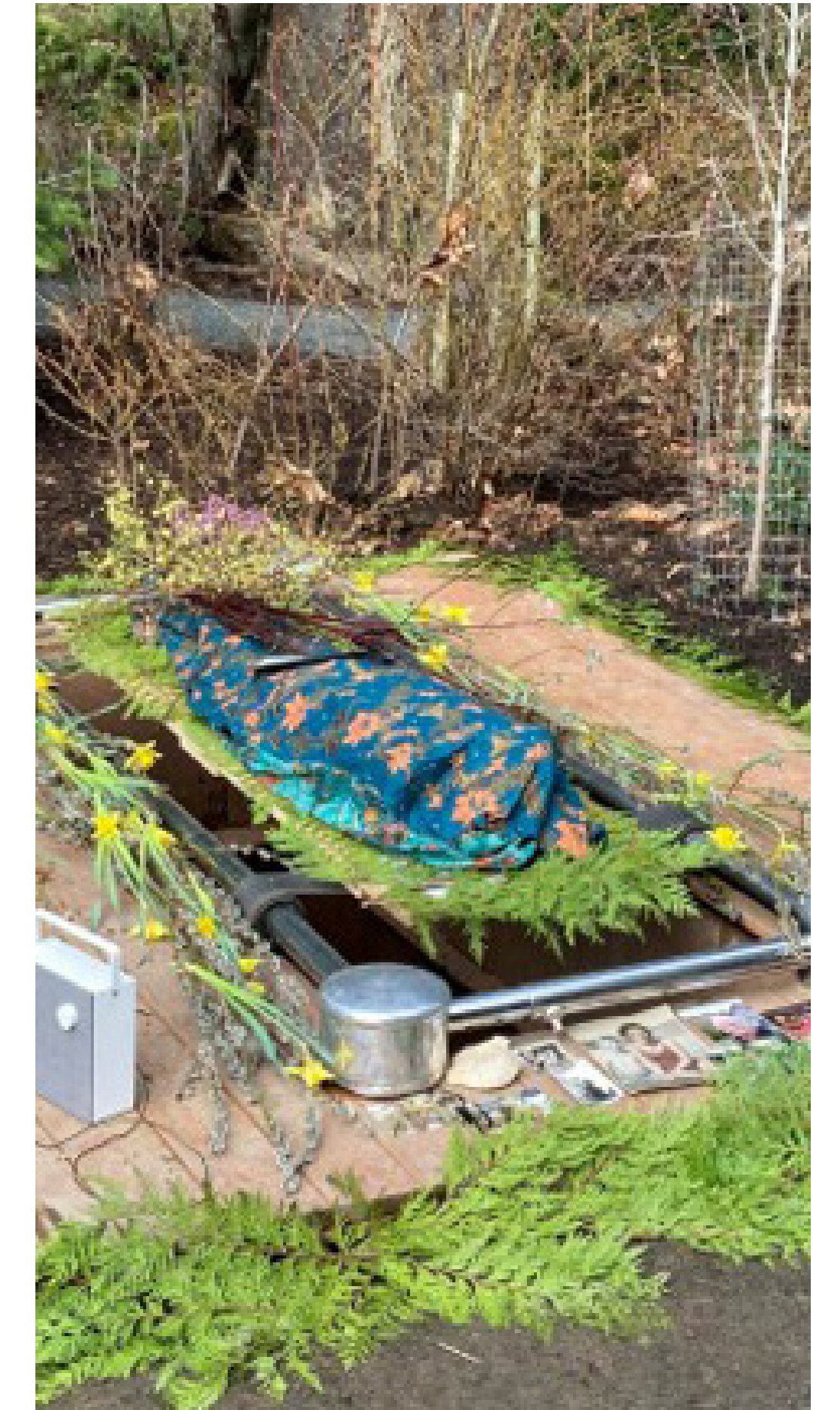
1. No embalming
2. No outer burial container (eg. concrete, fibreglass vaults)
3. A biodegradable casket or shroud
4. Minimal memorialization (eg. communal markers)
5. Ecological restoration/conservation principles



Biodegradable casket for Green Burial



Mown path for Green Burial lot access



Biodegradable shroud for Green Burial

# ENTRY AND CIRCULATION

## ROADS AND PATHS



Compacted Stone Dust Pedestrian Path



Gravel Driveway (option with a mown strip)



Gravel Driveway (option similar to other driveways)



Mown Edge Meadow (between grave rows)

## ENTRY FEATURES AND SIGNS



Inscribed Stone for Section Entry Sign



Entree Allée (orchard inspired)



Metal and Stone (option for consideration)



Split Stone Entry Gateway

### Proposed Design Approach:

- 2m wide accessible pathway with compacted stone screenings
- 3 meter gravel driveway allows for operations access and public vehicular traffic.
- 2-3m wide Mown lawn pathways allow for access (limited) throughout the meadow area

### Proposed Design Approach:

- Local quarried stone sign to mark the entry, section name (Green Burial, the Meadow) and / or a meaningful quote.
- An allée of trees, mimicing orchard rows, frames the pathway into the area area.
- Upcycled local stone could be split and used to frame the entry

# CEREMONIAL SPACES

## CIRCULAR GATHERING NODE



Stone Blocks in a Semi-Circular Bench Seat



Benches made from Sustainable Low Carbon Materials



Wood Bench on Stone Wall (backrest and arm options)

### Proposed Design Approach:

- Natural local stone blocks to create a semi-circular bench seat
- The circular bench takes advantage of views toward the heritage maple and the cemetery
- Additional formal benches or handrails/backrest will be added to enhance comfort and improve accessibility for all visitors

## COVERED SHELTER



Decorative Wood Shelter



Flat Roof with Stone Base



Peaked Roof Style

### Proposed Design Approach:

- Simple wood structure allows for seasonal protection from the sun, rain and snow
- Timber construction sourcing sustainable materials such as kiln fired Ash or untreated Cedar
- The shelter can be used for small ceremonies and gatherings

# MEADOW BURIAL PLANTING AND COMMEMORATION

## MANAGED MEADOW PLANTING



Edge Framed with Little Bluestem Grasses



Summer Meadow

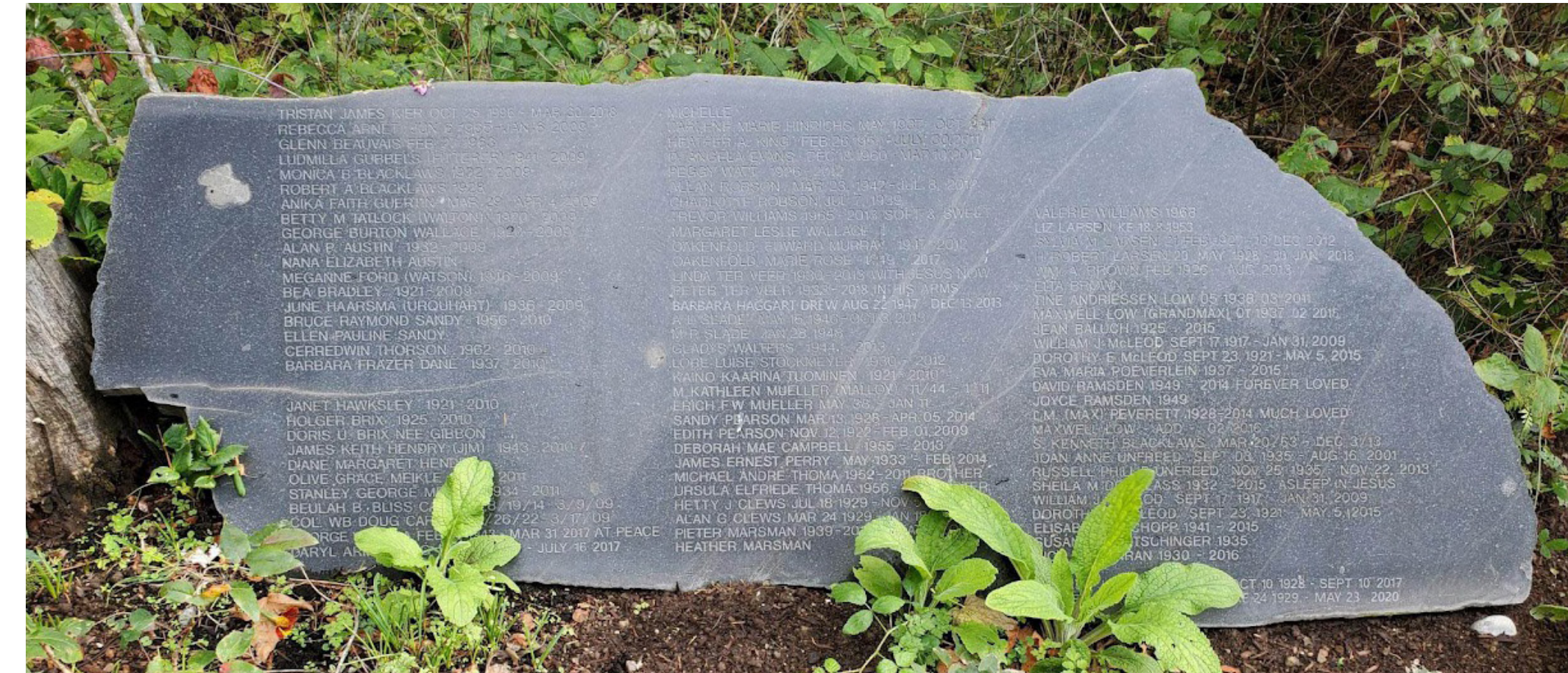


Fall Meadow



Tree Groupings in Meadow

## COMMUNAL COMMEMORATION



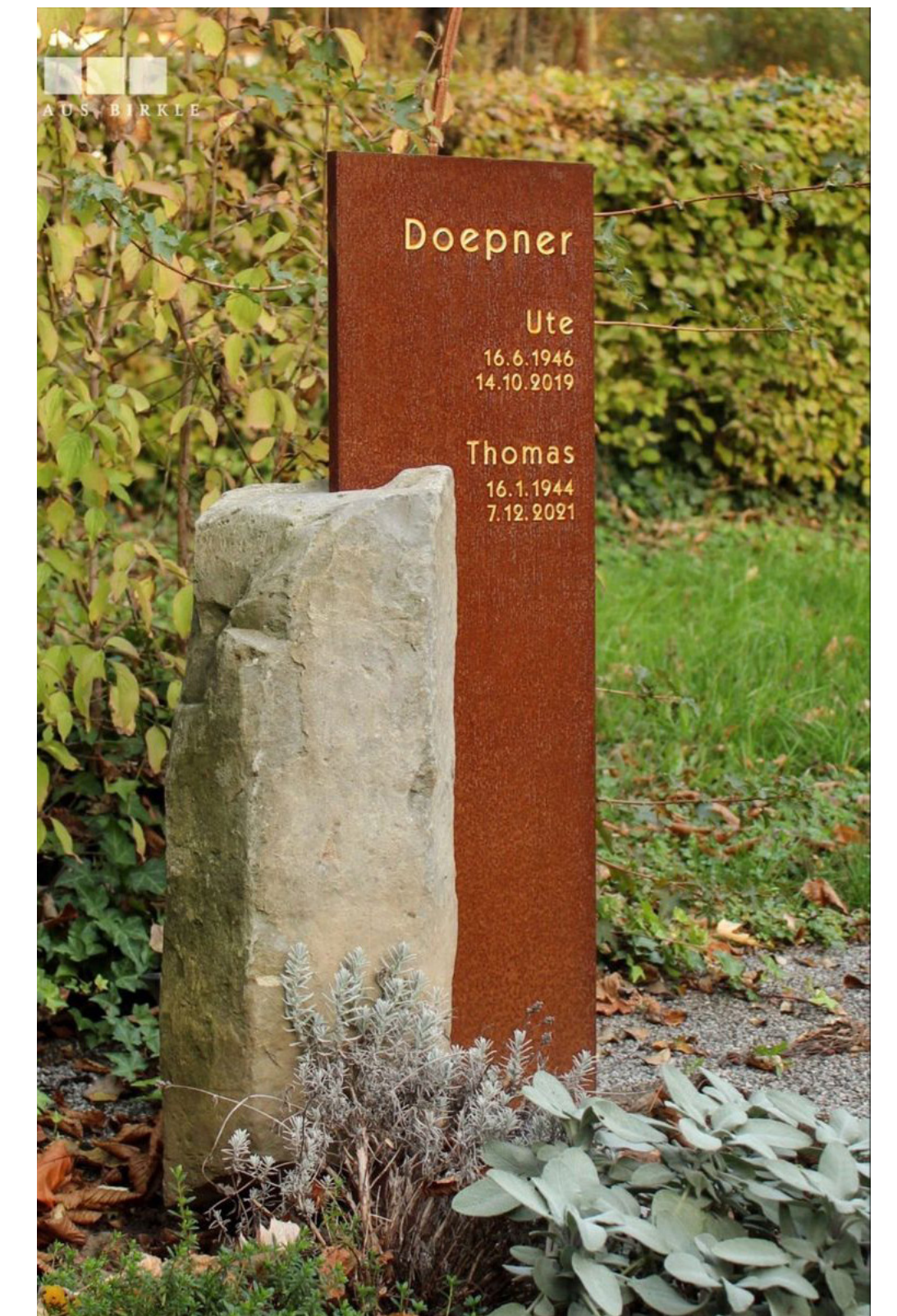
Horizontal Stone (compact text format, fewer stones)



Verticle Smaller Stone



Horizontal Stone (spaced text format, many stones)



Metal and Stone Combination (cremation area)

## Proposed Establishment and Maintenance Strategy

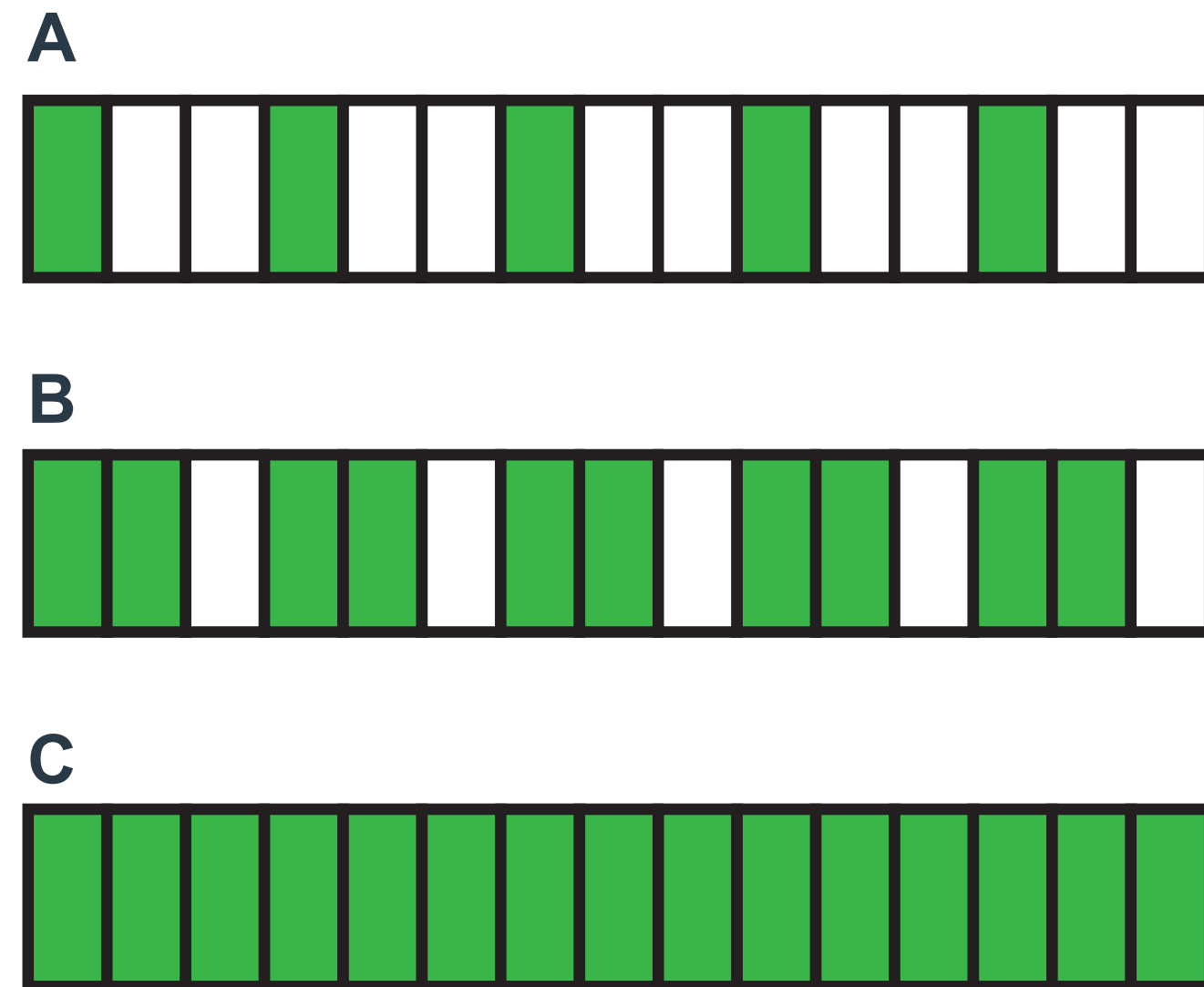
- Seed native grass and wildflower mix with select installation of potted plants (seeded perennials can take up to two years to bloom)
- Cut and raked stems each Spring, moving to bi-annually, consideration for controlled burns every 5-10 years
- Overseed and/or potted plants after burials have been concluded

## Proposed Design Approach:

- Local stone with a cut face for communal inscription of names
- Commemorative stones to be located at the terminus of pathways or amidst the meadow plantings adjacent to paths and driveways
- Inscriptions to be scheduled for once or twice per year

# GREEN BURIAL SUCCESSION

## INTERMENT PLAN



Green Burial is best implemented at need in a phased approach:

- The entire area is divided into phases, which will open consecutively after the previous phase is filled
- Within each phase, Green Burial lots will be filled in sequential order at need (no advance lot selection)
- Every third lot will be infilled, as shown in the above diagram (A), to allow the ground to settle and stabilize between interments
- Once the first set of interments in a row is complete, lots will again be filled at every third grave, as shown in diagrams B and C

## MANAGED FOREST BUFFER

### SECTION



### PERSPECTIVE



### KEY PLAN



## Potential Species (planning for climate resiliency):

- Shrubs: Snowberry, Fragrant Sumac, Red Osier Dogwood, Viburnum
- Deciduous trees: Sugar Maple, Red Oak, Tulip Tree
- Deciduous trees (small): White Birch, Blue Beech
- Existing coniferous trees to remain

---

## Pathways, Driveways and Parking

Should public vehicular access be provided through the site?

Seasonal access only?

Or only during funerals?

What are your thoughts on pathway and driveway size and surfacing treatment?

Do you want to see parking laybys as shown?

---

## Gathering and Ceremony Areas

Do you have a preferred shelter style?

What type of seating do you want provided? Preferred style or materials?

Should gathering areas have hardscape (stone, paved) surface or compacted stone dust like the pathways?

Are there other features to include?

---

## Signs and Memorial Markers

How should the section be branded? A name, quote or other text to define the entrance?

What would you like the communal memorials to look like?

Are there any themes, symbols or iconography that should be included in design features?

Do you want to see educational signs included in burial area?

---

## Planting and Other Comments

Do you agree with the planting approach? Any changes?

Any favorite native plants that should be included in the plan?

Do you have any comments or ideas you'd like to include or change?