

# Moreau Park

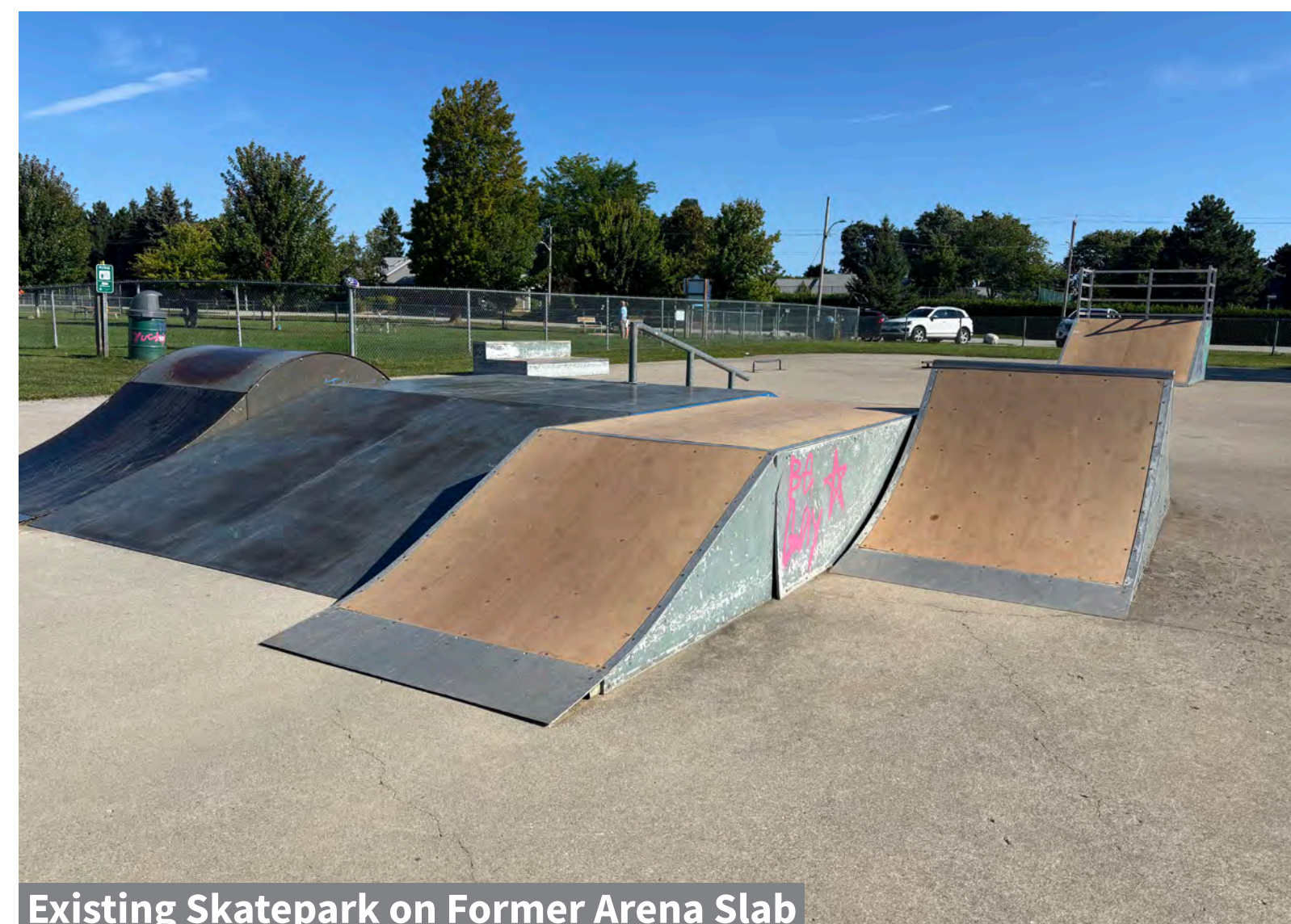
# Engagement Approach

Town of the Blue Mountains is continuing to explore the needs and preferences of the community for Moreau Park in Thornbury. In response to a deputation by the Thornbury-Clarksburg Rotary Club, the Town conducted a survey in 2023 to gather initial community feedback on the future of the park. Building on the findings of that work, the current public engagement phase is designed to further explore potential design options and to examine appropriate fit, scale, and complementary programming uses. Input gathered through this engagement phase will help inform future budgeting decisions and the overall phasing of the project.

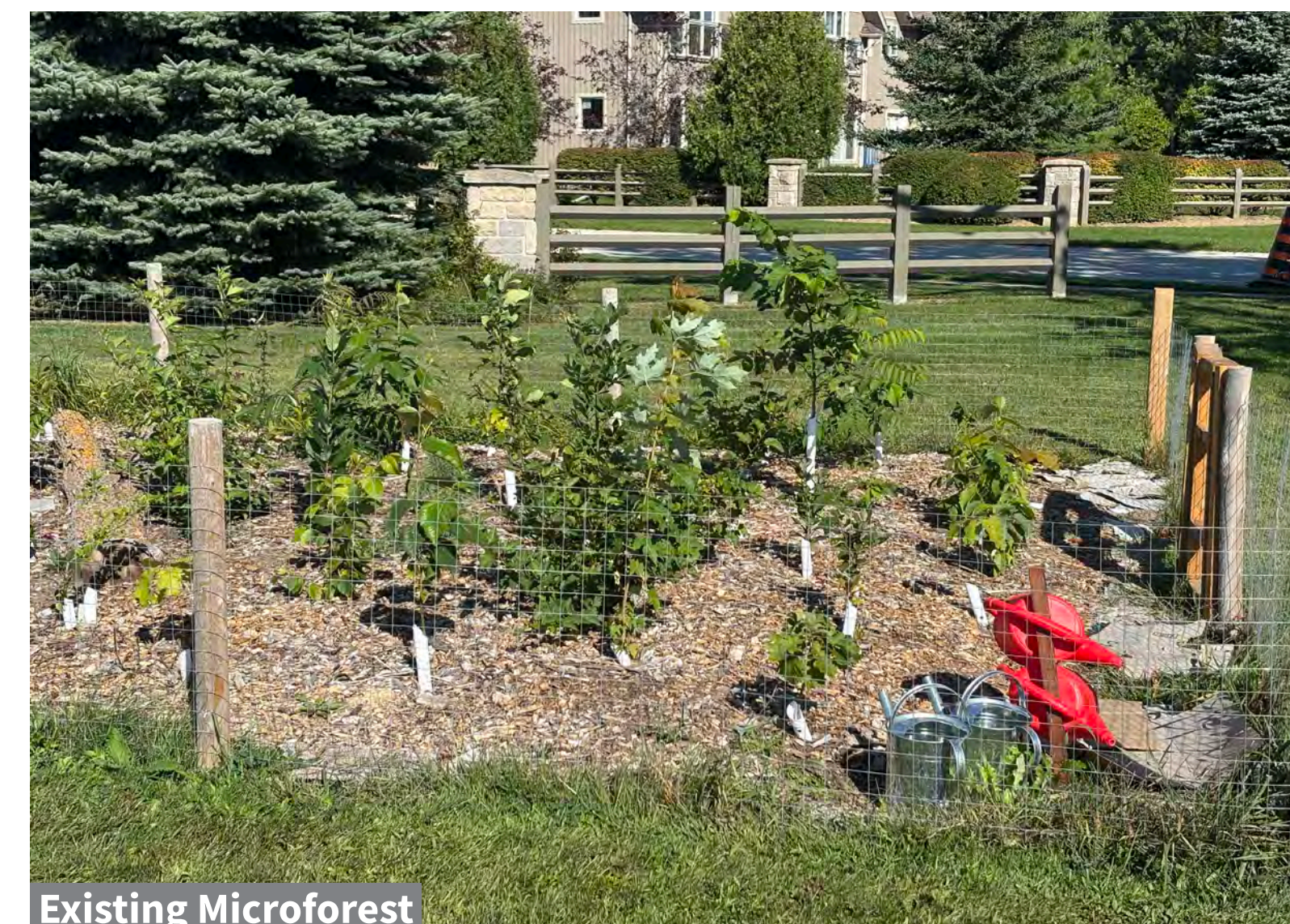
Please note that the concepts shown as part of this work are **preliminary** for the purpose of generating discussion. They show the general program that was determined through the 2023 Public Survey process, but the forms and extents are still being studied. Your feedback will inform the final refined design and project phasing.



Main Entry on Victoria St. S



Existing Skatepark on Former Arena Slab



Existing Microforest



History of the Local Diamonds



Existing Playground



Drainage Slopes along Alice St. W



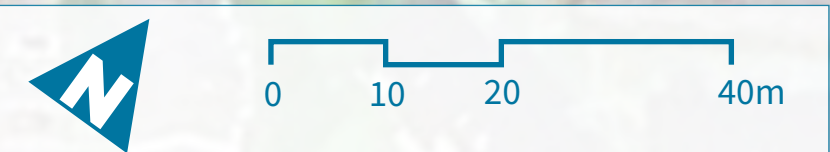
Existing Dog Park



Existing Dugout

# Moreau Park

# Proposed Site Circulation



# Moreau Park

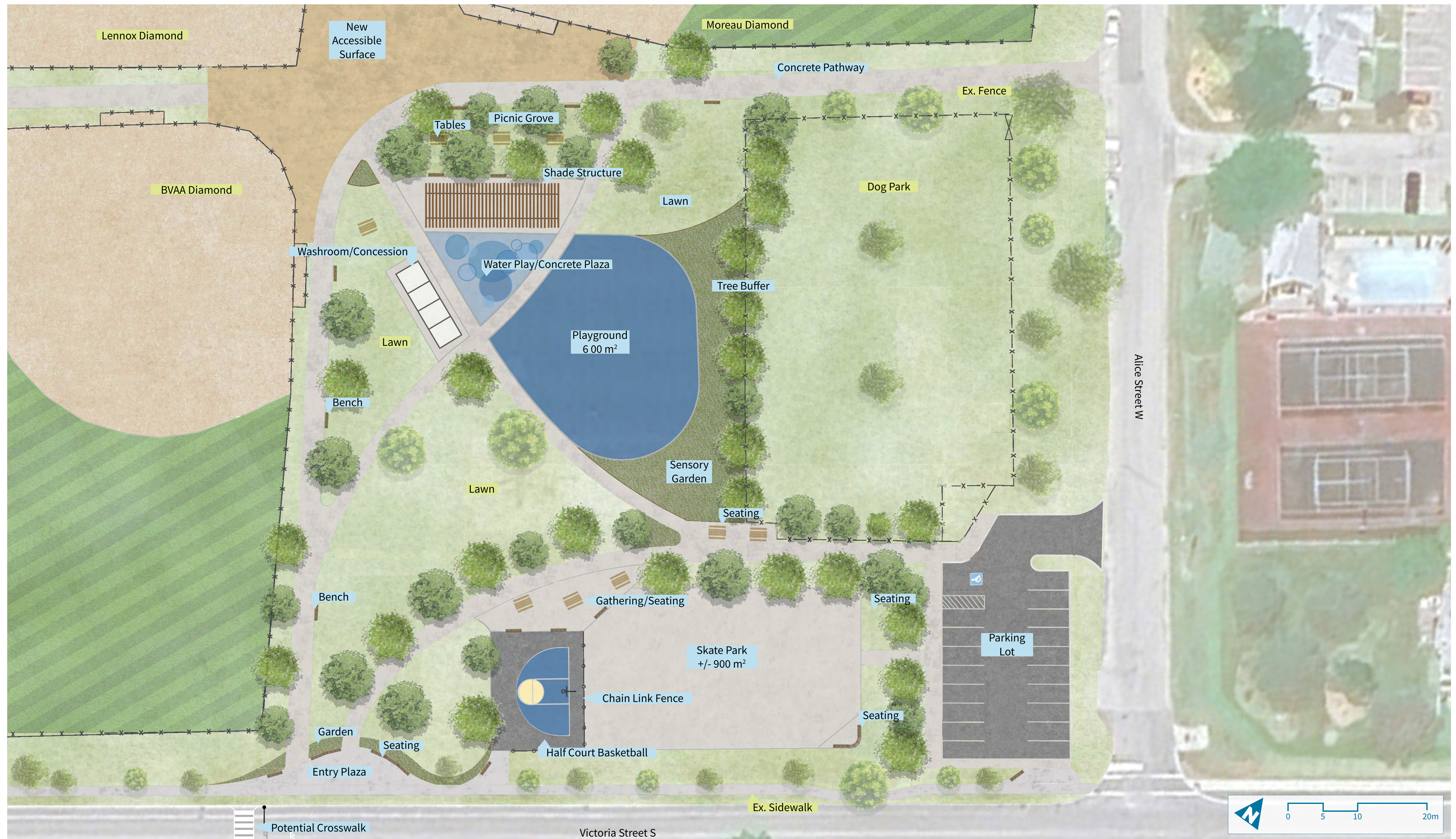
# Concept 1



The concepts shown are preliminary. They demonstrate the general program that was determined in response to a deputation by the Thornbury-Clarksburg Rotary Club in 2022, and the Town conducted survey in 2023 which gathered initial community feedback on the future of the park. Your feedback during this phase of public engagement will inform the refined concept design.

# Moreau Park

# Concept 2



The concepts shown are preliminary. They demonstrate the general program that was determined in response to a deputation by the Thornbury-Clarksburg Rotary Club in 2022, and the Town conducted survey in 2023 which gathered initial community feedback on the future of the park. Your feedback during this phase of public engagement will inform the refined concept design.

# Moreau Park

# Play Opportunities



Nature Exploration Play



Traditional Play with Rubberized Surface



Traditional Play Structure



Adventure Play



Natural Play Equipment with Sand Play



Sensory Play



Inclusive Play



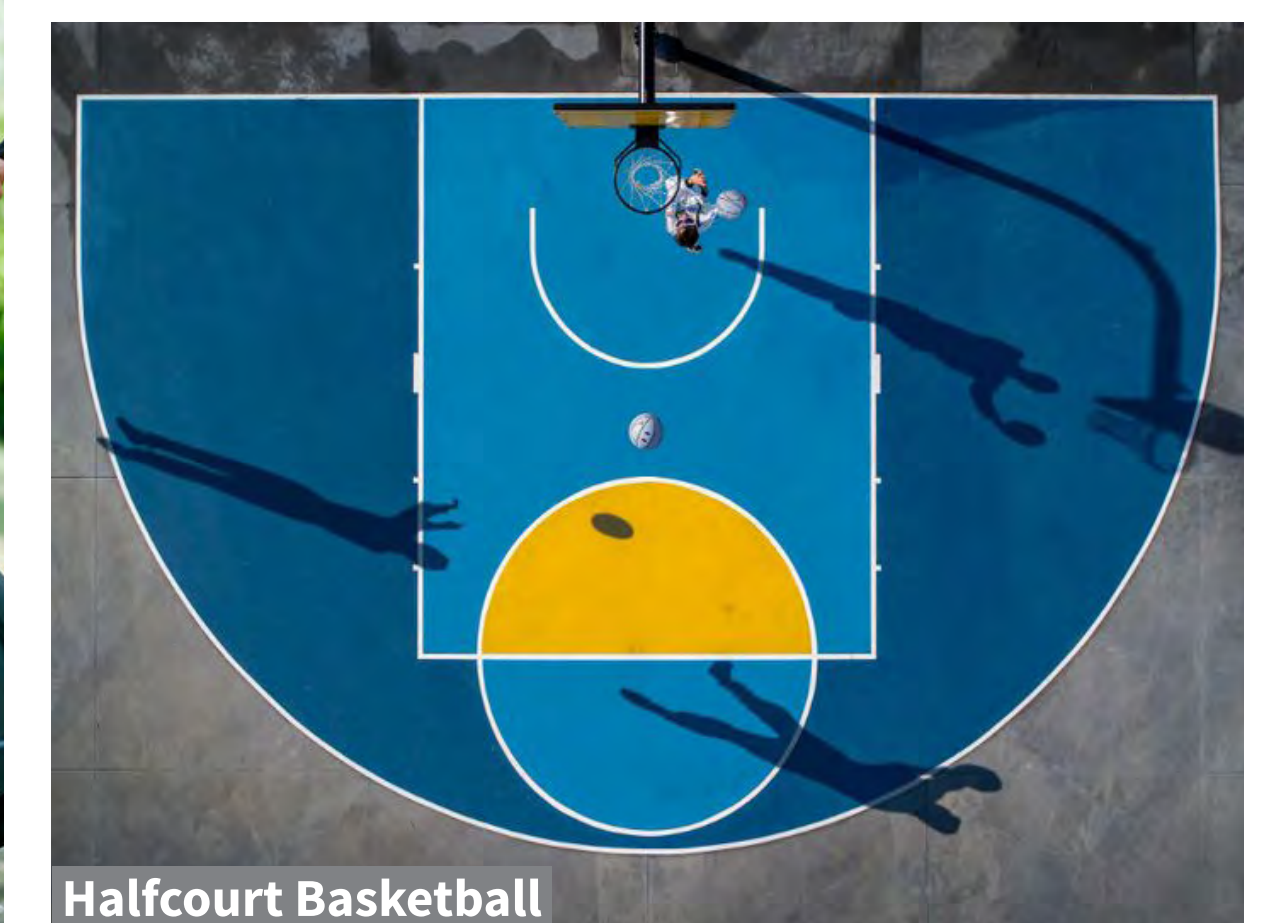
Imaginative Play



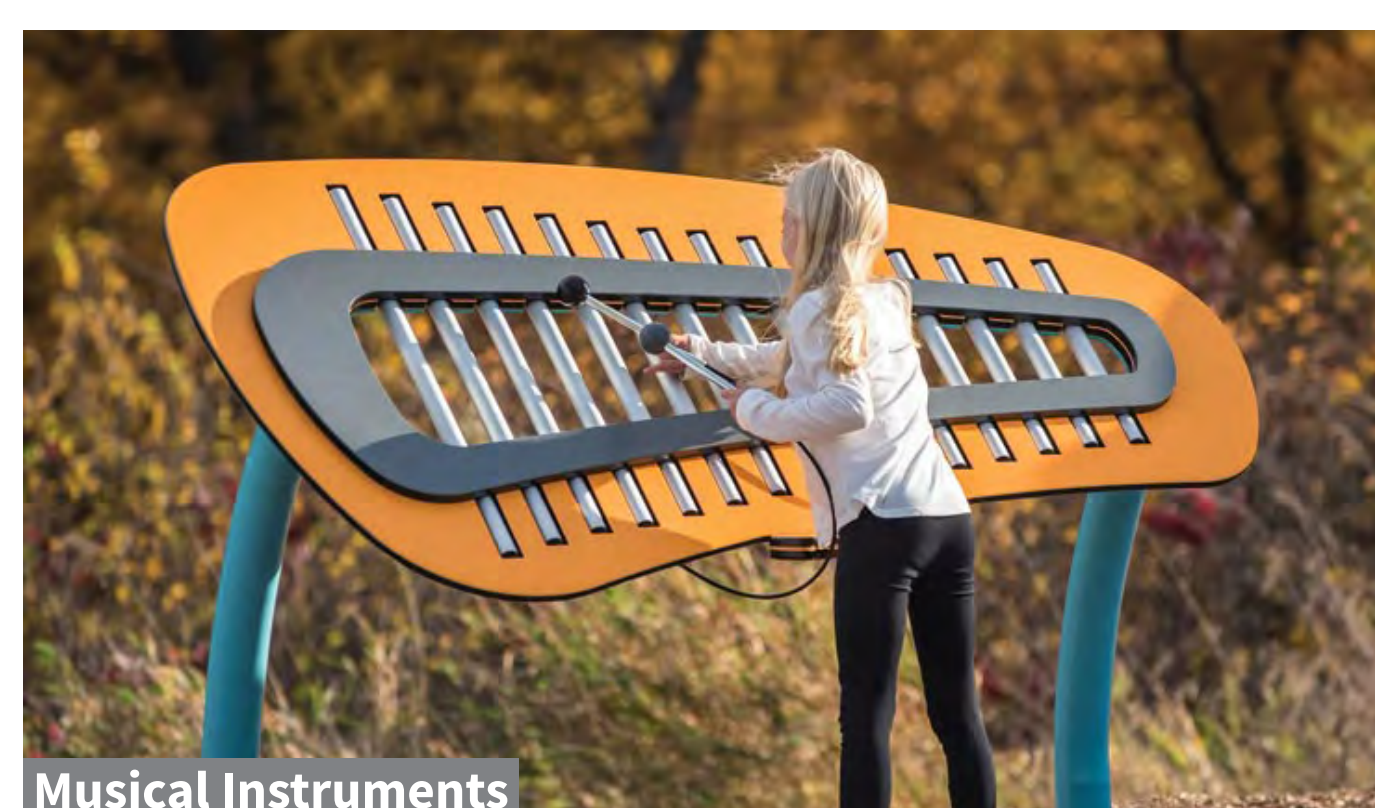
Quiet Play Options



Basket Swing



Halfcourt Basketball



Musical Instruments



Rope Climber



Sensory/Ground Activities



Water Play

# Moreau Park

# Pump Track & Skatepark Options



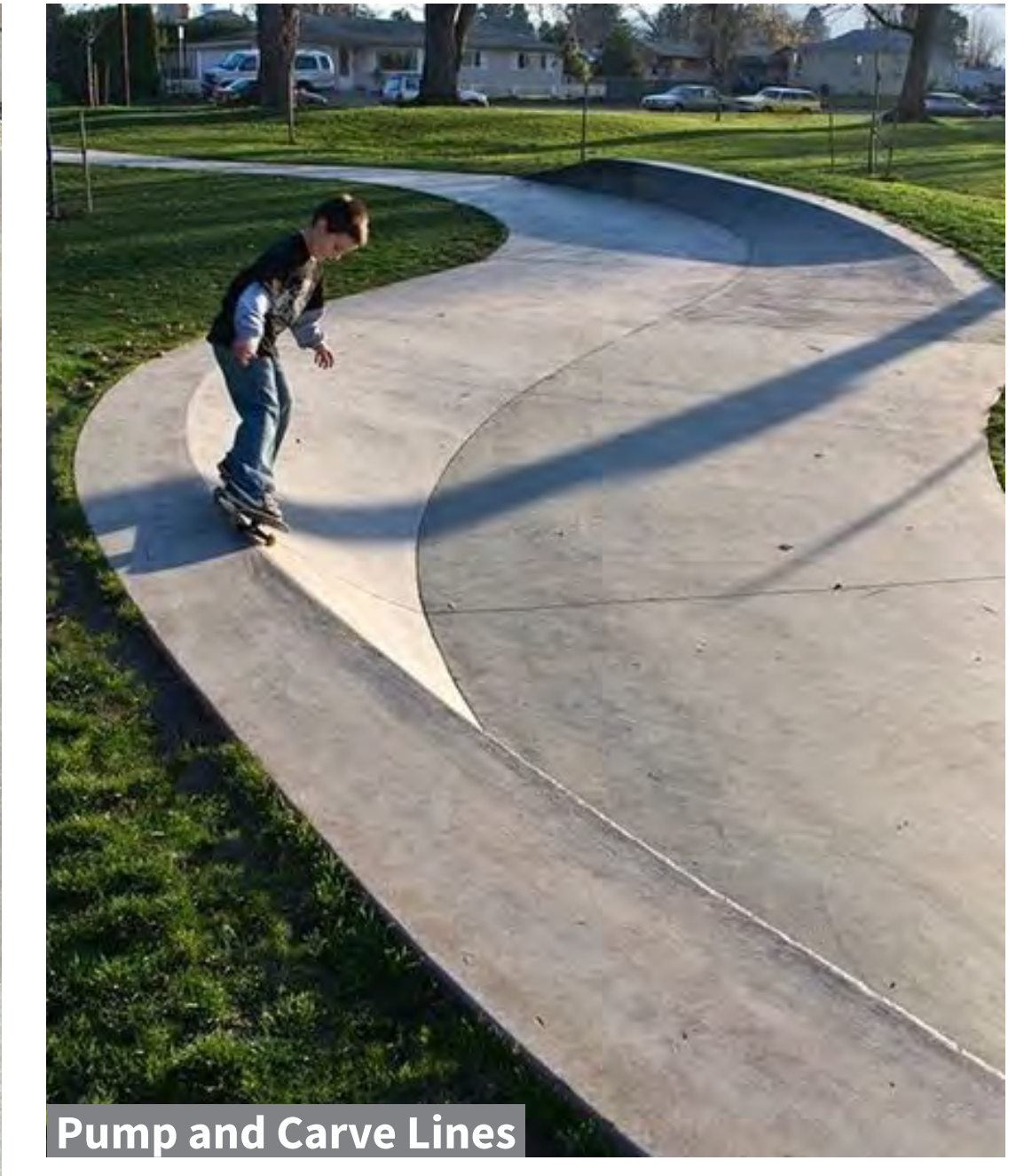
Small Pump Track



Traditional Street Course



Concrete Bowl



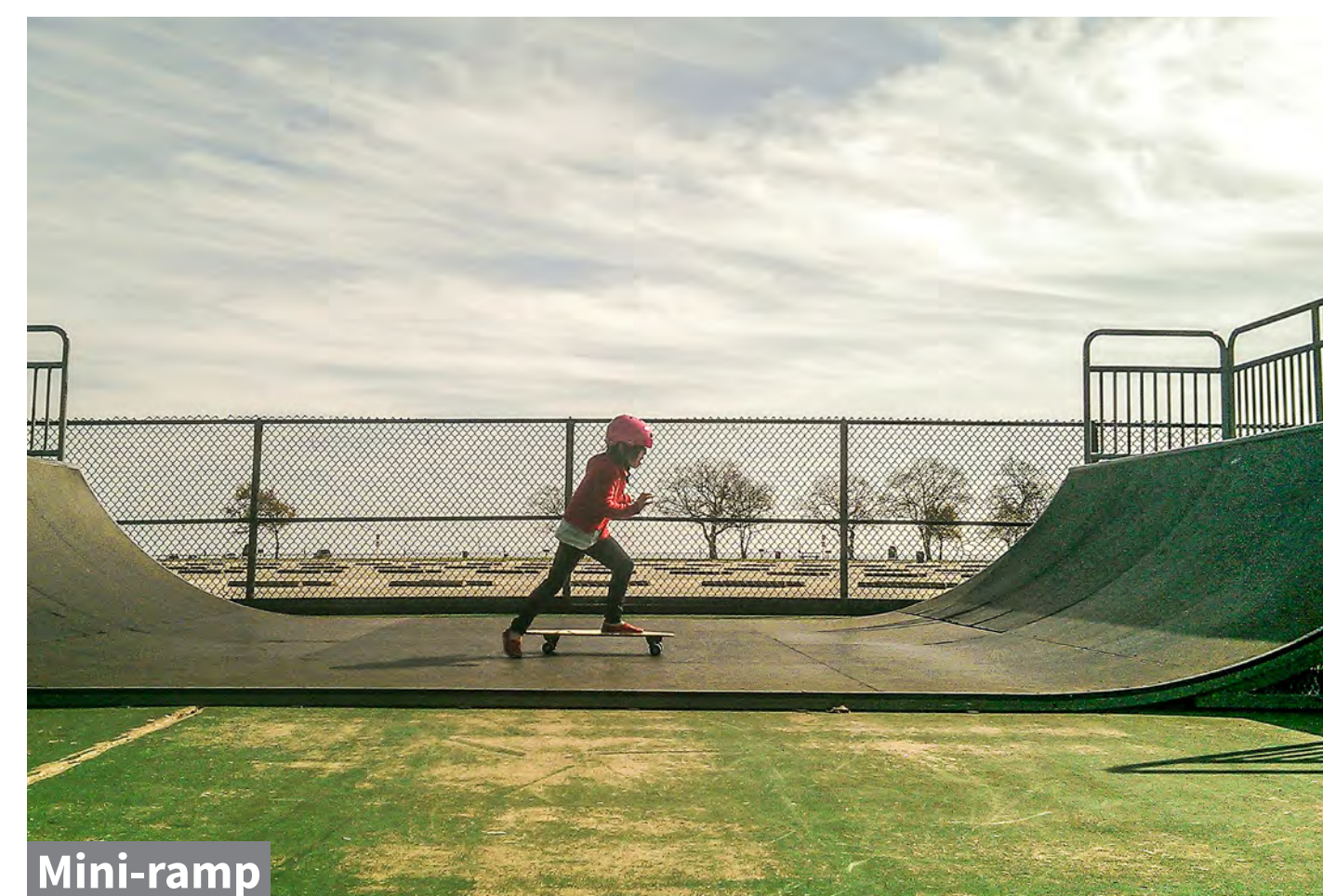
Pump and Carve Lines



Stairs with Handrail



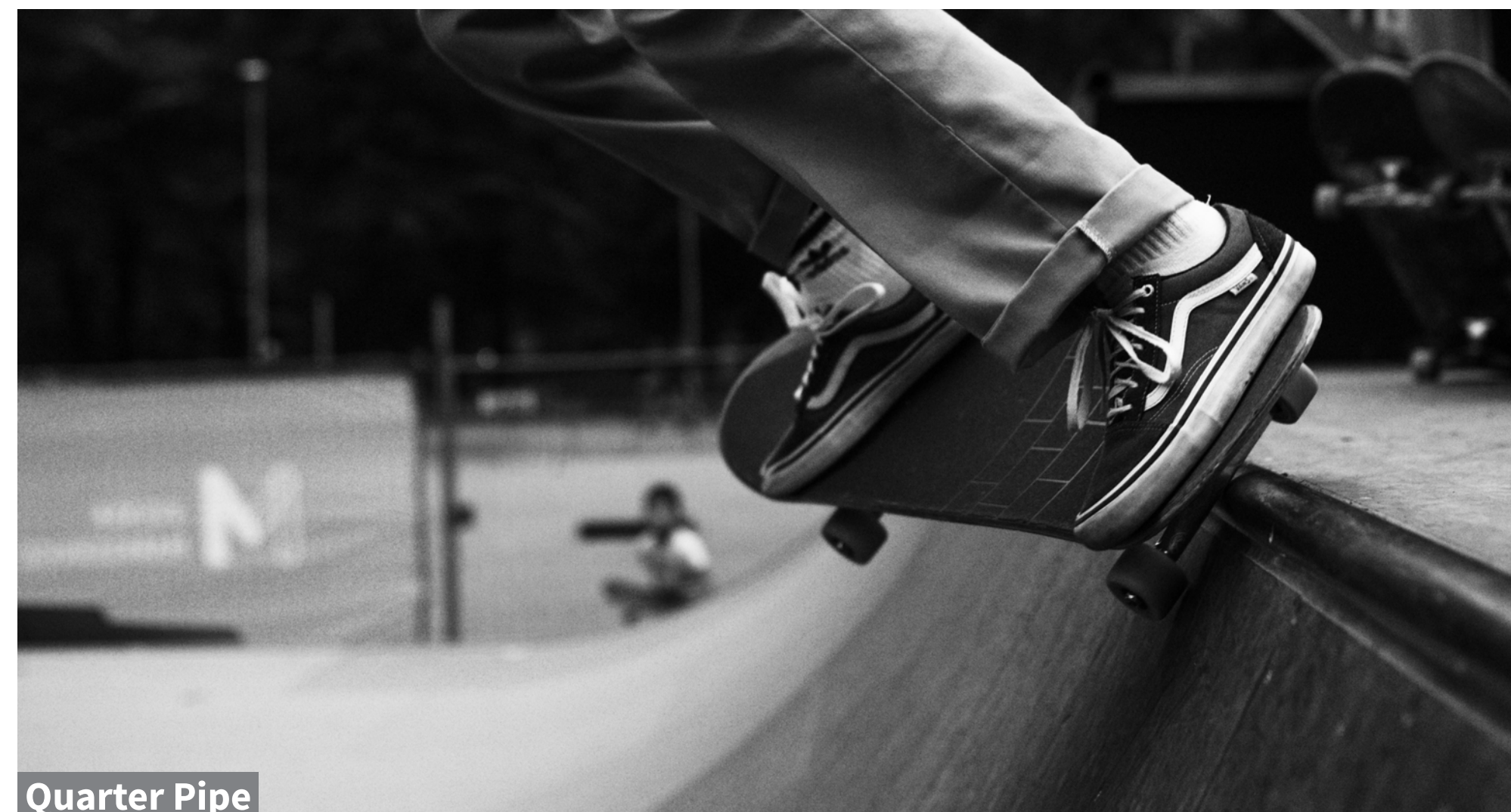
Hip



Mini-ramp



Bank



Quarter Pipe



Gap



Ledge

# Moreau Park

# Seating & Shade Options



Washroom with Concession



Shade Structure



Shade Structure



Harvest Table



Natural Stone Seating Blocks



Timber Seating



Traditional Park Bench



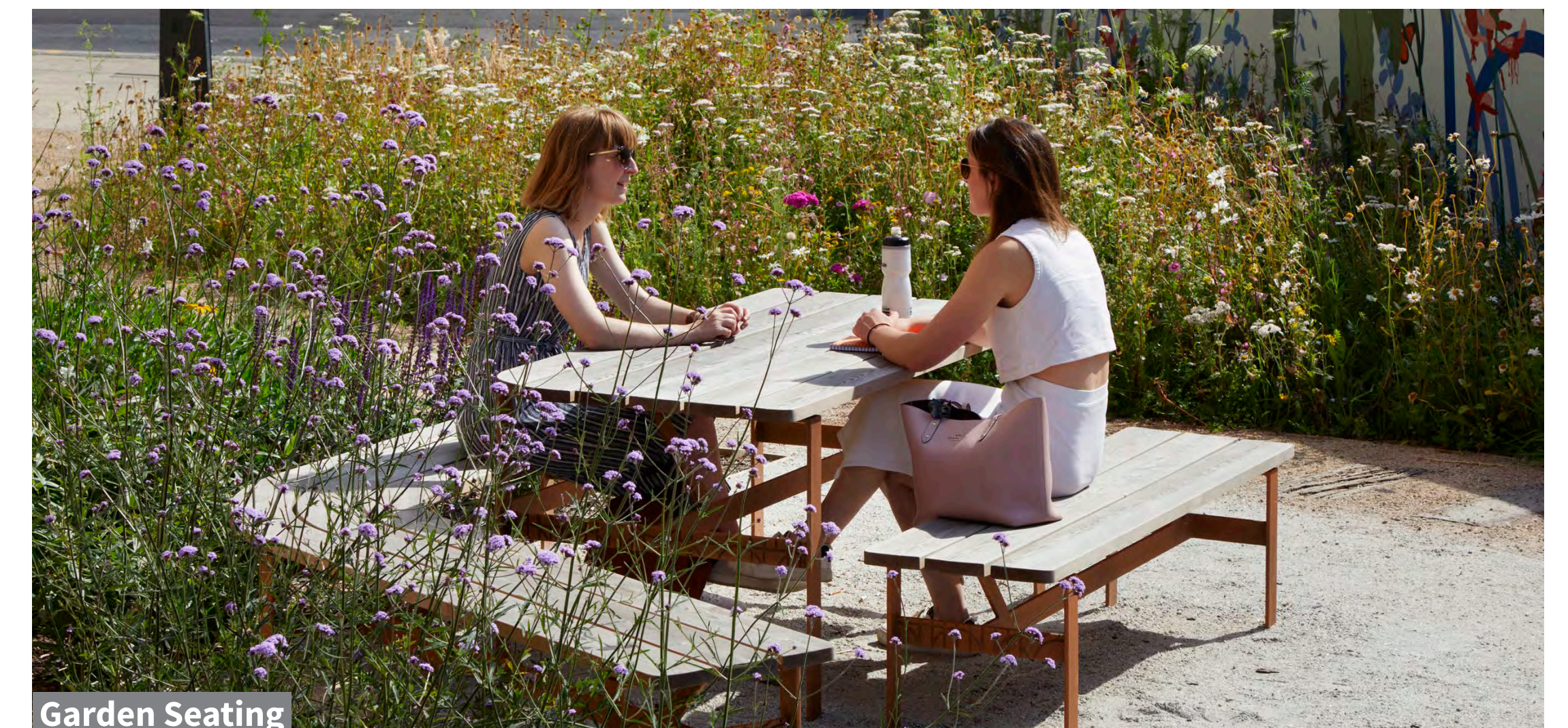
Shaded Picnic Seating



Lounge Seating



Concrete Seatwall



Garden Seating

# Moreau Park

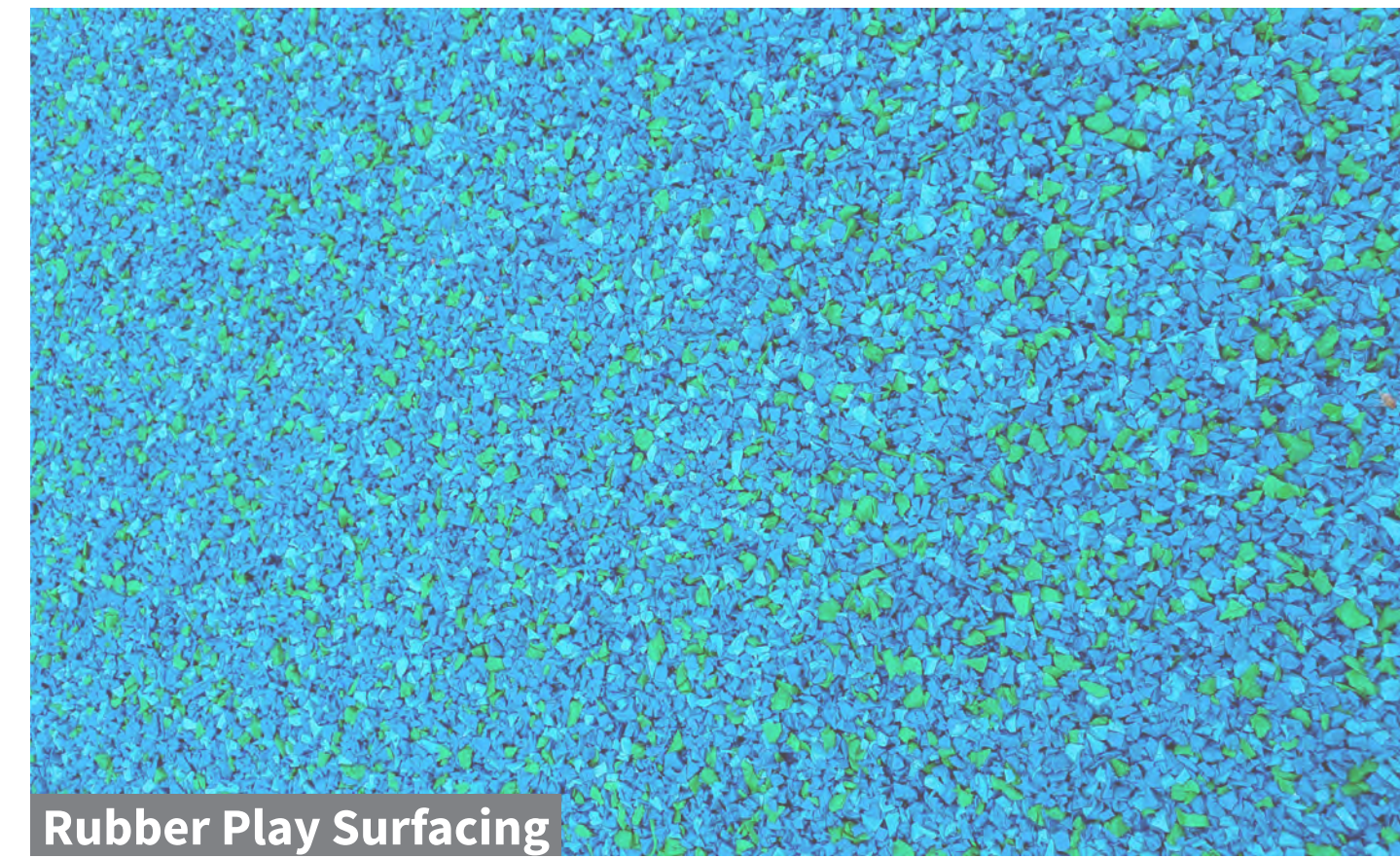
# Materials and Planting



Steel



Stone



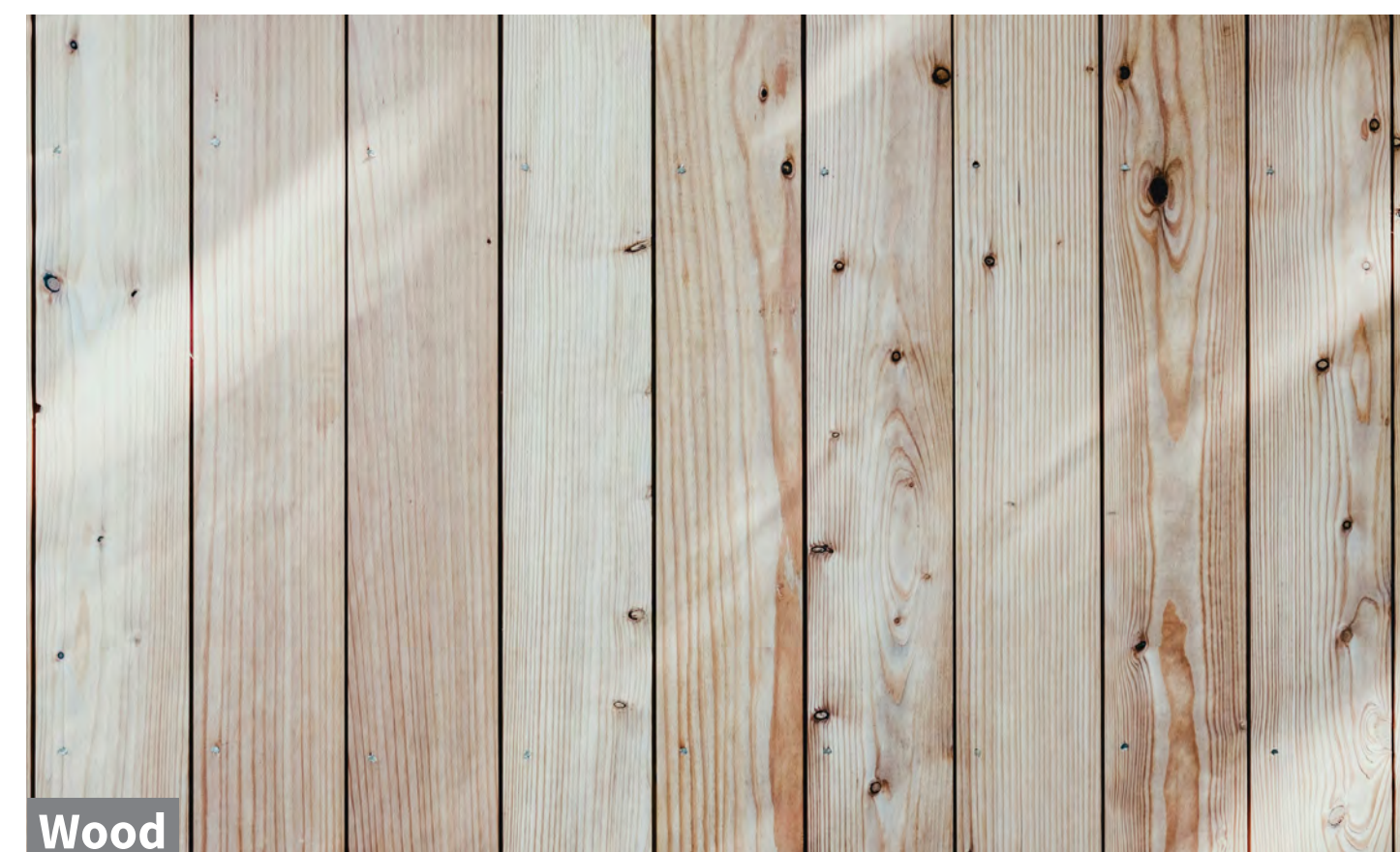
Rubber Play Surfacing



Garden Planting



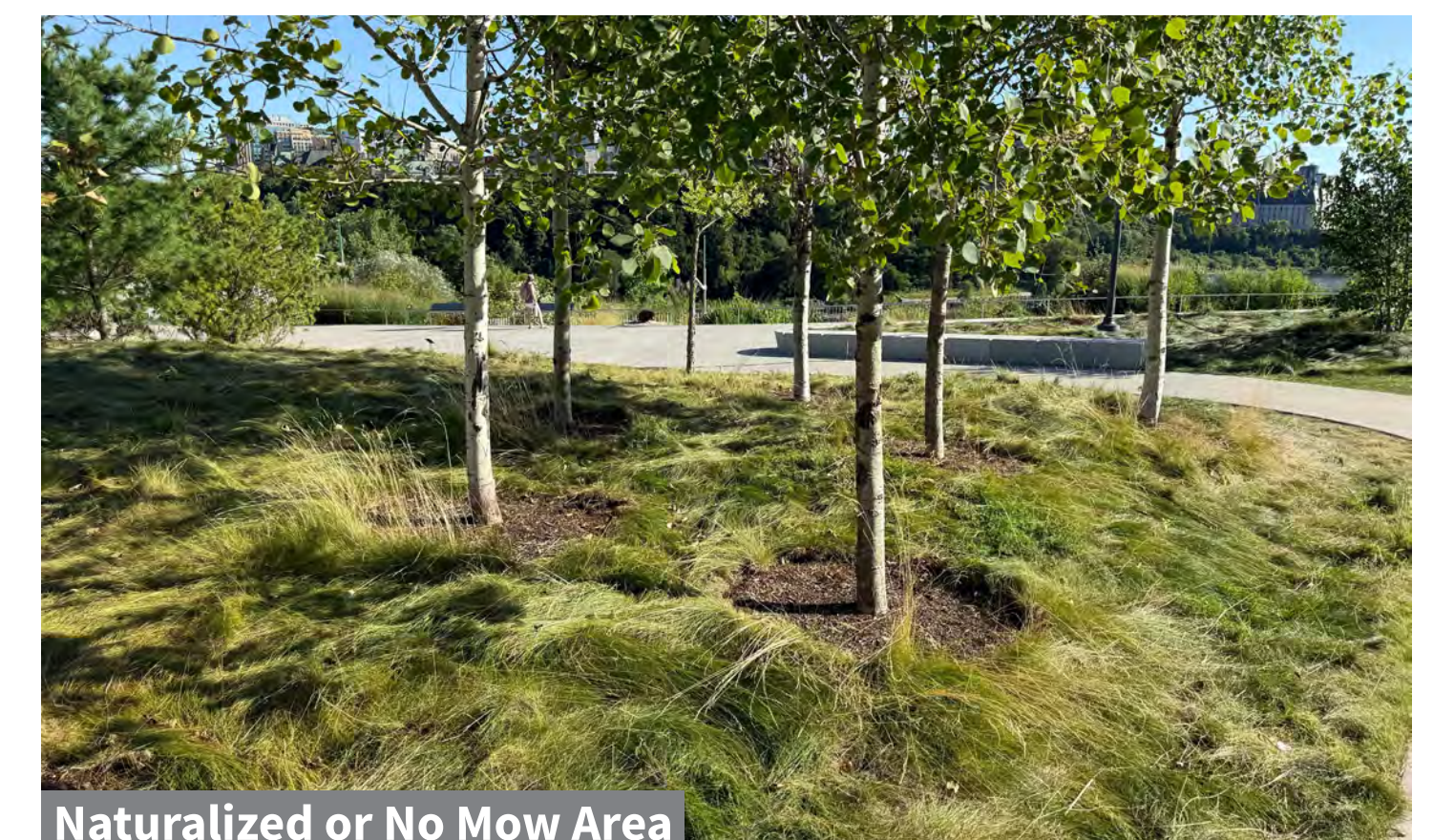
Limestone Screenings



Wood



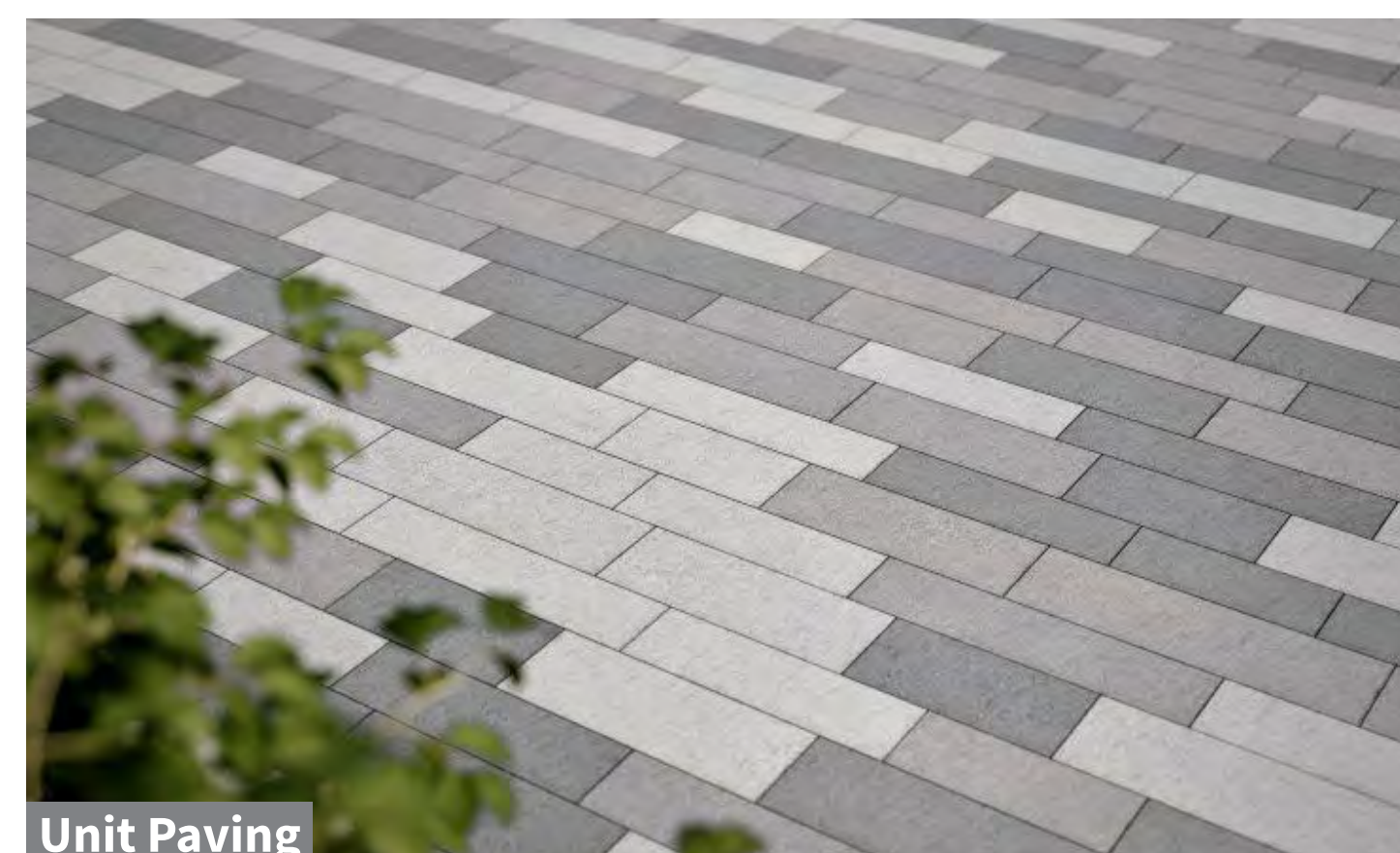
Concrete



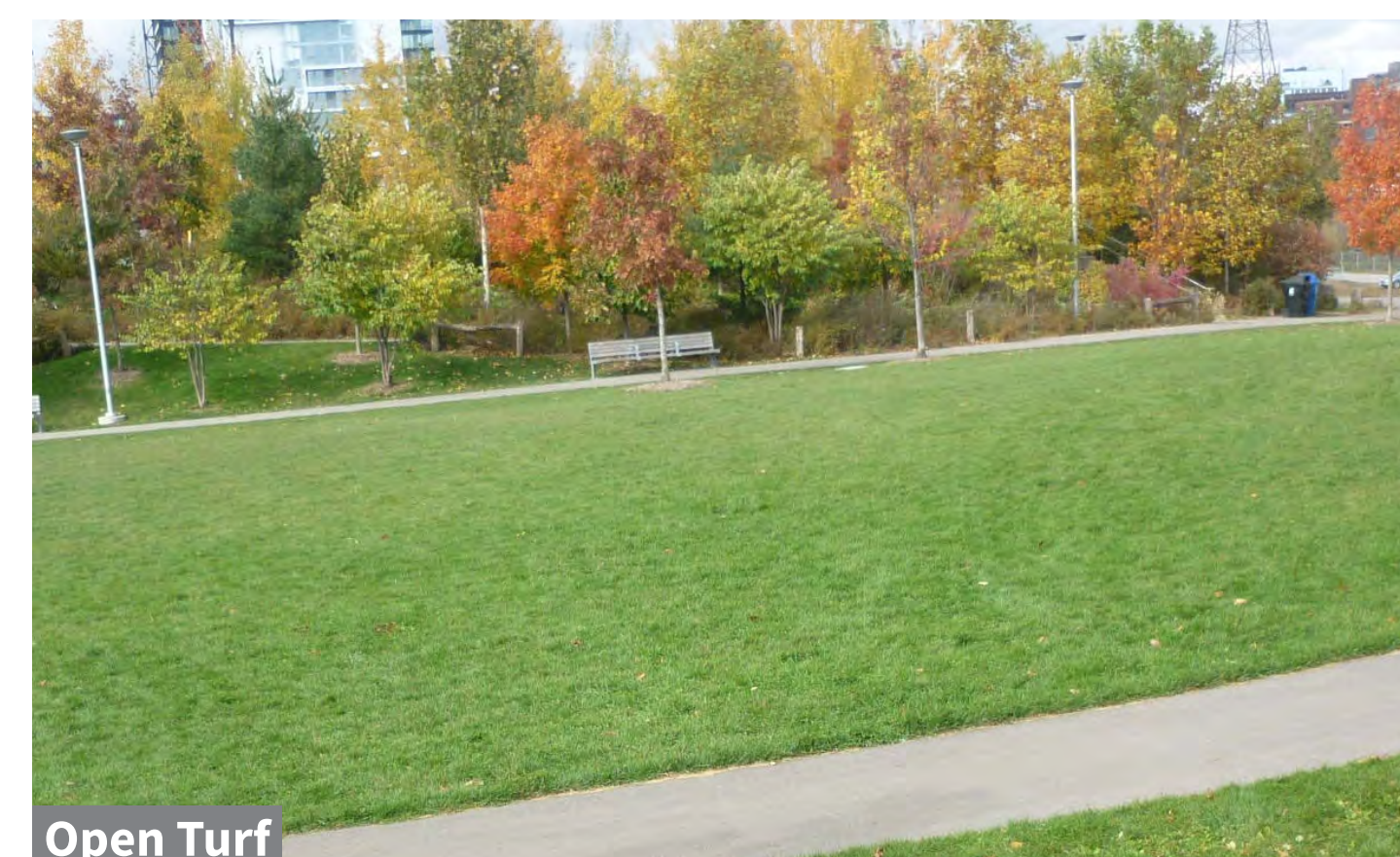
Naturalized or No Mow Area



Stainless Steel Inlay



Unit Paving



Open Turf



Tree Planting

# Moreau Park

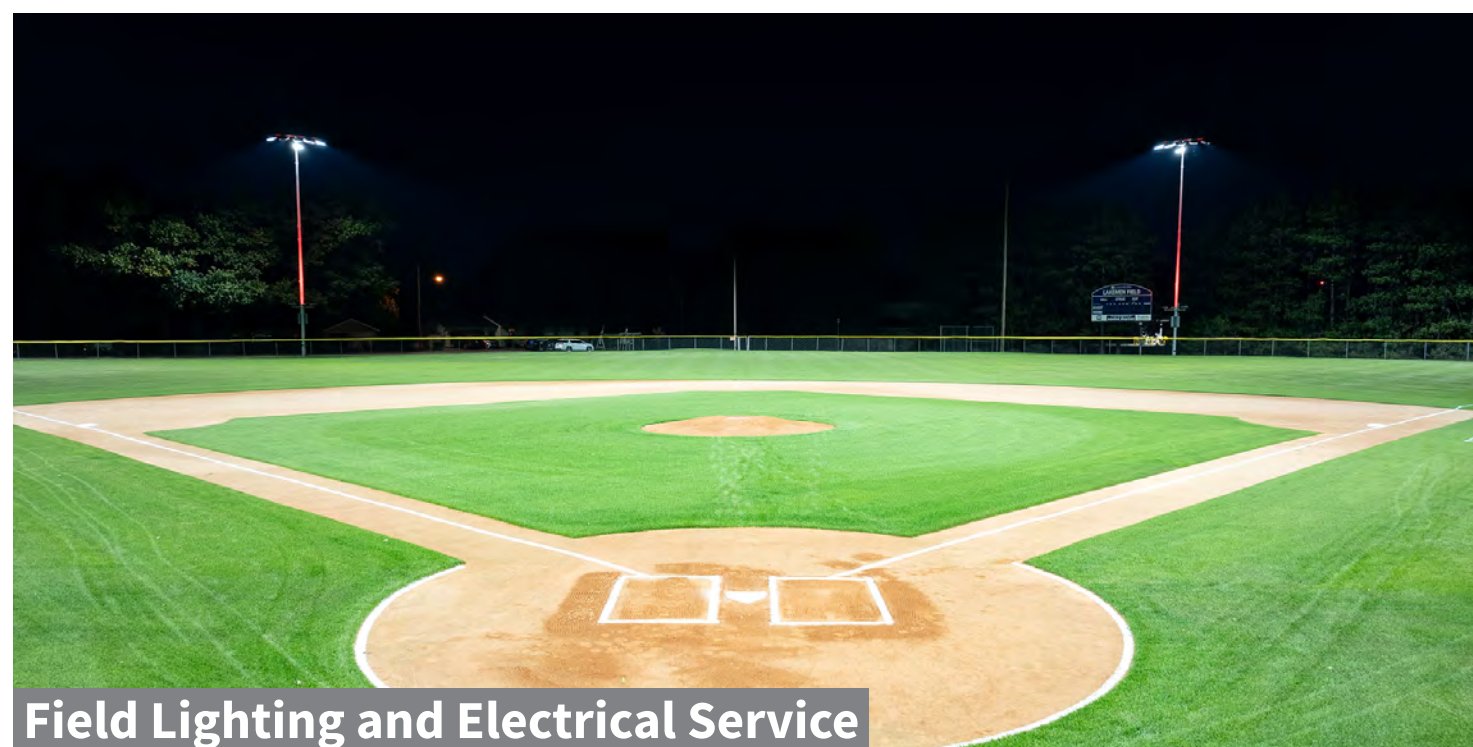
# Baseball Diamonds Revitalization

Town of the Blue Mountains has applied for funding from the Jays Care Foundation to upgrade the ball diamonds at Moreau Park through the Field of Dreams program.



**The funding, if approved, could be used to:**

- Improve accessibility throughout the ball diamond area by adding accessible pathways and central hub area
- Add field lighting to one of the existing diamonds including bringing in the appropriate electrical service required
- Replace the existing dugouts to provide players with additional shade
- Add new bleacher seating to the ball diamonds
- Replace one backstop
- Plant additional trees throughout the area to provide shade and to provide some barrier between baseball and passive areas



Field Lighting and Electrical Service



Covered Dugouts



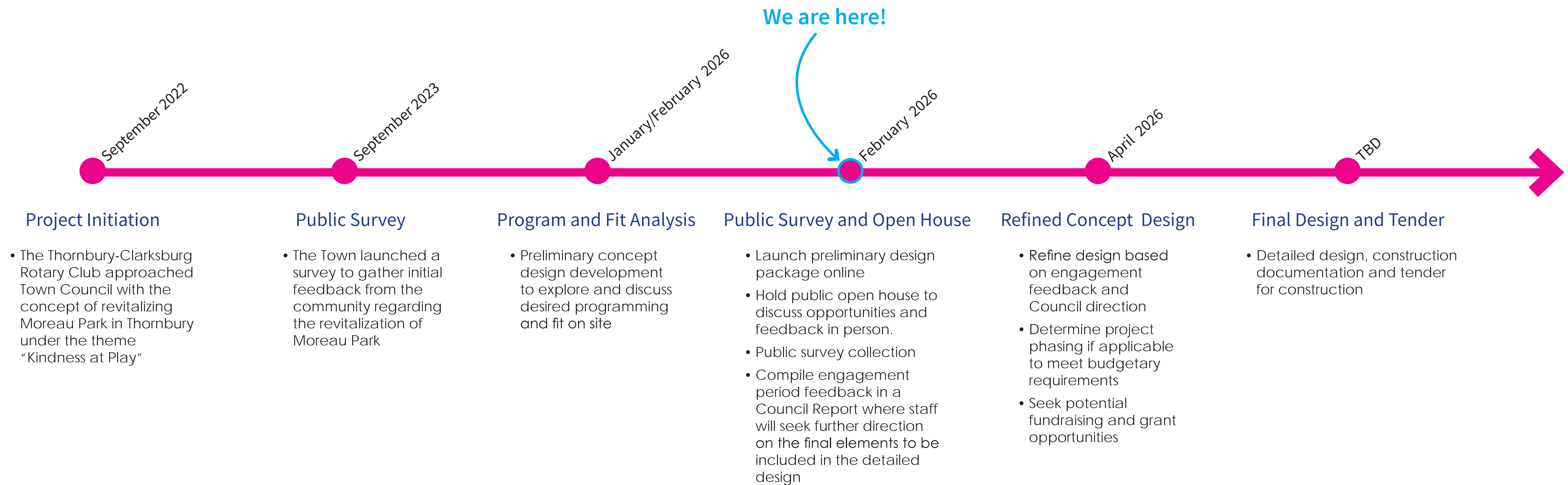
Backstop and Bleacher Replacement



Accessible Pathway Connections and Tree Planting



Wheelchair Accessible Bleacher Landings



Please note this timeline is subject to change based on engagement feedback and Council direction.