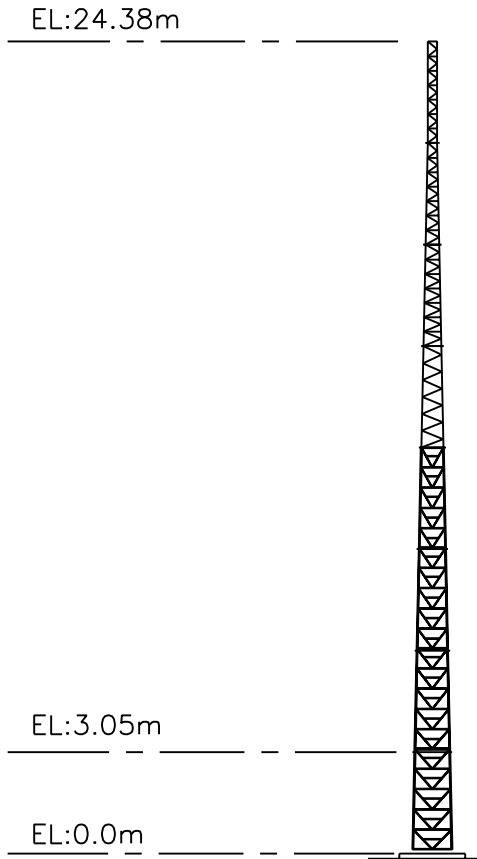


TOWER AND ACCESSORIES DESIGNED TO
 CAN/CSA-S37-24 FOR:
 WIND = 450pA (1/50yr) AND CLASS II ICE.
 ICE = 25mm

LEG SIZE	22mm BAR	22mm BAR	25mm BAR	29mm BAR	32mm BAR	32mm BAR	32mm BAR	35mm BAR	
DIAGONAL	10mm	10mm	13mm	14mm	16mm	16mm	16mm	19mm	
HORIZONTAL	19mm	19mm	19mm	19mm	19mm	19mm	19mm	19mm	
SECTION WIDTH	279 x	406 x	533 x	660 x	787 x	914 x	1041 x	1168 x	
SECTION NUMBER	WA1	WA2	WA3	WA4	MA5	MA6	MA7	MA8	



NOTES:

1. ALL MATERIAL - CSA GRADE 40.21 300W.
2. ALL MATERIAL - HOT DIPPED GALVANIZED TO CSA-G164-M90 AFTER FABRICATION.
3. ALL WELDING TO CWB APPROVED PROCEDURES CSA-W47.1-83.
4. UNLESS OTHERWISE SPECIFIED, ALL BOLTS TO BE ASTM GRADE A325 / HOT DIPPED GALVANIZED.

 <small>BRANDED FOR ONTARIO</small> <small>FAX(519)752-4160 TEL(519)752-6501</small>	DATE: JAN. 13, 2026
	SCALE: 1=240
	DRAWN BY: R. DERKS
	CHECKED BY:
	APPROVED BY:
TOWER PROFILE FOR 24.38m MA100 TOWER (80L80MA)	
DRAWING NUMBER: 26-001	SHEET 1 OF 2